



No.	DESCRIPTION	DATE

**CITY OF MONROE
PUBLIC SAFETY & MUNICIPAL
COURT COMPLEX RENOVATION
140 BLAINE ST., MONROE, GA 30655**

**SHEAR
STRUCTURAL**
300 S. BANKSTON DRIVE
ATLANTA, GEORGIA 30303
F. 404.525.9800
WWW.SHEARSTRUCTURAL.COM

shearStructuralgroup
MONROE ST. JOB
ATLANTA, GEORGIA 30313
F. 404.525.9800
WWW.SHEARSTRUCTURAL.COM

THIS DRAWING IS AN INSTRUMENT OF SERVICE AND SHALL REMAIN THE PROPERTY OF THE ARCHITECT. NO REPRODUCTIONS OR TRANSMISSIONS IN ANY FORM, ELECTRONICALLY OR MECHANICALLY, FOR ANY PURPOSE, WITHOUT THE EXPRESS WRITTEN PERMISSION OF THE ARCHITECT.

FOUNDATION DETAILS

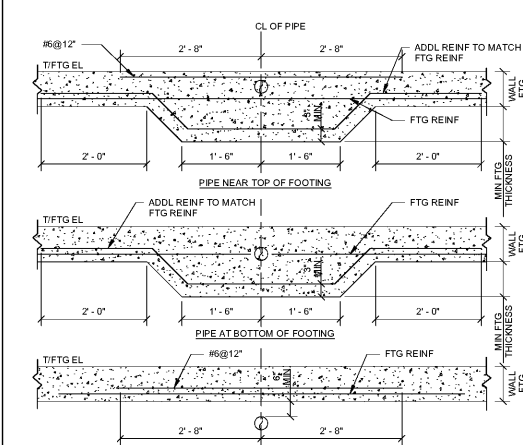
PROJECT # **19160MONRpo**
DATE: **09/04/19**
DRAWN BY: **DFM**
CHECKED BY: **HJ**

S301

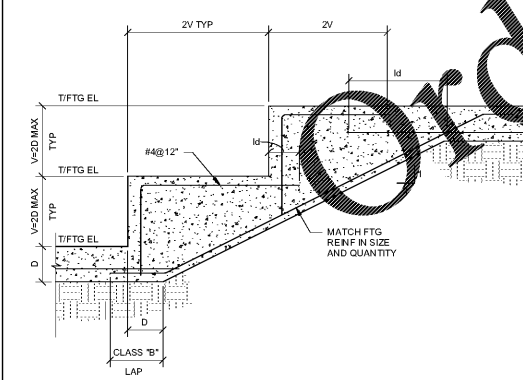
SCALE **3/4" = 1'-0"**

ISSUED FOR CONSTRUCTION

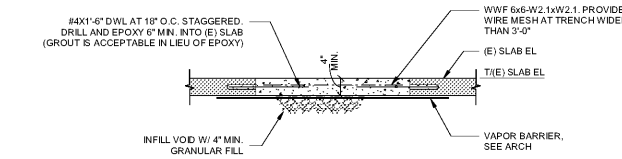
Order Plans @ www.LDILine.com



16 TYPICAL THICKENED FOOTING AT UNDERGROUND PIPING
S301 3/4" = 1'-0"

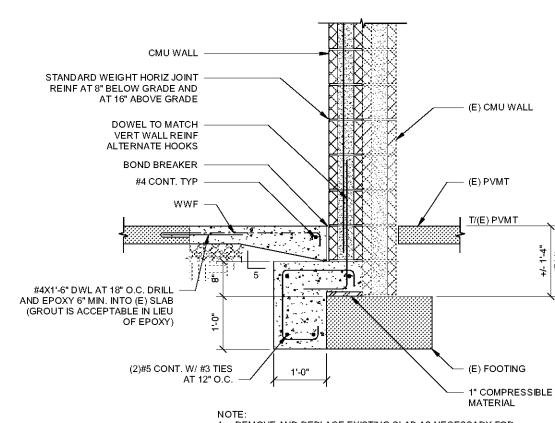


17 TYPICAL STEPPED FOOTING
S301 3/4" = 1'-0"



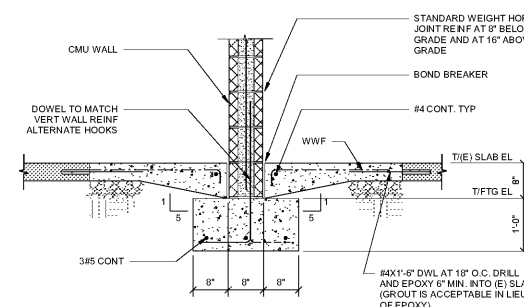
NOTE:
1. COORDINATE LOCATION OF TRENCH INFILL WITH ARCH AND PLUMBING PRIOR TO FABRICATION.
2. TOP OF NEW SLAB SHALL MATCH TOP OF EXISTING SLAB

2 TRENCH INFILL DETAIL
S301 3/4" = 1'-0"



NOTE:
1. REMOVE AND REPLACE EXISTING SLAB AS NECESSARY FOR INSTALLATION OF WALL FOOTING.

5 TYPICAL INTERIOR 8" CMU WALL FOOTING
S301 3/4" = 1'-0"



NOTE:
1. REMOVE AND REPLACE EXISTING SLAB AS NECESSARY FOR INSTALLATION OF WALL FOOTING.

1 TYPICAL INTERIOR 8" CMU WALL FOOTING
S301 3/4" = 1'-0"