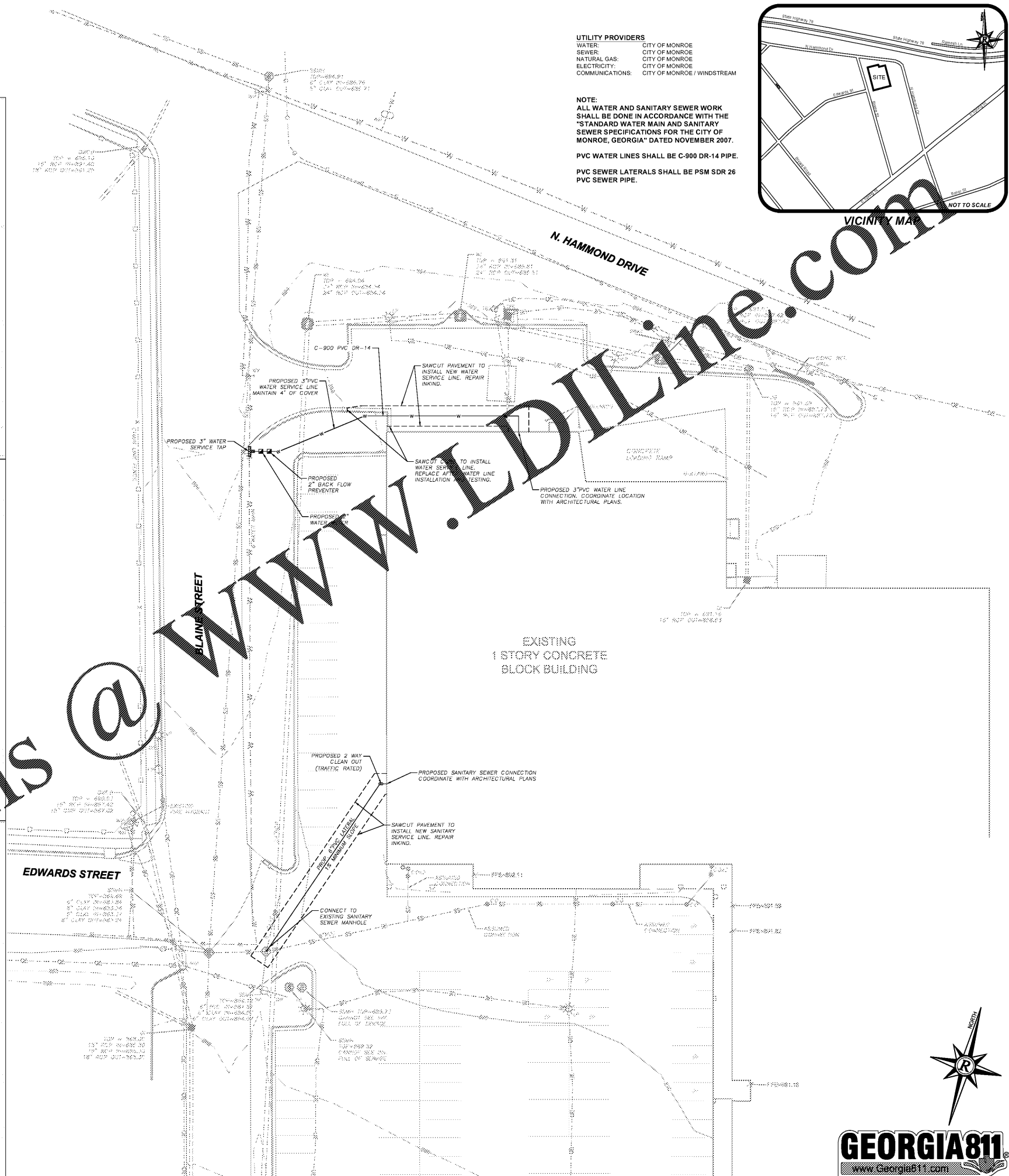
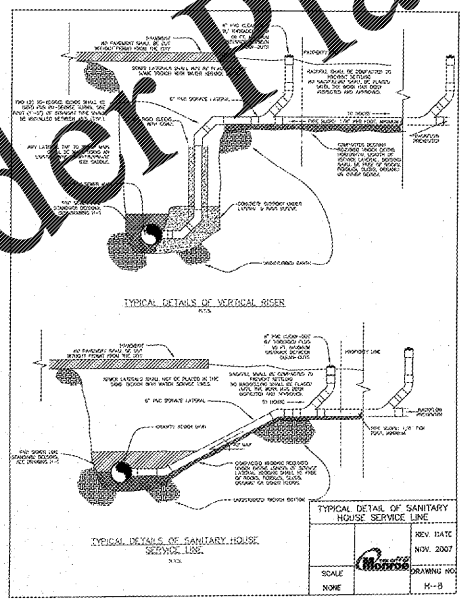
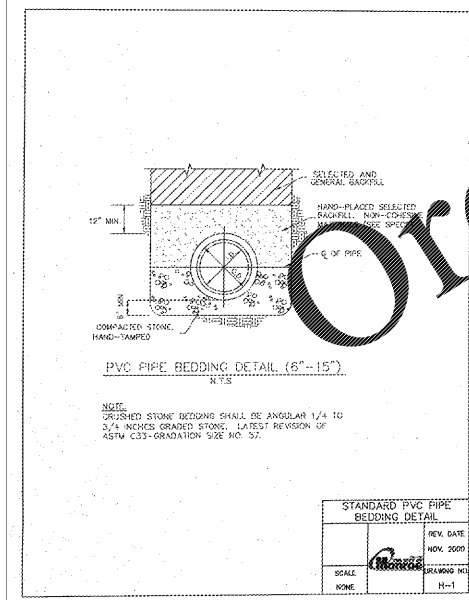
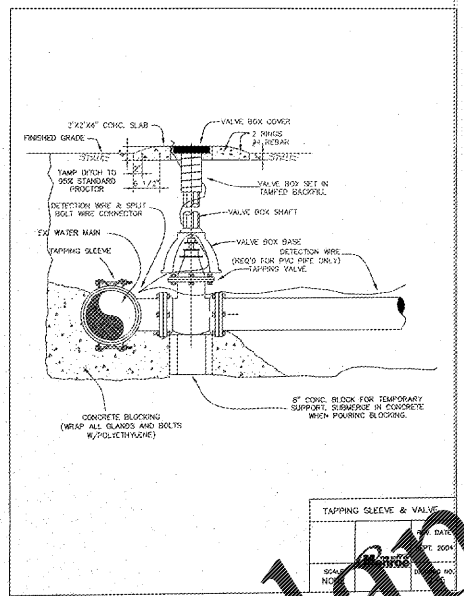
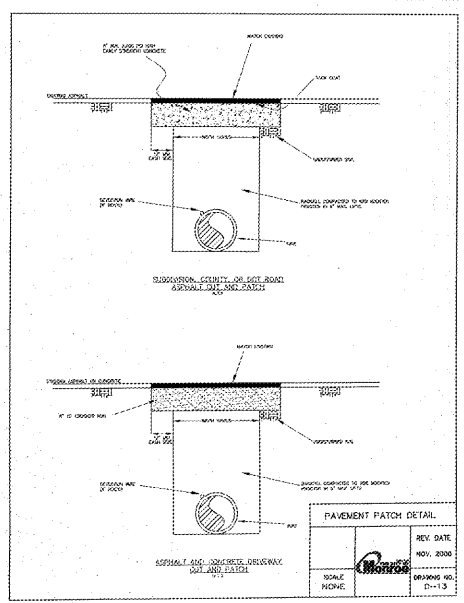


LEGEND table with various symbols and codes for engineering specifications.

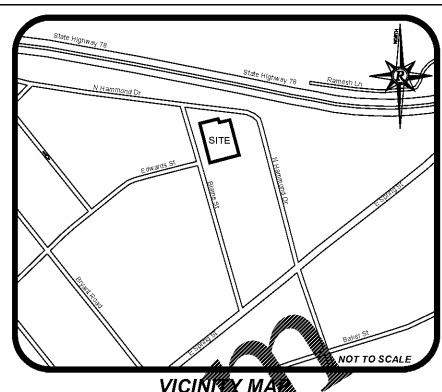
PAVEMENT REPLACEMENT SPECIFICATION: TOP COURSE: 9.5 mm SUPERPAVE; BASE COURSE: 19 mm SUPERPAVE



UTILITY PROVIDERS table listing Water, Sewer, Natural Gas, Electricity, and Communications services.

NOTE: ALL WATER AND SANITARY SEWER WORK SHALL BE DONE IN ACCORDANCE WITH THE 'STANDARD WATER MAIN AND SANITARY SEWER SPECIFICATIONS FOR THE CITY OF MONROE, GEORGIA' DATED NOVEMBER 2007.

PVC WATER LINES SHALL BE C-900 DR-14 PIPE. PVC SEWER LATERALS SHALL BE PSM SDR 26 PVC SEWER PIPE.



Order Plans @ www.LDilLine.com

CITY OF MONROE PUBLIC SAFETY & MUNICIPAL COURT COMPLEX RENOVATION 140 BLAINE ST. MONROE, GA 30655

Professional seals and stamps for the City of Monroe and the project.