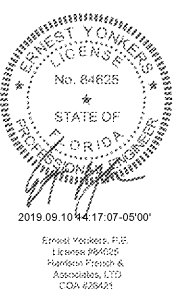


STIPULATION FOR REUSE: THIS DOCUMENT IS THE PROPERTY OF HARRISON FRENCH & ASSOCIATES, LTD. IT IS TO BE USED ONLY FOR THE PROJECT AND SITE SPECIFICALLY IDENTIFIED ON THE DRAWING. IT IS NOT TO BE REPRODUCED, COPIED, OR TRANSMITTED IN ANY FORM OR BY ANY MEANS, ELECTRONIC OR MECHANICAL, INCLUDING PHOTOCOPYING, RECORDING, OR BY ANY INFORMATION STORAGE AND RETRIEVAL SYSTEM, WITHOUT THE WRITTEN PERMISSION OF HARRISON FRENCH & ASSOCIATES, LTD. UNAUTHORIZED REUSE OR MODIFICATION OF THIS DOCUMENT IS PROHIBITED AND WILL BE CONSIDERED A VIOLATION OF THE PROFESSIONAL ETHICS OF THE ENGINEER AND ARCHITECT.

Cumberland
 SUNRISE AND 4TH STREET
 FORT LAUDERDALE, FL
 JOB NUMBER: 41-17-00410

ISSUE BLOCK	
1 90% CDs	5/10/19
2 100% SET	6/14/19
3 90% AIM4.0	8/14/19
4 100% AIM4.0	9/11/19

CHECKED BY: EDY
 DRAWN BY: BLB
 DOCUMENT DATE: 08/14/19
 PROTO:



FIRE ALARM PLAN
 SHEET: **FA100**

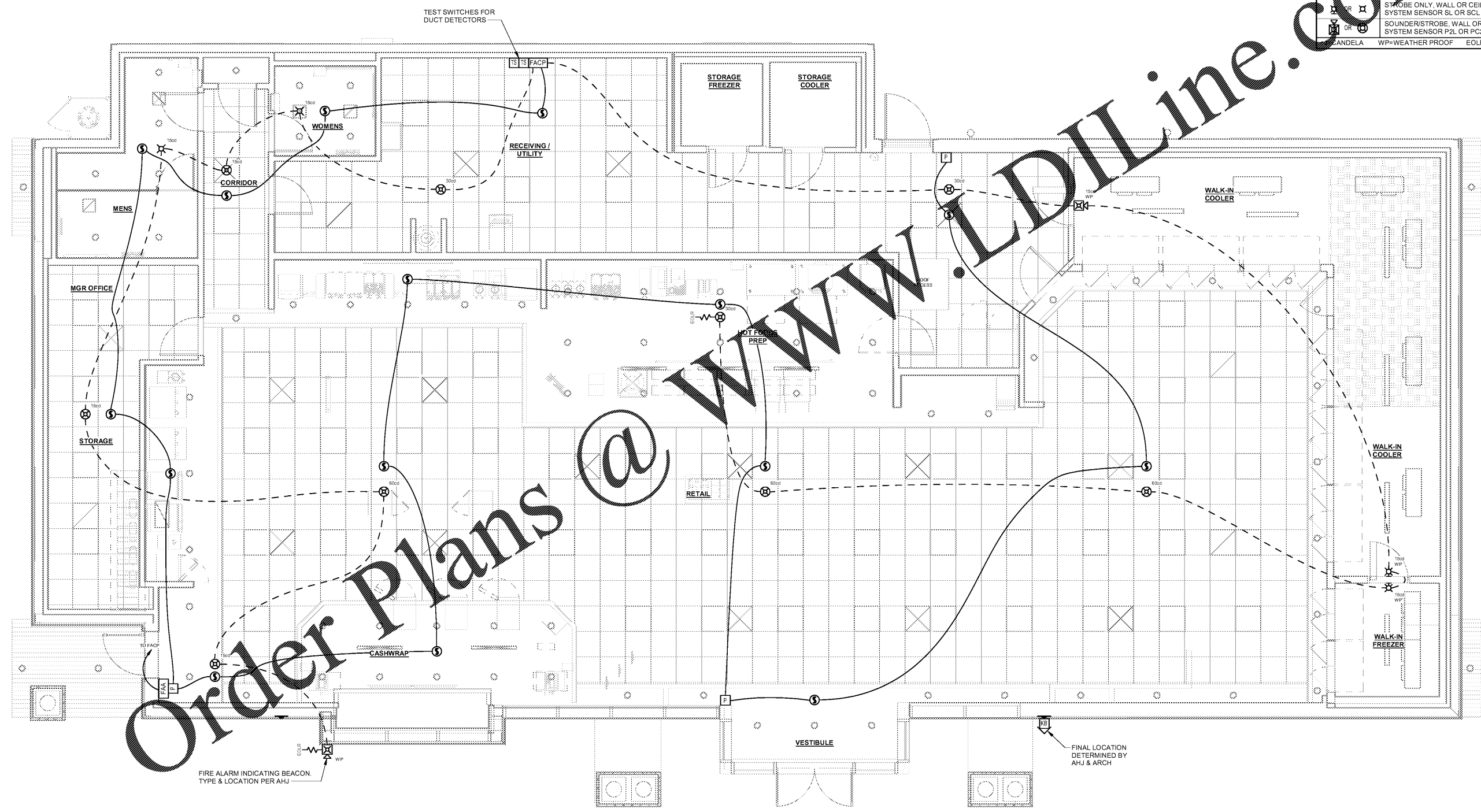
FIRE ALARM WIRE SCHEDULE	
LINE TYPE	DESCRIPTION
—	SLC CIRCUIT (DATA) TWISTED PAIR 2C/#16
- - - -	NOTIFICATION APPLIANCE CIRCUIT 2C/#14
—	REMOTE ANNUNCIATOR CIRCUIT 4C/#16

NOTES:
 • LINE TYPE SHOWN ON FLOOR PLAN TO IDENTIFY WIRE TYPE
 • ALL FIRE ALARM WIRING TO BE SOLID, POWER LIMITED CABLE
 • MINIMUM APPROVED WIRE GAUGE SHOWN

SLC=SIGNALING LINE CIRCUIT 2C=CONDUCTOR # #14=WIRE GAUGE

FIRE ALARM SYMBOL LEGEND	
SYMBOL	DESCRIPTION (SYMBOLS USED IF APPLICABLE)
[FACP]	FIRE ALARM CONTROL PANEL SILENT KNIGHT 6700 w/100pt CAPACITY
[FAA]	FIRE ALARM ANNUNCIATOR PANEL SILENT KNIGHT 6860 4x40
[P]	PULL STATION SILENT KNIGHT SK-PULL
[S]	SMOKE DETECTOR SILENT KNIGHT SK-PHOTO
[H]	HEAT DETECTOR SILENT KNIGHT SK-HEAT
[S] & [TS]	DUCT DETECTOR & TEST SWITCH W/ LED SILENT KNIGHT SK-DUCT & RTS151KEY W/ RA100Z
[S] & [SCL]	CARDINAL MONITRODE DETECTOR SILENT KNIGHT SK-FIRE-CO
[MM] OR [CM]	MONITOR MODULE SK-MONITOR/CONTROL MODULE SILENT KNIGHT SK-MONITOR OR SK-RELAY
[KNOX]	FIRE DEPARTMENT KNOX BOX
[S] OR [SCL]	STROBE ONLY, WALL OR CEILING MOUNT SYSTEM SENSOR SL OR SCL
[S] OR [SCL]	SOUNDER/STROBE, WALL OR CEILING MOUNT SYSTEM SENSOR P2L OR PC2L (EXTERIOR = P2K)
[S]	MANDELA
[WP]	WEATHER PROOF
[EOLR]	END OF LINE RESISTOR

FIRE ALARM NOTES:
 • ENTIRE FIRE ALARM SYSTEM AND DEVICES SHALL BE SILENT KNIGHT AND/OR COMPATIBLE WITH SILENT KNIGHT FACP
 • COORDINATE EXACT LOCATIONS OF FIRE ALARM DEVICES WITH ARCH/NEP AND RELOCATE AS NECESSARY. SEE FA200 FOR NOTES AND DETAILS
 • COOLERS/FREEZERS: SEAL ALL WALL/CEILING MOUNTED DEVICES TIGHT TO SURFACE WITH NEOPRENE GASKET



Order Plans @ www.LDLine.com

1 OVERALL FIRE ALARM PLAN
 1/4" = 1'-0"

EACH SUBCONTRACTOR IS RESPONSIBLE FOR HAVING A THOROUGH KNOWLEDGE OF ALL DRAWINGS AND SPECIFICATIONS IN THEIR RELATED FIELD. THE FAILURE TO ACQUAINT THEMSELVES WITH THIS KNOWLEDGE DOES NOT RELIEVE THE RESPONSIBILITY OF PERFORMING THE WORK PROPERLY. NO ADDITIONAL COMPENSATION SHALL BE ALLOWED BECAUSE OF CONDITIONS THAT OCCUR DUE TO FAILURE TO FAMILIARIZE WORKERS WITH THIS KNOWLEDGE.

9/20/19 11:41 AM
 C:\Users\erickson.brawley\Documents\2019 Draw Projects\41-17-00410\41-17-00410_00410_01.dwg - R1 Landmark_0021.dwg - PLOT - 1/4" = 1'-0" - 1/4" = 1'-0" - 1/4" = 1'-0"