

KEYNOTES

46	(2) 1" POWER CONDUIT FOR CHECK-OUT BRANCH CIRCUITS FROM CPI PANEL ASSEMBLY. E.C. TO REFER TO A002 DRAWING FOR EXACT LOCATION FOR STUB-UP DIMENSIONS.
47	1" C. FOR ISO GROUND CIRCUIT. E.C. TO REFER TO A002 DRAWINGS FOR EXACT LOCATION FOR STUB UP DIMENSIONS.
48	1" C. CONDUIT FROM CHECK OUT AREA TO MANAGER'S OFFICE FOR EXTENSION OF ISO GROUND CIRCUIT. E.C. TO REFER TO A002 DRAWING FOR EXACT LOCATION FOR STUB UP DIMENSIONS.
49	RECEPTACLE FOR LOTTERY TERMINAL SHALL BE ORANGE IN COLOR AND ONLY USED FOR LOTTERY USE. RECEPTACLE TO BE MANUFACTURED BY HUBBELL HBL4792
50	EC TO COORDINATE UNDER SLAB ROUTING IN THE FIELD TO PANEL BOARDS. REFER TO A002 DRAWINGS FOR EXACT LOCATION OF SLAB PENETRATIONS.
51	1" SCH. 40 PVC CONDUIT WITH PULL STRING IN SLAB FOR "CPI" EMERGENCY SHUT-OFF (PROVIDED BY CPI, WIRED BY EC).
52	(1) 2" CONDUIT FROM CPI LOW VOLTAGE CABINET AND (1) 2" CONDUIT FROM OFFICE, AND (1) 3" LOW VOLTAGE CONDUIT FROM LOW VOLTAGE CABINET E.C. TO REFER TO A002 DRAWINGS FOR EXACT LOCATION AND STUB-UP DIMENSIONS.
53	(1) 2" CONDUIT FOR LOW VOLTAGE TO LOW VOLTAGE CABINET.

HFA
HARRISON FRENCH & ASSOCIATES, LTD.
 479.273.7780
 1705 S. Walton Blvd, Suite 3
 Bentonville, Arkansas 72712
 www.hfa-ae.com

STIPULATION FOR REUSE
 THIS DOCUMENT IS THE PROPERTY OF HARRISON FRENCH & ASSOCIATES, LTD. IT IS TO BE USED ONLY FOR THE PROJECT AND SITE SPECIFIC TO THE PROJECT. IT IS NOT TO BE REPRODUCED, COPIED, OR TRANSMITTED IN ANY FORM OR BY ANY MEANS, ELECTRONIC OR MECHANICAL, INCLUDING PHOTOCOPYING, RECORDING, OR BY ANY INFORMATION STORAGE AND RETRIEVAL SYSTEM. PERMISSION TO REUSE THIS DOCUMENT FOR OTHER PROJECTS MUST BE OBTAINED FROM HARRISON FRENCH & ASSOCIATES, LTD.

Chumberland
 SUNRISE AND 4TH STREET
 FORT LAUDERDALE, FL
 JOB NUMBER: 41-17-00410

ISSUE BLOCK

1	90%CD's	05/10/19
2	100% SET	06/14/19
3	90% AIM 4.0	08/14/19
4	100% AIM 4.0	09/11/19

CHECKED BY: JLB
 DRAWN BY: KEM
 DOCUMENT DATE: 08/14/19
 PROTO:



Jaime A. Castaneda
 License #72199
 Professional Engineer
 State of Florida
 Date: 08/14/19

ELECTRICAL DETAILS

SHEET: **E504**

- NOTES:**
- ALL ELECTRICAL DEVICES TO BE MOUNTED IN THE SHOP BY THE MILLWORK VENDOR
 - ALL WIRING TO BE COMPLETED IN THE FIELD BY THE E.C.
 - REFER TO E110 FOR POWER PLAN
 - REFER TO E130 FOR LOW-VOLTAGE REQUIREMENTS
 - REFER TO E601 FOR ELECTRICAL SCHEDULE

THE LEGRAND WIREMOLD TRENCHDUCT SYSTEM SHALL INCLUDED THE FOLLOWING COMPONENTS:
 (2) 6"x12"x 3/4" SECTIONS WITH (12)12"x12" COVERPLATES

GC SHALL NOT PENETRATE/DRILL COVERPLATES. IN AREAS WHERE MC OR DATA CABLES NEED TO EXIT THE TRENCH, COVERPLATES SHALL BE REMOVED.

EC TO UTILIZE THE TILE TRIM ACCESSORY FOR A FLUSH FINISH.

VARIABLE FREQUENCY CONTROLLER (FURNISHED BY CFI, INSTALLED BY EC)
 (1) PER FBD MACHINE. INSTALL ABOVE CPI PANELS, TYP

FBC BUCK BOOSTER (FURNISHED BY CFI, INSTALLED BY E.C.)
 (1) PER FBD MACHINE. INSTALL ABOVE CPI PANELS, TYP

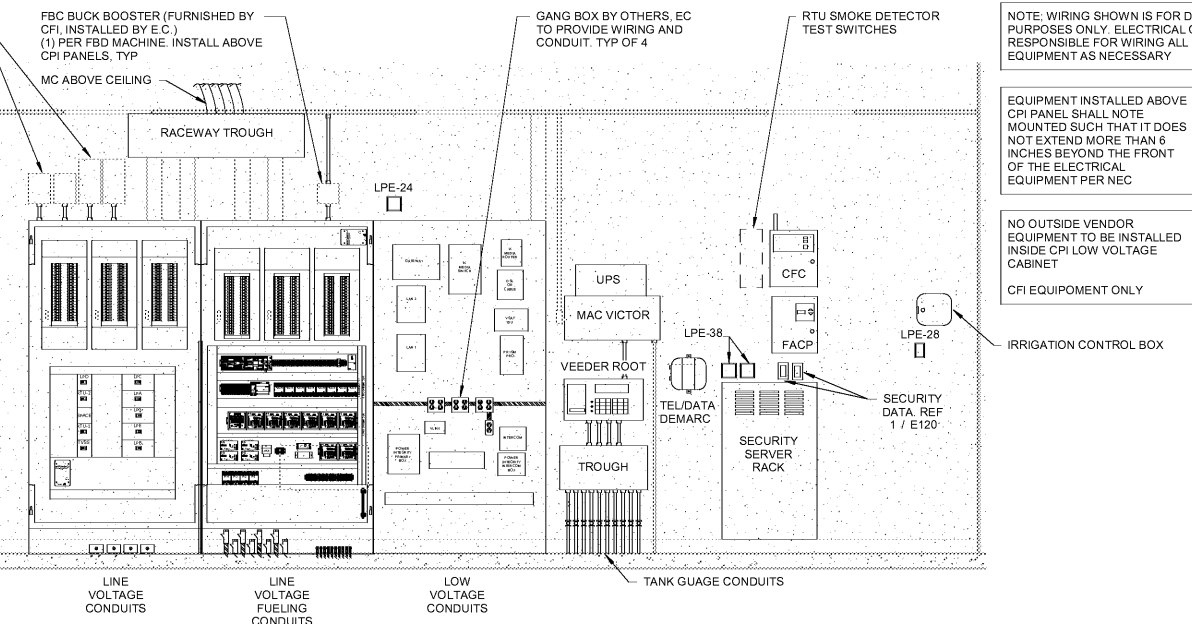
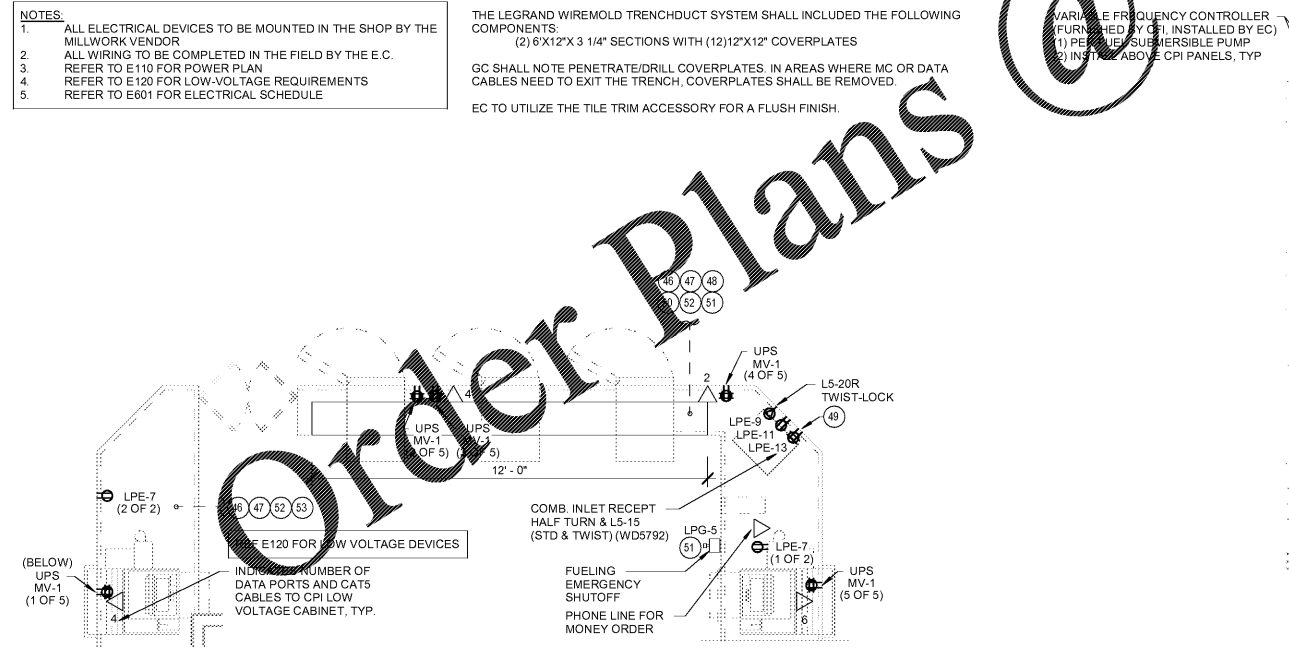
GANG BOX BY OTHERS, EC TO PROVIDE WIRING AND CONDUIT, TYP OF 4

RTU SMOKE DETECTOR TEST SWITCHES

NOTE: WIRING SHOWN IS FOR DIAGRAMMATIC PURPOSES ONLY. ELECTRICAL CONTRACTOR IS RESPONSIBLE FOR WIRING ALL DEVICES AND EQUIPMENT AS NECESSARY

EQUIPMENT INSTALLED ABOVE CPI PANEL SHALL NOTE MOUNTED SUCH THAT IT DOES NOT EXTEND MORE THAN 6 INCHES BEYOND THE FRONT OF THE ELECTRICAL EQUIPMENT PER NEC

NO OUTSIDE VENDOR EQUIPMENT TO BE INSTALLED INSIDE CPI LOW VOLTAGE CABINET
 CPI EQUIPMENT ONLY



1 ELECTRICAL - CASH WRAP DETAILS
 3/8" = 1'-0"

2 UTILITY ROOM
 1/2" = 1'-0"

9/11/2019 12:11:22 PM
 C:\Users\jfranco\Documents\2019 Rev\Projects\17-00410_AIM_4.0_FL_A\Drawings\2023_L1_ME1_V9.pdf (08/14/19)