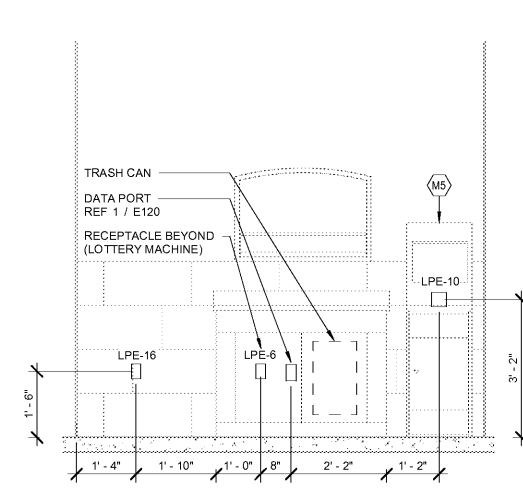
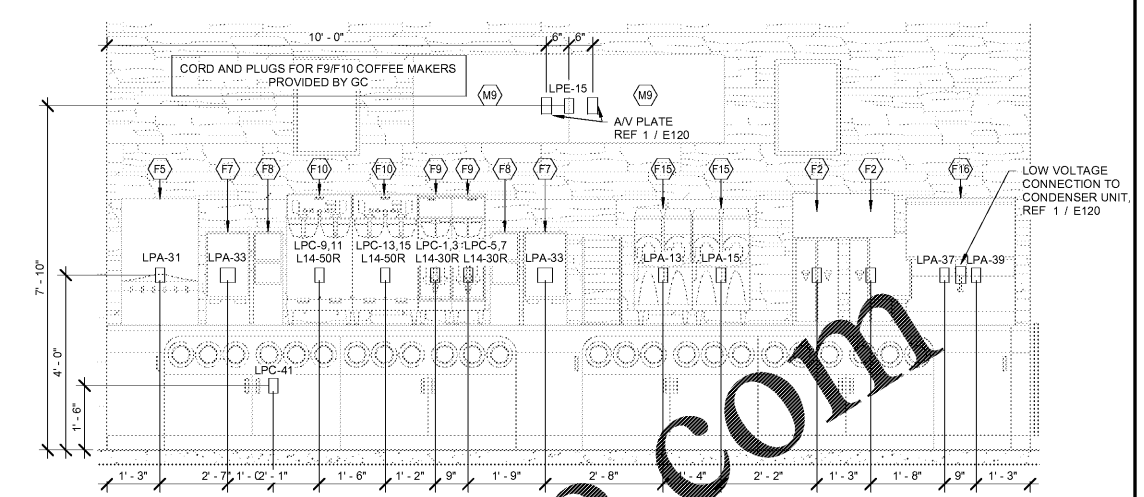


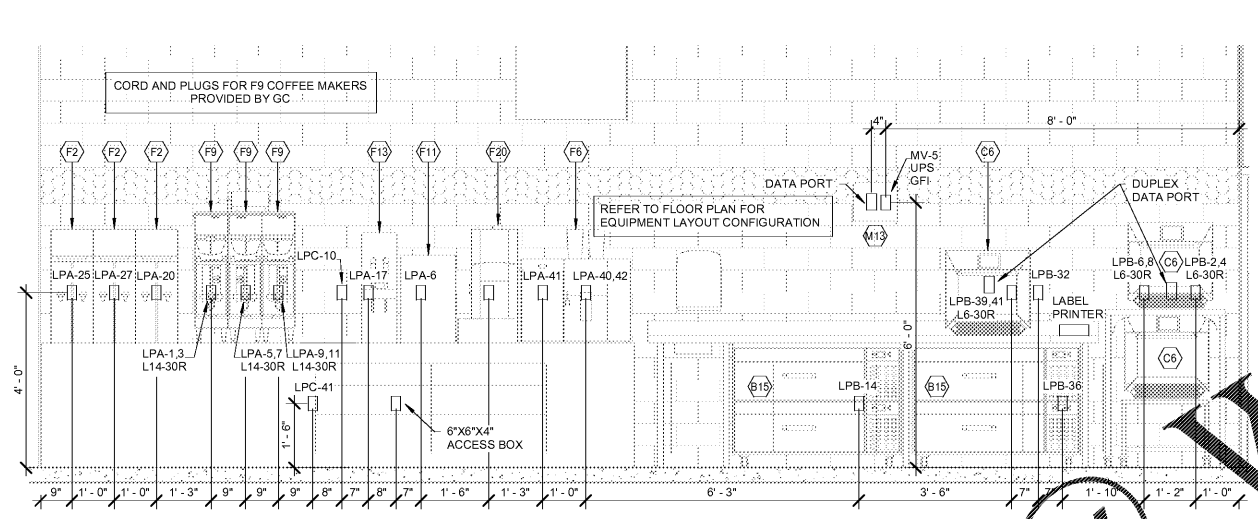
1 CHILL ZONE ELEVATION
1/2" = 1'-0"



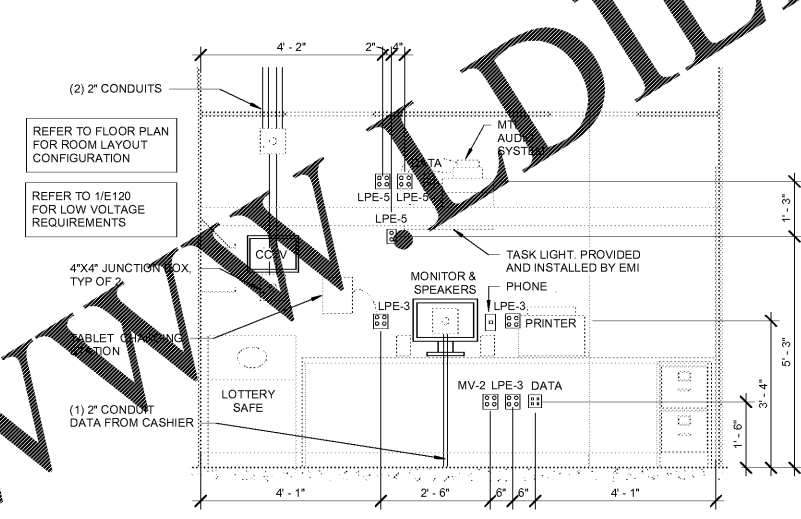
2 LOTTERY STATION ELEVATION
1/2" = 1'-0"



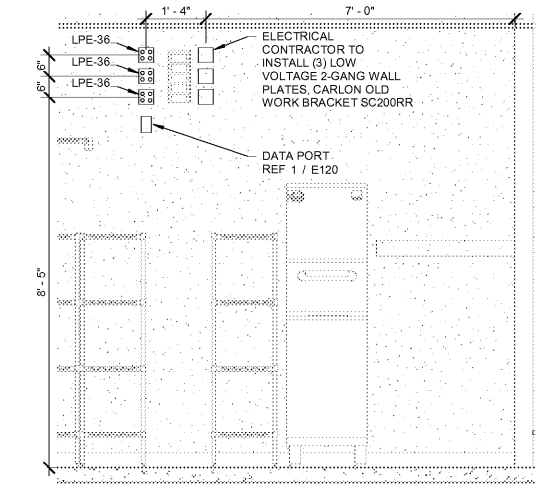
3 COFFEE BAR ELEVATION
1/2" = 1'-0"



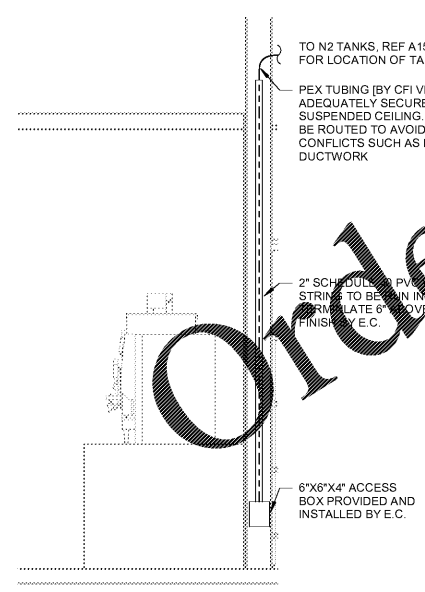
4 FOOD PREP ELEVATION
1/2" = 1'-0"



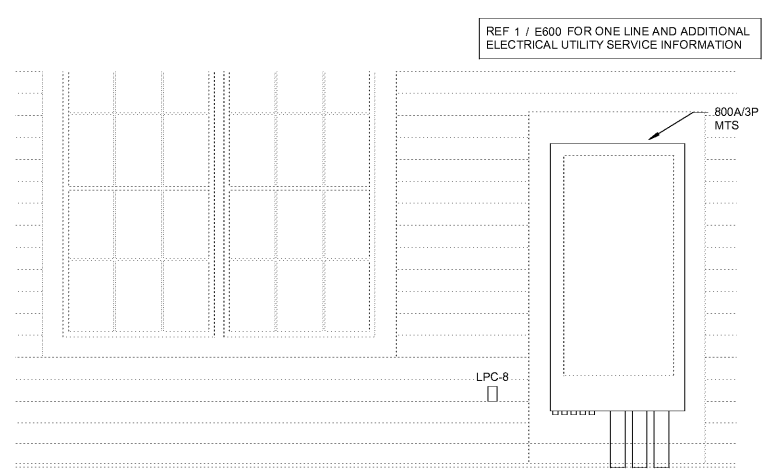
5 MANAGER'S OFFICE ELEVATION
1/2" = 1'-0"



6 DIGITAL MENU BOARD CONTROLLER ELEVATION
1/2" = 1'-0"



7 N2 TANK LINE CONDUIT ROUTING
1/2" = 1'-0"



8 ELECTRICAL SERVICE
1/2" = 1'-0"

Order Plans @ WWW.LDILine.com

9/1/2019 12:11:20 PM
 C:\Users\jandrea\Documents\2019 Raw\Projects\17-04010_A\MS\PL_01_Landmark_2023_L1_ME2_V4_P2.pdf 08/04/19

HARRISON FRENCH & ASSOCIATES, LTD.
 479.273.7780
 1705 S. Walton Blvd, Suite 3
 Bentonville, Arkansas 72712
 www.hfa.com

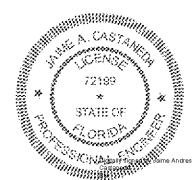
SITULATION FOR REUSE:
 USE ON AN IDENTICAL PROJECT OR FOR ITS LATER REUSE IN ANOTHER PROJECT. IT IS THE USER'S RESPONSIBILITY TO OBTAIN ALL NECESSARY PERMITS AND APPROVALS FROM THE APPROPRIATE AGENCIES AND AUTHORITIES. THE USER AGREES TO HOLD THE AUTHORITIES AND AGENCIES HARMLESS FROM AND AGAINST ANY AND ALL CLAIMS, DAMAGES, LOSSES, AND EXPENSES, INCLUDING REASONABLE ATTORNEY'S FEES AND COSTS, THAT MAY BE ASSERTED AGAINST THEM BY ANY AGENCY OR AUTHORITY.

Cumberland
 SUNRISE AND 4TH STREET
 FORT LAUDERDALE, FL
 JOB NUMBER: 41-1750410

ISSUE BLOCK

1	90% CD'S SET	05/10/19
2	100% SET	06/14/19
3	90% AIM 4.0	08/14/19
4	100% AIM 4.0	09/11/19

CHECKED BY: JLB
 DRAWN BY: KEM
 DOCUMENT DATE: 08/14/19
 PROTO:



Jaime Castaneda, P.E.
 License #72199
 Harrison French & Associates, LTD.
 1705 S. Walton Blvd.,
 Bentonville, AR 72712
 Date: 2019.09.11 11:16:40-0800

Printed copies of this document are not considered signed and sealed and the signature must be recorded on any electronic copies.

ELECTRICAL DETAILS

SHEET: **E502**