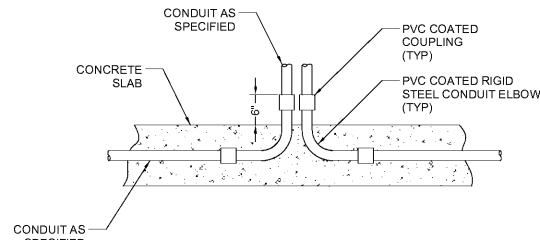
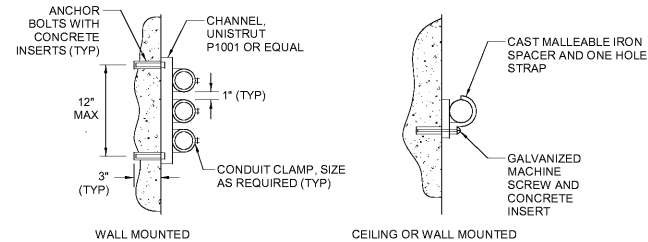


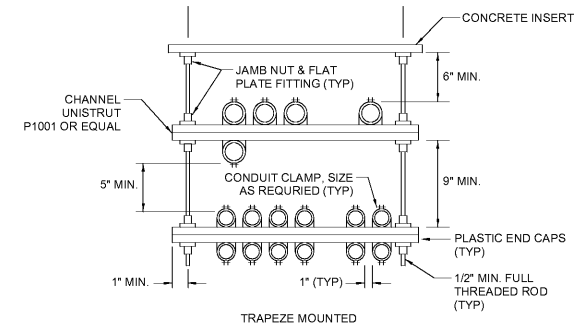
1 CONDUIT PENETRATION
1/8" = 1'-0"



2 CONDUIT STUB-UP
1/8" = 1'-0"

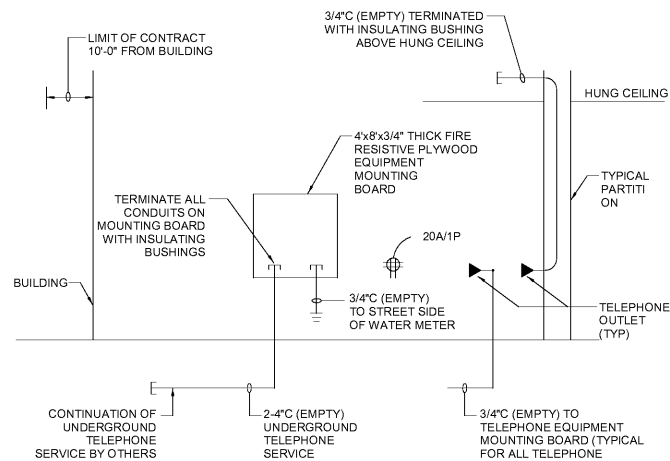


3 CONDUIT MOUNTING
1/8" = 1'-0"



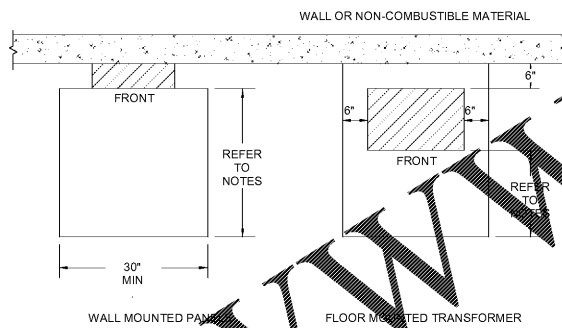
4 CONDUIT ROOF PENETRATION
1/8" = 1'-0"

NOTE:
1. CHECK TO VERIFY ALL PENETRATION METHODS WITH ROOF MANUFACTURER.



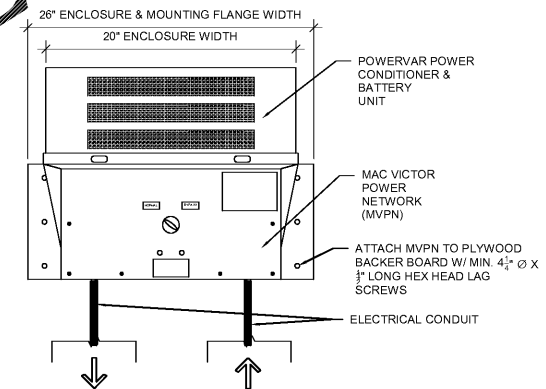
5 TELEPHONE SYSTEM RISER
1/8" = 1'-0"

- NOTE:
- ALL TELEPHONE SYSTEM WIRING SHALL BE BY THE TELEPHONE COMPANY.
 - REFER TO FLOOR PLANS FOR EXACT LOCATIONS AND QUANTITIES OF ALL TELEPHONE OUTLETS.
 - PROVIDE NYLON PULL CORD IN ALL EMPTY CONDUITS.



6 CLEARANCES FOR ELECTRIC EQUIPMENT
1/8" = 1'-0"

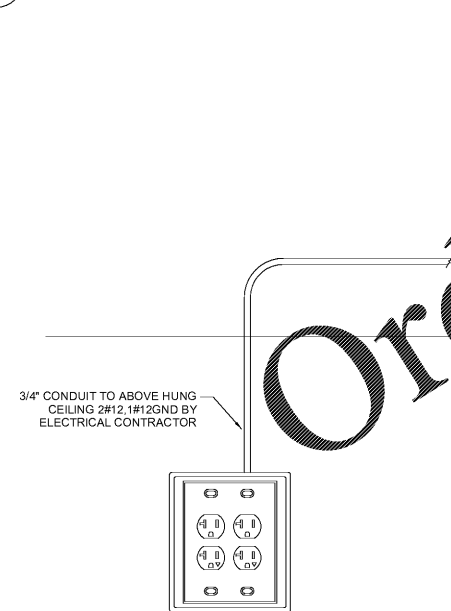
NOTE:
* MINIMUM WORKING CLEARANCE (IN THE DIRECTIONS OF ACCESS TO LIVE PARTS) AS REQUIRED BY NEC 110.16(A), CONDITION 2:
- 3' FOR 0-150 VOLT TO GROUND ELECTRIC EQUIPMENT.
- 3' FOR 150-500 VOLT TO GROUND ELECTRIC EQUIPMENT.
THE MINIMUM HEADROOM OF WORKING SPACE SHALL BE 6'-1/2".
PANELS INCLUDE: POWER PANELS, CONTACTORS, CONTROL CABINETS, DISCONNECT SWITCHES, MOTOR PARTS, TIME CLOCK AND SIMILAR ELECTRIC EQUIPMENT.



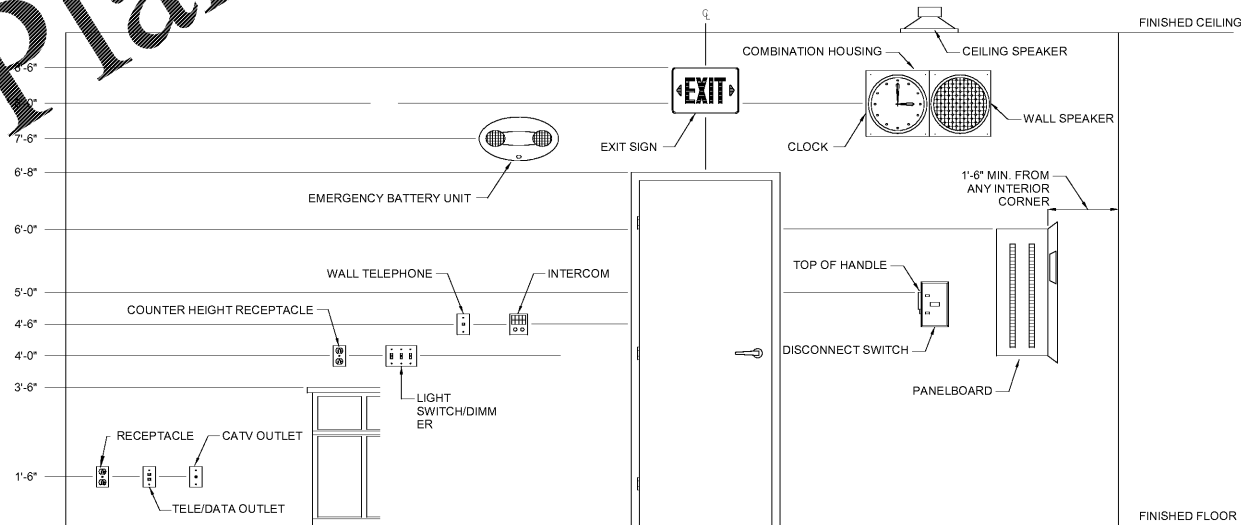
7 MAC VICTOR UPS
1/8" = 1'-0"

NOTE:
REFER TO MANUFACTURER'S INSTALLATION GUIDE FOR ADDITIONAL INFORMATION.

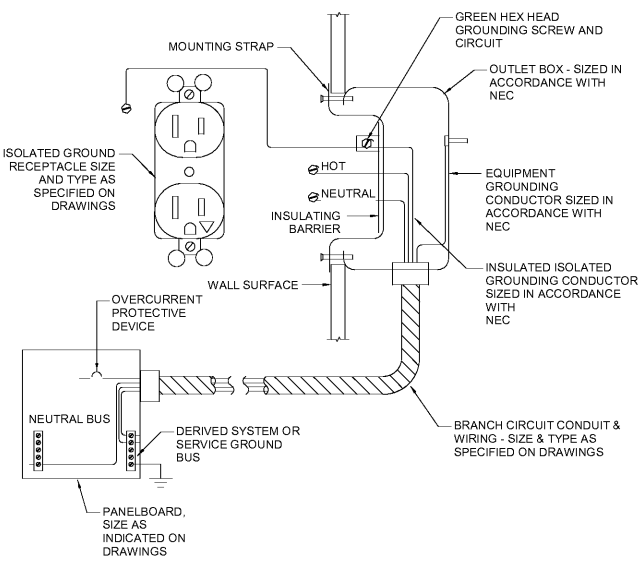
8 TYPICAL ATM STATION
1/8" = 1'-0"



9 DEVICE MOUNTING HEIGHT
1/8" = 1'-0"



10 ISOLATED GROUND RECEPTACLE WIRING
1/8" = 1'-0"



ISSUE BLOCK	NO.	DESCRIPTION	DATE
1	90% CD's		05/10/19
2	100% SET		06/14/19
3	90% AIM 4.0		08/14/19
4	100% AIM 4.0		09/11/19

CHECKED BY: JLB
DRAWN BY: KEM
DOCUMENT DATE: 08/14/19
PROTO:



Jaime Andres Castaneda
Professional Engineer
License No. 72199
State of Florida
10000 Castaneda, P.E.
License #72199
10000 Castaneda, P.E.
10000 Castaneda, P.E.
10000 Castaneda, P.E.

ELECTRICAL DETAILS