

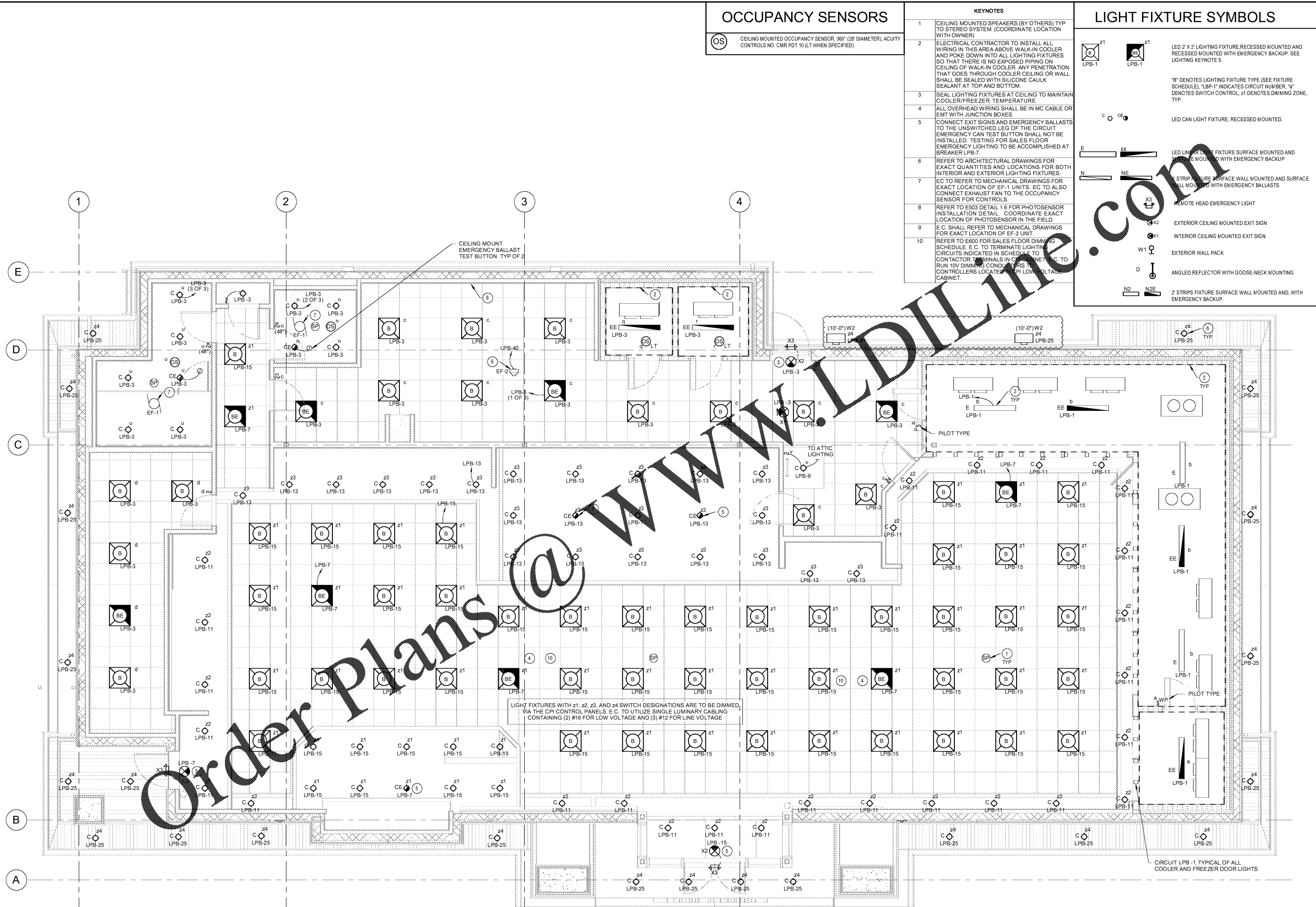
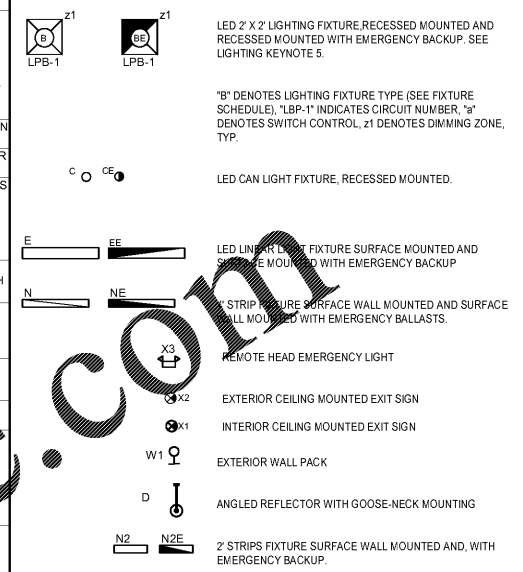
### OCCUPANCY SENSORS

OS CEILING MOUNTED OCCUPANCY SENSOR, 360° (28" DIAMETER), ACUTY CONTROLS NO. CMR PDT 10 (LT WHEN SPECIFIED)

### KEYNOTES

- 1 CEILING MOUNTED SPEAKERS (BY OTHERS) TYP TO STEREO SYSTEM. (COORDINATE LOCATION WITH OWNER)
- 2 ELECTRICAL CONTRACTOR TO INSTALL ALL WIRING IN THIS AREA ABOVE WALK-IN COOLER AND POKE DOWN INTO ALL LIGHTING FIXTURES SO THAT THERE IS NO EXPOSED PIPING ON CEILING OF WALK-IN COOLER. ANY PENETRATION THAT GOES THROUGH COOLER CEILING OR WALL SHALL BE SEALED WITH SILICONE CAULK SEALANT AT TOP AND BOTTOM.
- 3 SEAL LIGHTING FIXTURES AT CEILING TO MAINTAIN COOLER/FREEZER TEMPERATURE.
- 4 ALL OVERHEAD WIRING SHALL BE IN MC CABLE OR EMT WITH JUNCTION BOXES.
- 5 CONNECT EXIT SIGNS AND EMERGENCY BALLASTS TO THE UNSWITCHED LEG OF THE CIRCUIT. EMERGENCY CAN TEST BUTTON SHALL NOT BE INSTALLED. TESTING FOR SALES FLOOR EMERGENCY LIGHTING TO BE ACCOMPLISHED AT BREAKER LPB-7.
- 6 REFER TO ARCHITECTURAL DRAWINGS FOR EXACT QUANTITIES AND LOCATIONS FOR BOTH INTERIOR AND EXTERIOR LIGHTING FIXTURES.
- 7 EC TO REFER TO MECHANICAL DRAWINGS FOR EXACT LOCATION OF EF-1 UNITS. EC TO ALSO CONNECT EXHAUST FAN TO THE OCCUPANCY SENSOR FOR CONTROLS.
- 8 REFER TO E503 DETAIL 1.6 FOR PHOTOSENSOR INSTALLATION DETAIL. COORDINATE EXACT LOCATION OF PHOTOSENSOR IN THE FIELD.
- 9 E.C. SHALL REFER TO MECHANICAL DRAWINGS FOR EXACT LOCATION OF EF-2 UNIT.
- 10 REFER TO E600 FOR SALES FLOOR DIMMING SCHEDULE. E.C. TO TERMINATE LIGHTING CIRCUITS INDICATED IN SCHEDULE TO CONTRACTOR TERMINALS IN CONTROL PANEL TO RUN 10V DIMMING CONDENSED CIRCUIT. CONTROLLERS LOCATED IN RPI LOW VOLTAGE CABINET.

### LIGHT FIXTURE SYMBOLS



LIGHT FIXTURES WITH z1, z2, z3, AND z4 SWITCH DESIGNATIONS ARE TO BE DIMMED, VIA THE CPI CONTROL PANELS. E.C. TO UTILIZE SINGLE LUMINARY CABLING CONTAINING (2) #16 FOR LOW VOLTAGE AND (3) #12 FOR LINE VOLTAGE

CIRCUIT LPB-1, TYPICAL OF ALL COOLER AND FREEZER DOOR LIGHTS

1 ELECTRICAL - LIGHTING PLAN  
1/4" = 1'-0"

HARRISON FRENCH & ASSOCIATES, L.T.D.  
479.273.7780  
1705 S. Walton Blvd, Suite 3  
Bentonville, Arkansas 72712  
www.hfa-ac.com

STIPULATION FOR REUSE  
THIS DOCUMENT IS THE PROPERTY OF HARRISON FRENCH & ASSOCIATES, L.T.D. AND IS NOT TO BE REPRODUCED OR TRANSMITTED IN ANY FORM OR BY ANY MEANS, ELECTRONIC OR MECHANICAL, INCLUDING PHOTOCOPYING, RECORDING, OR BY ANY INFORMATION STORAGE AND RETRIEVAL SYSTEM, WITHOUT THE WRITTEN PERMISSION OF HARRISON FRENCH & ASSOCIATES, L.T.D. UNAUTHORIZED REUSE OR REPRODUCTION OF THIS DOCUMENT IS PROHIBITED AND MAY BE CONSIDERED A VIOLATION OF APPLICABLE LAWS.

Cumberland Electric, Inc.  
SUNRISE AND 4TH STREET  
FORT LAUDERDALE, FL  
JOB NUMBER: 41-1750410

| ISSUE BLOCK  | DATE     |
|--------------|----------|
| 90% CD'S     | 05/10/19 |
| 100% SET     | 06/14/19 |
| 90% AIM 4.0  | 08/14/19 |
| 100% AIM 4.0 | 09/11/19 |
| BULLETIN 3   | 11/08/19 |

CHECKED BY: JLB  
DRAWN BY: KEM  
DOCUMENT DATE: 08/14/19  
PROTO:



James A. Castaneda, P.E.  
License #72199  
Harrison French & Associates, L.T.D.  
OCN 929421

ELECTRICAL LIGHTING PLAN

SHEET: E100