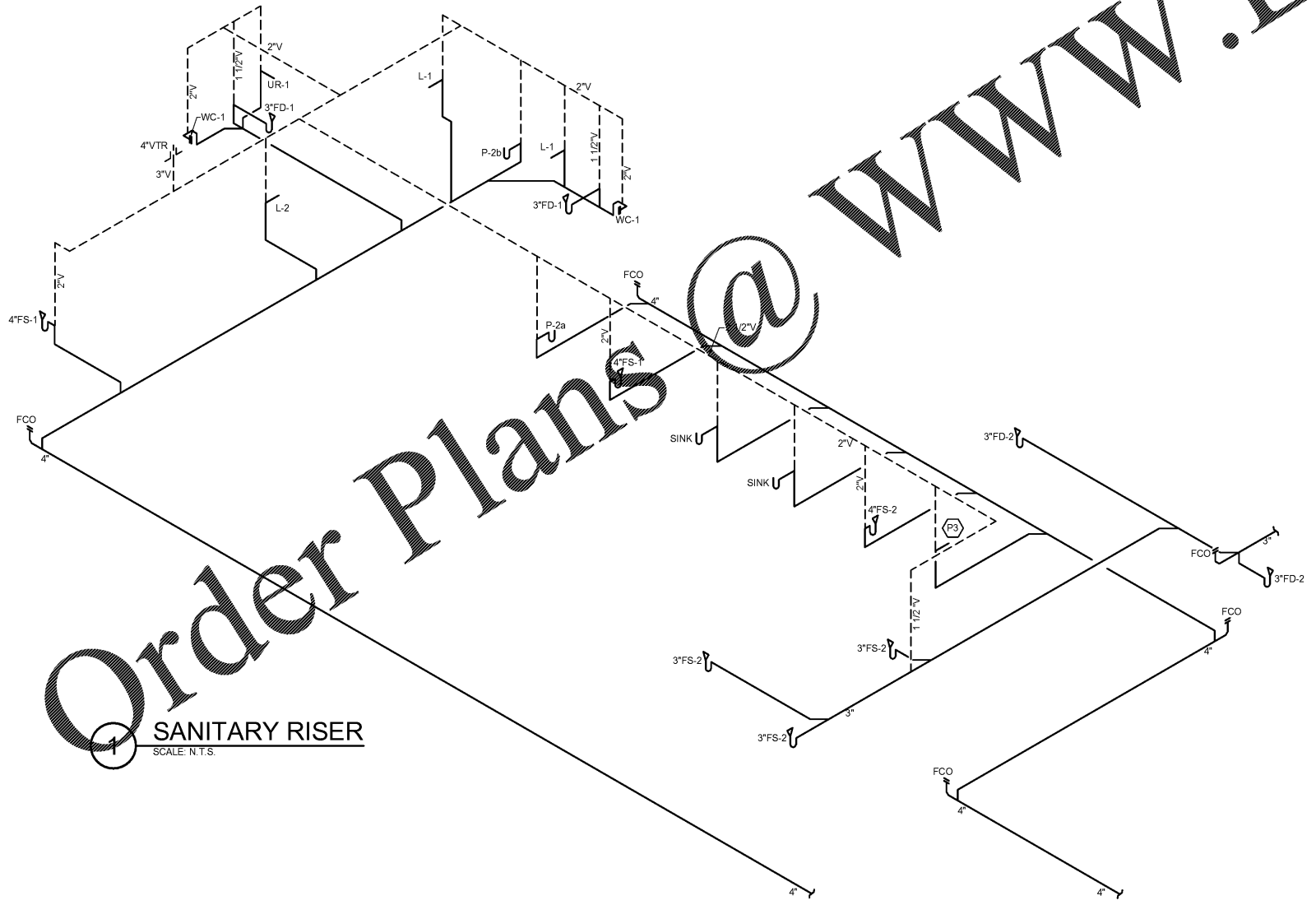
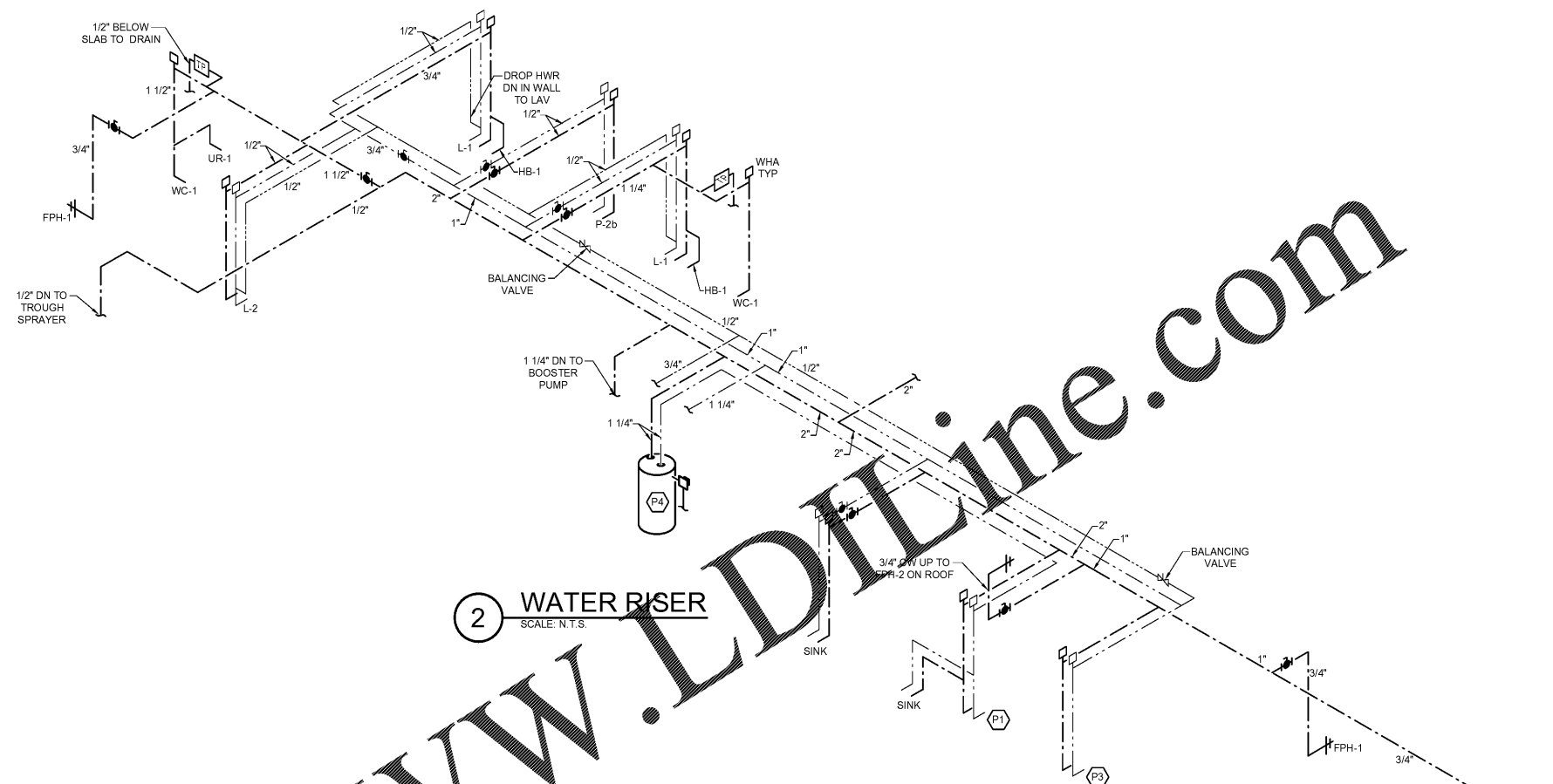


PLUMBING EQUIPMENT CONNECTION SCHEDULE									
MARK	FIXTURE	BRANCH SIZES (MIN.)					ROUGH-IN REQUIREMENTS	NOTES	
		FW	DFW	CW	HW	WASTE			
REFRIGERATION EQUIPMENT SCHEDULE									
B12	SANDWICH CASE					1" (IDW)		E	
FOOD SERVICE EQUIPMENT SCHEDULE									
C12.1	HEATED PIZZA DISPLAY		3/8"			1/2" (IDW)		G, H	
CHILL ZONE EQUIPMENT SCHEDULE									
E-1	ICE/BEVERAGE DISPENSER	3/8"	(2) 3/8"			3/4" (IDW)		G, H	
E-3	FROZEN MILKSHAKE BLENDER		1/4"			3/4" (IDW)		G, H	
E-4	FROZEN BEVERAGE DISPENSER	3/8"						G	
COFFEE EQUIPMENT SCHEDULE									
F-2	ICED COFFEE/TEA BREWER		1/4"					G	
F-5	6 FLAVOR CAPPUCCINO MACH W/ HOT WATER		1/4"					G	
F-6	SPECIALTY COFFEE MACHINE (FUTURE)	3/8"				2" (IDW)		G, H	
F-9	SINGLE SOFT HEAT COFFEE BREWER		1/4"					G	
F-10	DUAL SOFT HEAT COFFEE BREWER		1/4"					G	
F-11	COUNTERTOP ICE DISPENSER (FUTURE)					3/4" (IDW)		H	
F-13	NITRO COFFEE DISPENSER (FUTURE)	3/8"						G	
F-15	FROZEN COFFEE BEVERAGE		1/4"					G	
F-16	ICE MAKER/DISPENSER	1/4"				3/4" (IDW)		G, H	
F-17	ICE MAKER/STORAGE BIN	3/8"				1/2" (IDW)		E, G	
F-20	SMOOTHIE MACHINE & RINSE STATION (FUTURE)	3/8"				1 1/8" (IDW)		G, H	
PLUMBING EQUIPMENT SCHEDULE									
P-1	3 - BAY SERVICE SINK		1/2"	1/2"	3"	1 1/2"	WATER: 12" AFF	D, E, F	
P-3	UTILITY HAND SINK		1/2"	1/2"	1 1/2"	1 1/4"	WATER: 18" AFF	B, C	
SINK	PROVIDED BY MILLWORK VENDOR		1/2"	1/2"	2"	1 1/4"		B, C	
FAUCET	PROVIDED BY MILLWORK VENDOR	1/2"							

- GENERAL NOTES (ALL EQUIPMENT):
 1. EQUIPMENT FURNISHED BY CUMBERLAND FARMS. ROUGH-IN & FINAL CONNECTIONS BY CONTRACTOR.
- NOTES:
 A. PROVIDE SHUT-OFF VALVES.
 B. PROVIDE CHROME PLATED P-TRAP AND ESCUTCHEON.
 C. PROVIDE CHROME PLATED ANGLE SUPPLY, FLEXIBLE RISER, AND WHEEL HANDLE WITH ESCUTCHEON.
 D. SINK FAUCETS PROVIDED WITH INTEGRAL CHECK VALVES.
 E. PROVIDE FULL-SIZE DRAIN LINE FROM EQUIPMENT. END OVER FLOOR SINK WITH 2" AIR GAP.
 F. IF PLUMBING PLAN AND RISER SHOWS THE SINK INDIRECTLY CONNECTED TO FLOOR SINK, THEN WASTE ROUGH-IN HEIGHT AND VENT SIZE DO NOT APPLY.
 G. PROVIDE BALL VALVE AND WATTS SD-2 CHECK VALVE ON FILTERED WATER SUPPLY. PROVIDE FEMALE NPT VALVE DOWNSTREAM OF VB FOR CONNECTION TO EQUIPMENT.
 H. PROVIDE FULL SIZE DRAIN LINE FROM EQUIPMENT. END OVER HUB DRAIN IN MILLWORK.



Order Plans @ www.LDLine.com

HFA
 HARRISON FRENCH ASSOCIATES, LTD.
 1705 S. Walton Blvd. Suite 3
 Bentonville, Arkansas 72712
 www.hfa-ae.com
 479.273.7780

STIPULATION FOR REUSE
 THIS DRAWING WAS PREPARED FOR THE PROJECT IDENTIFIED HEREIN. IT IS NOT TO BE REUSED FOR ANY OTHER PROJECT WITHOUT THE WRITTEN PERMISSION OF HARRISON FRENCH ASSOCIATES, LTD. THE USER OF THIS DRAWING FOR ANY OTHER PROJECT IS RESPONSIBLE FOR OBTAINING THE NECESSARY PERMISSIONS FROM THE ORIGINAL DESIGNER. HARRISON FRENCH ASSOCIATES, LTD. ACCEPTS NO LIABILITY FOR ANY ERRORS OR OMISSIONS IN THIS DRAWING. PROJECT IS NOT AUTHORIZED TO BE REPRODUCED OR TRANSMITTED IN ANY FORM OR BY ANY MEANS, ELECTRONIC OR MECHANICAL, INCLUDING PHOTOCOPYING, RECORDING, OR BY ANY INFORMATION STORAGE AND RETRIEVAL SYSTEM.

Cumberland
 SUNRISE & 4TH
 FORT LAUDERDALE, FL 33304
 JOB NUMBER: 41-17-00410

ISSUE BLOCK	
90% CDs	05/10/19
100% Set	06/14/19
90% AIM4.0	08/14/19
100% AIM4.0	09/11/19

CHECKED BY: BRT
 DRAWN BY: BRT



2019.09.11 21:25:43-0500
 Greg Schubertman, P.E.
 License #72212
 Harrison French & Associates, LTD.
 ODA #02421
 Printed copies of this document are not considered signed and sealed and the signature must be verified on any electronic copies.

PLUMBING RISERS