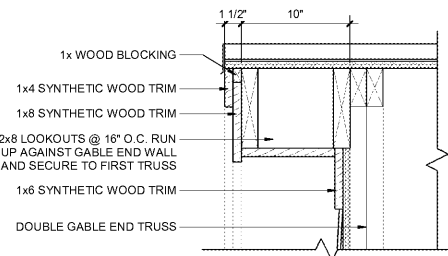
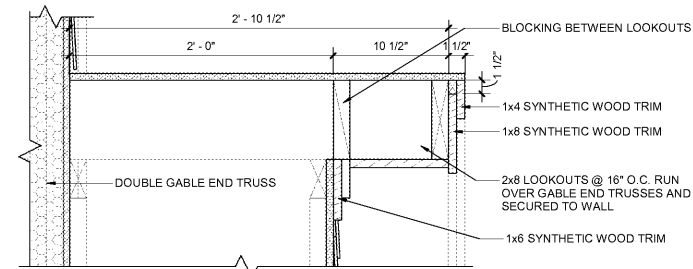


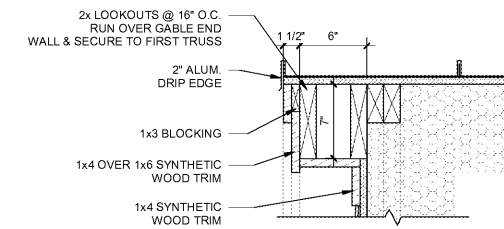
5 RAKE @ SHED DORMER
1 1/2" = 1'-0"



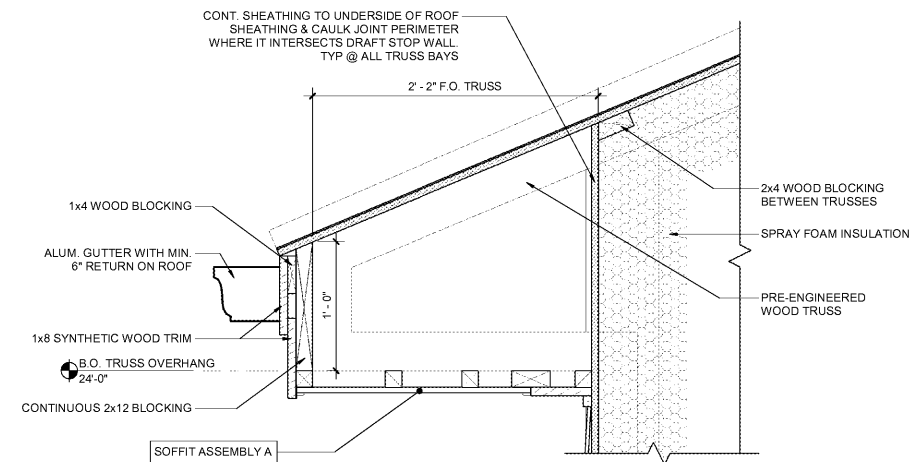
8 RAKE @ ENTRANCE
1 1/2" = 1'-0"



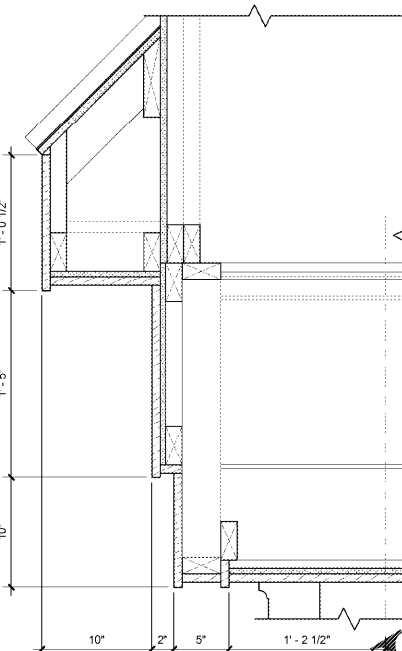
4 RAKE @ SIDE GABLE
1 1/2" = 1'-0"



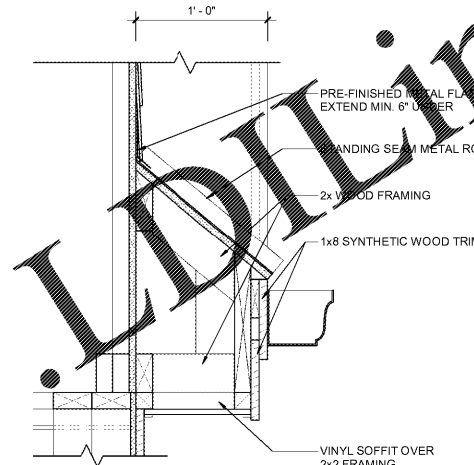
9 RAKE @ FAUX DORMERS
1 1/2" = 1'-0"



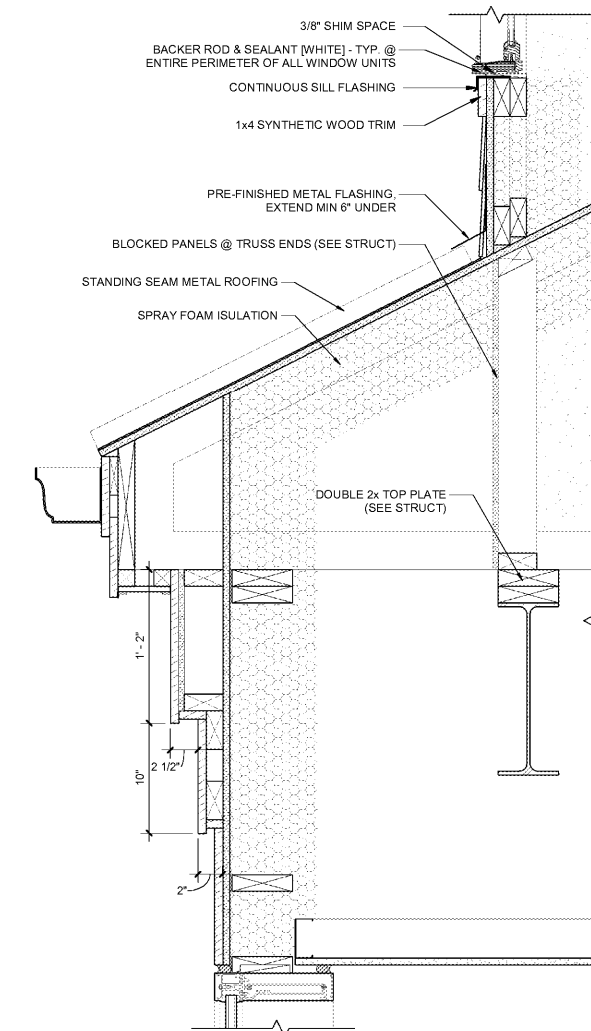
2 TYPICAL 5/12 ROOF EAVE
1 1/2" = 1'-0"



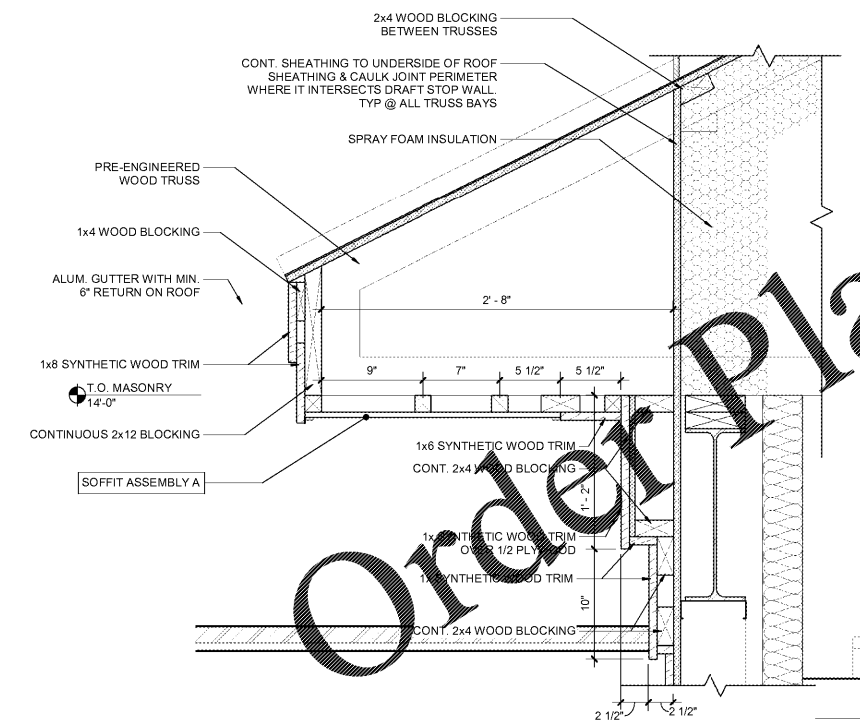
6 EAVE @ ENTRANCE
1 1/2" = 1'-0"



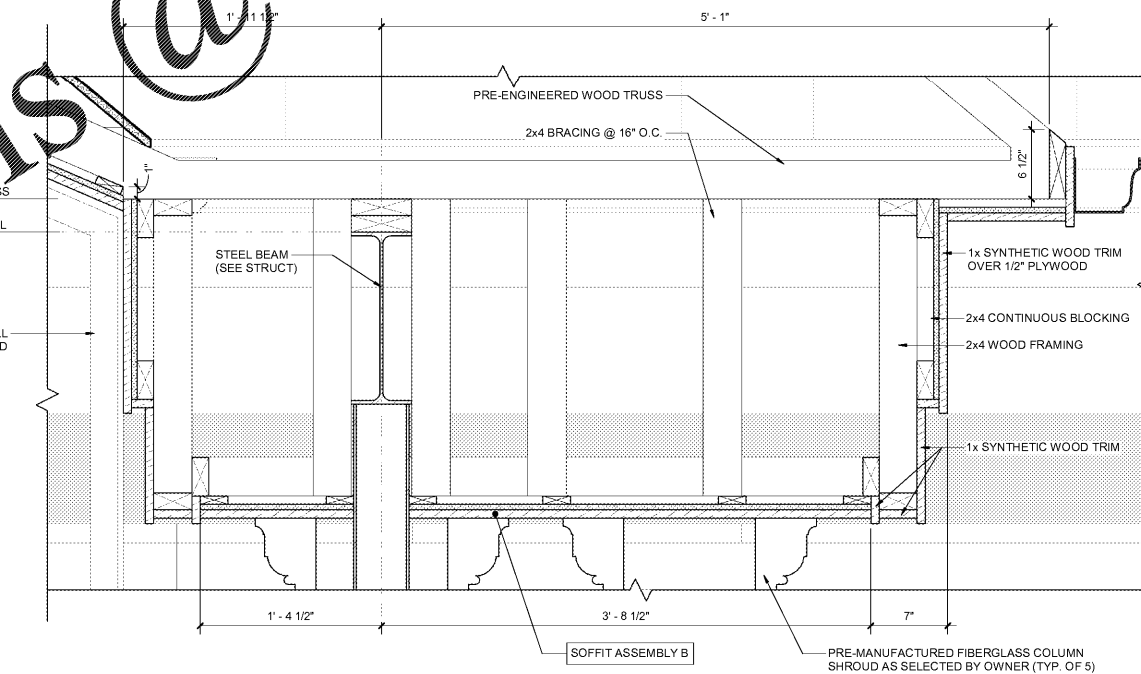
7 TYPICAL GABLE END ROOF RETURN
1 1/2" = 1'-0"



12 HEAD DETAIL @ CURTAINWALL BUMPOUT
1 1/2" = 1'-0"



1 TYPICAL 6/12 ROOF EAVE
1 1/2" = 1'-0"



3 ENTRY COLUMN SOFFIT
1 1/2" = 1'-0"

WWW.LDIDLINE.COM

Order Plans @

HFA
HARRISON FRENCH & ASSOCIATES, LTD
508.528.0770
31 Hayward Street
Franklin, Massachusetts 02038
www.hfa-ac.com

STIPULATION FOR REUSE
THIS DOCUMENT IS THE PROPERTY OF HARRISON FRENCH & ASSOCIATES, LTD. IT IS TO BE USED ONLY FOR THE PROJECT AND SITE SPECIFICALLY IDENTIFIED ON THIS DRAWING. IT IS NOT TO BE REPRODUCED, COPIED, OR TRANSMITTED IN ANY FORM OR BY ANY MEANS, ELECTRONIC OR MECHANICAL, INCLUDING PHOTOCOPYING, RECORDING, OR BY ANY INFORMATION STORAGE AND RETRIEVAL SYSTEM, WITHOUT THE WRITTEN PERMISSION OF HARRISON FRENCH & ASSOCIATES, LTD.

Cumberland
SUNRISE & 4TH
FORT LAUDERDALE, FL 33304
JOB NUMBER: 41-17-00410

| ISSUE BLOCK | |
|--------------|----------|
| 90% CDs | 05/10/19 |
| 100% SET | 06/14/19 |
| 90% AIM4.0 | 08/14/19 |
| 100% AIM 4.0 | 09/11/19 |

CHECKED BY: JEO
DRAWN BY: ZC
DOCUMENT DATE: 09/11/19

STATE OF FLORIDA
JAMES E. CHEN
ARCHITECT
AR37371
Date: 2019/08/14 11:07:40-0400
James E. Chen, Architect
Lic. No. 45492074
Harrison French & Associates, LTD
CMAA No. 2009011020

EXTERIOR
DETAILS
SHEET:
A503

9/11/2019 3:12:41 PM
C:\Users\jch\OneDrive\Documents\2019 Revit\Projects\41-17-00410\41-17-00410_503.dwg
www.lidline.com