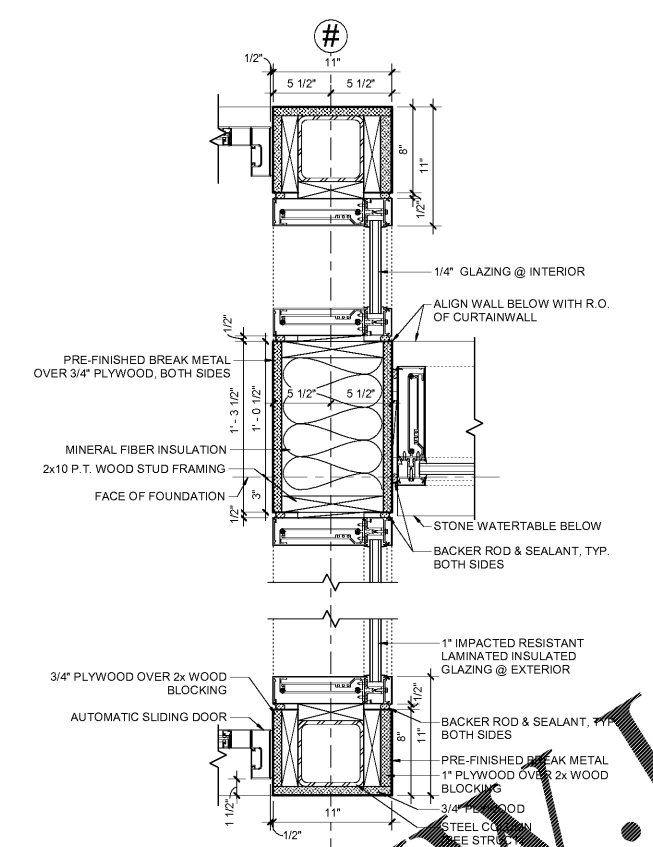
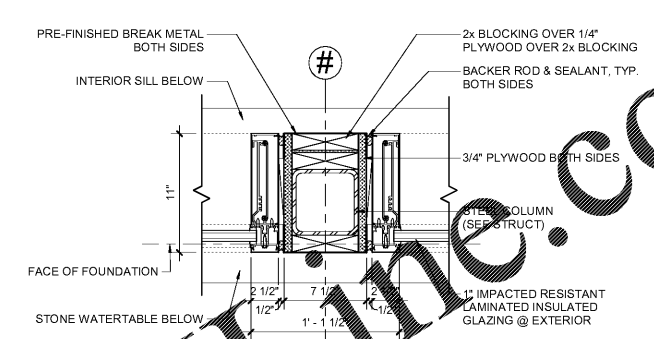


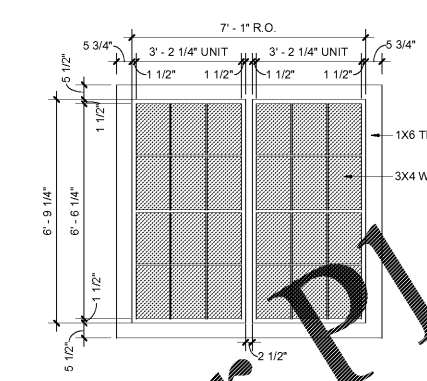
9 CURTAINWALL BUMPOUT DETAIL
1 1/2" = 1'-0"



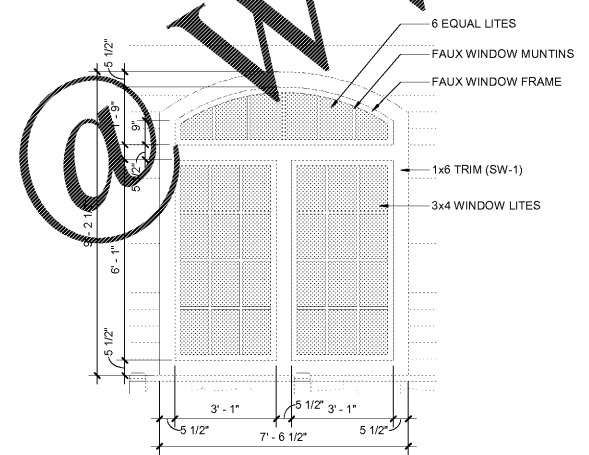
8 CURTAINWALL VESTIBULE DETAIL
1 1/2" = 1'-0"



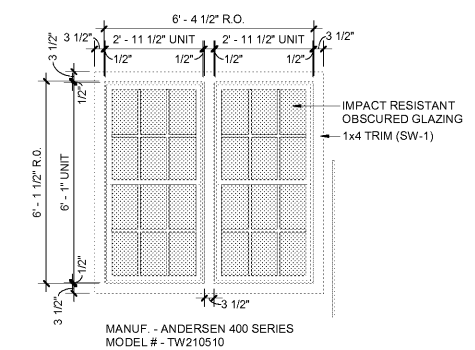
CURTAINWALL COLUMN DETAIL
1 1/2" = 1'-0"



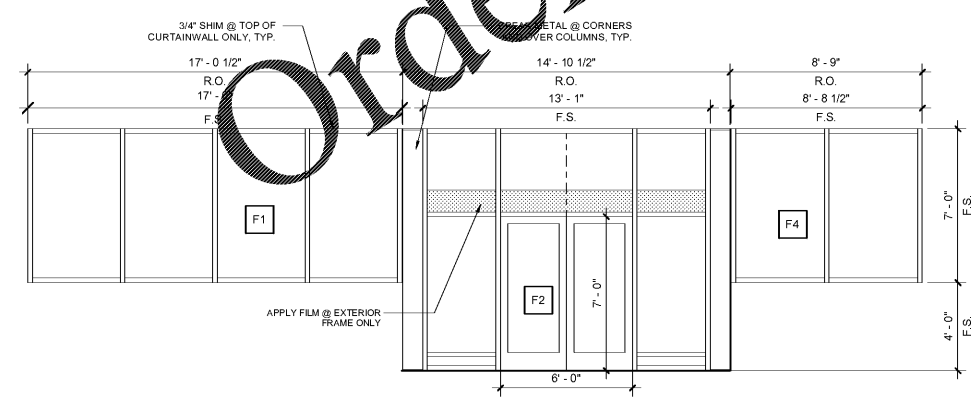
10 FAUX WINDOW - F9
3/8" = 1'-0"



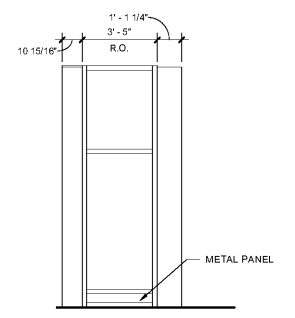
2 FAUX WINDOW - F7
3/8" = 1'-0"



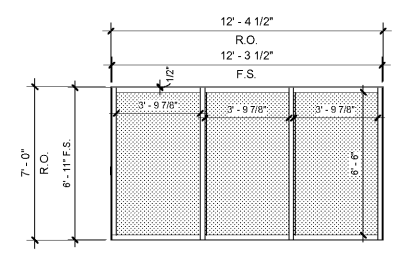
1 DORMER WINDOW - F8
3/8" = 1'-0"



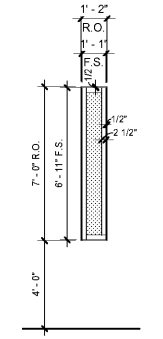
6 CURTAINWALL ELEVATION - F1,F2,F4
1/4" = 1'-0"



5 CURTAINWALL ELEVATION - F3
1/4" = 1'-0"



4 CURTAINWALL ELEVATION - F5
1/4" = 1'-0"



3 CURTAINWALL ELEVATION - F6
1/4" = 1'-0"

- GENERAL NOTES**
- STOREFRONT / CURTAINWALL:**
- STOREFRONT/CURTAINWALL DESIGN TO BE BASED ON LOCAL WIND LOAD REQS. SUBMIT CALCULATIONS WITH SHOP DWGS. MANUFACTURER TO PROVIDE FRAME DESIGN FOR SITES WITH HIGH WIND LOAD REQS.
 - ALUM CURTAINWALL SYSTEM SHALL BE "1600 WALL SYSTEM 1" (2 1/2" X 10 13/16") WITH PERIMETER "1" ANCHOR AS MANUFACTURED BY KAWNEER, WITH A FLOUROPOLYMER FINISH, COLOR - "BONE WHITE." ALL ALUM. FRAMING MEMBERS SHALL BE THERMAL BREAK TYPES.
 - ALL EXTERIOR SEALANT UTILIZED FOR THE INSTALLATION OF ALUMINUM STOREFRONT/CURTAINWALL SYSTEM SHALL BE "TREMCO"-DYMONIC OR EQUAL. COLOR: "WHITE"
 - PROVIDE APPLICABLE MIAMI-DADE NOA AND PERMITS FOR ALL PRODUCTS SPECIFIED. INSTALLATION MUST FOLLOW APPROVED NOA.
 - ALL GLAZING SHALL BE IMPACT RESISTANT GLAZING. SEE SPECIFICATIONS FOR MORE INFO.
 - EXTERIOR VESTIBULE GLAZING TO BE 1 5/16" IMPACT RESISTANT INSULATED WITH SOLARBAN 60.
 - INTERIOR VESTIBULE GLAZING TO BE 1/4" THICK, TEMPERED.
 - 1" INSULATED OPAQUE BLACK SPANDREL GLAZING AT LOCATIONS INDICATED BY "S"
 - TEMPERED GLAZING REQUIRED AT LOCATIONS INDICATED BY "T" OR AS REQUIRED BY CODE.

PROJECT LOCATED IN A HIGH WIND ZONE: YES

HFA
HARRISON FRENCH & ASSOCIATES, LTD.
508.528.0770
31 Hayward Street
Franklin, Massachusetts 02038
www.hfa-ac.com

STIPULATION FOR REUSE
THIS DOCUMENT IS THE PROPERTY OF HARRISON FRENCH & ASSOCIATES, LTD. IT IS TO BE USED ONLY FOR THE PROJECT AND NOT TO BE REPRODUCED OR TRANSMITTED IN ANY FORM OR BY ANY MEANS, ELECTRONIC OR MECHANICAL, INCLUDING PHOTOCOPYING, RECORDING, OR BY ANY INFORMATION STORAGE AND RETRIEVAL SYSTEM. WITHOUT THE WRITTEN PERMISSION OF HARRISON FRENCH & ASSOCIATES, LTD. NO PART OF THIS DOCUMENT MAY BE REPRODUCED OR TRANSMITTED IN ANY FORM OR BY ANY MEANS, ELECTRONIC OR MECHANICAL, INCLUDING PHOTOCOPYING, RECORDING, OR BY ANY INFORMATION STORAGE AND RETRIEVAL SYSTEM.

Cumberland
SUNRISE & 4TH
FORT LAUDERDALE, FL 33304
JOB NUMBER: 41-17-00410

ISSUE BLOCK	
90% CDs	05/10/19
100% SET	06/14/19
90% AIM 4.0	08/14/19
100% AIM 4.0	09/11/19

CHECKED BY: JEO
DRAWN BY: ZC
DOCUMENT DATE: 09/11/19

STATE OF FLORIDA
JAMES E. OWENS
ARCHITECT
AR37371
Date: 2019-09-11 17:09:32-0400
James E. Owens, Architect
Licenses: AR37371
Harrison French & Associates, LTD
CMAA, INC. 2009011020

GLAZING ELEVATIONS & DETAILS
SHEET: **A500**

Order Plans

9/11/2019 3:12:17 PM
C:\Users\cmr\OneDrive\Documents\2019 Revit Projects\41-17-00410\AR37371\AR37371.dwg
1:000:GLAZING ELEVATIONS & DETAILS