

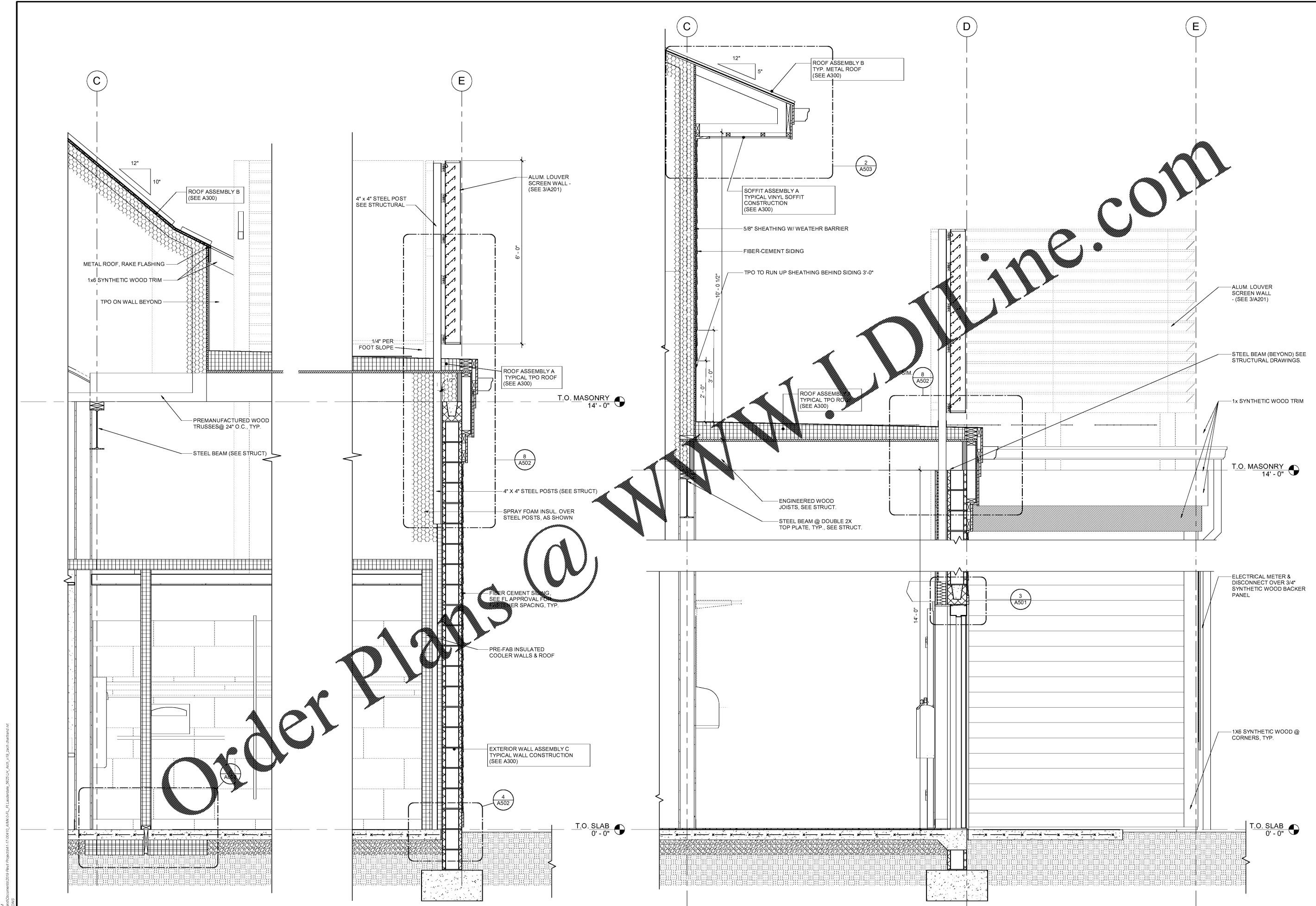
STIPULATION FOR REUSE
 THE INFORMATION CONTAINED HEREIN IS THE PROPERTY OF HARRISON FRENCH & ASSOCIATES, LTD. AND IS NOT TO BE REPRODUCED, COPIED, OR TRANSMITTED IN ANY FORM OR BY ANY MEANS, ELECTRONIC OR MECHANICAL, INCLUDING PHOTOCOPYING, RECORDING, OR BY ANY INFORMATION STORAGE AND RETRIEVAL SYSTEM, WITHOUT THE WRITTEN PERMISSION OF HARRISON FRENCH & ASSOCIATES, LTD. THIS STIPULATION IS APPLICABLE TO ALL PROJECTS AND IS NOT TO BE DELETED OR MODIFIED IN ANY MANNER. THE USER OF THIS INFORMATION AGREES TO HOLD HARRISON FRENCH & ASSOCIATES, LTD. HARMLESS FROM AND AGAINST ALL CLAIMS, DAMAGES, LOSSES, AND EXPENSES, INCLUDING REASONABLE ATTORNEY'S FEES, ARISING OUT OF OR RESULTING FROM THE REUSE OF THIS INFORMATION IN ANY MANNER NOT AUTHORIZED BY HARRISON FRENCH & ASSOCIATES, LTD.

ISSUE BLOCK	
90% CDs	05/10/19
100% SET	06/14/19
90% AIM 4.0	08/14/19
100% AIM 4.0	09/11/19

CHECKED BY: JEO
 DRAWN BY: ZC
 DOCUMENT DATE: 09/11/19

STATE OF FLORIDA
 ARCHITECTS
 JAMES E. OWENS
 ARS7371
 James E. Owens
 Date: 2019-08-19 14:59:04-0700
 James E. Owens, Architect
 License #43492019
 Harrison French & Associates, Ltd.
 CCA #19-2280011203

WALL SECTIONS



2 REAR WALL SECTION @ WALK-IN STORAGE COOLER
 3/4" = 1'-0"

1 REAR WALL SECTION @ RECEIVING/UTILITY
 3/4" = 1'-0"

9/11/2019 3:30:58 PM
 C:\Users\johndoe\Documents\2019 Revit Projects\41-17-00410_AIM4.0\A312.dwg - 1/8" = 1'-0" - 1/8" = 1'-0" - 1/8" = 1'-0"
 1/8" = 1'-0"