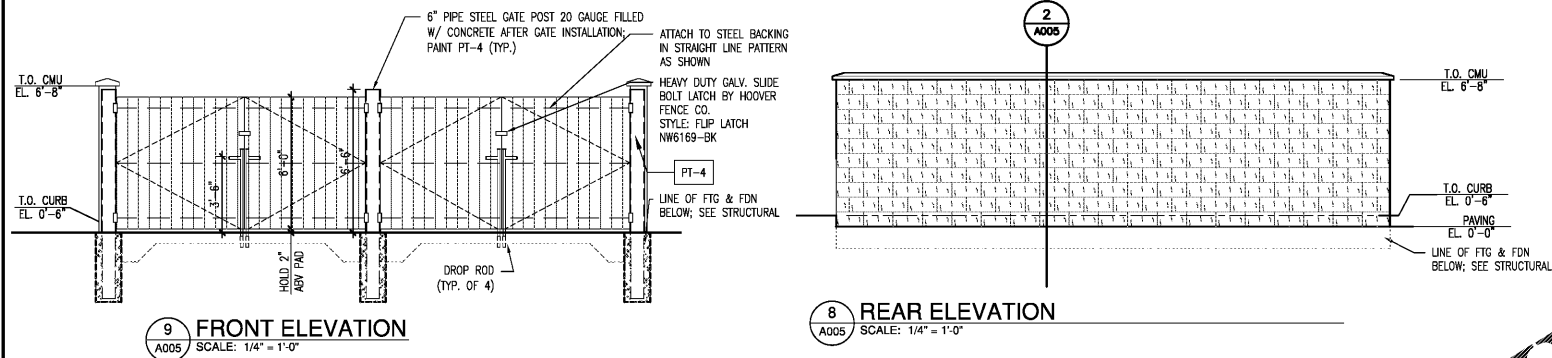


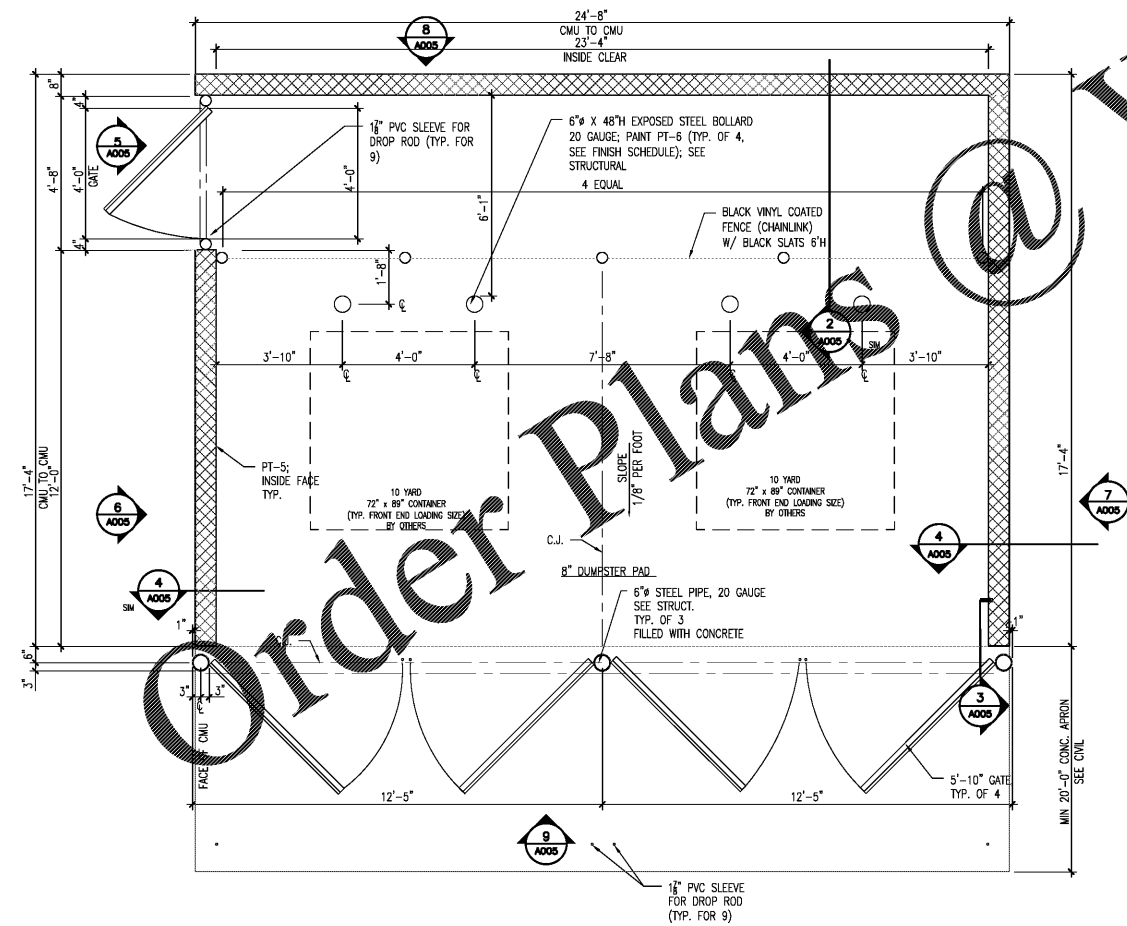
FINISH SCHEDULE					
ANNO #	DESC.	MANUFACTURER	MODEL	COLOR	NOTES
CMU-1	SPLIT FACE CMU			TO COMPLEMENT BUILDING	SUBMIT SAMPLES TO ARCHITECT FOR REVIEW
PT-4	PAINT	SHERWIN WILLIAMS	SW # 7035	AESTHETIC WHITE	METALASTIC DTM SEMI-GLOSS (FOR METAL SURFACES)
PT-5	PAINT	SHERWIN WILLIAMS	SW # 7008	EXTRA WHITE	A100 SATIN FINISH (FOR PLASTIC, CMU, &WD SURFACE)
PT-6	PAINT	SHERWIN WILLIAMS	B66R600	SAFETY YELLOW	PRO INDUSTRIAL ACRYLIC COATING

10 FINISH SCHEDULE
A005 SCALE: NTS

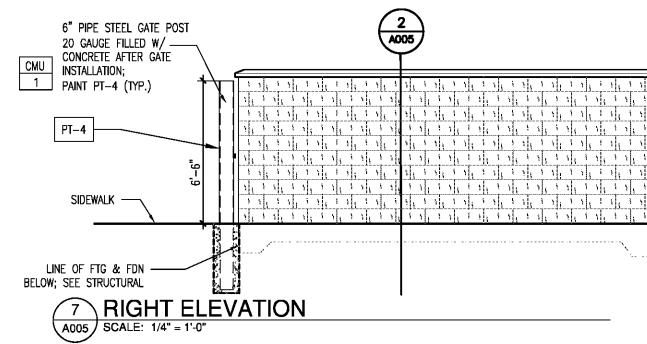


9 FRONT ELEVATION
A005 SCALE: 1/4" = 1'-0"

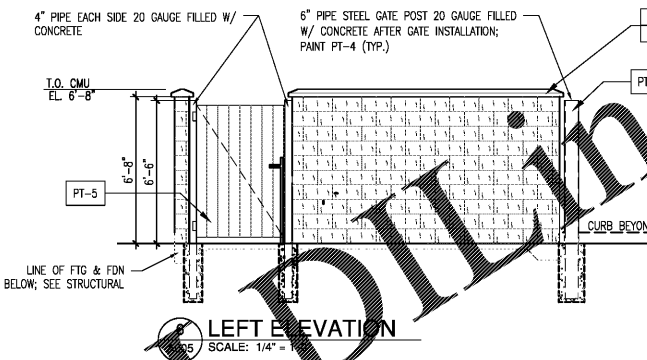
8 REAR ELEVATION
A005 SCALE: 1/4" = 1'-0"



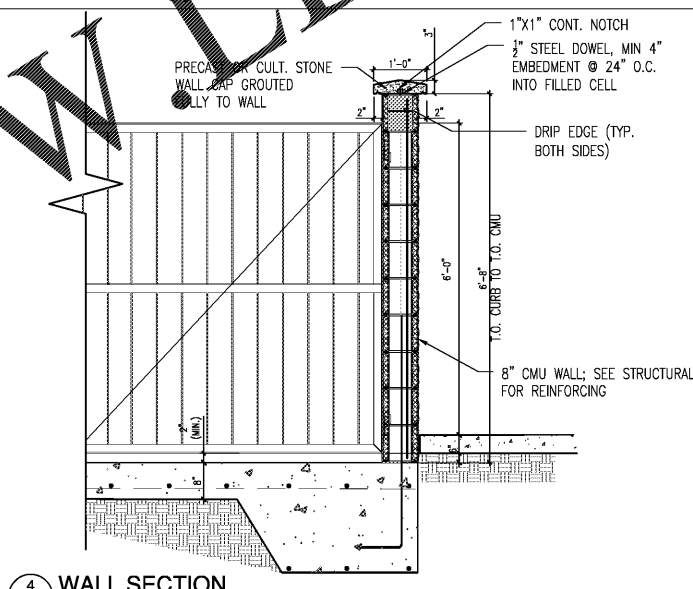
1 ENLARGED FLOOR PLAN @ DUMPSTER ENCLOSURE
A005 SCALE: 3/8" = 1'-0"



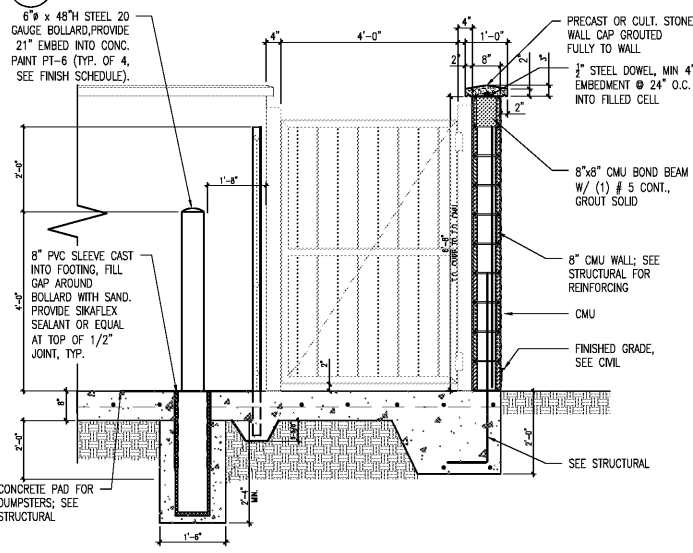
7 RIGHT ELEVATION
A005 SCALE: 1/4" = 1'-0"



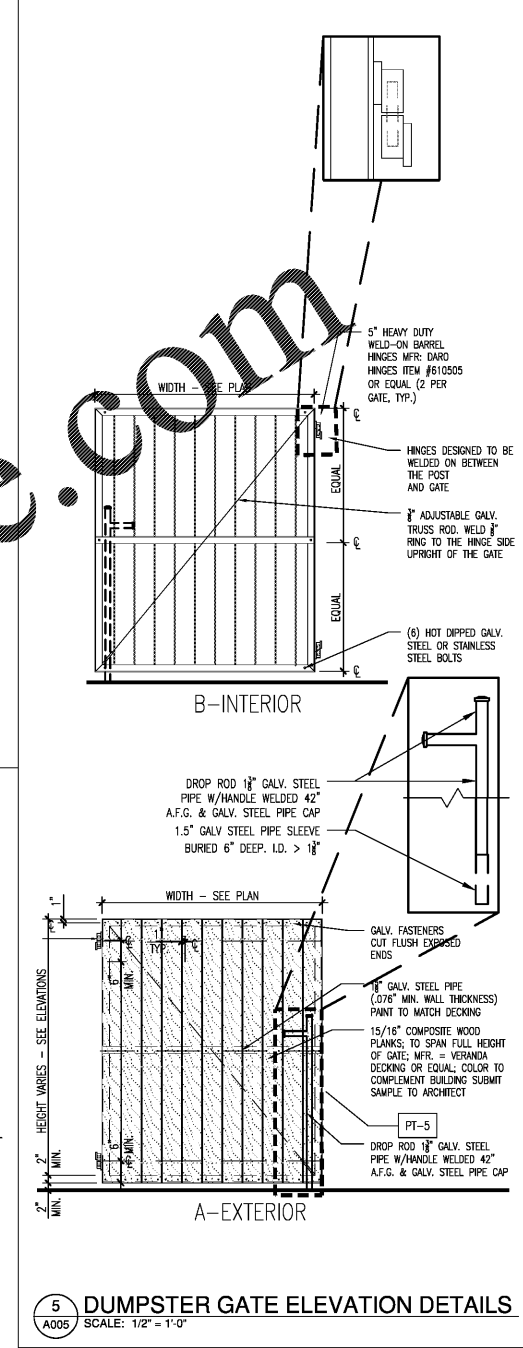
6 LEFT ELEVATION
A005 SCALE: 1/4" = 1'-0"



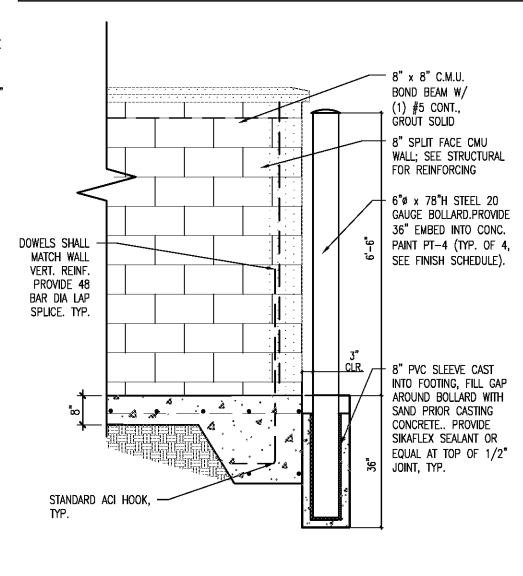
4 WALL SECTION @ INTERIOR BOLLARDS
A005 SCALE: 1/2" = 1'-0"



2 WALL SECTION @ INTERIOR BOLLARDS
A005 SCALE: 1/2" = 1'-0"



5 DUMPSTER GATE ELEVATION DETAILS
A005 SCALE: 1/2" = 1'-0"



3 WALL SECTION
A005 SCALE: 1/2" = 1'-0"

HFA
HARRISON FRENCH & ASSOCIATES, LTD.
508.528.0770
31 Hayward Street
Franklin, Massachusetts 02038
www.hfa-ac.com

STIPULATION FOR REUSE
THIS DOCUMENT IS THE PROPERTY OF HARRISON FRENCH & ASSOCIATES, LTD. IT IS TO BE USED ONLY FOR THE PROJECT AND NOT TO BE REPRODUCED, COPIED, OR TRANSMITTED IN ANY FORM OR BY ANY MEANS, ELECTRONIC OR MECHANICAL, INCLUDING PHOTOCOPYING, RECORDING, OR BY ANY INFORMATION STORAGE AND RETRIEVAL SYSTEM. WITHOUT THE WRITTEN PERMISSION OF HARRISON FRENCH & ASSOCIATES, LTD., NO PART OF THIS DOCUMENT IS TO BE REPRODUCED OR TRANSMITTED IN ANY FORM OR BY ANY MEANS, ELECTRONIC OR MECHANICAL, INCLUDING PHOTOCOPYING, RECORDING, OR BY ANY INFORMATION STORAGE AND RETRIEVAL SYSTEM.

Cumberland
SUNRISE & 4TH
FORT LAUDERDALE, FL 33304
JOB NUMBER: 41-17-00410

ISSUE BLOCK	
90% CDs	05/10/19
100% SET	06/14/19
90% AIM4.0	08/14/19
100% AIM 4.0	09/11/19

CHECKED BY: JEO
DRAWN BY: ZC
DOCUMENT DATE: 09/11/19

STATE OF FLORIDA
JAMES E. CHEN
ARCHITECT
Date: 2019-08-14 17:31:00-0400
James E. Chen, Architect
11000 E. Colonial Ave.
Harrison Pkwy. S.
Hollywood, FL 33026, LTD
FLA. REG. NO. 22800-1102

DUMPSTER ENCLOSURE
ENLARGED PLAN

SHEET:
A005