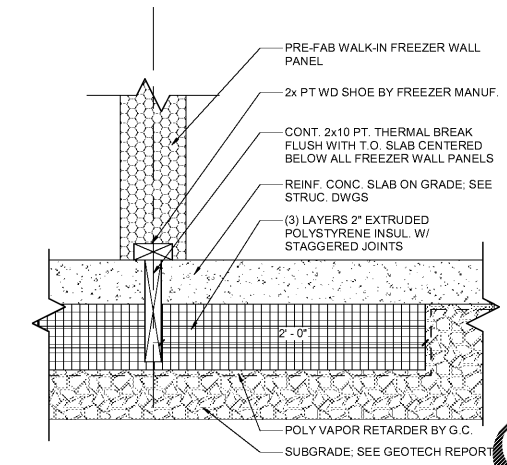
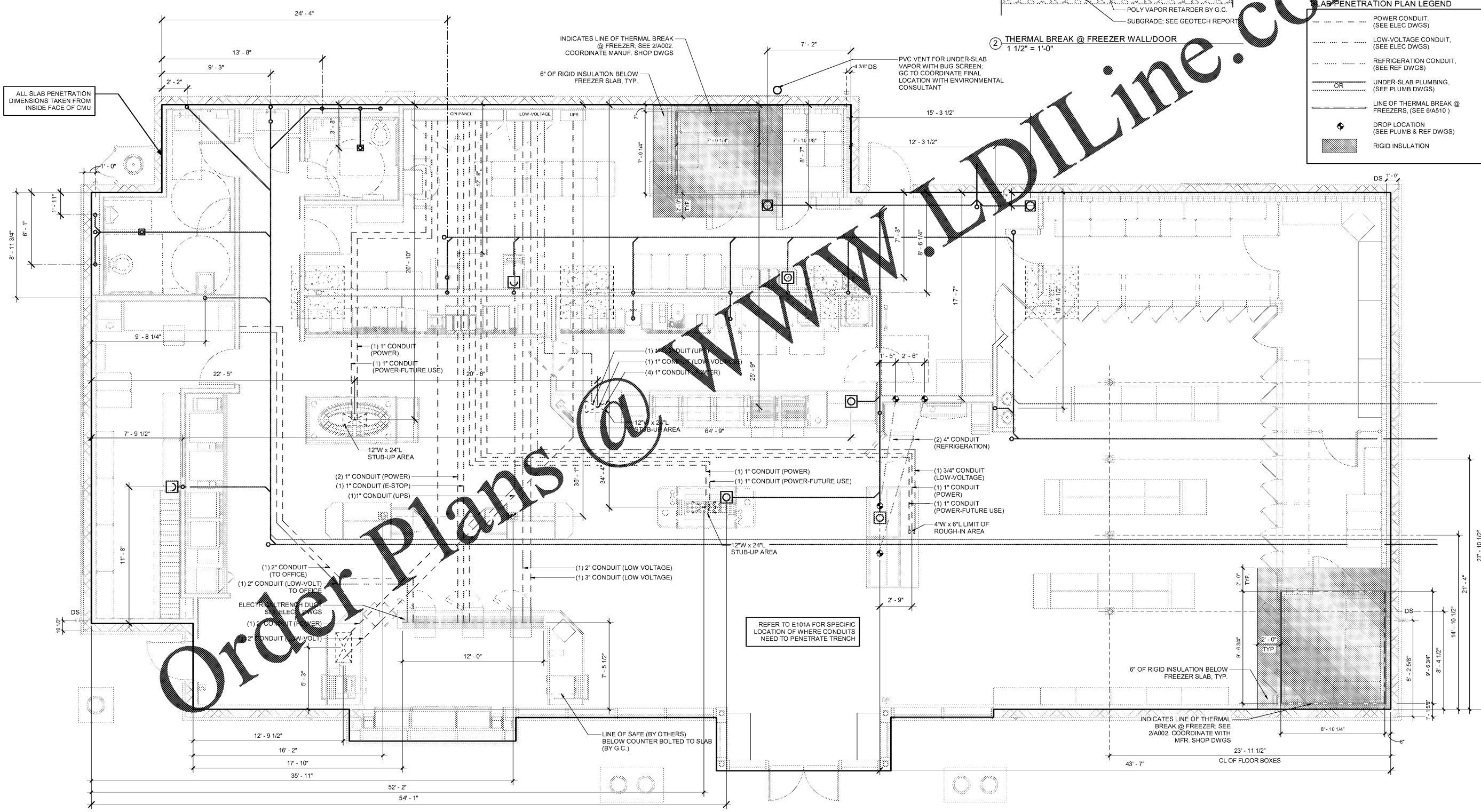


11/20/2019 10:30:27 AM
 C:\Users\jfrancis\OneDrive\Documents\2019 Revit\Projects\21-FIT-GARFC_ARCH_01\21-FIT-GARFC_ARCH_01.dwg - R:_R\jfrancis\work\21-FIT-GARFC_ARCH_01.dwg



- GENERAL NOTES**
- UNDER-SLAB LAYOUT SHOWN FOR DIAGRAMMATIC PURPOSE ONLY. GENERAL CONTRACTOR SHALL BE RESPONSIBLE FOR ACTUAL LAYOUT BASED ON FIELD CONDITIONS AND SHALL COORDINATE WITH ALL DISCIPLINES.
 - REFER TO MECHANICAL, ELECTRICAL AND PLUMBING (MEP) DRAWINGS FOR ADDITIONAL INFORMATION. INFORMATION SHOWN ON MEP SHALL OVER RULE INFORMATION SHOWN HERE.
 - ALL DIMENSIONS ARE TO BE OUTSIDE FACE OF FOUNDATION WALL, UNLESS TO PENETRATIONS, WHICH ARE TO CENTERLINE.
 - ALL THERMAL BREAK DIMENSIONS BASED ON MANUFACTURER. SNOWMAN, CONFIRM MANUFACTURER IS CORRECT & COORDINATE FREEZER PANEL SHOP DRAWINGS WITH PROJECT MANAGER PRIOR TO INSTALLATION.
- MAINTAIN CONTINUOUS THERMAL BREAK UNDER FREEZERS. DO NOT INTERRUPT FREEZER THERMAL BREAK WITH ISOLATION FORM WHERE OCCURS. (SEE STRUCT DWGS)
- SLAB PENETRATION PLAN LEGEND**
- POWER CONDUIT, (SEE ELEC DWGS)
 - LOW-VOLTAGE CONDUIT, (SEE ELEC DWGS)
 - REFRIGERATION CONDUIT, (SEE REF DWGS)
 - OR --- UNDER-SLAB PLUMBING, (SEE PLUMB DWGS)
 - LINE OF THERMAL BREAK @ FREEZERS, (SEE @/A510)
 - ⊕ DROP LOCATION (SEE PLUMB & REF DWGS)
 - ▨ RIGID INSULATION

① SLAB PENETRATION PLAN
 1/4" = 1'-0"

HFA
 HARRISON FRENCH & ASSOCIATES, LTD.
 508.528.0770
 31 Hayward Street
 Franklin, Massachusetts 02038
 www.hfa-ac.com

STIPULATION FOR REUSE
 THESE DRAWINGS ARE THE PROPERTY OF HARRISON FRENCH & ASSOCIATES, LTD. AND ARE NOT TO BE REPRODUCED, COPIED, OR TRANSMITTED IN ANY FORM OR BY ANY MEANS, ELECTRONIC OR MECHANICAL, INCLUDING PHOTOCOPYING, RECORDING, OR BY ANY INFORMATION STORAGE AND RETRIEVAL SYSTEM, WITHOUT THE WRITTEN PERMISSION OF HARRISON FRENCH & ASSOCIATES, LTD. ANY UNAUTHORIZED REUSE OF THESE DRAWINGS FOR ANY PROJECT OTHER THAN THAT SPECIFICALLY AUTHORIZED BY HARRISON FRENCH & ASSOCIATES, LTD. IS STRICTLY PROHIBITED AND MAY BE CONSIDERED A VIOLATION OF APPLICABLE LAWS.

Cumberland
 SUNRISE & 4TH
 FORT LAUDERDALE, FL 33304
 JOB NUMBER: 41-17-00410

ISSUE BLOCK

90% CDs	05/10/19
100% SET	06/14/19
90% AIM4.0	08/14/19
100% AIM 4.0	09/11/19

CHECKED BY: JEO
 DRAWN BY: ZC
 DOCUMENT DATE: 09/11/19



James E. O'Connell, Architect
 License #43482029
 Harrison French & Associates, LTD
 CCA, INC. 2009-11203

SLAB PENETRATION PLAN

SHEET:
A002