



PUBLIC WORKS DEPARTMENT
TRAFFIC ENGINEERING DIVISION
2300 W. Commercial Boulevard - Fort Lauderdale, Florida 33309 - 954-847-2600 - FAX 954-847-2700

MAINTENANCE OF TRAFFIC - SCHOOL/PEDESTRIAN

The Maintenance of Traffic plan, provided by the Contractor, shall include provisions for pedestrian and/or school student traffic as well as vehicular traffic. The following are minimum requirements:

- 1. The safe walk route for all school students within the vicinity of the construction zone shall be maintained during student arrival and dismissal times. If the current walking surface cannot be maintained, then a temporary walkable surface shall be created. The safe walk route shall be separated from the construction activity during the entire length of the project encompassing the entire walk route with proper pedestrian openings at designated crossings in compliance with FDOT Design Standards Index No. 600 as well as meeting all ADA requirements.
2. All construction equipment activity around any designated crosswalk shall cease a pre-construction meeting will be held to determine all bus routes and to make any necessary arrangements for rerouting. The Special Projects Coordinator from the Broward County Traffic Engineering Division, (954) 847-2600, will be notified and may attend the pre-construction meeting.
3. In the case that a designated crossing or any portion of the designated walk route cannot be maintained, the Contractor shall notify the Special Projects Coordinator at Broward County Traffic Engineering Division, (954) 847-2600, a minimum of ten (10) working days prior to closing that route in order to establish an alternate crossing route.
4. It shall be the Contractor's responsibility to install any necessary pavement, road rock, pavement markings and signage and/or any pedestrian signalization and/or signal modification to accommodate an existing or alternate walk route throughout the entire length of the project.
5. It shall be the Contractor's responsibility to provide State Certified School Crossing Guards or Off Duty Police Officers to cross students at all locations other than those previously designated. The Contractor may use Flagmen, but ONLY if they are State Certified as a School Crossing Guard.
6. Thirty (30) days prior to the beginning of construction the Contractor shall notify the Special Projects Coordinator at Broward County Traffic Engineering Division, (954) 847-2600 or at 2300 West Commercial Blvd., Fort Lauderdale, FL 33309 to discuss all necessary safety measures.
7. It shall be the Contractor's responsibility to notify the following Broward County School Board Pupil Transportation Department personnel if construction will impact any bus routes:
- Ruth Masters Routing (754) 321-4400 Ext. # 2308
- Vincent Harrell Student Transportation & Fleet Service (754) 321-4472
- Mary Tochtermann Student Transportation & Fleet Service (754) 321-4400 Ext. # 2006

Upon coordination with the aforementioned personnel, and if deemed necessary, a pre-construction meeting will be held to determine all bus routes and to make any necessary arrangements for rerouting. The Special Projects Coordinator from the Broward County Traffic Engineering Division, (954) 847-2600, will be notified and may attend the pre-construction meeting.

- 8. The Contractor shall be responsible for obtaining an approved Maintenance of Traffic Plan (MOT), specifying the above school/pedestrian conditions, through the Broward County Traffic Engineering Division or the Local Municipality, depending on the roadway jurisdiction. The conditions outlined in the MOT are fully effective as part of the proposed improvements. The Contractor shall be responsible for ensuring that all work associated with the project is in compliance with all the requirements of the approved MOT.
9. The Contractor shall ensure that there are HO speed limit signs installed within the designated reduced speed school zone at any time throughout the project.

Revised: 02/14

Broward County Traffic Engineering Division Communications Notes

To be placed within plan set (Revised: 10/13/2015)

"Communications Notes"

The agency responsible for maintenance of the traffic signals and related equipment is Broward County Traffic Engineering Division (BCTED). All system communications equipment, cabling and related material shall comply with Broward County's latest edition of the minimum standards as expressed in the "Standards and Specifications - Communication Infrastructure" document. Please refer to (BCTED)'s Communications Policies and Procedures for additional information. Broward County Traffic Engineering Division will not accept any projects that do not meet these standards and specifications. If fiber optic pull boxes already exist at an intersection, no additional fiber optic pull boxes will need to be installed. For a copy of these standards refer to the Broward County web site at www.BROWARD.COUNTY.FL.GOV/TRAFFIC under publications.

If there are Copper Interconnect Cable/s within your project limits or within 1500 feet of your project limits, contact the Communications Manager at telecomunications@broward.org or 954-847-2745.

If there are Fiber Optic Cable/s within your project limits or within 1500 feet of your project limits contact the Communications Manager at telecomunications@broward.org or 954-847-2745.

If there are cellular communications within your project limits, contact the Communications Manager at telecomunications@broward.org or 954-847-2745

All BCTED communications cables/conduit shall be located a minimum of 48 hours in advance.

Broward County Traffic Engineering Division Procedure for Notification of Communication Disruption

When communications to an intersection must be disrupted by a Contractor to perform work, the Contractor shall provide two day advance notice in writing to the Broward County Traffic Engineering Division. This notification shall be conveyed via electronic mail (email) to the Traffic Signal Technician III at telecomunications@broward.org. Notification shall include contact person, telephone number, purpose, location and duration. The disruption shall last for no more than 3 consecutive business days. Where possible, the disruption shall be during off peak hours beginning at 9:00am and ending at 3:00pm.

Fiber Optic Cables Notification Contact Person: When communications to an intersection must be disrupted by a Contractor to perform work, the Contractor shall provide two day advance notice in writing to the Broward County Traffic Engineering Division. This notification shall be conveyed via electronic mail (email) to the Communications Manager at telecomunications@broward.org. Notification shall include contact person, telephone number, purpose, location and duration. The disruption shall last for no more than 3 consecutive business days. Where possible, the disruption shall be during off peak hours beginning at 9:00am and ending at 3:00pm.

Include the following in any notice of utility ownership or within a "Utility Owners/Contact Person" table: Interconnect Communications Cables - (Robert Blount) Broward County Traffic Engineering Division (BCTED) 954-847-2745

FLORIDA DEPARTMENT OF TRANSPORTATION - DISTRICT FOUR

Broward County notes for safe routes to schools.

MAINTENANCE OF TRAFFIC - SCHOOL

The following areas within the project limits are designated as Safe Routes to School by the Broward County School Board (Areas to be provided by BCTED)

Within these areas the contractor's attention is directed to the following requirements:

- 1. Provide at least one safe, walkable path throughout the construction zone. If the existing walking surface cannot be maintained, then a temporary path, a minimum of 4 foot wide, shall be provided. The safe walk route shall also be separated from the construction activity during the entire length of the project encompassing the entire walk route with proper pedestrian openings at designated crossings in compliance with FDOT Design Standards Index No. 600 as well as meeting all ADA requirements. The contractor shall also install or modify any additional pavement markings, signage or pedestrian signals as needed in conjunction with the temporary path.
2. On days that school is in session, the contractor's work schedule within the school zone may be reduced based on actual activities in the school zone. See Maintenance of Traffic plans for details on the work zone restrictions, if warranted. Any changes in the Maintenance of Traffic schedules within school zones should be discussed with the Special Projects Coordinator at Broward County Traffic Engineering, (954) 847-2600.
3. All work required at designated school crossings and pedestrian crossings shall be restored to a safe walkable path during arrival and dismissal times.
4. Thirty (30) days prior to the beginning of construction, the Contractor SHALL notify the Special Projects Coordinator at Broward County Traffic Engineering Division, (954) 847-2600, to discuss all necessary safety measures.
5. It SHALL be the Contractor's responsibility to notify the following Broward County School Board Pupil Transportation Department personnel if construction will impact any bus routes:

- Ruth Masters Routing (754) 321-4400 Ext. # 2308
- ruth.masters@browardschools.com
- Vincent Harrell Student Transportation & Fleet Service (754) 321-4472
- vincent.harrell@browardschools.com
- Mary Tochtermann Student Transportation & Fleet Service (754) 321-4400 Ext. # 2006
- mary.tochtermann@browardschools.com

Upon coordination with the aforementioned personnel, and if deemed necessary, a pre-construction meeting will be held to determine all bus routes and to make any necessary arrangements for rerouting. The Special Projects Coordinator from the Broward County Traffic Engineering Division, (954) 847-2600, will be notified and may attend the pre-construction meeting.

Note to PMs and Plan Reviewers: Consider the work scope in using the notes. If the work will require a shutdown of an existing designated school crossing during the hours of use by the school, a note requiring the contractor to have an off-duty officer to cross students at alternate location is needed. This should be discussed with the Special Projects Coordinator at Broward County Traffic Engineering Division during design. Coordination with the school will be required during the construction of the project.

FDOT - DIST 4 - 9.25.14

SCHOOL ZONE INSTALLATION REQUIREMENTS

WITHIN BROWARD COUNTY

- 1. The Contractor shall be governed by the latest editions of the following manuals:
a) The FDOT Design Standards
b) The FDOT Standard Specifications for Road and Bridge Construction
c) The Broward County Minimum Standards Applicable to Public Rights-of-Way

- 2. For the latest edition of school flasher detail sheets and Maintenance of Traffic School/Pedestrians Notes, see the Broward County Traffic Engineering Division's web site at http://www.broward.org/Traffic/About/Press/Publications.aspx
3. The "Maintenance of Traffic School/Pedestrian" notes shall appear on the plan as indicated. Depending on the jurisdiction of the roadway the contractor will utilize either the FDOT or FDOT version, which will be determined by the School Traffic Safety Coordinator at BCTED.

- 4. School flasher plans are valid for eighteen (18) months from date of approval. After that time, plans shall be resubmitted for approval.

- 5. No school flasher and/or associated equipment shall be placed outside the public right-of-way or on private property without the prior acquisition of the necessary traffic engineering assessments by the consultant/contractor. These assessments will be large enough to allow access to the traffic engineering equipment by technicians and by law enforcement, which may require access to the equipment. The size and location of the assessments will be determined on a case-by-case basis. The assessments shall be recorded documents and a copy of the fully executed recorded assessment shall be provided to the School Traffic Safety Coordinator prior to installation.

- 6. Prior to any equipment order, the Contractor shall submit to the School Traffic Safety Coordinator at BCTED for approval, all of the equipment specifications (i.e. shop drawings) for all materials proposed for the project. Section 611.02 of the FDOT Standard Specifications for Road and Bridge Construction shall be submitted with the submittals. Included in the submittal shall be shop drawings for ground mount and/or mast arm details, as applicable.

If electrical service is required, the Contractor shall make written request to BCTED, Systems Section - Design Services, to provide billing authorization to FPL. This is required before electrical service can be ordered. The request shall include a statement certifying that this electrical installation meets or exceeds all applicable requirements of all applicable codes and is now ready for connection to FPL facilities. Also include the date service is required by in the request.

- 8. The Contractor shall make written request to the School Traffic Safety Coordinator at BCTED either by fax; 954-847-2700 or e-mail; TRAFFIC@broward.org to schedule an inspection of the complete installation, including the interim signing and pavement marking plan. Activation of the flashers shall only be permitted after said inspection.

- 9. The Contractor shall provide four (four) sets of marked up (as-built) construction plans to the engineer and BCTED as defined in FDOT Standard Specifications for Road and Bridge Construction Section 611, seven (7) days prior to school flasher conditional acceptance inspection by BCTED. The Contractor shall also provide two sets of as-built plans to BCTED signal technician at the time of inspection. Two copies of cabinet prints, two sets of cabinet keys and pager/time switch operation manuals for each location shall also be turned over at this time.

- 10. The Contractor is advised that the presence of overhead electrical conductors in close proximity to the locations of proposed school flashers may limit the type of equipment that can be used in construction of the school flasher. The contractor shall coordinate with FPL to deactivate lines if necessary.

- 11. All signalization cabinets shown or noted on the plan sheets for removal shall be delivered to the BCTED Operations Building, 2300 West Commercial Blvd., Fort Lauderdale. Existing flashers are not to be removed until after the new unit has passed its final inspection.

- 12. Sign locations may be varied in the field as necessary in order to avoid conflicts with unforeseen obstacles, driveways, etc. Any sign location variations shall be approved by the engineer of record and shown on the as built.

Revisions: April 24, 2012; November 1, 2012; March 21, 2013; August 18, 2015, June 7, 2017

THOMAS ENGINEERS - PROJECT MANAGERS - LAND PLANNING - LANDSCAPE ARCHITECTS
1100 W. KENNEDY BLVD. SUITE 200 FORT LAUDERDALE, FL 33304
P: 954-202-7000 F: 954-202-7000

Table with 4 columns: REV. NO., DATE, COMMENT, BY. Contains revision history for the document.

811 KNOW WHAT'S BELOW ALWAYS CALL 811 BEFORE YOU DIG
www.callsunshine.com

100% PLANS SUBMITTAL

PROJECT No: F150057
DRAWN BY: JFV
CHECKED BY: JFV
DATE: 09/11/2019
CAD ID: F150057-BROWARD COUNTY

CUMBERLAND FARMS SUNRISE BLVD. & NE 4TH AVENUE

FOR CUMBERLAND FARMS

THOMAS ENGINEERS logo and address: 8300 NW 31ST AVENUE, FORT LAUDERDALE, FL 33309

MICHAEL A. TROXELL
PROFESSIONAL ENGINEER
September 11, 2019
FLORIDA LICENSE No. 50572
FLORIDA BUSINESS CERT. OF AUTH. No. 27528

BROWARD COUNTY NOTES

SHEET NUMBER: CFG16.1

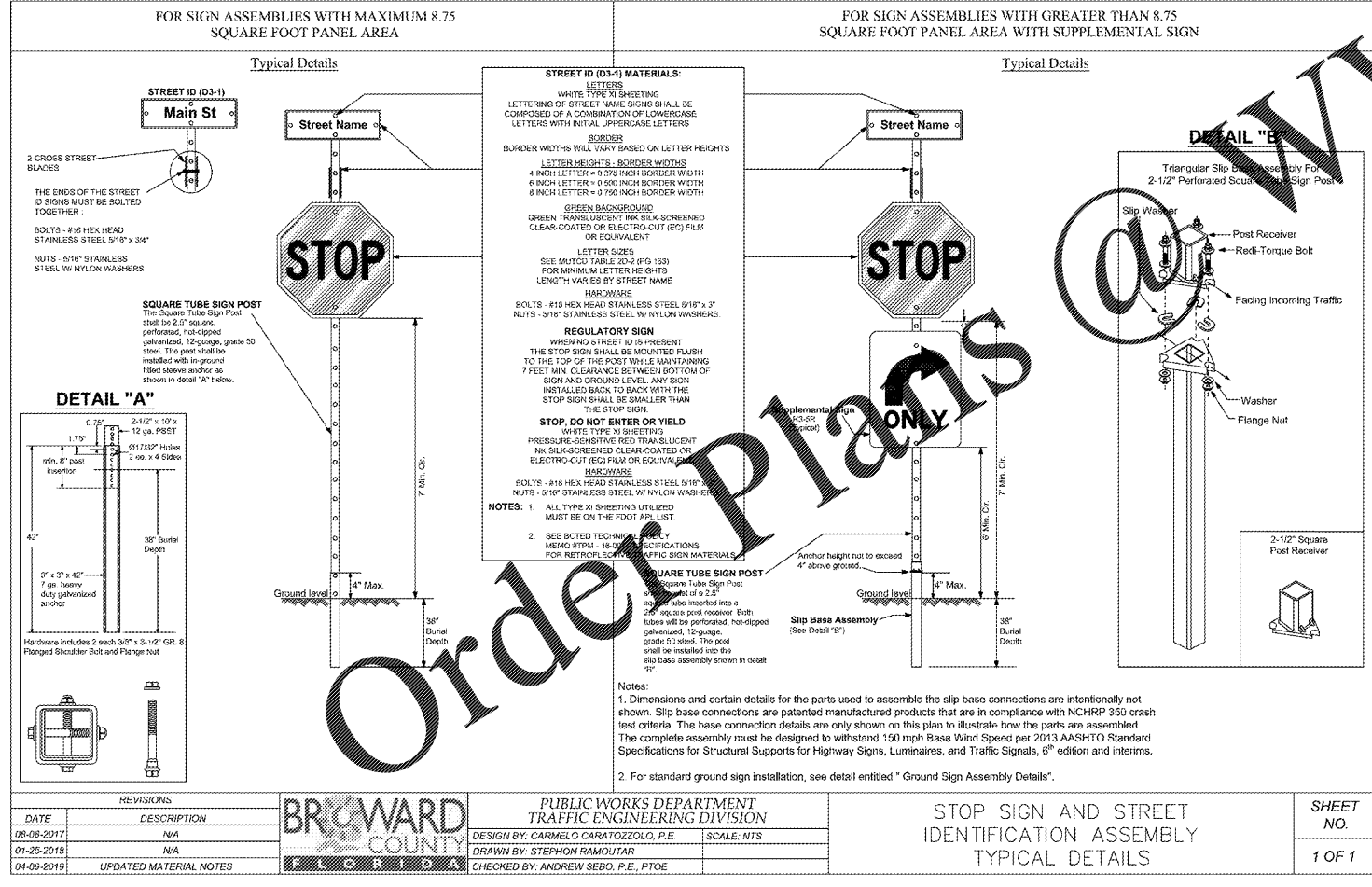


Table with 2 columns: DATE, DESCRIPTION. Contains revision history for the drawing.

BROWARD COUNTY PUBLIC WORKS DEPARTMENT TRAFFIC ENGINEERING DIVISION
DESIGN BY: CARMELO CARATZZOLO, P.E. SCALE: NTS
DRAWN BY: STEPHEN RAMOUTAR
CHECKED BY: ANDREW SEDO, P.E., PTOE
STOP SIGN AND STREET IDENTIFICATION ASSEMBLY TYPICAL DETAILS
SHEET NO. 1 OF 1