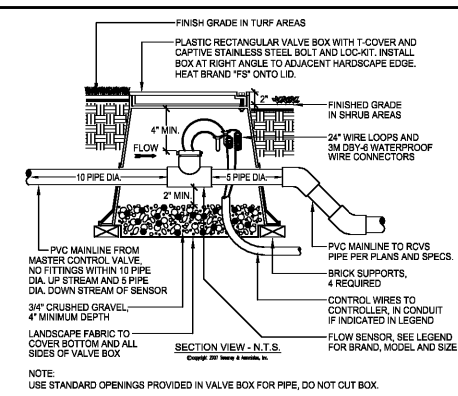
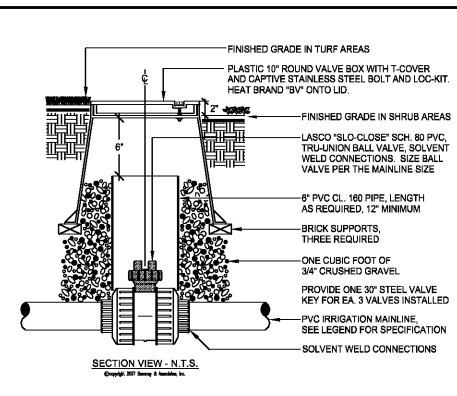


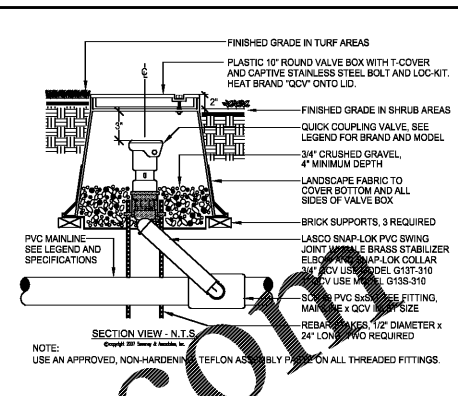
A POP-UP SPRINKLER



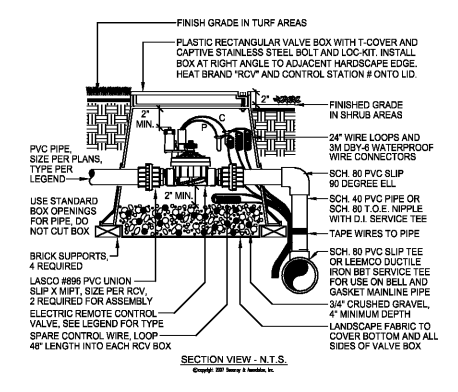
C FLOW SENSOR



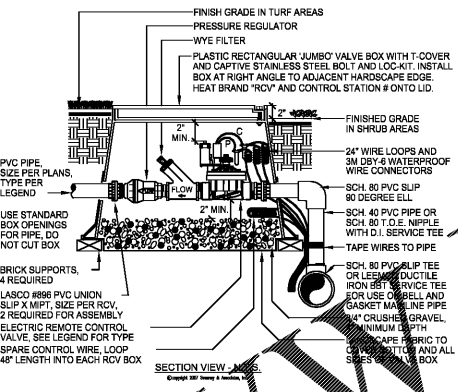
D BALL VALVE



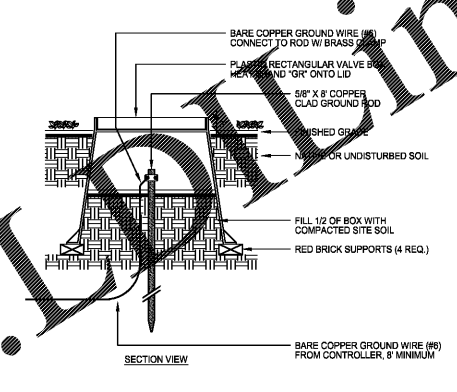
E QUICK COUPLER VALVE



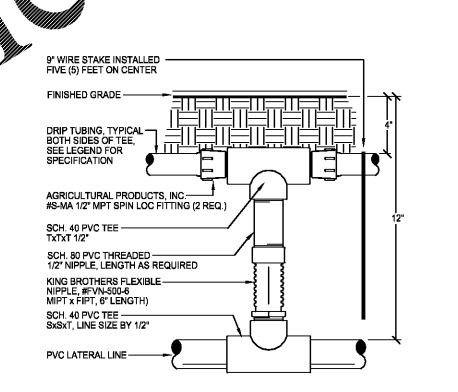
F REMOTE CONTROL VALVE



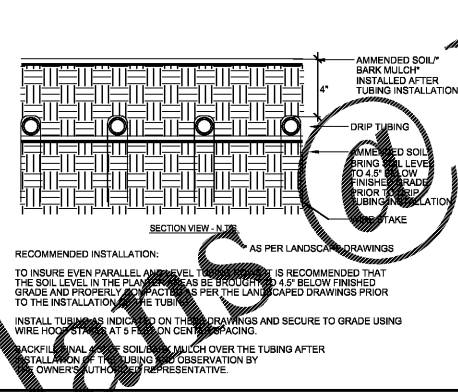
G DRIP RCV ASSEMBLY



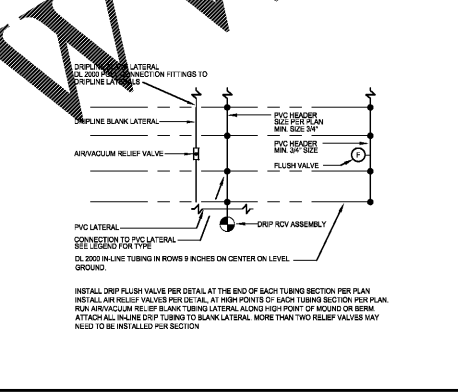
I GROUND ROD INSTALLTION



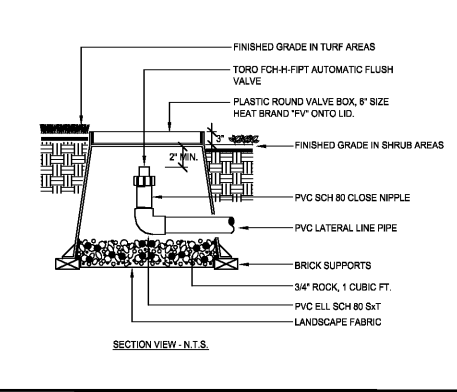
J DRIPLINE TUBING



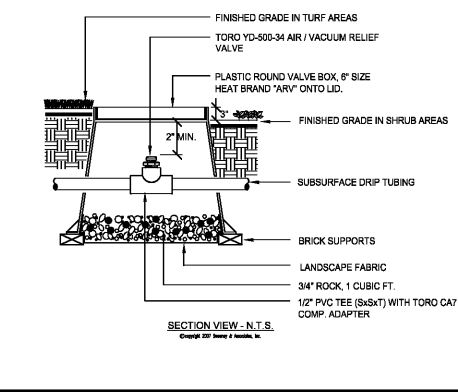
K DRIPLINE CONNECTION (SECTION)



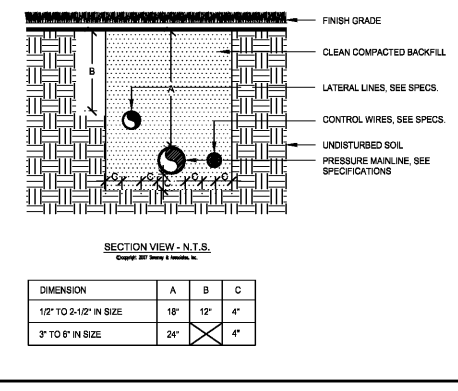
L DRIPLINE CONNECTION (PLAN)



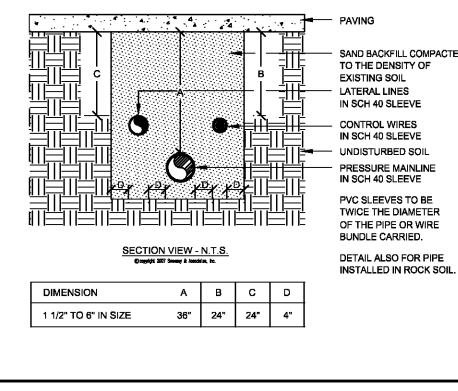
M DRIP FLUSH VALVE



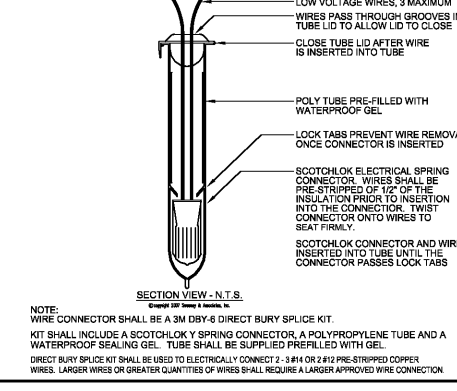
N DRIP AIR RELIEF VALVE



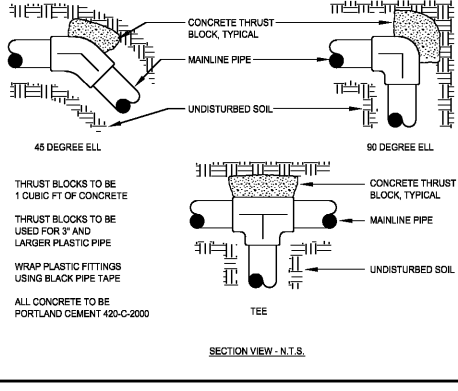
O PIPE INSTALLATION



P SLEEVE INSTALLATION



Q WIRE CONNECTION



R THRUST BLOCKING

Order Plans

Printed on Wednesday, September 11, 2019, 4:31 PM by Max Wilson. C:\PROJECTS\2019\CUMBERLAND FARMS\LANDSCAPE\IRRI\IRRI-DWG-01.dwg - USER: F:\ADMIN\ANDREW\PROJECTS\2019\CUMBERLAND FARMS\LANDSCAPE\IRRI\IRRI-DWG-01.dwg - PLOT: K:\WORK\REGISTRATION\2019\...

THOMAS

ENGINEERS - PROJECT MANAGERS - LAND PLANNING - LANDSCAPE ARCHITECTS

1000 CORPORATE DRIVE, SUITE 600, FORT LAUDERDALE, FL 33334
 1000 CORPORATE DRIVE, SUITE 600, FORT LAUDERDALE, FL 33334
 PHONE: (954) 202-7000 FAX: (954) 202-7070
 WWW.THOMASENGINEERINGGROUP.COM

REVISIONS:

REV.	DATE	COMMENT	BY
1	03/07/18	ISSUED 75% RESUBMITTAL	MDG
2	09/25/18	ISSUED 75% RESUBMITTAL	MDG
3	11/06/18	RESPONSE TO 75% COMMENTS	MAT
4	01/04/19	ADDRESS TRAFFIC ENG. CONDITIONS	MAT

811

KNOW WHAT'S BELOW ALWAYS CALL 811 BEFORE YOU DIG
 It's fast. It's free. It's the law.
 www.callsunshine.com

100% PLANS SUBMITTAL

PROJECT No:	F150057
DRAWN BY:	JFV
CHECKED BY:	MAT
DATE:	09/11/2019
CAD I.D.:	F150057-IRRIGATION PLAN

CUMBERLAND FARMS
 SUNRISE BLVD. &
 NE 4TH AVENUE

FOR
CUMBERLAND FARMS

THOMAS

ENGINEERS - PROJECT MANAGERS - LAND PLANNING - LANDSCAPE ARCHITECTS

1000 CORPORATE DRIVE, SUITE 250, FORT LAUDERDALE, FL 33334
 PHONE: (954) 202-7000 FAX: (954) 202-7070
 WWW.THOMASENGINEERINGGROUP.COM

MICHAEL D. GROSSWIRTH

REGISTERED LANDSCAPE ARCHITECT
 September 11, 2019
 FLORIDA LICENSE NO. 199571
 FLORIDA BUSINESS REGISTRATION NO. 27528

IRRIGATION DETAILS

CFG08.7