

ALL INVASIVE EXOTIC PLANT MATERIALS SHALL BE REMOVED & ERADICATED FROM THE SITE

ALL TREES SCHEDULED TO BE REMOVED OR THAT HAVE BEEN PREVIOUSLY REMOVED & HAVE REMAINING STUMPS, SHALL BE CUT DOWN, STUMP GROUND & SHALL HAVE ALL ROOTS REMOVED

ALL TRIMMING UNDERTAKEN ON A TREE PROTECTED BY THE PROVISIONS OF THE LAND DEVELOPMENT CODE SHALL BE PRUNED IN ACCORDANCE WITH THE AMERICAN NATIONAL STANDARDS INSTITUTE (ANSI) A 300 PRUNING STANDARDS

ALL TREES TO REMAIN MUST BE PROTECTED BY TREE PROTECTION BARRICADES MEETING THE MINIMUM STANDARDS. PROTECTIVE BARRICADES SHALL REMAIN IN PLACE UNTIL LAND ALTERATION AND CONSTRUCTION ACTIVITIES ARE COMPLETED.

ALL EXISTING CANOPY TREES TO REMAIN SHALL BE STRUCTURALLY PRUNED BY AN ISA CERTIFIED ARBORIST.

UNLESS OTHERWISE NOTED, ALL HEDGES, SHRUBS, ACCENTS AND GROUND COVERS WITHIN THE PROJECT LIMITS SHALL BE REMOVED.

PLEASE SEE SHEET CFG08.2 FOR TREE DISPOSITION CHART, NOTES AND TREE PROTECTION BARRICADE DETAIL.

- NOTES
1. CONTRACTOR IS RESPONSIBLE FOR FIELD VERIFYING ALL EXISTING SITE IMPROVEMENTS AND UTILITIES. ALL DISCREPANCIES SHALL BE IDENTIFIED TO THE ENGINEER IN WRITING.
  2. ALL EXISTING UTILITIES SHALL BE REMOVED BY CONTRACTOR IN ACCORDANCE WITH CITY AND LOCAL UTILITY COMPANY REQUIREMENTS. ALL DEMOLITION DEBRIS TO BE REMOVED BY CONTRACTOR IN ACCORDANCE WITH ALL APPLICABLE REGULATIONS.
  3. ALL HYDRANTS SHALL FALL WITHIN 4' OF THE CURB.
  4. MINIMUM 7.5' CLEARANCE AROUND THE HYDRANT CIRCUMFERENCE. THE 4 1/2" CAP SHALL FACE THE ROADWAY.
  5. ALL FIRE HYDRANTS SHOULD HAVE BLUE REFLECTIVE MARKERS.
  6. WATER SHALL BE ON SITE BEFORE CONSTRUCTION BEGINS.
  7. CLEAN OUTS INSTALLED IN ASPHALT MUST BE INSTALLED IN A CITY BOX MARKED SEWER.

**THOMAS**  
 CIVIL ENGINEERS - PROJECT MANAGERS - LAND PLANNING - LANDSCAPE ARCHITECTS  
 1000 CORPORATE DR. SUITE 600 FORT LAUDERDALE, FL 33334  
 PH: (954) 202-7000 FX: (954) 202-7070  
 P: 813-579-4100 P: 954-202-7000

REV.	DATE	COMMENT	BY
1	03/07/18	ISSUED 75% RESUBMITTAL	MDG
2	09/25/18	ISSUED 75% RESUBMITTAL	MDG
3	11/06/18	RESPONSE TO 75% COMMENTS	MAT
4	01/04/19	ADDRESS TRAFFIC ENG. CONDITIONS	MAT

**811** KNOW WHAT'S BELOW ALWAYS CALL 811 BEFORE YOU DIG  
 It's fast. It's free. It's the law.  
 www.callsunshine.com

100% PLANS SUBMITTAL

PROJECT No: F150057  
 DRAWN BY: JVF  
 CHECKED BY: MAT  
 DATE: 09/11/2019  
 CAD ID: F150057-TREE DISPOSITION PLAN

PROJECT:  
**CUMBERLAND FARMS  
 SUNRISE BLVD. &  
 NE 4TH AVENUE**

FOR  
**CUMBERLAND FARMS**

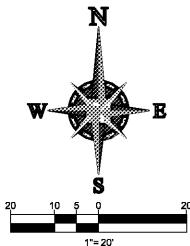
**THOMAS**  
 ENGINEERING GROUP

RADICE III  
 1000 CORPORATE DRIVE, SUITE 250  
 FORT LAUDERDALE, FL 33334  
 PH: (954) 202-7000  
 FX: (954) 202-7070  
 www.ThomasEngineeringGroup.com

**MICHAEL D. GROSSWIRTH**  
 LA 0666871  
 REGISTERED LANDSCAPE ARCHITECT  
 September 11, 2019  
 FLORIDA LICENSE NO. 0009571  
 FLORIDA BUSINESS REGISTRATION NO. 27528

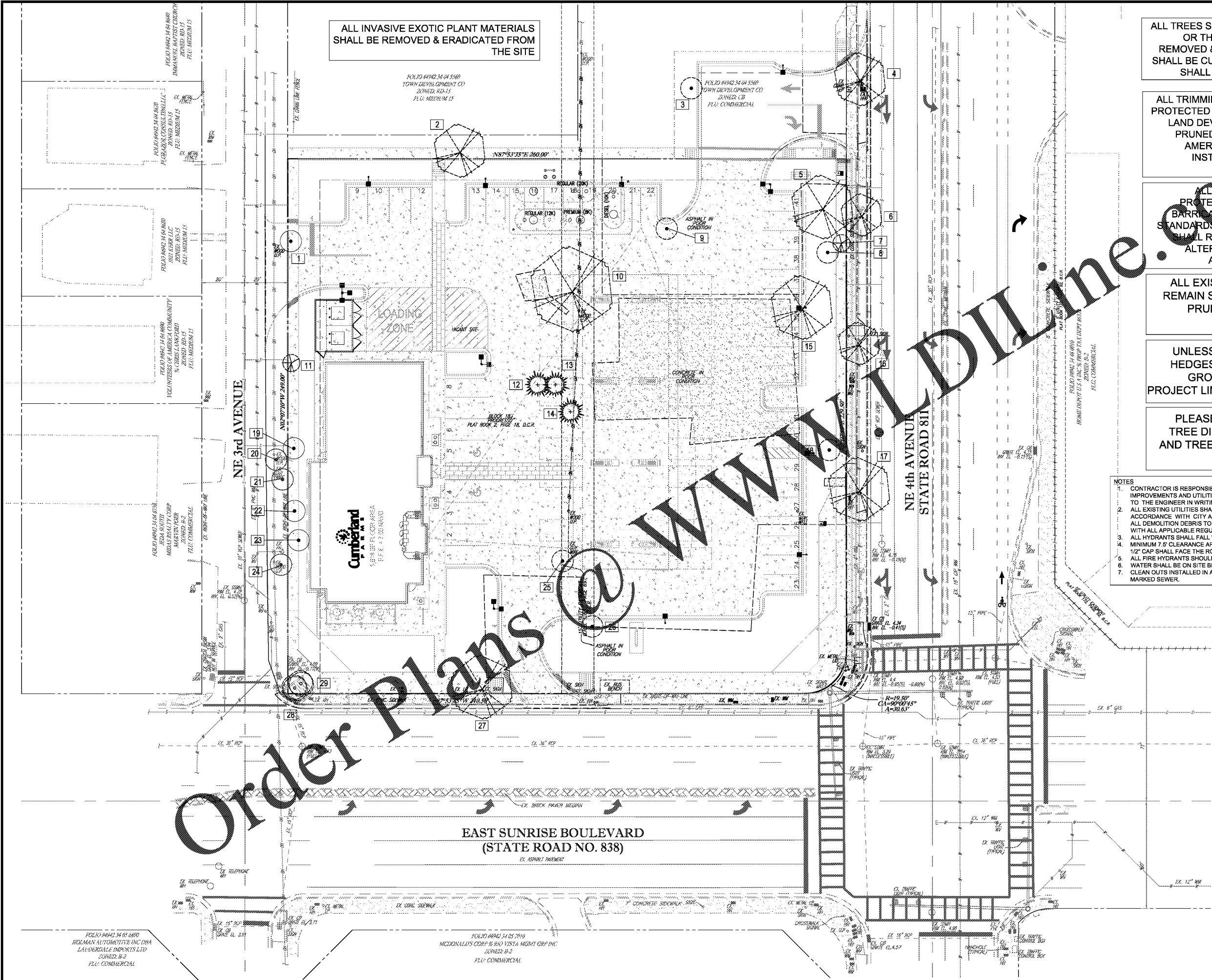
SHEET TITLE:  
**TREE DISPOSITION PLAN**

SHEET NUMBER:  
**CFG08.1**



Order Plans @ [www.dline.com](http://www.dline.com)

www.dline.com



Printed on Wednesday, September 11, 2019, 4:30 PM by Max McGinn  
 C:\PROJECTS\2019\CUMBERLAND FARMS\SUNRISE BLVD & NE 4TH AVENUE\DRAWINGS\CFG08.1-TREE DISPOSITION PLAN.dwg