

THOMAS
ENGINEERS - PROJECT MANAGERS - LAND PLANNING - LANDSCAPE ARCHITECTS

125 W. INDIANTOWN RD.
SUITE 206
FORT LAUDERDALE, FL 33309
P: 954-379-1100
F: 954-379-1100

REVISIONS:

REV.	DATE	COMMENT	BY
1	03/07/18	ISSUED 75% RESUBMITTAL	MAT
2	09/25/18	ISSUED 75% RESUBMITTAL	MAT
3	11/06/18	RESPONSE TO 75% COMMENTS	MAT
4	01/04/19	ADDRESS TRAFFIC ENG. CONDITIONS	MAT
6	10/09/19	REVISED SIGNS	MAT

811 KNOW WHAT'S BELOW ALWAYS CALL 811 BEFORE YOU DIG
It's fast. It's free. It's the law.
www.callsunshine.com

100% PLANS SUBMITTAL

PROJECT No: F150057
DRAWN BY: JFV
CHECKED BY: MAT
DATE: 09/11/2019
CAD ID: F150057-UTILITY PLAN

PROJECT:
**CUMBERLAND FARMS
SUNRISE BLVD. &
NE 4TH AVENUE**

FOR
CUMBERLAND FARMS

THOMAS
ENGINEERS GROUP

6300 NW 31ST AVENUE
FORT LAUDERDALE, FL 33309
PH: (954) 202-7000
FX: (954) 202-7070
www.ThomasEngineeringGroup.com

MICHAEL A. TROXELL

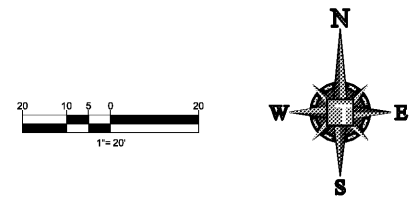
PROFESSIONAL ENGINEER
October 9, 2019
FLORIDA LICENSE No. 50572
FLORIDA BUSINESS CERT. OF AUTH. No. 27528

SHEET TITLE:

UTILITY PLAN

SHEET NUMBER:

CFG07.0



DATUM NOTE:
ALL ELEVATIONS SHOWN HEREON ARE IN FEET AND
ARE BASED ON THE NORTH AMERICAN VERTICAL
DATUM OF 1988 (NAVD). ADD 1.57 TO CONVERT TO
NATIONAL GEODETIC VERTICAL DATUM OF 1929
(GVD)

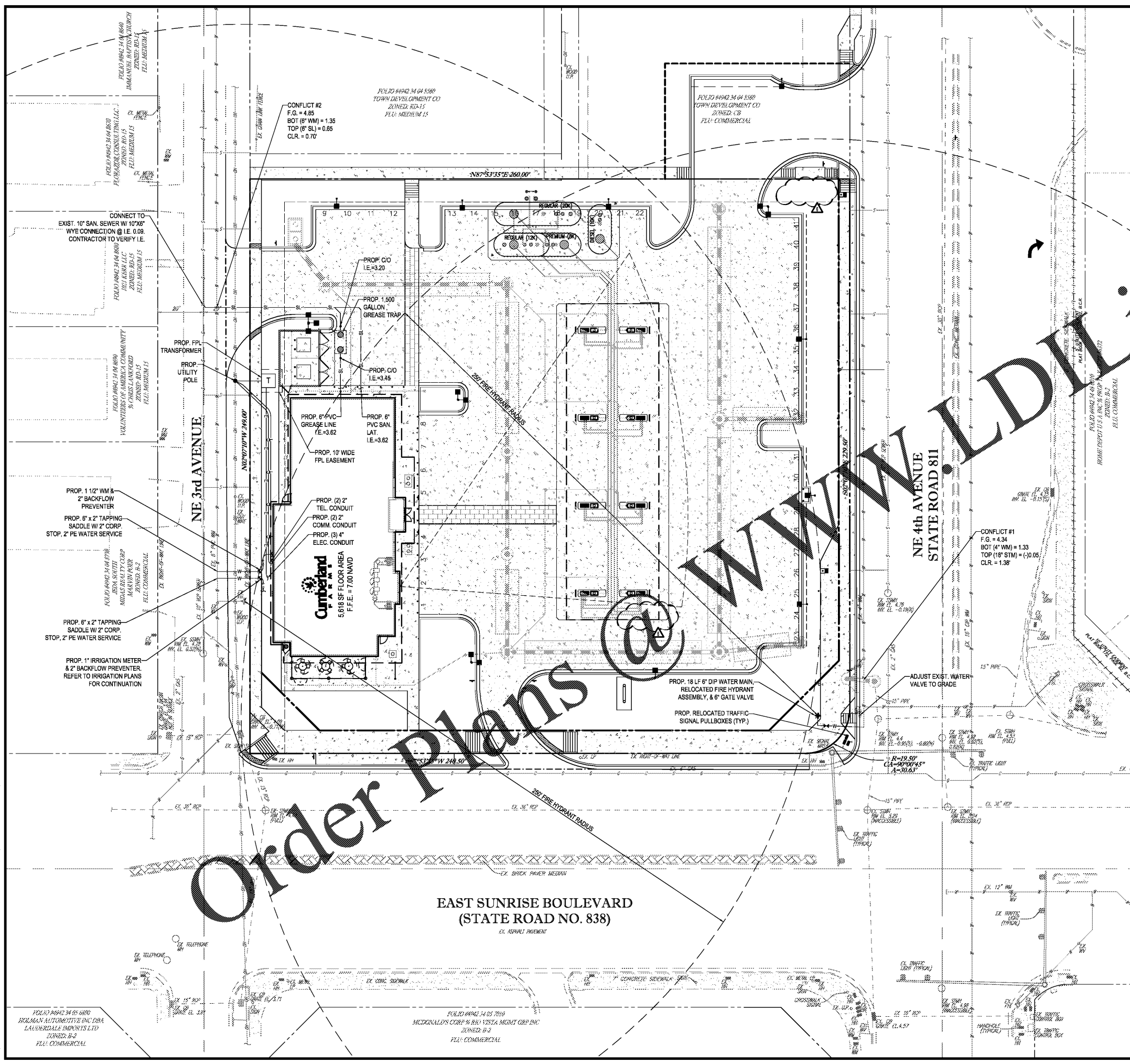
UTILITY LEGEND

EXISTING NOTE	TYPICAL NOTE TEXT	PROPOSED NOTE
	UNDERGROUND WATER LINE	
	UNDERGROUND ELECTRIC LINE	
	UNDERGROUND TELEPHONE LINE	
	STORM SEWER	
	SANITARY SEWER MAIN	
	OVERHEAD WIRE	
	OVERHEAD TRAFFIC WIRE	
	SANITARY SEWER LATERAL	
	SANITARY MANHOLE	
	STORM MANHOLE	
	CATCH BASIN	
	WATER METER	
	CLEAN OUT	
	LIGHT POLE	

- UTILITY CONSTRUCTION NOTES:
- PRIOR TO COMMENCING WORK WHICH REQUIRES CONNECTING PROPOSED FACILITIES TO EXISTING LINES OR APPURTENANCES, THE CONTRACTOR SHALL VERIFY THE LOCATION AND ELEVATION(S) OF EXISTING CONNECTION POINT(S) AND NOTIFY THE OWNER'S ENGINEER OF ANY CONFLICTS OR DISCREPANCIES.
 - ALL PIPING AND ASSOCIATED APPURTENANCES SHALL BE CONSTRUCTED IN ACCORDANCE WITH THE LATEST APPLICABLE STATE AND LOCAL REGULATIONS.
 - MINIMUM HORIZONTAL AND VERTICAL SEPARATION SHALL CONFORM TO THE LATEST FDEP RULES AND CITY OF FORT LAUDERDALE WATER AND SEWER DESIGN STANDARDS MANUAL.
 - WATER AND SEWER PIPES SHALL BE CONSTRUCTED WITH A MINIMUM 30" OF COVER IN UNPAVED AREAS AND MINIMUM OF 36" COVER IN PAVED AREAS UNLESS OTHERWISE APPROVED.
 - ALL UTILITY TRENCH BACKFILL SHALL BE COMPACTED TO A MINIMUM OF 98% MAXIMUM DENSITY PER AASHTO T160 UNLESS OTHERWISE APPROVED.
 - THE CONSTRUCTION OF ALL UTILITIES CONNECTING TO THE CITY OF FORT LAUDERDALE UTILITY SYSTEM SHALL BE IN CONFORMANCE WITH THE CITY OF FORT LAUDERDALE WATER AND SEWER DESIGN STANDARDS MANUAL.
 - THE CONTRACTOR SHALL NOTIFY THE CITY OF FORT LAUDERDALE PUBLIC UTILITIES CONSTRUCTION DEPARTMENT 48 HOURS PRIOR TO ANY UTILITIES CONSTRUCTION.
 - ALL EXISTING UTILITIES HAVE BEEN FIELD VERIFIED AT ALL POINTS OF CONNECTION TO, AND AT ALL AREAS OF CONFLICT WITH THE CITY OF FORT LAUDERDALE.
 - ALL UTILITIES LOCATED OUTSIDE PUBLIC RIGHT-OF-WAYS AND PUBLIC EASEMENTS SHALL BE PRIVATELY OWNED AND MAINTAINED.
 - ALL CONSTRUCTION SHALL BE IN ACCORDANCE WITH THE CITY OF FORT LAUDERDALE UTILITY DEPARTMENTS STANDARDS, AND WITH ALL APPLICABLE FLORIDA DEPARTMENT OF ENVIRONMENTAL PROTECTION RULES AND REGULATIONS.

- WATER MAIN NOTES:
- ALL WATER MAIN MATERIAL, INSTALLATION AND TESTING SHALL BE IN CONFORMANCE WITH CITY OF FORT LAUDERDALE STANDARDS, AWWA STANDARDS AND THE MANUFACTURER'S STANDARDS.
 - ALL ON-SITE WATER MAIN TO BE PRIVATE.
 - WATER METER TO BE PROVIDED BY CITY OF FORT LAUDERDALE.
 - ANY POLYETHYLENE JOINTS SHALL BE BUTT-FUSED, DONE WITH POLYETHYLENE FITTINGS OR BRASS COMPRESSION FITTINGS.
 - ANY REQUIRED PRESSURE AND LEAKAGE TESTS ARE TO BE PERFORMED IN ACCORDANCE WITH AWWA C600 AND C605 OR OTHER APPLICABLE STANDARDS.
 - PROPER WATER MAIN DISINFECTION IS IN ACCORDANCE WITH AWWA C651 AND CITY OF FORT LAUDERDALE STANDARDS.
 - WATER MAINS SHALL BE INSTALLED, TESTED, INSPECTED AND FULLY OPERATIONAL BEFORE ANY CERTIFICATE OF OCCUPANCY SHALL BE ISSUED.

- SANITARY SEWER NOTES:
- ALL SANITARY SEWER MATERIAL AND INSTALLATION SHALL BE IN CONFORMANCE WITH THE CITY OF FORT LAUDERDALE WATER AND SEWER STANDARDS, AS WELL AS THE MANUFACTURER'S STANDARDS.
 - ALL SANITARY GRAVITY SEWER PIPE SHALL BE POLYVINYL CHLORIDE (PVC) SDR-35 IN ACCORDANCE WITH ASTM D3034.
 - ALL ON-SITE SANITARY SEWER TO BE PRIVATE.
 - ALL PIPE CONSTRUCTION AND TESTING SHALL CONFORM TO THE APPROPRIATE AWWA STANDARDS.
 - ANY NECESSARY DEFLECTION, PRESSURE, AND LEAKAGE TESTS ARE TO BE PERFORMED IN ACCORDANCE WITH AWWA C600, AWWA C605 OR OTHER APPLICABLE STANDARDS.



Order Plans @ www.worldbuilding.com

**EAST SUNRISE BOULEVARD
(STATE ROAD NO. 838)**
EX. ASPHALT PAVEMENT

FOLIO #4942 34 05 5800
MCKMAN AUTOMOTIVE INC DBA
LAUDERDALE IMPORTS LTD
ZONED: B-2
FLU: COMMERCIAL

FOLIO #4942 34 05 7010
MCDONALD'S CORP % R/R VISTA MGMT GRP INC
ZONED: B-2
FLU: COMMERCIAL

www.worldbuilding.com