

**THOMAS**  
ENGINEERS - PROJECT MANAGERS - LAND PLANNING - LANDSCAPE ARCHITECTS

125 W. INDIANTOWN RD.  
SUITE 206  
FORT LAUDERDALE, FL 33309  
P: 954-202-7000  
F: 954-202-7000

REV.	DATE	COMMENT	BY
1	03/07/18	ISSUED 75% RESUBMITTAL	MAT
2	09/25/18	ISSUED 75% RESUBMITTAL	MAT
3	11/06/18	RESPONSE TO 75% COMMENTS	MAT
4	01/04/19	ADDRESS TRAFFIC ENG. CONDITIONS	MAT
6	10/09/19	REVISED SIGNS	MAT

**811** KNOW WHAT'S BELOW ALWAYS CALL 811 BEFORE YOU DIG  
It's fast. It's free. It's the law.  
www.callsunshine.com

100% PLANS SUBMITTAL

PROJECT No: F150057  
DRAWN BY: JFV  
CHECKED BY: MAT  
DATE: 09/11/2019  
CAD I.D.: F150057-EROSION CONTROL

PROJECT:  
**CUMBERLAND FARMS  
SUNRISE BLVD. &  
NE 4TH AVENUE**

FOR  
**CUMBERLAND FARMS**

**THOMAS**  
ENGINEERS GROUP

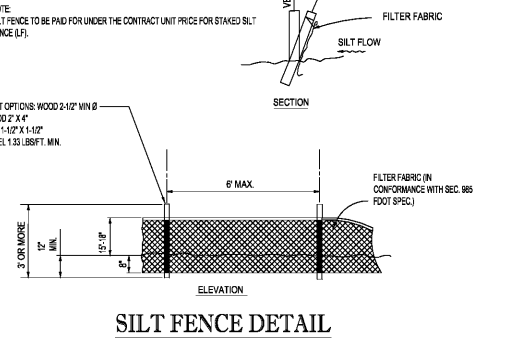
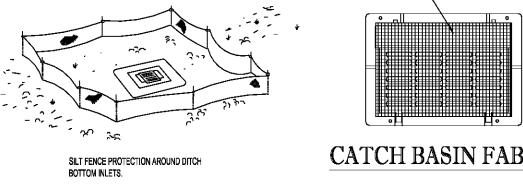
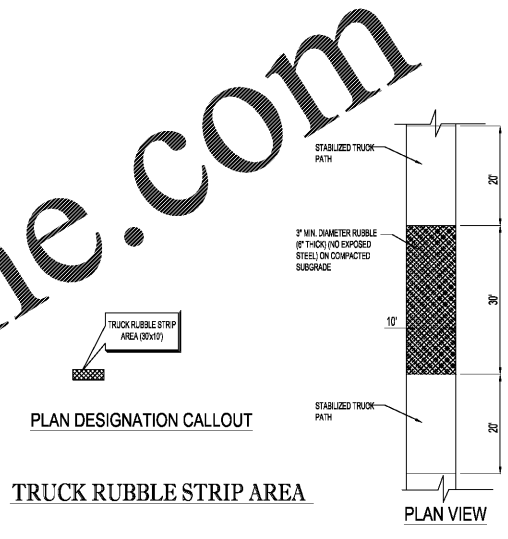
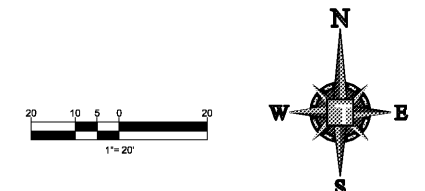
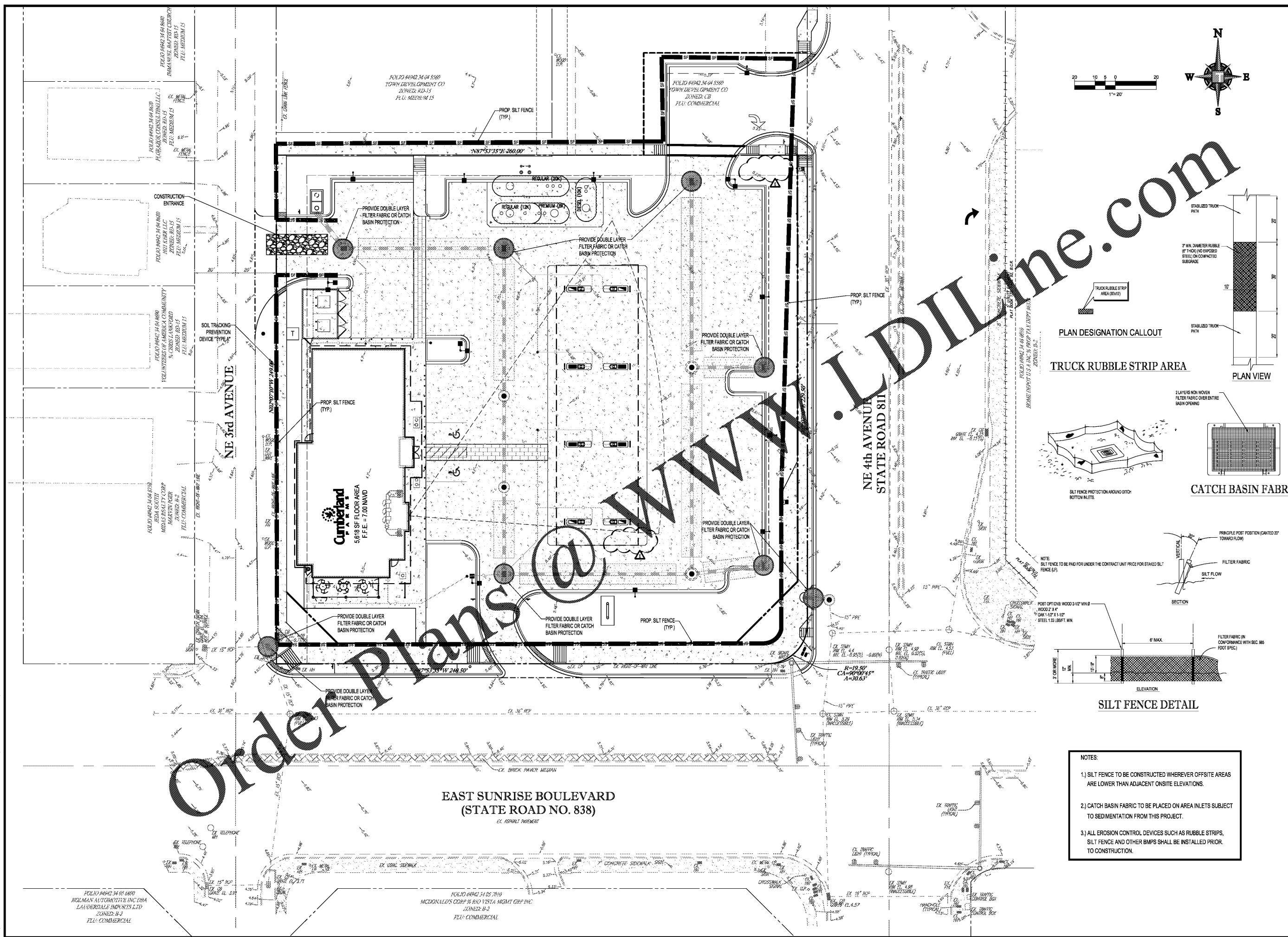
8300 NW 31ST AVENUE  
FORT LAUDERDALE, FL 33309  
PH: (954) 202-7000  
FX: (954) 202-7070  
www.ThomasEngineeringGroup.com

**MICHAEL A. TROXELL**

PROFESSIONAL ENGINEER  
October 9, 2019  
FLORIDA LICENSE No. 50572  
FLORIDA BUSINESS CERT. OF AUTH. No. 27528

SHEET TITLE:  
**EROSION &  
SEDIMENTATION  
CONTROL PLAN**

SHEET NUMBER:  
**CFG06.0**



- NOTES:
- 1.) SILT FENCE TO BE CONSTRUCTED WHEREVER OFFSITE AREAS ARE LOWER THAN ADJACENT ONSITE ELEVATIONS.
  - 2.) CATCH BASIN FABRIC TO BE PLACED ON AREA INLETS SUBJECT TO SEDIMENTATION FROM THIS PROJECT.
  - 3.) ALL EROSION CONTROL DEVICES SUCH AS RUBBLE STRIPS, SILT FENCE AND OTHER BMPs SHALL BE INSTALLED PRIOR TO CONSTRUCTION.

Order Plans @ [www.LDOnline.com](mailto:www.LDOnline.com)

Printed on Wednesday, October 09, 2019, 9:33 AM by Alex Kagan  
 C:\PROJECTS\2019\10\09\191008\20191008\20191008.dwg - 100% PLANS SUBMITTAL - EROSION CONTROL PLAN - 100% PLANS SUBMITTAL - EROSION CONTROL PLAN