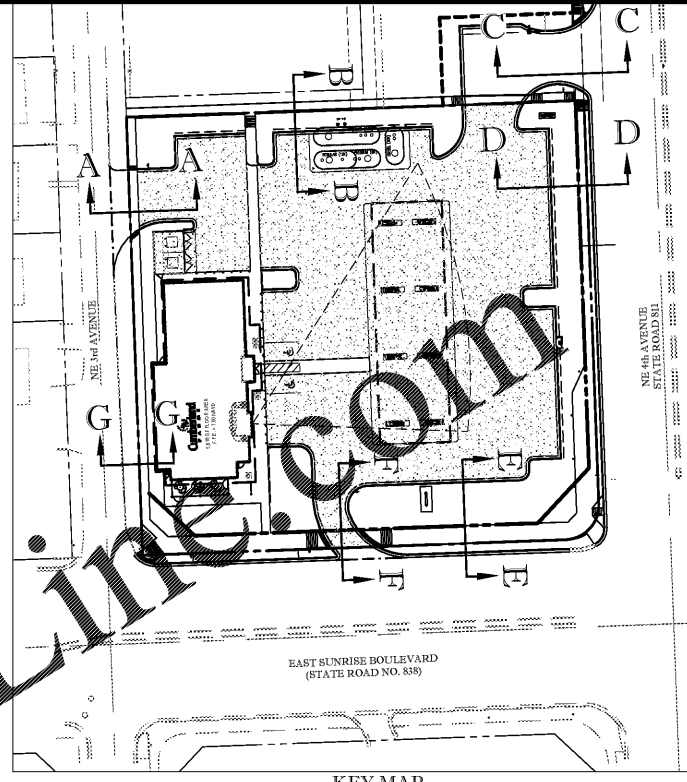


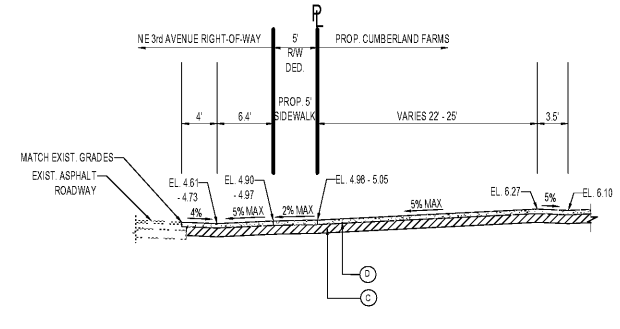
THOMAS
ENGINEERING GROUP

CIVIL ENGINEERS - PROJECT MANAGERS - LAND PLANNING - LANDSCAPE ARCHITECTS

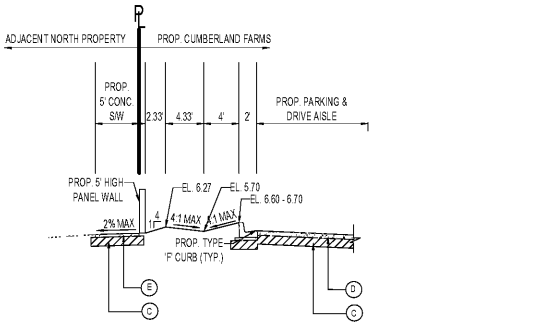
125 W. INDIANTOWN RD.
SUITE 209
FORT LAUDERDALE, FL 33309
P: 954-202-7000
F: 954-202-7070
www.ThomasEngineeringGroup.com



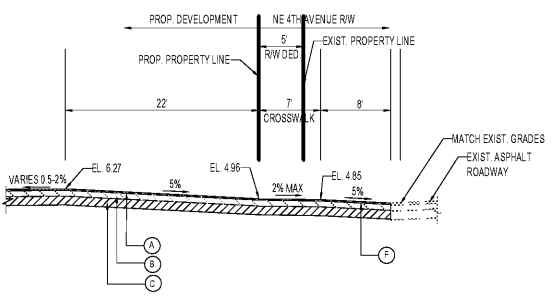
KEY MAP



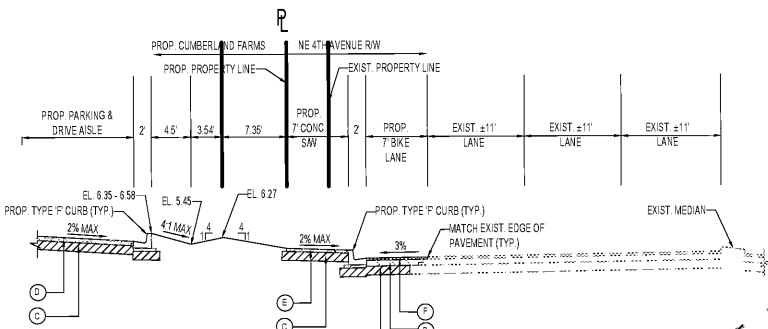
SECTION A-A
SCALE: 1" = 10'



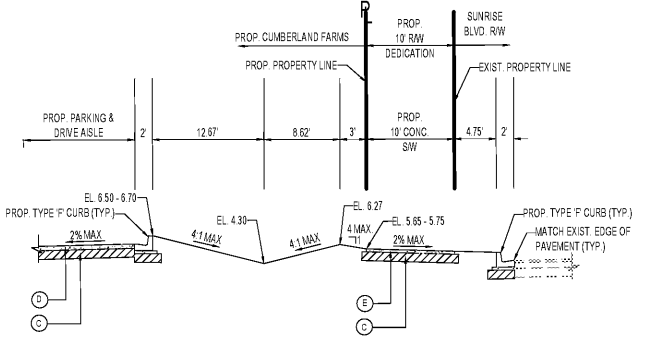
SECTION B-B
SCALE: 1" = 10'



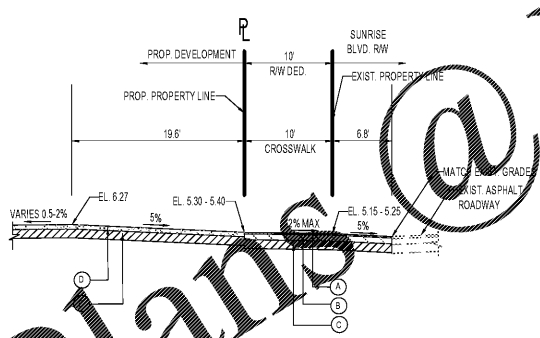
SECTION C-C
SCALE: 1" = 10'



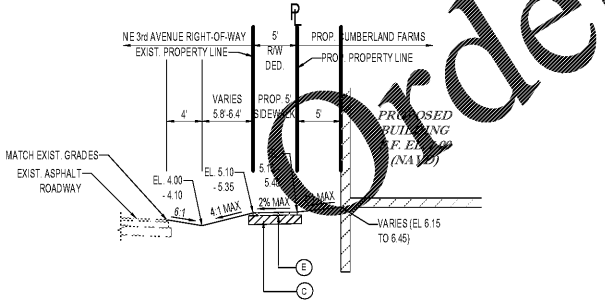
SECTION D-D
SCALE: 1" = 10'



SECTION E-E
SCALE: 1" = 10'



SECTION F-F
SCALE: 1" = 10'



SECTION G-G
SCALE: 1" = 10'

PAVEMENT LEGEND

- (A) WEARING SURFACE:
2.5" INCHES OF SP-9.5 FINE MIX ASPHALTIC CONCRETE (2-1.25" LIFTS) TRAFFIC LEVEL B. THE SECOND LIFT OF ASPHALT SHALL BE VIRGIN ASPHALT AND NOT BE PLACED UNTIL ALL OTHER WORK ON THE SITE HAS BEEN COMPLETED. UPON COMPLETION OF SECOND LIFT OF ASPHALT, ANY SCRATCHES, GOUGES, OR LOSS OF AGGREGATE WILL NOT BE ACCEPTED. CONTRACTOR TO REMEDY ALL HOLES, BLEWISHES, ETC. PRIOR TO THE UNIFORM INSTALLATION OF SECOND LIFT. AFTER SECOND LIFT OF ASPHALT IS INSTALLED, TRAFFIC ROLLING IS REQUIRED.
- (B) BASE:
8" LIMEROCK OR CRUSHED COQUINA BASE COMPACTED TO 98% MAX. MOD PROCTOR DRY DENSITY (ASTM D-1557/AASHTO T-180) MIN. LBR 100.
- (C) SUB-BASE:
12" TYPE B SUBGRADE COMPACTED @ 95% MAX. MOD PROCTOR DRY DENSITY (ASTM D-1557/AASHTO T-180) MIN. LBR 40.
- (D) CONCRETE PAVEMENT:
6" THICK 4500 P.S.I. CONCRETE @ 28 DAYS.
- (E) CONCRETE SIDEWALK:
4" THICK 3000 P.S.I. CONCRETE @ 28 DAYS EXCEPT IN DRIVEWAYS WHERE THICKNESS SHALL BE 6" AND 4,000 P.S.I.
- (F) WEARING SURFACE (NE 4TH AVENUE):
1" INCH OF TYPE FC-9.5 ASPHALTIC CONCRETE FRICTION COURSE ON TOP OF 2" TYPE SP SUPERPAVE ASPHALTIC CONCRETE (2-1" LIFTS) TRAFFIC LEVEL C. UPON COMPLETION OF SECOND LIFT OF ASPHALT, ANY SCRATCHES, GOUGES, OR LOSS OF AGGREGATE WILL NOT BE ACCEPTED. CONTRACTOR TO REMEDY ALL HOLES, BLEWISHES, ETC. PRIOR TO THE UNIFORM INSTALLATION OF SECOND LIFT. AFTER SECOND LIFT OF ASPHALT IS INSTALLED, TRAFFIC ROLLING IS REQUIRED. PAVEMENT TO BE INSTALLED PER FLORIDA DEPARTMENT OF TRANSPORTATION STANDARDS.

REVISIONS:

REV.	DATE	COMMENT	BY
1	03/07/18	ISSUED 75% RESUBMITTAL	MAT
2	09/25/18	ISSUED 75% RESUBMITTAL	MAT
3	11/06/18	RESPONSE TO 75% COMMENTS	MAT
4	01/04/19	ADDRESS TRAFFIC ENG. CONDITIONS	MAT

811 KNOW WHAT'S BELOW ALWAYS CALL 811 BEFORE YOU DIG
www.callsunshine.com

100% PLANS SUBMITTAL

PROJECT NO.:	F150067
DRAWN BY:	JFV
CHECKED BY:	MAT
DATE:	09/11/2019
CAD T.D.:	F150067-SECTIONS

PROJECT:
**CUMBERLAND FARMS
SUNRISE BLVD. &
NE 4TH AVENUE**

FOR:
CUMBERLAND FARMS

THOMAS
ENGINEERING GROUP

6300 NW 31ST AVENUE
FORT LAUDERDALE, FL 33309
PH: (954) 202-7000
FX: (954) 202-7070
www.ThomasEngineeringGroup.com

MICHAEL A. TROXELL

PROFESSIONAL ENGINEER
September 11, 2019
FLORIDA LICENSE No. 50572
FLORIDA BUSINESS CERT. OF AUTH. No. 27528

SHEET TITLE:
CROSS SECTIONS

SHEET NUMBER:
CFG05.4

Printed on Wednesday, September 11, 2019, 4:58 PM by Max Kishner
 C:\Users\maxk\OneDrive\Documents\Projects\190828060\CROSS SECTIONS\CFG05.4.dwg