



PRM MEDICAL OFFICE BUILDING

FLORIDA

NAPLES, FL

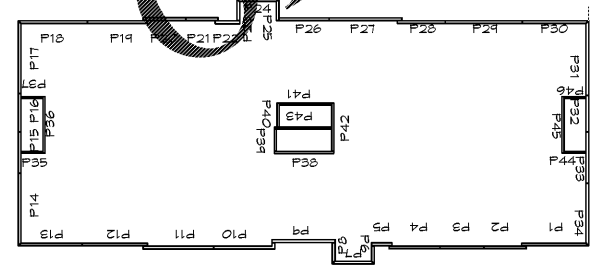
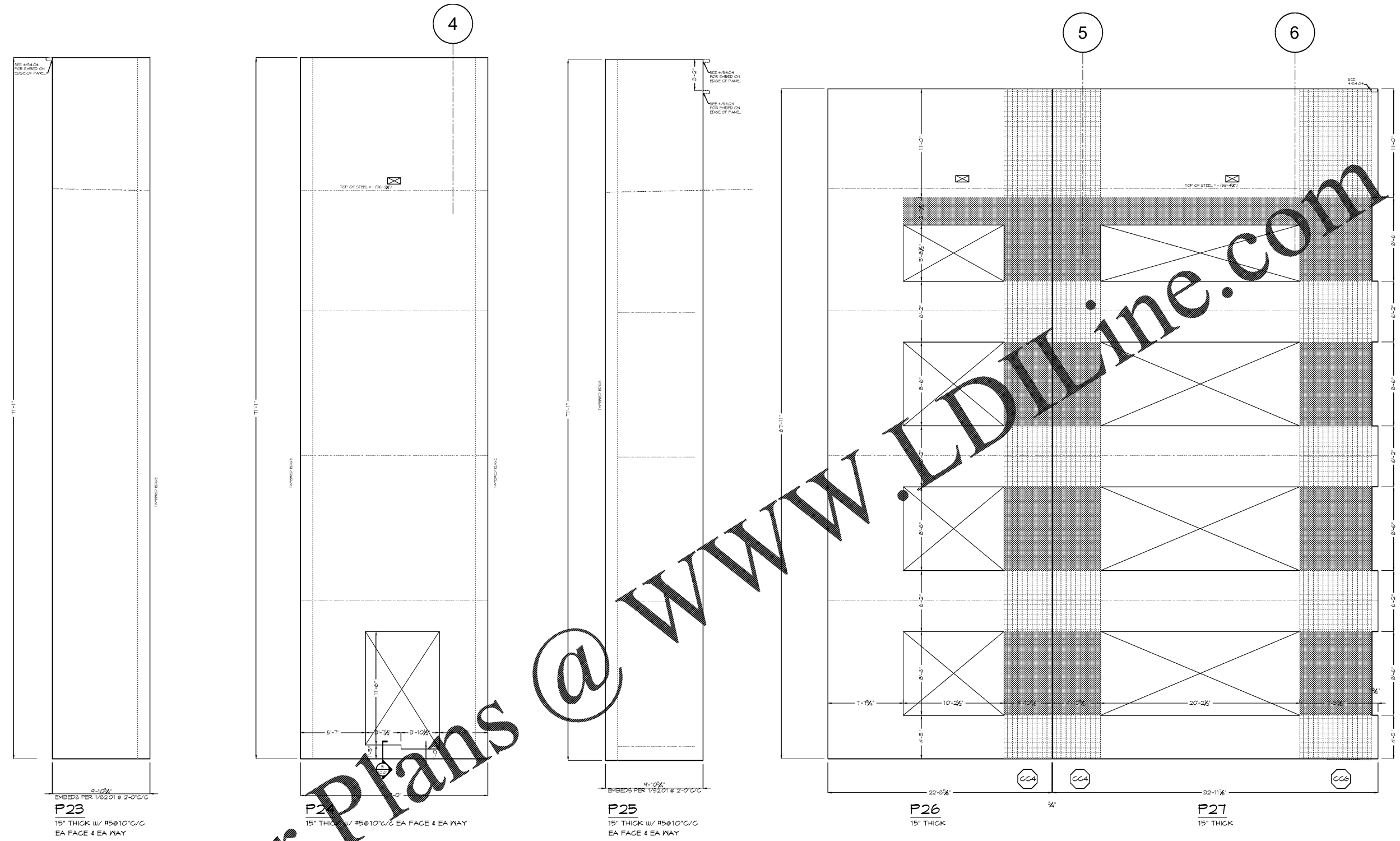
THIS DOCUMENT CONTAINS PROPRIETARY INFORMATION AND IS THE PROPERTY OF DAVIS STOKES COLLABORATIVE P.C. IT IS TO BE USED ONLY FOR THE PROJECT AND SITE SPECIFICALLY IDENTIFIED HEREIN. ANY REPRODUCTION OR DISSEMINATION OF THIS DOCUMENT TO OTHERS WITHOUT THE WRITTEN CONSENT OF DAVIS STOKES COLLABORATIVE P.C. IS STRICTLY PROHIBITED. COPYRIGHT © 2019. ALL RIGHTS RESERVED.

7121 CROSSROADS BLVD.
BRENTWOOD, TN 37027
TEL: (615) 726-0010
MAIL: dstcinfo@dstccol.com
WEB: www.dstccol.com

DAVIS STOKES COLLABORATIVE P.C.
DSC ARCHITECTS

REVISIONS	
NO.	DESCRIPTION

TILT WALL PANEL ELEVATIONS
55.05
ISSUE DATE: 11/12/19 JOB NUMBER: 19020



TILT-UP PANEL ELEVATIONS

- NOTES:
- SEE 91.00 FOR ADDITIONAL TILT-UP NOTES.
 - COORDINATE ALL DIMENSIONS WITH ARCHITECTURAL DRAWINGS.
 - PROVIDE 15' TILT-UP PANELS W/ #4@12" VERT EACH FACE & #4@12" HORIZ EACH FACE UNO, SEE ELEVATIONS. PROVIDE 17' TILT-UP PANELS W/ #4@12" VERT EACH FACE & #4@12" HORIZ EACH FACE UNO, SEE ELEVATIONS.
 - MAXIMUM REVEAL DEPTH ALLOWED SHALL BE 3/4".
 - STAGGER LAP SPICES WITHIN WALL PIERS.
 - CONTRACTOR TO COORDINATE ALL DOOR, WINDOW, & BLOCKOUT OPENING SIZES & LOCATIONS W/ ARCHITECTURAL DRAWINGS.
 - DO NOT CORE THRU WALL PANELS WITHOUT PRIOR WRITTEN APPROVAL OF STRUCTURAL ENGINEER. CONTRACTOR TO COORDINATE LOCATIONS OF ANY MECHANICAL, ELECTRICAL, & PLUMBING PENETRATIONS PRIOR TO THE SHOP DRAWING PROCESS.
 - ELEVATIONS DRAWN AS VIEWED FROM BUILDING INTERIOR UNO, SEE 91.01.
 - ⊗ - INDICATES TIED COLUMN MARK, SEE 1/56.01 FOR COLUMN SCHEDULE.
 - SEE TYPICAL TILT-UP PANEL LAYOUT ON 5/56.00 FOR REMAINDER OF INFORMATION.
 - PROVIDE PANEL-TO-PANEL CONNECTIONS AT CORNERS AND INTERSECTING PANELS, SEE 4/56.00 & 7/56.00 FOR REMAINDER OF INFORMATION.
 - SEE 9/56.00 FOR HOOKED HORIZONTAL REINFORCING AT PIERS LESS THAN 2'-0" WIDE.
 - SEE 2/52.01 AND 5/56.00 FOR HOOKED VERTICAL REINFORCING AT LGN FIRST FLOOR WINDOWS AND FIRST FLOOR DOORS.
 - COORDINATE LOCATION OF EMBEDS FOR FLOOR FRAMING MEMBERS AND ROOF FRAMING MEMBERS WITH FRAMING PLANS AND DETAILS.
 - INDICATES T RECESSES IN 15' PANEL W/ #4@6" EA FACE. SEE 1/56.01 FOR REINFORCING AT EDGES OF RECESSES.
 - INDICATES R RECESSES IN 17' PANEL W/ #4@6" EA FACE & EA FACE. SEE 1/56.01 FOR REINFORCING AT EDGES OF RECESSES.

Order Plans @ WWW.EDILine.com