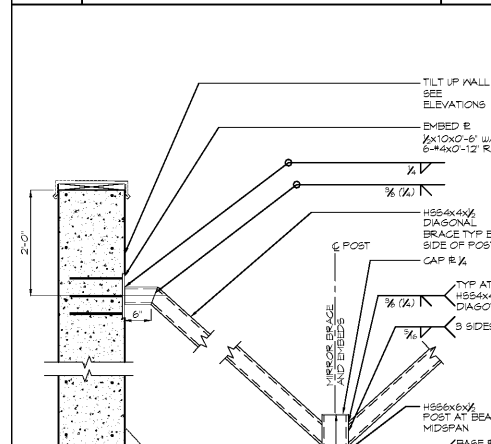
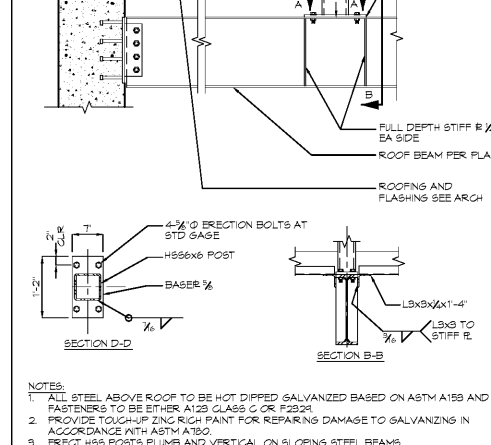


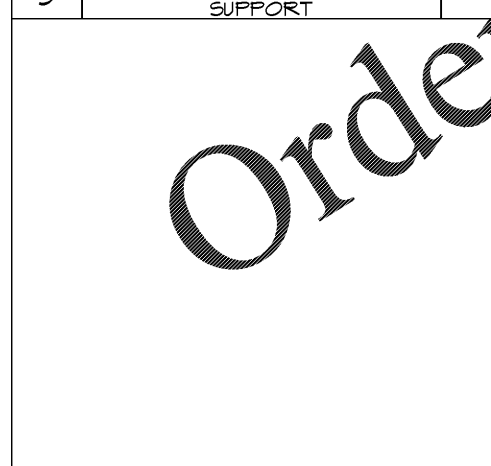
1 PARAPET OVER ROOF



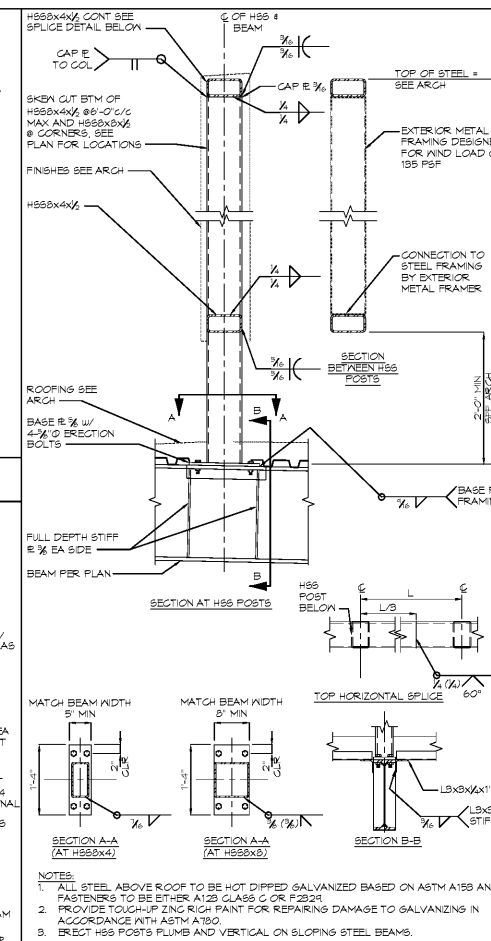
2 TYPICAL SECTION @ SCREEN WALL POST & PARAPET POST



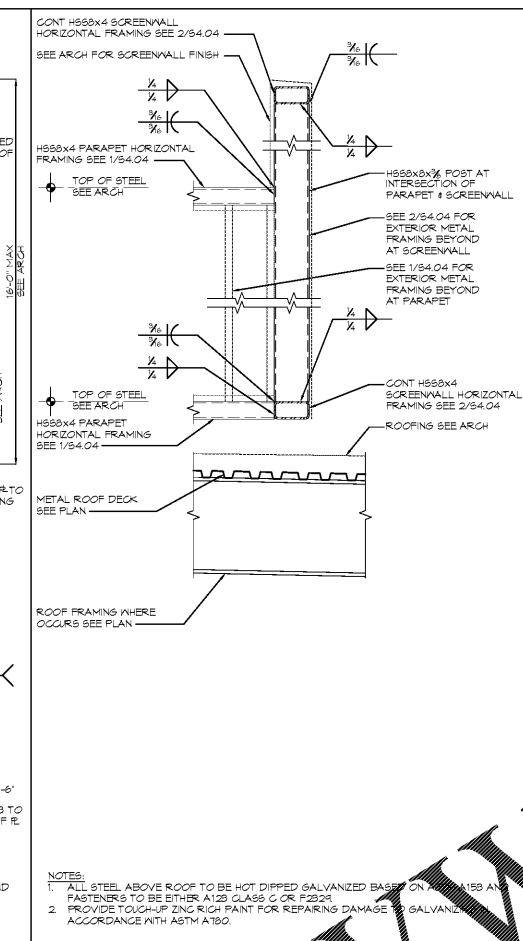
3 PARAPET OVER ROOF CONNECTION TO SCREEN WALL



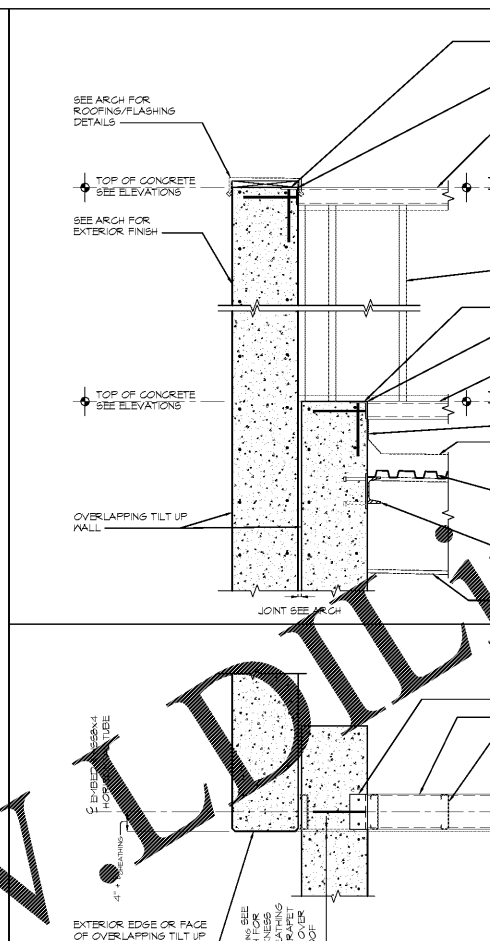
4 PARAPET OVER ROOF CONNECTION TO TILT UP WALL



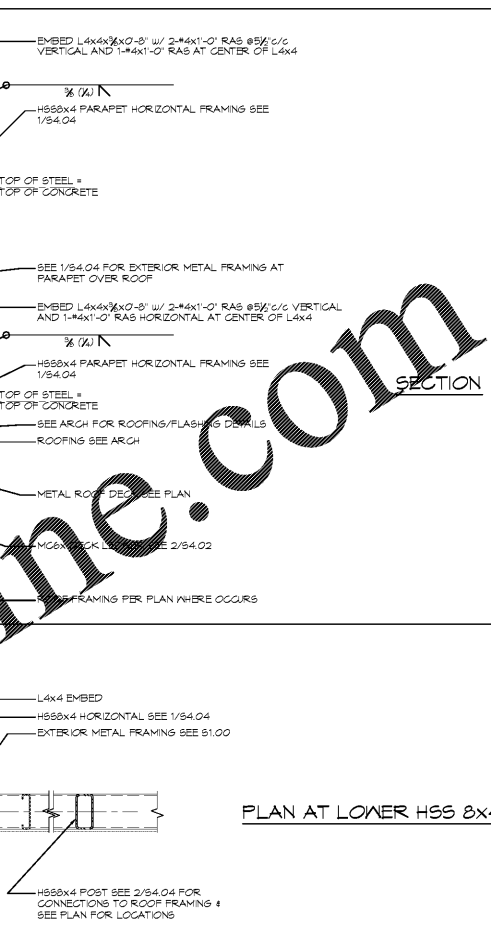
5 DIAGONAL BRACE AT SCREEN SUPPORT



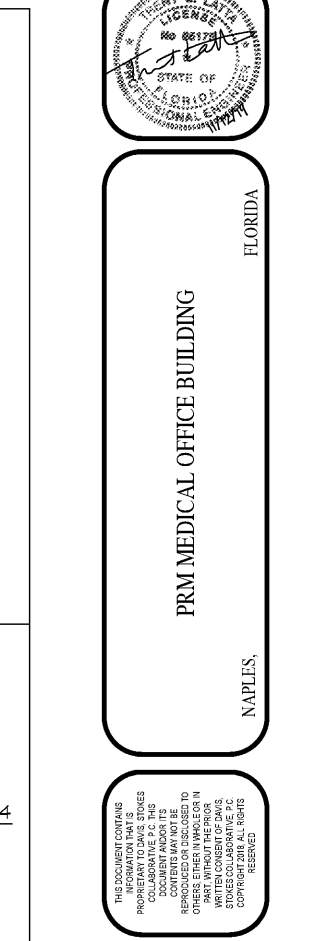
6 PARAPET OVER ROOF CONNECTION TO TILT UP WALL



7 PARAPET OVER ROOF CONNECTION TO TILT UP WALL



8 PARAPET OVER ROOF CONNECTION TO TILT UP WALL



9 PARAPET OVER ROOF CONNECTION TO TILT UP WALL

Order Plans @ WWW.LDILLINE.COM



FLORIDA
PRM MEDICAL OFFICE BUILDING
NAPLES, FL

THIS DOCUMENT CONTAINS INFORMATION THAT IS UNCLASSIFIED AND IS BEING RELEASED TO THE PUBLIC. IF YOU ARE NOT THE INTENDED ADDRESSEE, YOU SHOULD NOT DISSEMINATE, COPY, REPRODUCE OR TRANSMIT THIS INFORMATION. IF YOU HAVE BEEN REPRODUCED OR TRANSMITTED IN WRITING, PLEASE CONTACT THE WRITER FOR PERMISSION TO REPRODUCE. DAVIS STOKES COLLABORATIVE, P.C. ALL RIGHTS RESERVED.

7121 CROSSROADS BLVD.
BRENTWOOD, TN 37027
TEL: (615) 726-0010
MAIL: dca@dstc.com
WEB: www.dstc.com

DAVIS STOKES COLLABORATIVE, P.C.
DSC ARCHITECTS

REVISIONS	
NO.	DESCRIPTION

FRAMING SECTIONS & DETAILS
S4.04
ISSUE DATE: 11.12.19 JOB NUMBER: 19020