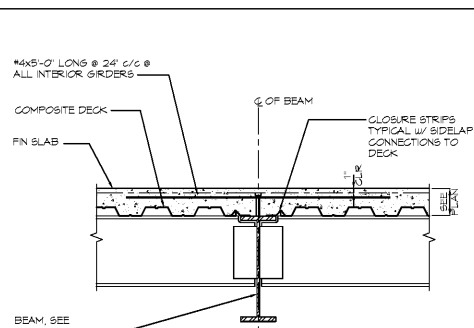


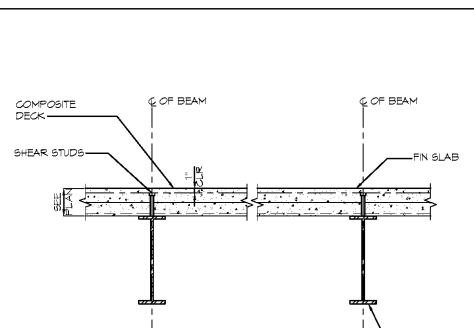
STEEL DECK TYPE	GAUGE	TOTAL COMPOSITE SLAB THICKNESS	MAXIMUM UNSHORED CONSTRUCTION CLEAR SPAN		
			SINGLE	DOUBLE	TRIPLE
1.5 VLI	20	5" NORMAL HEIGHT CONCRETE	6'-7"	7'-8"	7'-4"

NOTES:
 1. EA SHEAR STUD WELDED THROUGH METAL DECK MAY REPLACE ONE WELD.
 2. PROVIDE MINIMUM BEARING LENGTH OF 2" AT ENDS OF DECK.

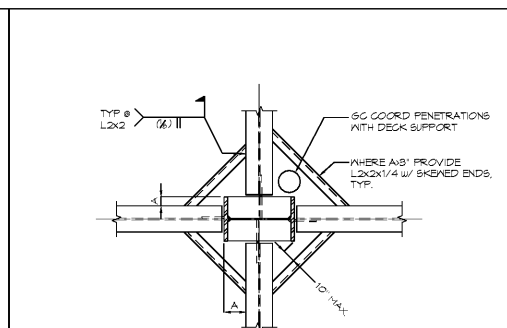
1 TYPICAL COMPOSITE DECK ATTACHMENT DETAIL



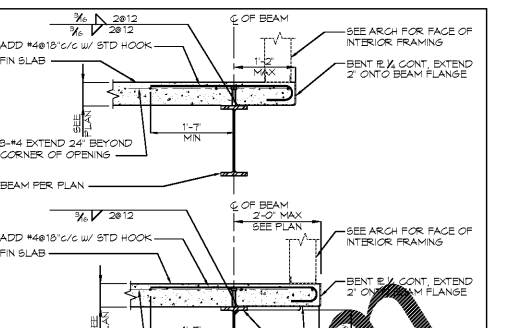
2 TYPICAL COMPOSITE SLAB DETAIL @ ALL GIRDERS



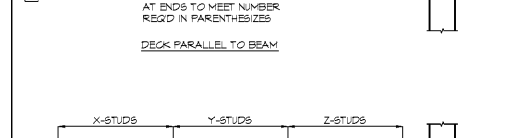
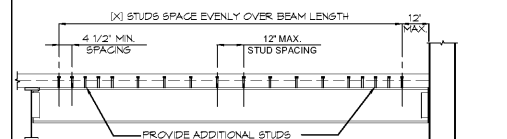
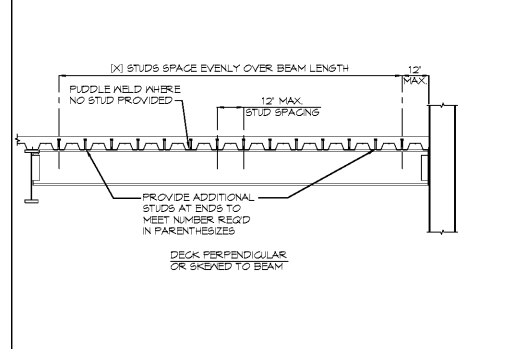
3 TYPICAL COMPOSITE SLAB DETAIL



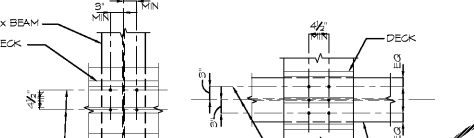
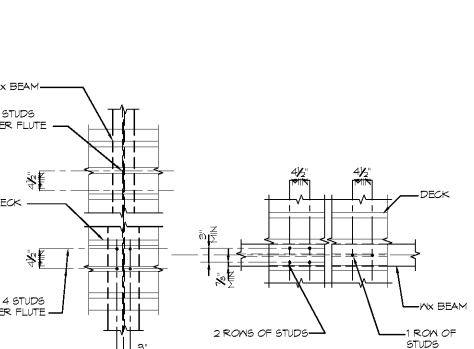
4 TYPICAL DECK SUPPORT @ COLUMN



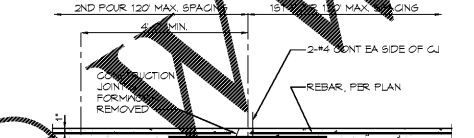
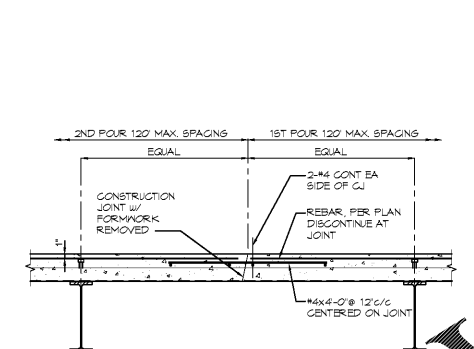
5 TYPICAL INTERIOR EDGE OF SLAB AT FRAMED OPENING



6 TYPICAL COMPOSITE BEAM STUD SPACING



7 TYP CONSTRUCTION JOINT FOR SLAB ON COMPOSITE DECK



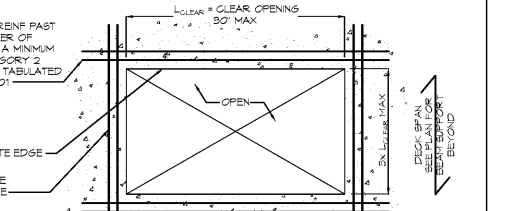
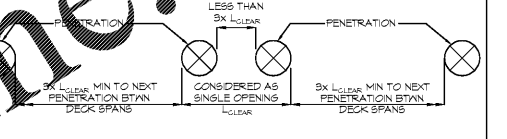
8 TYPICAL UNFRAMED SLAB PENETRATION

REINF SCHEDULE FOR SLAB OPENINGS

CLEAR OPENING SIZE = "L"	REINFORCEMENT
UP TO 8'	NONE
8' TO 16'	2# BOTTOM
16' TO 24'	2# BOTTOM
24' TO 30'	2# BOTTOM
OVER 30'	SEE PLAN FOR BEAM FRAMING

NOTES:
 1. SEE PLAN FOR DECK ORIENTATION AND TYPICAL SLAB REINFORCING.
 2. CUT DECK OPENINGS AFTER REINFORCED SLAB HAS REACHED DESIGN STRENGTH AND A MINIMUM OF 1 HOUR.
 3. PENETRATIONS WITHIN THE SAME DECK FLUTE ARE PERMITTED BUT MUST HAVE THE SAME LENGTH DIMENSION AND BE ALIGNED.
 4. MINIMUM DISTANCE BETWEEN ADJACENT PENETRATIONS THAT ARE NOT IN THE SAME DECK FLUTE BETWEEN DECK SPANS MUST BE SEPARATED BY A MINIMUM OF 3X THE CLEARANCE PENETRATION LAYOUT AND DIMENSIONS TO A STRUCTURAL ENGINEER FOR APPROVAL PRIOR TO POURING SLAB.
 5. SEE 8/24/00 FOR ALTERNATE DETAIL IF DECK OPENINGS IS CUT AND SUPPORTS PRIOR TO POURING CONCRETE SLAB.

8 TYPICAL UNFRAMED SLAB PENETRATION



9 COMPOSITE DECK AT PENETRATION WITHOUT FRAMING

NOTE:
 1. THE MINIMUM NUMBER OF STUDS REQUIRED IS SHOWN AS (X) ON FRAMING PLANS OR 12" C/C MAXIMUM SPACING IF NOT SHOWN ON FRAMING PLANS.
 2. IF TWO STUDS ARE REQUIRED IN ONE FLUTE THE TRANSVERSE SPACING SHALL BE 3" MINIMUM.
 3. ALL FRAMING SHALL HAVE STUDS @ 12" C/C AS A MINIMUM.
 4. AT DECK OVER SKEWED BEAMS PROVIDE STUDS AT EACH DECK FLUTE CROSSING SKEWED BEAM.

NOTE:
 1. ALLOW 8 HOURS MINIMUM BETWEEN ADJACENT POURS.

8 TYPICAL UNFRAMED SLAB PENETRATION

8 TYPICAL UNFRAMED SLAB PENETRATION

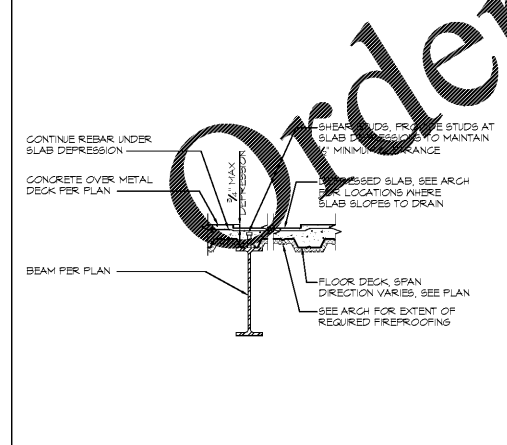
6 TYPICAL COMPOSITE BEAM STUD SPACING

7 TYP CONSTRUCTION JOINT FOR SLAB ON COMPOSITE DECK

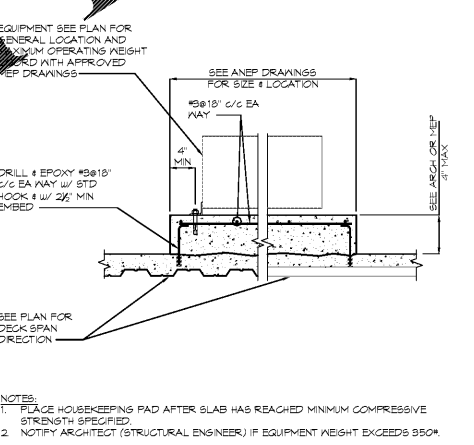
7 TYP CONSTRUCTION JOINT FOR SLAB ON COMPOSITE DECK

9 COMPOSITE DECK AT PENETRATION WITHOUT FRAMING

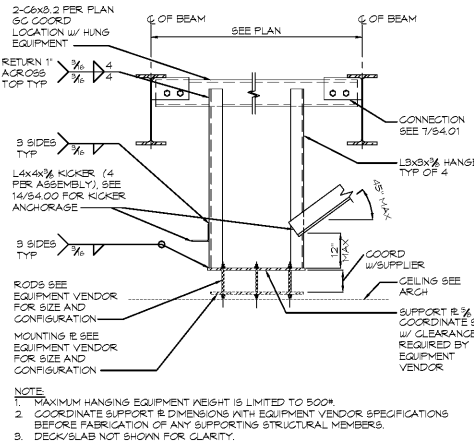
10 STAIR STRINGER AT FLOOR LANDING



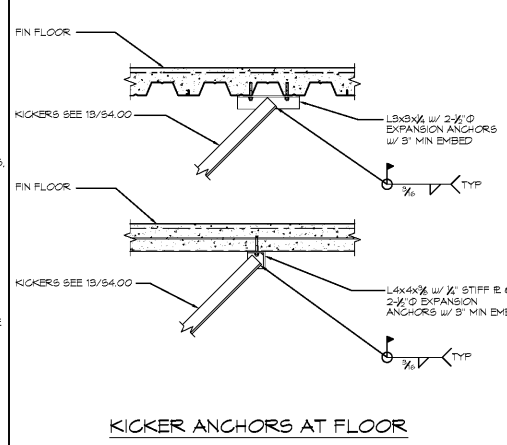
11 FLOOR SLAB DEPRESSION



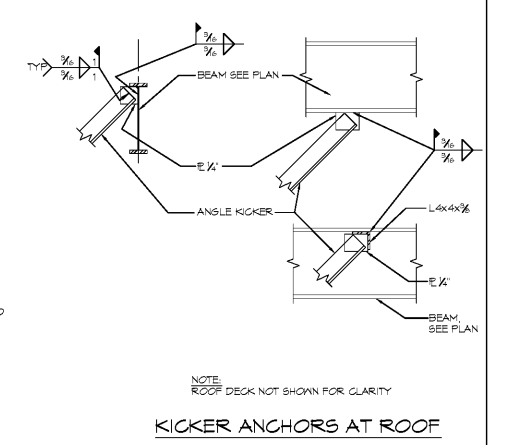
12 TYPICAL HOUSEKEEPING PAD ON COMPOSITE DECK



13 OR/EXAM LIGHT SUPPORT DETAIL



14 TYPICAL KICKER ANCHOR DETAILS



14 TYPICAL KICKER ANCHOR DETAILS



PRM MEDICAL OFFICE BUILDING
 NAPLES, FLORIDA

THIS DOCUMENT CONTAINS INFORMATION THAT IS UNCLASSIFIED AND IS BEING REPRODUCED OR DISCLOSED TO OTHERS EITHER WHOLE OR IN PART WITHOUT THE WRITTEN CONSENT OF DAVIS STOKES COLLABORATIVE, P.C. COPYRIGHT RESERVED.

DAVIS STOKES COLLABORATIVE, P.C.
 7121 CROSSROADS BLVD.
 BRENTWOOD, TN 37027
 TEL: (615) 726-0000
 FAX: (615) 726-0001
 MAIL: dscinfo@dstcc.com
 WWW: www.dstcc.com

DSC ARCHITECTS

REVISIONS

NO.	DATE	DESCRIPTION

FRAMING SECTIONS & DETAILS

54.00

ISSUE DATE: 11.12.19 JOB NUMBER: 19020