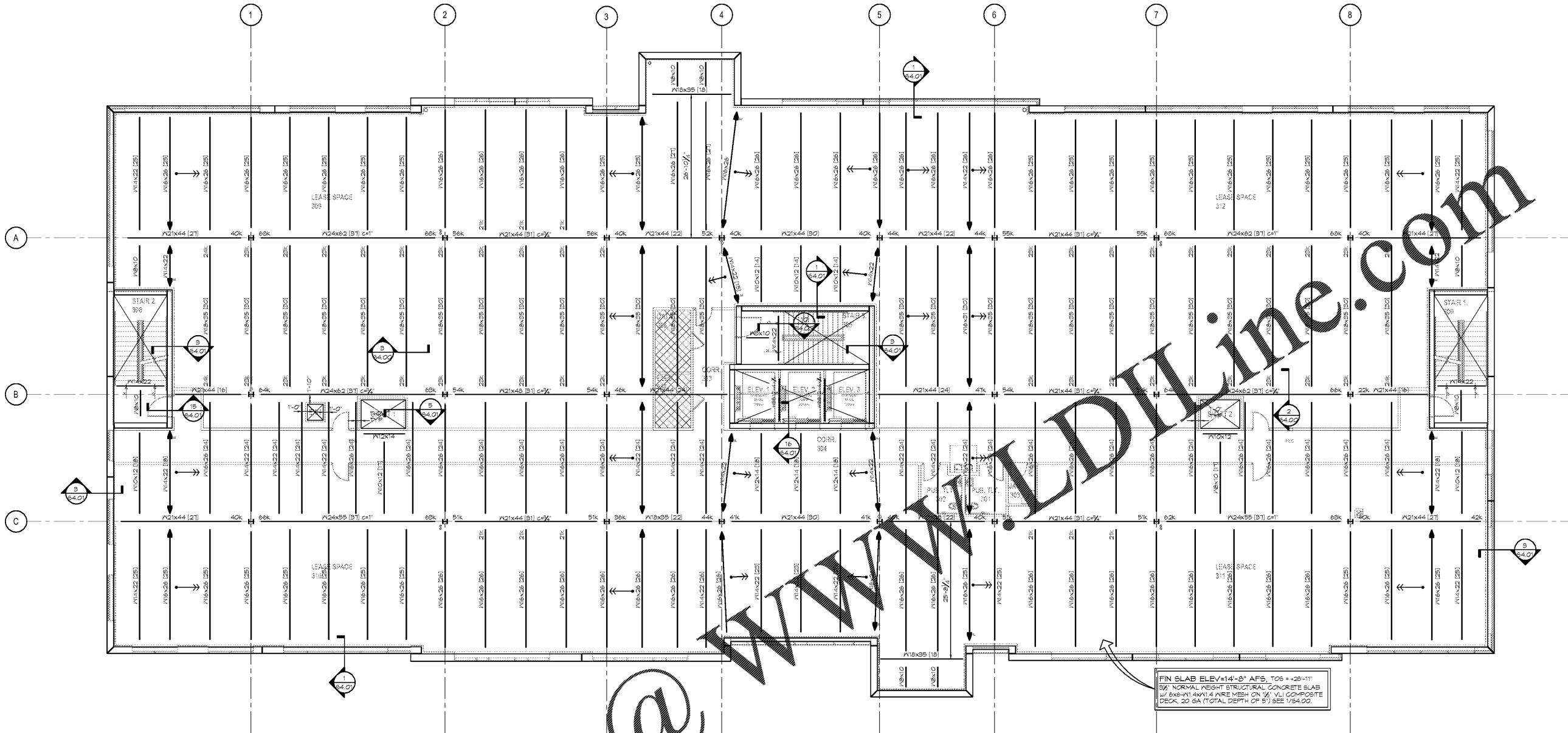


# Order Plans @



### THIRD FLOOR FRAMING PLANS

- NOTES:**
- SEE S1.00 FOR GENERAL NOTES.
  - SEE ARCHITECTURAL DRAWINGS FOR DIMENSIONS NOT NOTED.
  - SEE S1.01 FOR TILT-WALL LAYOUT.
  - SPACE BEAMS EQUALLY BETWEEN GRIDLINES AND/OR WALLS UNLESS NOTED OTHERWISE.
  - INDICATES SLAB OPENING. SEE 1/34.00 FOR ALL UNFRAMED SLAB OPENINGS.
  - INDICATES HANGING EQUIPMENT. SEE HANGING EQUIPMENT SCHEDULE FOR REMAINDER OF INFORMATION.
  - INDICATES COLLECTOR AT EDGE OF CONCRETE TILT UP PANEL WALL. SEE 1/34.03 AND 10/36.00.
  - INDICATES COLLECTOR AT FACE OF CONCRETE TILT UP PANEL WALL. SEE 1/34.03 AND 12/36.00.
  - INDICATES COLLECTOR AT BEAM NEB. SEE 1/34.01.
  - INDICATES COLLECTOR AT COLUMN NEB. SEE 9/34.01.
  - INDICATES DIAGONAL BEAM BRACING. SEE 13/34.01. LOCATE AT MIDSPAN OF BEAM UND.
  - INDICATES FULL DEPTH SHEAR TAB STIFFENER. P. SEE 12/34.01.
  - INDICATES ELECTRICAL AND DATE EQUIPMENT. COORDINATE HOUSEKEEPING PAD REQUIREMENTS W/ ARCH AND MEP. SEE 12/34.00 FOR REMAINDER OF INFORMATION. MAXIMUM EQUIPMENT HEIGHT IS 500".

FIN SLAB ELEV=14'-8" AFS, TOS = -20'-11"  
 6" NORMAL WEIGHT STRUCTURAL CONCRETE SLAB  
 W/ 6X6-14XW1.4 WIRE MESH ON 18" VLI COMPOSITE  
 DECK, 20 GA (TOTAL DEPTH OF 5") SEE 1/34.00.



PRM MEDICAL OFFICE BUILDING  
 NAPLES, FLORIDA

THIS DOCUMENT CONTAINS INFORMATION THAT IS PROPRIETARY TO DAVIS STOKES COLLABORATIVE P.C. THE INFORMATION CONTAINED HEREIN IS NOT TO BE REPRODUCED OR DISCLOSED TO OTHERS WITHOUT THE WRITTEN CONSENT OF DAVIS STOKES COLLABORATIVE P.C. COPYRIGHT RESERVED.

7121 CROSSROADS BLVD.  
 BENTWOOD, TN 37027  
 TEL: (615) 736-0010  
 MAIL: [dcsa@dsccol.com](mailto:dcsa@dsccol.com)  
 WEB: [www.dsccol.com](http://www.dsccol.com)

**DSC ARCHITECTS**

REVISIONS	
NO.	DESCRIPTION

THIRD FLOOR FRAMING PLAN  
**S3.02**  
 ISSUE DATE: 11/12/19 JOB NUMBER: 19020