



FLORIDA
PRM MEDICAL OFFICE BUILDING
NAPLES, FL

THIS DOCUMENT CONTAINS INFORMATION THAT IS PROPRIETARY TO DAVIS STOKES COLLABORATIVE P.C. ANY REPRODUCTION OR DISSEMINATION OF THIS DOCUMENT WITHOUT THE WRITTEN CONSENT OF DAVIS STOKES COLLABORATIVE P.C. IS STRICTLY PROHIBITED. COPYRIGHT RESERVED.

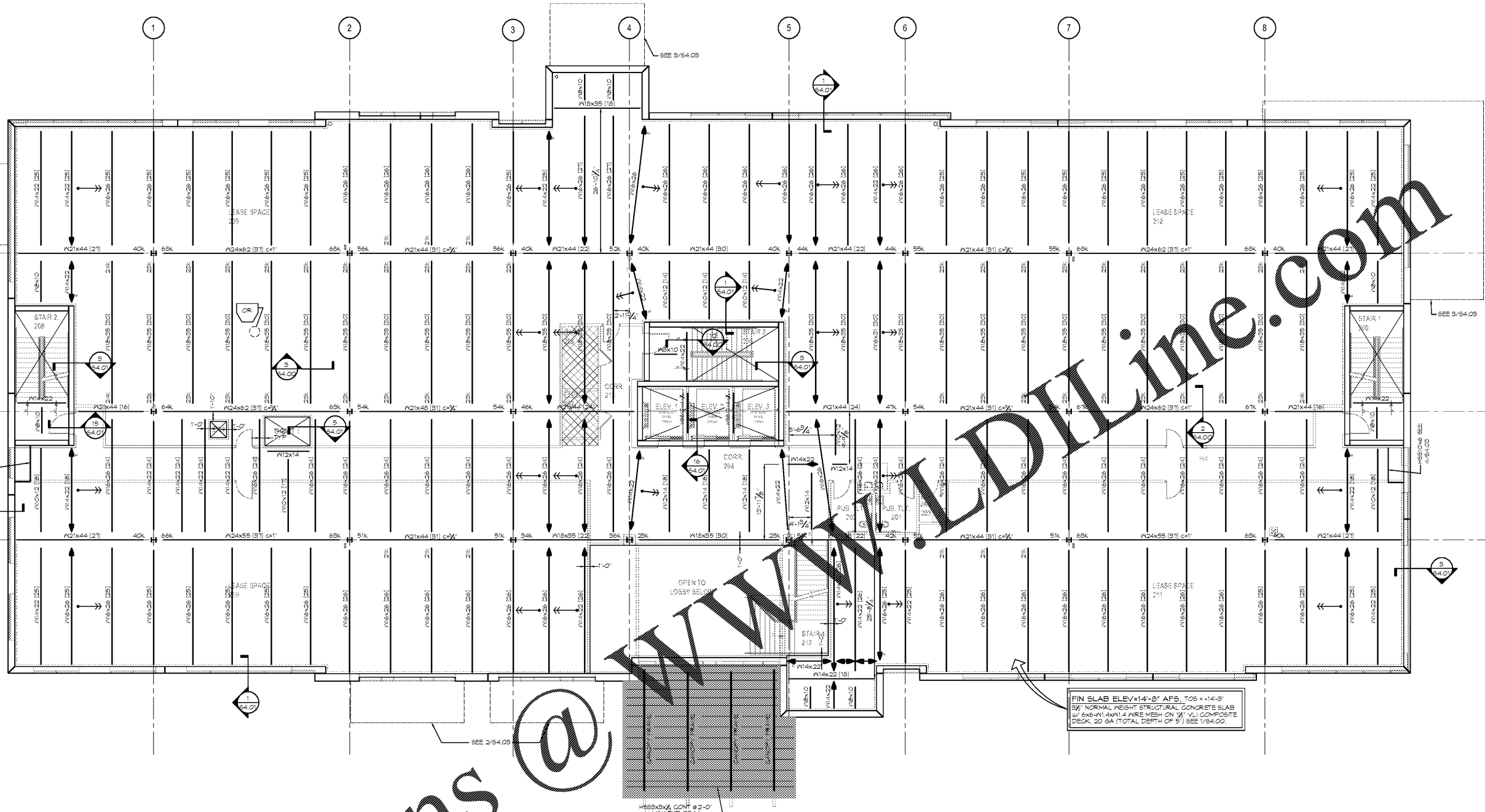
7121 CROSSROADS BLVD.
BRENTWOOD, TN 37027
TEL: (615) 736-0010
MAIL: davis@dstc.com
WWW: www.dstc.com

DAVIS STOKES COLLABORATIVE P.C.
DSC
ARCHITECTS

NO.	DATE	DESCRIPTION

REVISIONS

SECOND FLOOR FRAMING PLAN
53.01
ISSUE DATE: 11/12/19 JOB NUMBER: 19020



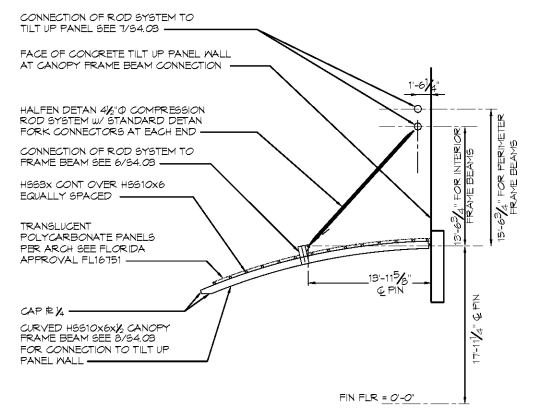
SECOND FLOOR & CANOPY FRAMING PLANS

UNIT MARK	MAXIMUM OPERATING HEIGHT	REMARK
OR	150#	SEE 13/54.00

NOTE: COORDINATE ANCHORAGE OF HANGING EQUIPMENT W/ EQUIPMENT VENDOR DRAWINGS.

- NOTES:
- SEE S1.00 FOR GENERAL NOTES.
 - SEE ARCHITECTURAL DRAWINGS FOR DIMENSIONS NOT NOTED.
 - SEE CANOPY FRAMING ELEVATION FOR FRAMING NOT INDICATED.
 - SEE S1.01 FOR TILT-WALL LAYOUT.
 - SPACE BEAMS EQUALLY BETWEEN GRIDLINES AND/OR WALLS UNLESS NOTED OTHERWISE.
 - INDICATES SLAB OPENINGS. SEE 8/54.00 FOR ALL UNFRAMED SLAB OPENINGS.
 - INDICATES HANGING EQUIPMENT SEE HANGING EQUIPMENT SCHEDULE FOR REMAINDER OF INFORMATION.
 - INDICATES COLLECTOR AT EDGE OF CONCRETE TILT UP PANEL WALL. SEE 1/54.02 AND 10/56.00.
 - INDICATES COLLECTOR AT FACE OF CONCRETE TILT UP PANEL WALL. SEE 1/54.02 AND 12/56.00.
 - INDICATES COLLECTOR AT BEAM WEB SEE 11/54.01.
 - INDICATES COLLECTOR AT COLUMN WEB SEE 9/54.01.
 - INDICATES DIAGONAL BEAM BRACINGS SEE 13/54.01. LOCATE AT MIDSPAN OF BEAM LNO.
 - INDICATES FULL DEPTH SHEAR TAB STIFFENER SEE 12/54.01.
 - INDICATES ELECTRICAL AND DATE EQUIPMENT, COORDINATE HOUSEKEEPING PAD REQUIREMENTS W/ ARCH AND MEP. SEE 12/54.00 FOR REMAINDER OF INFORMATION. MAXIMUM EQUIPMENT HEIGHT IS 500#.

FIN SLAB ELEV+14'-8" AFS, TOS = +14'-9"
5" NORMAL WEIGHT STRUCTURAL CONCRETE SLAB
W/ 6X6-14xW1.4 WIRE MESH ON 1/2" VLI COMPOSITE
DECK, 20 GA (TOTAL DEPTH OF 5") SEE 1/54.00.



CANOPY FRAMING ELEVATION

SCALE: 1/4"=1'-0"

- NOTES:
- SEE S1.00 FOR GENERAL NOTES.
 - SEE ARCHITECTURAL DRAWINGS FOR DIMENSIONS NOT NOTED.
 - ALL HSS CONNECTIONS SHALL BE FITTED AND WELDED W/ CONTINUOUS 3/8" FILLET WELDS OR 3/4" FLARE BEVEL WELDS INC.
 - ALL WELDS SHALL BE GRIND SMOOTH FOR PAINTING. FILLET WELDS MAY BE OVERSIZED AS NEEDED AND GRIND TO PROVIDE A SMOOTH TRANSITION.
 - ALL WELDS SHALL BE VISUALLY INSPECTED AND APPROVED BY THE ARCHITECT.
 - SUBMIT FOR APPROVAL HOLE LOCATIONS FOR ANY ELECTRICAL WIRING TO THE ARCHITECT.
 - SEE ARCHITECTURAL DRAWINGS FOR ARCHITECTURAL COATINGS, PAINT AND FINISH REQUIREMENTS FOR CORROSION PROTECTION OF EXPOSED EXTERIOR STEEL FRAMING.