



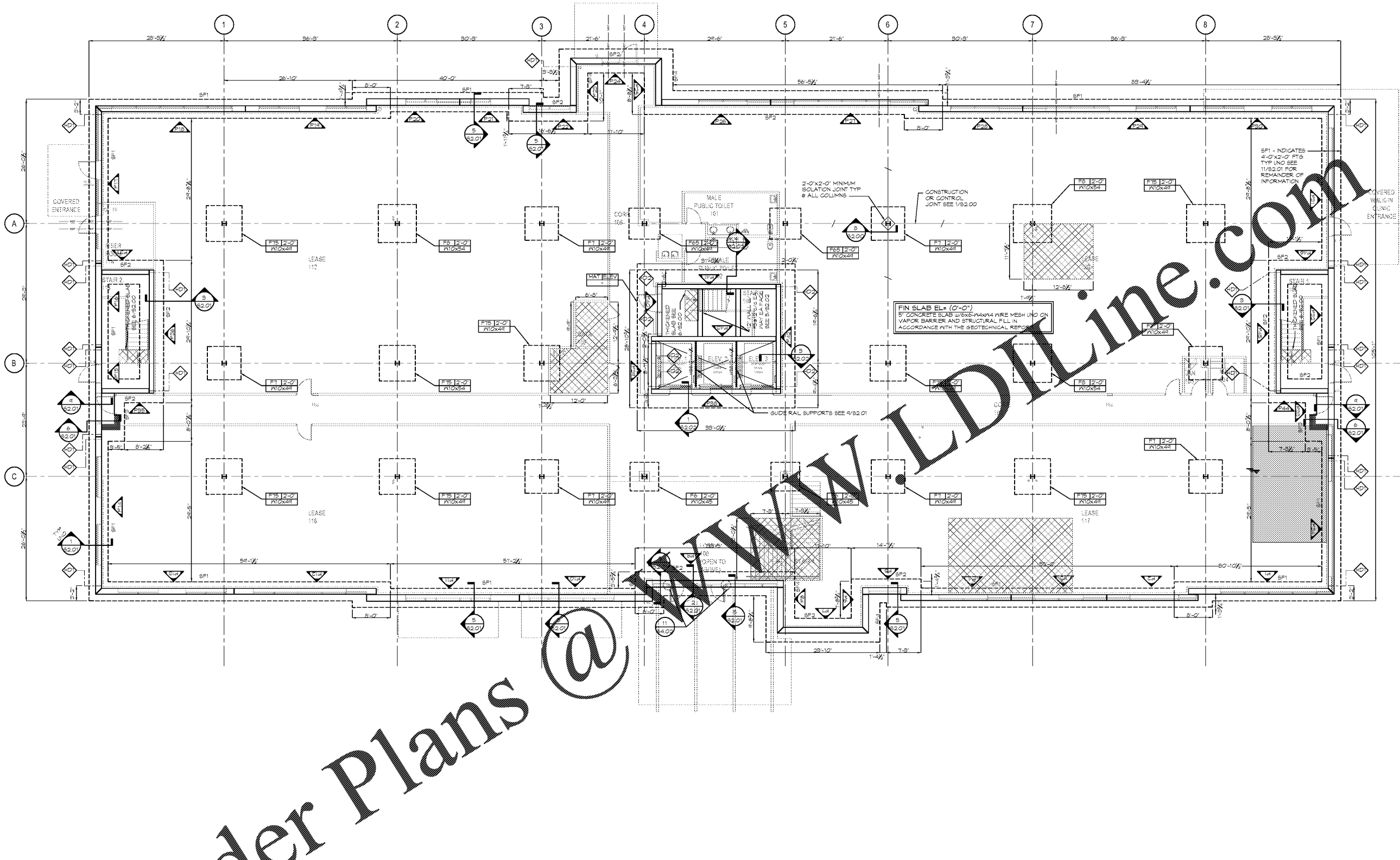
PRM MEDICAL OFFICE BUILDING  
 NAPLES, FLORIDA

THIS DOCUMENT CONTAINS INFORMATION THAT IS PROPRIETARY TO DAVIS STOKES COLLABORATIVE P.C. THE DOCUMENT AND ITS CONTENTS ARE TO BE USED ONLY FOR THE PROJECT AND SITE SPECIFICALLY IDENTIFIED HEREIN. ANY REPRODUCTION OR TRANSMISSION OF THIS DOCUMENT IN ANY FORM OR BY ANY MEANS WITHOUT THE WRITTEN CONSENT OF DAVIS STOKES COLLABORATIVE P.C. IS PROHIBITED. RIGHTS RESERVED.

DAVIS STOKES COLLABORATIVE P.C.  
**DSC ARCHITECTS**  
 7121 CROSSROADS BLVD.  
 BRENTWOOD, TN 37027  
 TEL: (615) 736-0010  
 MAIL: dscinfo@dscoll.com  
 WWW: www.dscoll.com

REVISIONS	
NO.	DESCRIPTION

FOUNDATION PLAN  
**S1.01**  
 ISSUE DATE: 11/12/19 JOB NUMBER: 19020



Order Plans @ [www.LDOnline.com](http://www.LDOnline.com)

**FOUNDATION PLAN**

SCALE: 1/4"=1'-0"

**NOTES:**

- SEE 51.00 FOR GENERAL NOTES.
- ELEVATION 0'-0" IS REFERENCE ELEVATION. SEE CIVIL DRAWINGS FOR ACTUAL ELEVATION.
- INDICATES 8" THICKENED SLAB W/ #5@12" O.C. SEE 15/52.01 FOR REMAINING INFORMATION.
- INDICATES TILT WALL PANEL NUMBER. SEE 55.00 FOR PANEL ELEVATIONS AND 56.00 FOR PANEL DETAILS.
- INDICATES UNDERGROUND UTILITY COORDINATE FOOTING PENETRATIONS WITH CIVIL AND MEP DRAWINGS. SEE 1/52.00. ALL PENETRATIONS THROUGH TILT UP WALL PANELS TO OCCUR BELOW WINDOWS OPENINGS OR TO BE SHOWN ON TILT UP PANEL WALL ELEVATIONS. SEE 55.00-55.10. NOTIFY ARCHITECT IF CONFLICTS OCCUR.
- SEE 4/52.00 FOR COLUMN BASE PLATE DETAIL.
- SEE 10/52.00 FOR GROUND IMPROVEMENT AT FOUNDATIONS.
- SEE 11/52.00 FOR EXTERIOR EQUIPMENT PADS. COORDINATE LOCATION AND DIMENSIONS WITH EQUIPMENT. SEE ARCH AND MEP DRAWINGS FOR EQUIPMENT LOCATIONS.
- SEE 12/52.00 FOR INTERIOR EQUIPMENT PADS. COORDINATE LOCATION AND DIMENSIONS WITH EQUIPMENT. SEE ARCH AND MEP DRAWINGS FOR EQUIPMENT LOCATIONS.
- SEE 5/52.00 FOR SPREAD FOOTINGS SCHEDULE.
- SF - INDICATES SCHEDULED STRIP FOOTINGS MARK. SEE 11/52.01 FOR STRIP FOOTINGS SIZE AND REINFORCING.
- INDICATES 12" THICKENED SLAB W/ #5@12" O.C. EA WAY, TOP & BOT ON VAPOR BARRIER. COORDINATE TRENCHES W/ EQUIPMENT MNFR. SEE 15/52.00 FOR TYPICAL TRENCH DETAIL (WHERE INDICATED BY MEDICAL MRI EQUIPMENT MNFR PROVIDE 12" CONCRETE SLAB W/ #4@12" O.C. GLASS FIBER REINFORCING BARS @ 12" O.C. EA WAY, TOP & BOT ON VAPOR BARRIER. EXTEND REINFORCING BARS 18" INTO ADJACENT SLAB WHERE TYPICAL STEEL REINFORCING OCCURS. PROVIDE GLASS FIBER REINFORCING BARS MNFR AND TESTED TO REQUIREMENTS OF ACI 440.3R. PROVIDE STANDARD HOOKS ON GLASS FIBER REINFORCING BARS AT TRENCHES PER TYPICAL TRENCH DETAIL FOR SLABS.
- DEPRESSED AND SLOPED SLABS TO BE COORDINATED W/ ARCH AND MEP DRAWINGS.
- INDICATES DEPRESSED SLAB OR PIT SEE 2/52.00 FOR REMAINDER OF INFORMATION.
- INDICATES CAST-IN-PLACE CONCRETE WALL. SEE PLAN FOR EXTENTS.
- SEE 14/52.00 FOR UNCOORDINATED THICKENED TENANT SLABS.