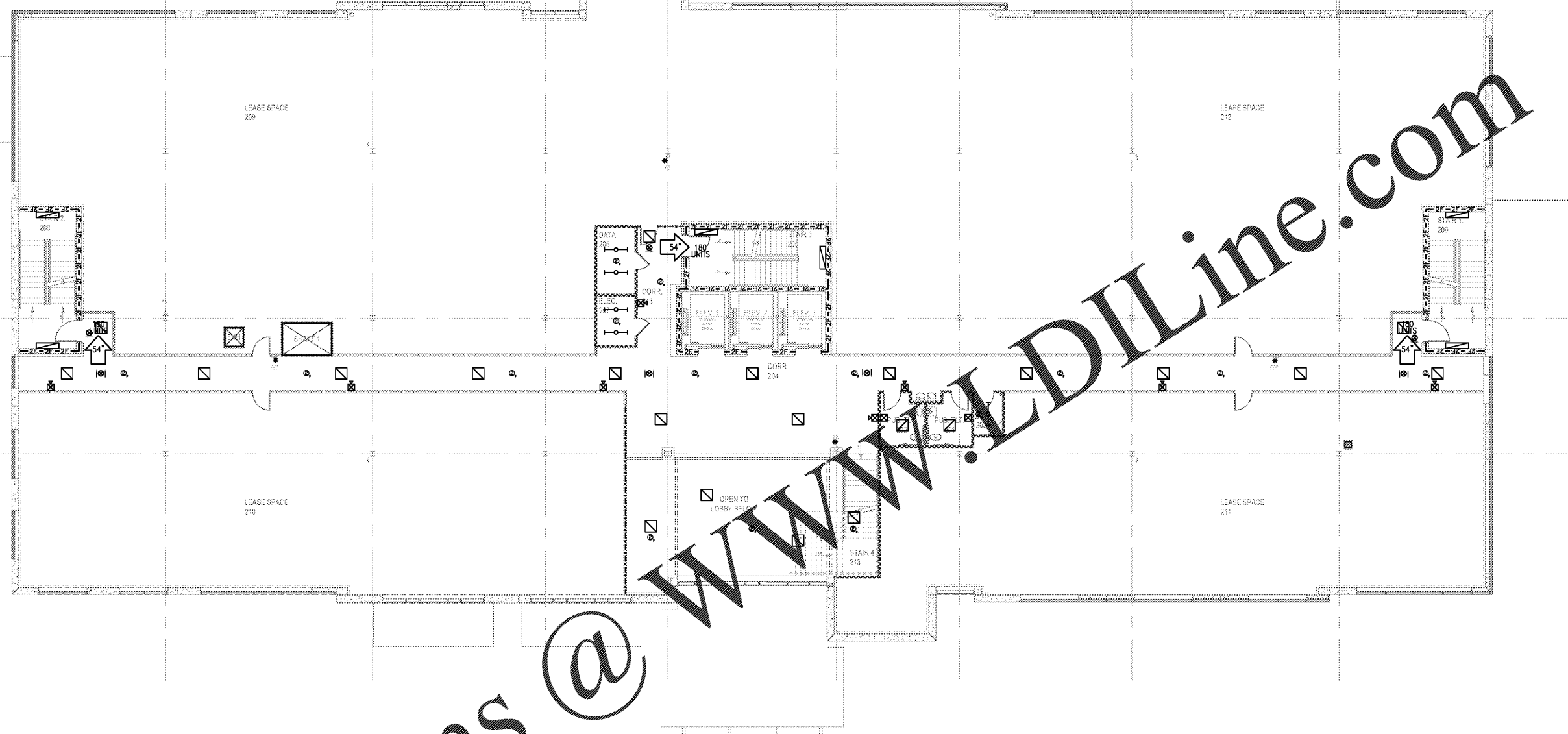


6/5/2019 9:21 AM	DRAWING CREATED	10/26/2019 11:46 AM	DRAWING CREATED
1/15/2019 10:04 AM	LAST DRAWING UPDATE	1/15/2019 10:04 AM	LAST DRAWING UPDATE
1/15/2019 10:04 AM	FILE NAME	1/15/2019 10:04 AM	FILE NAME
1/15/2019 10:04 AM	SCALE FACTOR	1/15/2019 10:04 AM	SCALE FACTOR



Order Plans @ WWW.EDILine.com

EXIT UNIT LEGEND

TOTAL OCCUPANCY LOAD = 269
 TOTAL EXIT UNITS PROVIDED:
 3 @ 54" = 162 / 3 = 540
 TOTAL EXIT CAPACITY = 540 PEOPLE

LIFE SAFETY LEGEND

- EMERGENCY 2X4 LIGHTING
- EMERGENCY 2X2 LIGHTING
- EMERGENCY 1X4 LIGHTING
- EMERGENCY STRIP LIGHTING
- EMERGENCY INCANDESCENT LIGHTING
- ⊙ EMERGENCY WALL MOUNTED LIGHTING
- ⊕ EMERGENCY WALL PACK LIGHTING
- ⊙ EXIT LIGHTS
- ⊙ WALL MOUNTED EXIT LIGHTS
- ⊙ SMOKE DETECTOR
- * FIRE EXTINGUISHERS / CABINETS
- FIRE PULL STATION
- ⊙ FIRE ALARM STROBE
- ⊙ FIRE ALARM CHIME / STROBE

NOTE: ALL SYMBOLS MAY NOT BE USED.

EQUIPMENT LEGEND


- OWNER FURNISHED / CONTRACTOR INSTALLED
- CONTRACTOR FURNISHED / INSTALLED

WALL LEGEND

WALL CONSTRUCTION TYP.

- UNRATED PARTITION TO ABOVE CLG.
- LEASE SPACE PARTITION
- UNRATED PARTITION TO DECK
- X-X-X-X-X-X-X-X SMOKE PARTITION
- ====SB====SB====SB==== SMOKE BARRIER
- ====1F====1F====1F==== 1 HOUR FIRE BARRIER
- ====1FS====1FS====1FS==== 1 HOUR FIRE - SMOKE BARRIER
- ====2F====2F====2F==== 2 HOUR FIRE BARRIER
- ====2FS====2FS====2FS==== 2 HOUR FIRE - SMOKE BARRIER
- ===== 2 HOUR SHAFT BARRIER

NOTE: ALL WALL TYPES MAY NOT BE USED.



PRH
MEDICAL OFFICE BUILDING
 NAPLES, FLORIDA

THE DOCUMENT CONTAINS INFORMATION THAT IS PROPRIETARY TO DAVIS STOKES COLLABORATIVE P.C. THIS DOCUMENT AND ITS CONTENTS ARE NOT TO BE REPRODUCED OR DISCLOSED TO OTHERS WITHOUT THE WRITTEN CONSENT OF DAVIS STOKES COLLABORATIVE P.C. COPYRIGHT © 2019. ALL RIGHTS RESERVED.

7121 CROSSROADS BLVD
 BRENTWOOD, TN 37027
 TEL (615) 726-0010
 FAX (615) 726-0010
 MAIL dscinfo@dsccol.com
 WEB www.dsccol.com

DSC ARCHITECTS

REVISIONS	
NO.	DESCRIPTION

LIFE SAFETY FLOOR PLAN
 SECOND FLOOR

LS1.02

ISSUE DATE: 11.12.19 JOB NUMBER: 19020