



PRH
MEDICAL OFFICE BUILDING
NAPLES, FLORIDA

THIS DOCUMENT CONTAINS PROPRIETARY INFORMATION OF DAVIS STOKES COLLABORATIVE P.C. THIS DOCUMENT AND ITS CONTENTS ARE NOT TO BE REPRODUCED OR DISCLOSED TO ANY OTHER PARTY WITHOUT THE WRITTEN CONSENT OF DAVIS STOKES COLLABORATIVE P.C. COPYRIGHT RESERVED.

DAVIS STOKES COLLABORATIVE P.C.
7121 CROSSROADS BLVD
BENTONWOOD, TN 37027
TEL (615) 726-0010
MAIL dsc@dsccol.com
WWW dsccol.com

DSC ARCHITECTS

REVISIONS	
NO.	DESCRIPTION

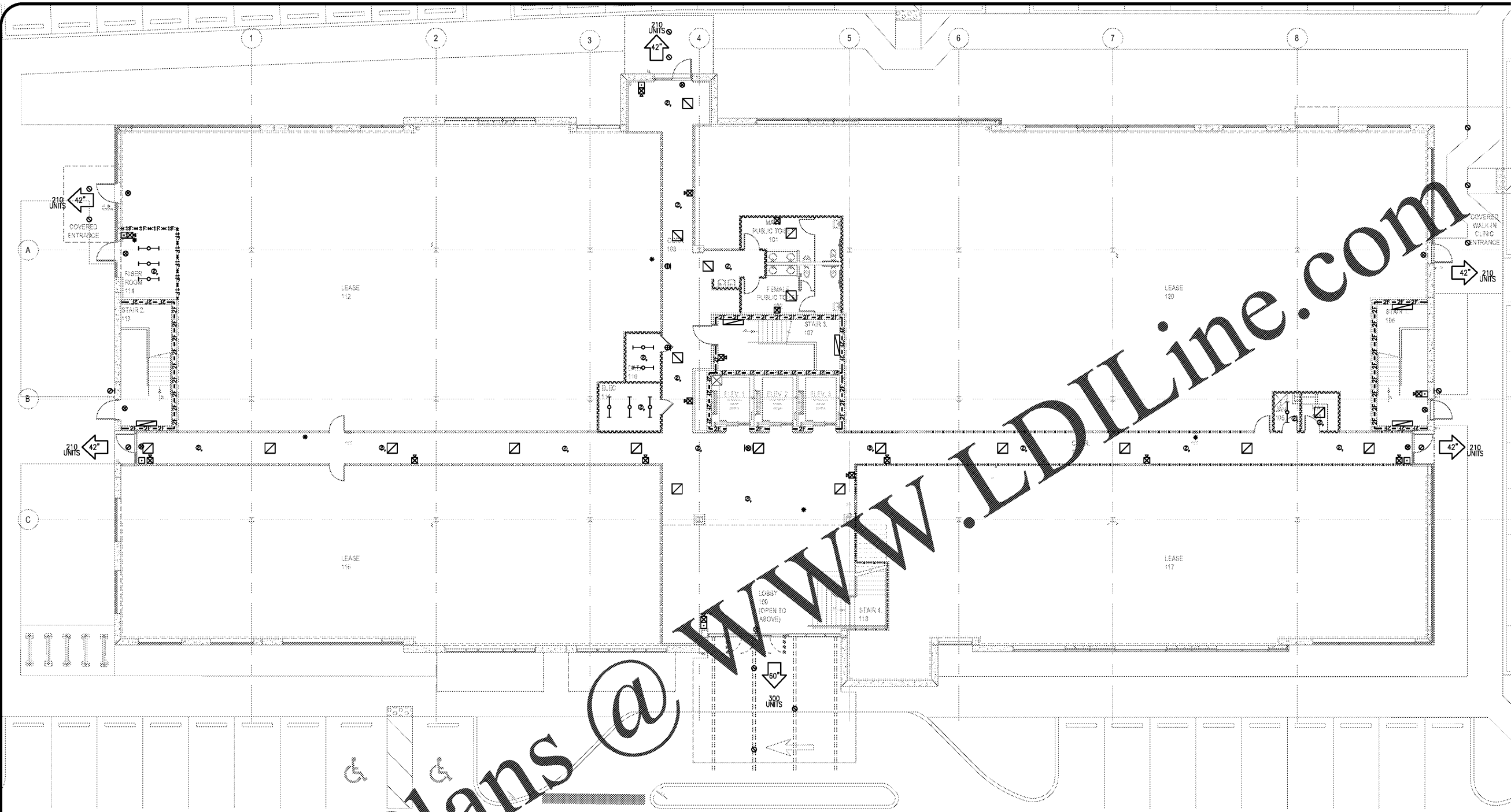
LIFE SAFETY FLOOR PLAN
FIRST FLOOR

LS1.01

ISSUE DATE: 11.12.19 JOB NUMBER: 19020

---	A-COLS	A-WALL	A-FLOOR	A-CEILING	A-ROOF	A-DOOR	A-WINDOW	A-GLASS	A-SCREEN	A-TRIM	A-FURN	A-ELECT	A-PLUMB	A-MECHAN	A-PAINT	A-FINISH	A-OTHER	A-REVISION	A-DATE	A-DRAWN	A-CHECKED	A-SCALE	A-UNIT	A-COMMENTS	
---	---	---	---	---	---	---	---	---	---	---	---	---	---	---	---	---	---	---	---	---	---	---	---	---	---

DRAWING CREATED: 11/17/2019 10:16 AM
LAST DRAWING UPDATE: 11/17/2019 10:10 AM
FILE NAME: 19020_LS1.01.dwg
SCALE FACTOR: 1:96



Order Plans @ WWW.LDILine.com

EXIT UNIT LEGEND

TOTAL OCCUPANCY LOAD = 269
TOTAL EXIT UNITS PROVIDED:

5 @ 42" = 210 / 2 = 1,050
1 @ 60" = 60 / 2 = 300

TOTAL EXIT CAPACITY = 1,350 PEOPLE

LIFE SAFETY LEGEND

- ☒ EMERGENCY 2X4 LIGHTING
- ☒ EMERGENCY 2X2 LIGHTING
- ☒ EMERGENCY 1X4 LIGHTING
- |— EMERGENCY STRIP LIGHTING
- ⊙ EMERGENCY INCANDESCENT LIGHTING
- ⊙ EMERGENCY WALL MOUNTED LIGHTING
- ⊙ EMERGENCY WALL PACK LIGHTING
- ⊙ EXIT LIGHTS
- ⊙ WALL MOUNTED EXIT LIGHTS
- ⊙ SMOKE DETECTOR
- * FIRE EXTINGUISHERS / CABINETS
- ☒ FIRE PULL STATION
- ☒ FIRE ALARM STROBE
- ☒ FIRE ALARM CHIME / STROBE

NOTE: ALL SYMBOLS MAY NOT BE USED.

EQUIPMENT LEGEND

- ☐ OWNER FURNISHED / CONTRACTOR INSTALLED
- ☐ CONTRACTOR FURNISHED / INSTALLED

WALL LEGEND

WALL CONSTRUCTION TYP.

- UNRATED PARTITION TO ABOVE CLG.
- LEASE SPACE PARTITION
- UNRATED PARTITION TO DECK
- X-X-X-X-X-X-X-X SMOKE PARTITION
- ====SB====SB====SB SMOKE BARRIER
- ====1F====1F====1F 1 HOUR FIRE BARRIER
- ====1FS====1FS====1FS 1 HOUR FIRE - SMOKE BARRIER
- ====2F====2F====2F 2 HOUR FIRE BARRIER
- ====2FS====2FS====2FS 2 HOUR FIRE - SMOKE BARRIER
- 2 HOUR SHAFT BARRIER

NOTE: ALL WALL TYPES MAY NOT BE USED.

