



PRH
MEDICAL OFFICE BUILDING
NAPLES, FLORIDA

THIS DOCUMENT CONTAINS INFORMATION THAT IS PROPRIETARY TO DSC ARCHITECTS P.C. THIS DOCUMENT AND ITS CONTENTS ARE NOT TO BE REPRODUCED OR DISCLOSED TO OTHERS WITHOUT THE WRITTEN CONSENT OF DSC ARCHITECTS P.C. COPYRIGHT RESERVED.

DAVIS STOKES COLLABORATIVE P.C.
7121 CROSSROADS BLVD
BRENTWOOD, TN 37027
TEL (615) 726-0010
FAX (615) 726-0010
dsc@dsccol.com
www.dsccol.com

REVISIONS table with columns for NO., DATE, DESCRIPTION.

GENERAL NOTES
G1.01
ISSUE DATE: 11.12.19
JOB NUMBER: 19020

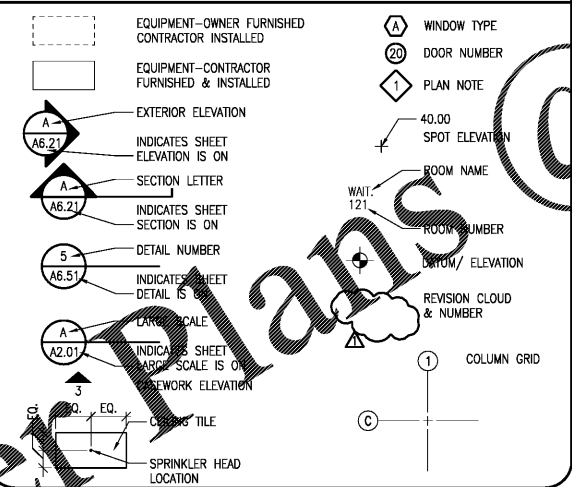
ABBREVIATION LIST

Table of abbreviations for construction materials and terms, including A.C.T. (Acoustical Ceiling Tile), A.F.F. (Above Finish Floor), ALT. (Alternate), ALUM. (Aluminum), APPROX. (Approximate), etc.

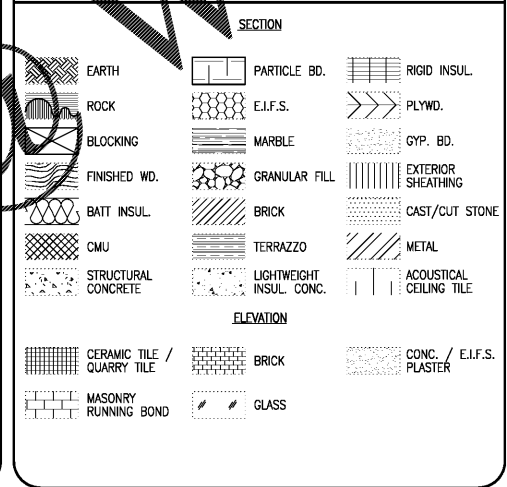
DRAWING INDEX

Table listing drawing sheets and their titles, such as C-0 COVER, G0.01 CODE ANALYSIS, G1.01 GENERAL NOTES SHEET, etc.

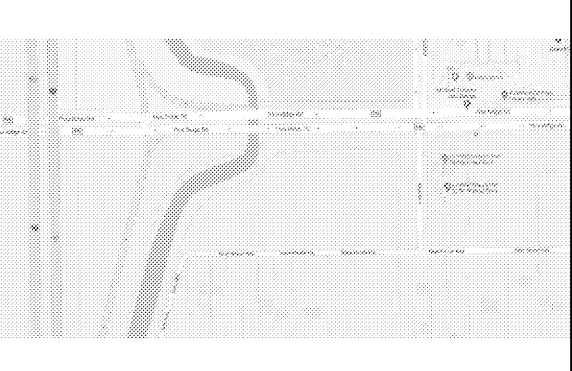
GRAPHIC SYMBOLS



WALL DESIGNATION



VICINITY MAP



BUILDING DATA

Table with columns for PROJECT DESCRIPTION and ENERGY DATA. Project description: A NEW FOUR-STORY MEDICAL OFFICE BUILDING TO BE CONSTRUCTED USING STEEL FRAME AND TILT WALL PANELS. BUILDING TO BE FULLY SPRINKLERED.

BUILDING AREA CALCULATIONS

Table showing building area calculations: 1ST FLOOR 26,853 SF, 2ND FLOOR 26,853 SF, 3RD FLOOR 26,853 SF, 4TH FLOOR 26,853 SF, TOTAL GROSS 107,412 SF.

GENERAL NOTES

- 1.) ALL DRYWALL PARTITIONS ARE DIMENSIONED CENTERLINE TO CENTERLINE. ALL MASONRY PARTITIONS ARE DIMENSIONED OUT TO OUT.
- 2.) CONCEAL ALL PIPING IN DRYWALL. WHERE PIPING IS TOO LARGE, WALLS ARE TO BE FURRED OUT MINIMUM TO CONCEAL PIPING.
- 3.) PROVIDE CHASES FOR MECHANICAL DUCTWORK. REFER TO MECHANICAL DRAWINGS FOR SIZES OF DUCTWORK. WALLS ARE TO BE FURRED OUT MINIMUM TO CONCEAL DUCTWORK.
- 4.) NO FURRING ON CORRIDOR SIDE OF WALLS.
- 5.) ELECTRICAL PANELS, FIRE EXTINGUISHER CABINETS, ETC. LOCATED IN RATED PARTITIONS SHALL BE BACKED WITH DRYWALL AS REQ'D TO MAINTAIN RATING. CONTRACTOR TO VERIFY WALL THICKNESS REQ'D FOR ALL ELECTRICAL PANELS, FIRE EXTINGUISHER CABINETS, ETC.
- 6.) PROVIDE DOUBLE STUDS, BLOCKING, BRACING AND BACK-UP PLATES WHERE REQ'D TO SUPPORT EQUIPMENT, MISCELLANEOUS ITEMS, I.E., TYPICAL CASEWORK, CABINETS, GRAB BARS, TOILET ACCESSORIES, ETC.
- 7.) DO NOT SCALE DRAWINGS. IF DIMENSIONS ARE IN QUESTION, THE CONTRACTOR SHALL BE RESPONSIBLE FOR OBTAINING CLARIFICATION FROM THE OWNER'S REPRESENTATIVE BEFORE CONTINUING WITH CONSTRUCTION.
- 8.) ALL DASHED-IN EQUIPMENT SHALL BE FURNISHED BY THE OWNER AND RECEIVED AND STORED BY THE GENERAL CONTRACTOR. (SEE OWNER-FURNISHED EQUIPMENT MANUAL). CONTRACTOR TO COORDINATE W/ OWNER ON INSTALLATION OF EQUIPMENT.
- 9.) CONTRACTOR SHALL VERIFY ALL DIMENSIONS AND COORDINATE ALL TRADES.
- 10.) CONTRACTOR SHALL VERIFY ALL EQUIPMENT LOCATIONS AND DIMENSIONS AND REQ'D CLEARANCES OF ALL EQUIPMENT (REFER TO DRAWINGS, SPECIFICATIONS AND EQUIPMENT MANUAL).
- 11.) WHERE WALL TYPE DESIGNATIONS APPEAR ON BOTH SIDES OF DOORS AND/OR WINDOWS, WALL TYPE SHALL BE CONTINUOUS ACROSS OPENING.
- 12.) ALL SYMBOLS AND ABBREVIATIONS USED ON THESE DRAWINGS ARE CONSIDERED TO BE INDUSTRY STANDARDS. REFER TO ABBREVIATIONS LIST AND SYMBOL LEGEND ON THIS SHEET FOR REFERENCE. CONTRACTOR TO NOTIFY THE ARCHITECT FOR CLARIFICATION IF ABBREVIATIONS OR SYMBOLS ARE IN QUESTION.
- 13.) ALL SYMBOLS, ABBREVIATIONS AND NOTES MARKED "TYPICAL" OR "TYP." SHALL APPLY IN ALL SIMILAR CIRCUMSTANCES UNLESS NOTED OTHERWISE.
- 14.) THESE DRAWINGS DO NOT CONTAIN INFORMATION W/ REGARD TO CONSTRUCTION SAFETY PROCEDURES. THE CONTRACTOR IS RESPONSIBLE FOR ALL CONSTRUCTION SAFETY AND SHALL PERFORM ALL WORK IN ACCORDANCE W/ STATE AND/ OR FEDERAL CONSTRUCTION SAFETY GUIDELINES.
- 15.) THESE DRAWINGS ARE THE PROPERTY OF THE ARCHITECT. NO CHANGES TO THESE DOCUMENTS, EITHER IN WHOLE OR IN PART, MAY BE MADE WITHOUT THE KNOWLEDGE AND WRITTEN CONSENT OF THE INDIVIDUAL WHOSE NAME AND SIGNATURE APPEARS UPON THE DOCUMENTS.
- 16.) ALL WOOD ABOVE THE ROOF DECK AND AT EXTERIOR PENETRATIONS, WINDOWS AND DOORS SHALL BE P.T. W/ PRESERVATIVE.
- 17.) ALL WOOD BLOCKING, PANELS & BACKING SHALL BE FIRE RETARDANT TREATED.
- 18.) ALL SPRINKLER HEADS TO BE CENTERED IN CEILING TILES.

CONSULTANTS

Table listing consultants for CIVIL (UNDER SEPARATE CONTRACT), MECHANICAL, PLUMBING & ELECTRICAL, and STRUCTURAL.