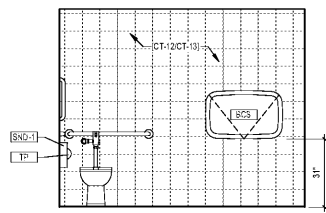
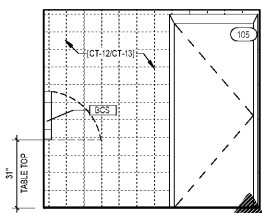


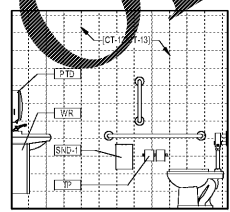
6 RESTROOM WEST ELEVATION
3/8" = 1'-0"



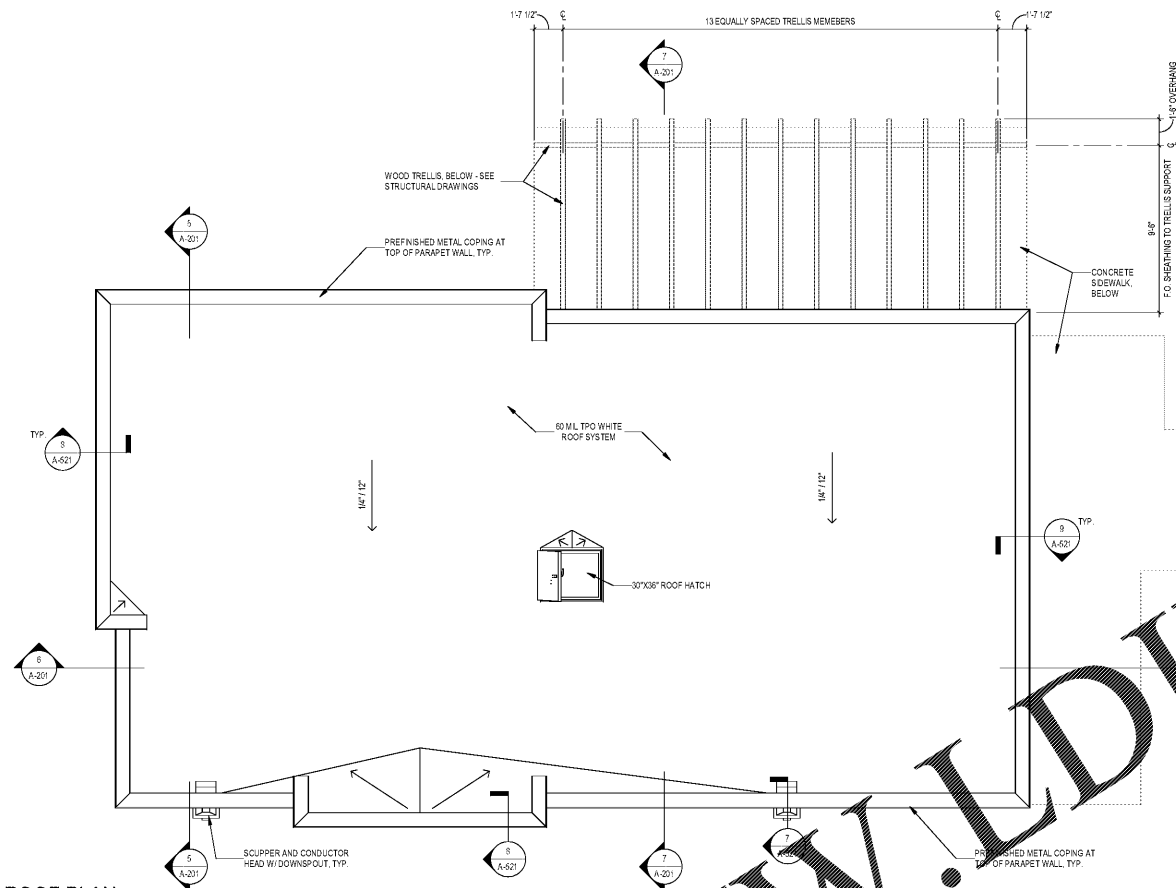
5 RESTROOM EAST ELEVATION
3/8" = 1'-0"



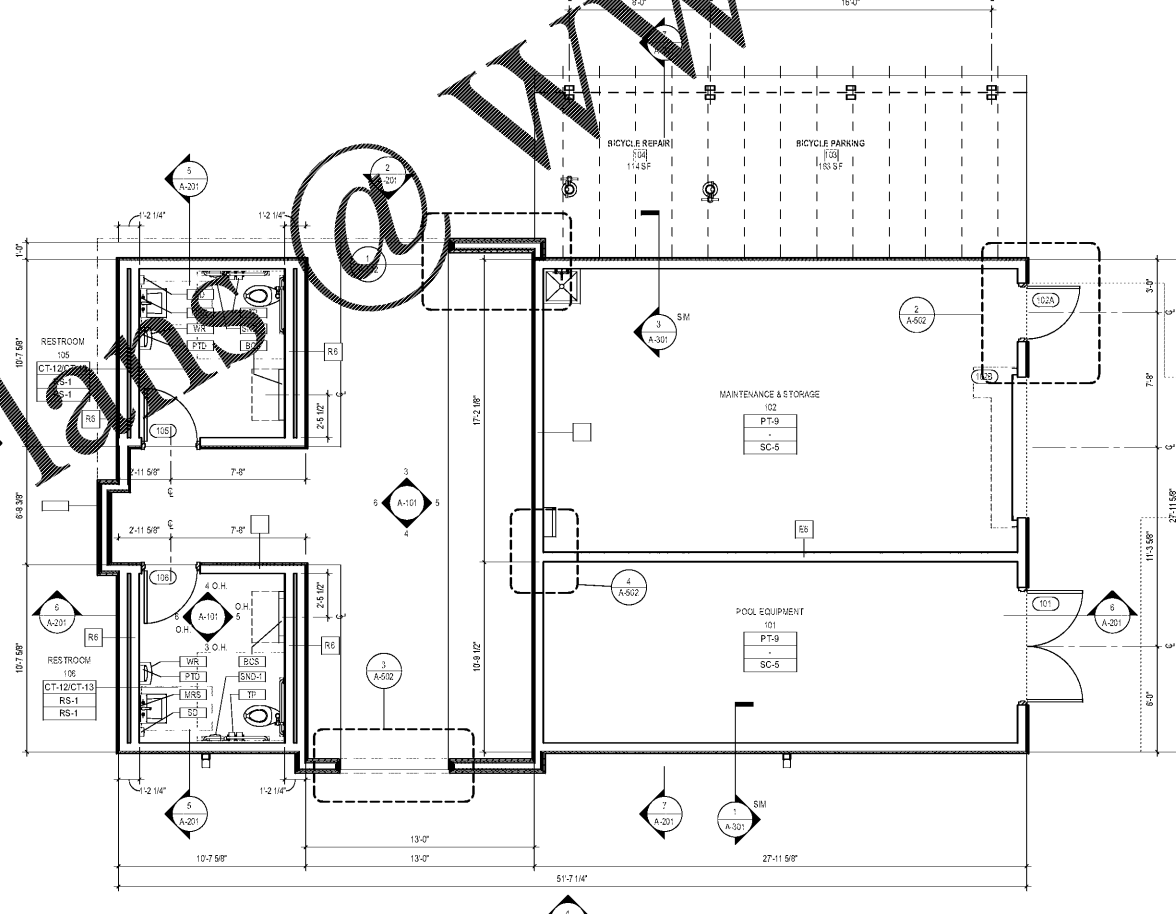
4 RESTROOM SOUTH ELEVATION
3/8" = 1'-0"



3 RESTROOM NORTH ELEVATION
3/8" = 1'-0"



2 ROOF PLAN
1/4" = 1'-0"



1 FIRST FLOOR PLAN
1/4" = 1'-0"

GENERAL PLAN NOTES

- FIRST FLOOR REFERENCE ELEVATION 100'-0" = XXX.XX' (XXXX DATUM, REFER TO CIVL)
- DO NOT SCALE DRAWINGS. IF DIMENSIONS CANNOT BE DETERMINED OR DOCUMENTS ARE IN CONFLICT, THE CONTRACTOR SHALL OBTAIN CLARIFICATION FROM THE ARCHITECT PRIOR TO CONTINUATION OF WORK
- REFER TO PROJECT INFORMATION SHEET FOR MATERIAL, REFERENCE SYMBOLS AND ABBREVIATIONS
- REFER TO LIFE SAFETY DRAWINGS (G-SERIES) FOR LOCATIONS AND EXTENTS OF RATED ASSEMBLIES, AS WELL AS FIRE EXTINGUISHER LOCATIONS. IF PARTITION DESIGNATION DISCREPANCY OCCURS BETWEEN THE CODE DRAWINGS AND FLOOR PLANS, PROVIDE THE PARTITION TYPE INDICATED WITH THE MOST STRINGENT REQUIREMENTS
- REFER TO A-000 SERIES FOR ALL INTERIOR PARTITION TYPES
- REFER TO A-000 SERIES FOR TOILET ACCESSORY MOUNTING DIAGRAMS
- REFER TO A-600 SERIES FOR DOOR INFORMATION AND DETAILS
- REFER TO A-600 SERIES FOR WINDOW TYPES AND DETAILS
- REFER TO A-600 SERIES FOR ROOM FINISH SCHEDULE
- ALL MASONRY DIMENSIONS ARE NOMINAL, UNO
- PARTITION TYPE 'U' TO BE APPLIED TO ALL INTERIOR WALL CONDITIONS TO REMAIN, UNO
- ALL INTERIOR COLUMN WRAPS TO BE PARTITION TYPE 'K', UNO

GENERAL ROOF PLAN NOTES

- COORDINATE PENETRATIONS AND ROOF MOUNTED EQUIPMENT WITH MECHANICAL, PLUMBING, ELECTRICAL, AND STRUCTURAL DRAWINGS
- ALL ROOF PENETRATIONS SHALL BE MADE WITH APPROPRIATE MATERIAL
- ALL EXPOSED METAL ELEMENTS TO BE PRE-FINISHED, COLOR AS SELECTED BY ARCHITECT
- REFER TO SPECIFICATIONS FOR ADDITIONAL INFORMATION ON FINISHES & INSTALLATION REQUIREMENTS
- PRE-INSULATED ROOFING TO BE INDICATED FOR POSITIVE DRAINAGE
- ALL ROOFS ARE TO HAVE POSITIVE SLOPE TO ROOF DRAINS
- PROVIDE ROOF WALK PADS FOR ROOF PROTECTION AT ALL AREAS OF ROOF ACCESS POINTS AND AROUND ROOF HATCHES, LADDERS, MECHANICAL UNITS AND AT AREAS OF MAIN CIRCULATION. DO NOT LOCATE ROOF WALK PADS AS TO INTERFERE WITH PATH OF ROOF DRAINAGE
- REFER TO MECHANICAL AND STRUCTURAL DRAWINGS FOR SIZE AND LOCATION OF ROOFTOP UNITS AND OTHER MECHANICAL EQUIPMENT
- REFER TO CIVL DRAWINGS FOR DOWNSPOUT-TO-SUBSURFACE TIE-IN LOCATIONS
- ROOF SYSTEM TO BE INSTALLED PER MANUFACTURER'S INSTALLATION INSTRUCTIONS INCLUDING PERFORMANCE REQUIREMENTS AT WIND UPLIFT RESISTANCE COMPLYING WITH UL 580 FOR WIND UPLIFT RESISTANCE CLASS 'xxx'
- ALL VENTS THRU ROOF TO MATCH ROOF COLOR/FINISH

GENERAL FINISH PLAN NOTES

- ALL PARTIES RESPONSIBLE FOR DELIVERING FINISHES TO THE SITE SHOULD CHECK QUANTITIES AND DELIVERY DATES AS SOON AS BIDDING IS AWARDED. IT IS THE DIRECT RESPONSIBILITY OF THE CONTRACTOR TO SECURE FINISH CHOICES TO MINIMIZE THE NEED FOR RESELECTION OR ADDITIONAL SHIPPING EXPENSES
- ITEMS REQUIRING FINISH SELECTION THAT DO NOT APPEAR ON THE FINISH DOCUMENTS SHALL BE SELECTED FROM SHOP DRAWINGS, SUBMITTALS AND/OR SAMPLES AS REQUIRED BY ARCHITECTURAL SPECIFICATIONS
- CHANGES OF LEVELS BETWEEN FLOORING MATERIALS TO BE NO GREATER THAN 1/4" UNO
- SAVE ALL CARPET, TILE BASE AND WALLCOVERING USABLE SCRAPS. STORE IN A SPACE TO BE SELECTED BY OWNER. WRAP ITEMS FOR STORAGE IN A PROTECTIVE COVERING CLEARLY MARKING THE CONTENTS. COORDINATE WITH OWNER'S REPRESENTATIVE
- PROVIDE THE OWNER WITH A MAINTENANCE MANUAL OF MANUFACTURER'S RECOMMENDED ROUTINE AND SPECIAL MAINTENANCE INSTRUCTIONS FOR EACH ITEM
- ALL FINISH MATERIALS ARE TO BE SUPPLIED FROM (1) DYE LOT OR COLOR BATCH PER ITEM, INCLUDING, BUT NOT LIMITED TO CARPET, TILE, PAINT AND WALL COVERING
- INSTALL ALL MANUFACTURED ITEMS, FINISH MATERIALS AND EQUIPMENT IN STRICT ACCORDANCE WITH THE MANUFACTURER'S RECOMMENDED INSTRUCTIONS
- THE MINIMUM FLAME SPREAD CLASSIFICATION OF ALL INTERIOR FINISHES SHALL BE CLASS C INTERIOR FINISH (FLAME SPREAD 75-200, SMOKE DEVELOPED 45-60) PER SBC, 2003, ARTICLE 803
- PAINT ALL HOLLOW METAL DOORS, DOOR FRAMES AND WINDOW FRAMES IN PT-4 WITH SEMI-GLOSS FINISH, UNO
- FLOORING TRANSITIONS TO OCCUR AT THE CENTERLINE OF THE DOOR, UNO
- PROVIDE ALUMINUM SCHLUTER STRIPS AT ALL HARD SURFACE FLOORING TRANSITIONS
- SEE REFLECTED CEILING PLANS FOR MATERIAL LOCATIONS AND HEIGHTS
- WOOD DOORS TO BE A-HIGH GRADE RIF-T-CUT BIRCH
- PROVIDE A SEAMING DIAGRAM TO ARCHITECT FOR ALL FLOORING MATERIALS
- PAINT CEILINGS & SOFFITS PT-1, UNO. WHERE REVEAL OCCURS & PT-1 IS ABOVE, PAINT THE REVEAL PT-1
- COORDINATE SURFACE OF WALLS TO RECEIVE DARK PAINT TO BE FINISHED TO A HIGH STANDARD SO AS NOT TO REFLECT IMPERFECTIONS IN WALL CONSTRUCTION OR FINISHING
- PROVIDE WINDOW SHADES ON ALL WINDOWS. SHADES TO BE SELECTED BY ARCHITECT AND SUBMITTED TO OWNER AND CONTRACTOR FOR APPROVAL
- COORDINATE LEAD TIMES FOR ALL REQUIRED LAMINATE FINISHES WITH TOILET PARTITIONS AND MILLWORK INSTALLATIONS
- ALL MATERIAL TO BE INSTALLED IN ACCORDANCE WITH MANUFACTURER'S WRITTEN INSTRUCTIONS
- PAINT ALL EXPOSED COLUMNS ACCORDING TO ROOM DESIGNATED COLOR, UNO

FINISH LEGEND

BASE	MANUFACTURER	PRODUCT	COLOR
BS-1	STONEHARD	STONEHARD BROADCAST	INTEGRATED RESINOUS BASE
			STEEL GRAY
CERAMIC TILE			
CT-12	R/S CERAMICA	GLASS BLOCKS 8"X8"	AZURE
CT-13	R/S CERAMICA	GLASS BLOCKS 8"X8"	DUSTY WHITE
GROUT			
GR-4	LATCRETE	PERMACOLOR	
PAINT			
PT-9	ZOLATONE	FLEX PURE COLOR	MATCH-SHERWIN WILLIAMS SW7561 GREEK VILLA
			EGGSHELL
PT-16	SHERWIN WILLIAMS	PROMAR SERIES 200	SW7561 GREEK VILLA
			FLAT
RESINOUS FLOORING			
RS-1	STONEHARD	STONEHARD BROADCAST	STEEL GRAY
			MEDIUM TEXTURE
RESINOUS FLOORING			
RS-1	N/A	SEALED CONCRETE	

1925 Prospect Ave.
Orlando, FL 32814
P (407) 661-9100
F (407) 661-9101
www.rp.com

Culacci & Peterson
Architects Engineers Planners

OHM
ARCHITECTS ENGINEERS PLANNERS
200 West Avenue, Suite 300
Chattanooga, TN 37402
423.246.1234

SITE KEY:

CLIENT NAME: **HUTTON DEVELOPMENT**
756 Cherry Street
Chattanooga, TN 37402

PROJECT NAME: **ROCKLEDGE FLATS - BUILDING D**
220 Barton Boulevard
Rockledge, FL 32955

SHEET TITLE: **FLOOR PLAN AND ROOF PLAN**

NOV 02, 2015

Revision Schedule	Date
No. Description	

PROJECT NO: 21002
DATE: 20/11/10
DRAWN: [Name]
CHECKED: [Name]

A-101

GMP PRICING SET 15 NOVEMBER 2019