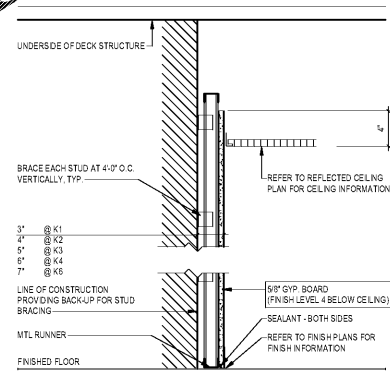
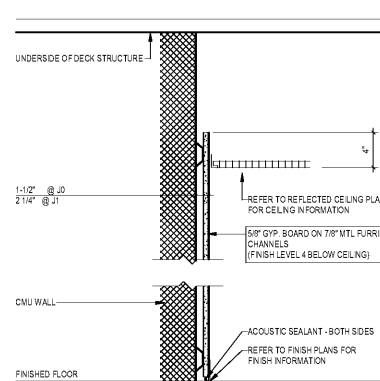


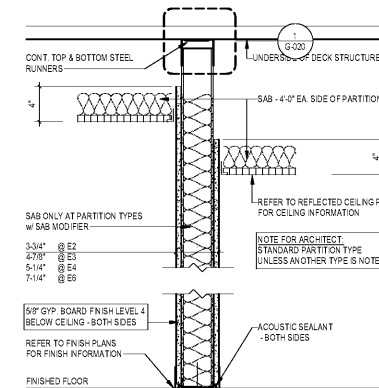
TYPE R' PARTITION WALL



TYPE K' FURR OUT WALL



TYPE J' FURRING WALL



TYPE E' PARTITION TO 4\"/>

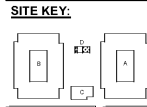
REMOVE PARTITION FRAMING TYPE IF NOT ON PROJECT

NUMERIC CHARACTER	WOOD STUD SIZE	MASONRY BLOCK SIZE
0	-	-
1	3/4"	-
2	1-1/2"	-
3	-	-
4	3-1/2"	3-5/8"
6	5-1/2"	5-5/8"
8	7-1/4"	7-5/8"
10	9-1/4" (VERT.)	9-5/8"
12	-	11-5/8"

- ### GENERAL PARTITION NOTES
- USE PARTITION TYPE _____ UNO
 - FOR CLARITY, PARTITION TYPES DO NOT INDICATE BASE AND FLOOR FINISHES. REFER TO ROOM FINISH SCHEDULE.
 - PROVIDE THROUGH PENETRATION FIRE STOP SYSTEM AT FIRE RATED PARTITIONS, SHAFTWALLS, AND FLOOR OPENINGS. REFER TO SHEET X-XXX.
 - FOR FIRE RESISTANT JOINT SYSTEM HEAD-OF-WALL DETAILS, REFER TO SHEET X-XXX.
 - EXTEND FIRE RATED PARTITIONS TO EXTERIOR FACE OF BUILDING WALL. FOR BRICK OR CMF WALLS, THE EXTERIOR WALL IS THE BACKSIDE OF SHEATHING.
 - CONSTRUCT FIRE RATED MASONRY PARTITIONS WITH CMU-2, TYPICAL.
 - PARTITIONS WITH TYPE INDICATORS ON BOTH SIDES OF PARTITION SHALL BE CONSTRUCTED TO SATISFY BOTH CONDITIONS INDICATED.
 - APPLY A CONTINUOUS BEAD OF ACOUSTICAL SEALANT AROUND ALL ELECTRICAL WALL BOXES.
 - FOR NON-FIRE RATED PARTITIONS, APPLY ACOUSTICAL SEALANT TO PENETRATIONS ABOVE THE CEILING IN FULL-HEIGHT PARTITIONS, UNO.
 - PROVIDE MOISTURE RESISTANT G.W.B. ON ALL TOILET, SHOWER, BATH, AND MECHANICAL ROOM WALLS, UNO.
 - INSTALL 1/2" CEMENT BACKER BOARD IN ALL SHOWERS THAT ARE TILED WITH CERAMIC TILE.
 - PROVIDE CONTROL JOINTS AT 30' MAX. PARTITIONS LOCATE NUMERICALLY OR EVENLY SPACED ON WALLS IF NOT SHOWN OTHERWISE. REVIEW PROPOSALS WITH ARCHITECT PRIOR TO INSTALLATION.

- ### GYPSON BOARD APPLICATION
- USE _____ GYP. BOARD (GGR-U) UNO.
 - USE _____ GYP. BOARD (GGR-M) IN TOILET ROOMS, UNO.
 - USE _____ GYP. BOARD (GGR-T) IN CERAMIC TILED APPLICATIONS, UNO.
 - USE _____ GYP. BOARD (GGR-C) AT SUSPENDED GYP. BOARD CEILING, UNO.
 - USE _____ IMPACT RESISTANT GYP. BOARD (GGR-AS) FROM FLOOR LINE TO 4' AFF IN CORRIDORS AND SOLLEY CLEAN WORKROOMS, UNO.

1925 Prospect Ave.
Orlando, FL 32814
P (407) 661-9100
F (407) 661-9101
www.r.p.com



CLIENT NAME
HUTTON DEVELOPMENT
756 Cherry Street
Chattanooga, TN 37402

PROJECT NAME
ROCKLEDGE FLATS - BUILDING D
220 Barton Boulevard
Rockledge, FL 32955

SHEET TITLE
RATED ASSEMBLIES

Revision	Description	Date

NOV 03, 2015

PROJECT NO. 21002
DATE 20/09/10
DRAWN
CHECKED
GMP PRICING SET 15 NOVEMBER 2019

G-020