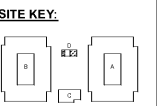
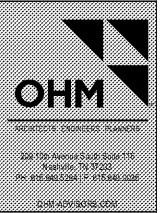


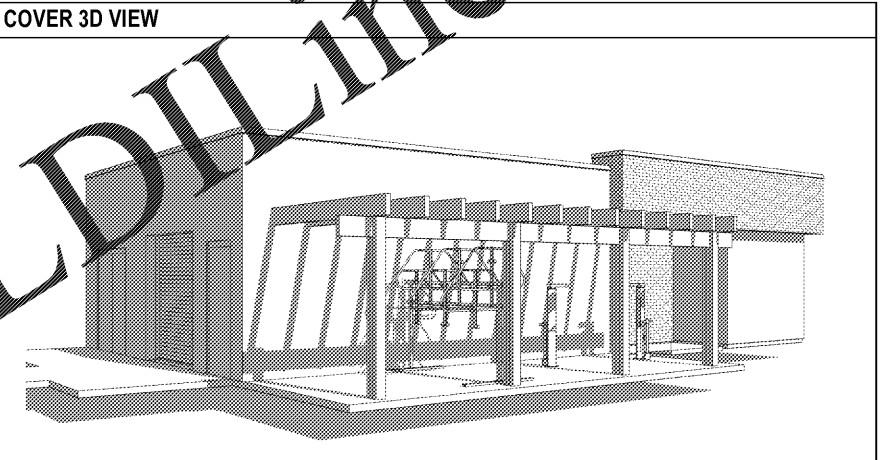
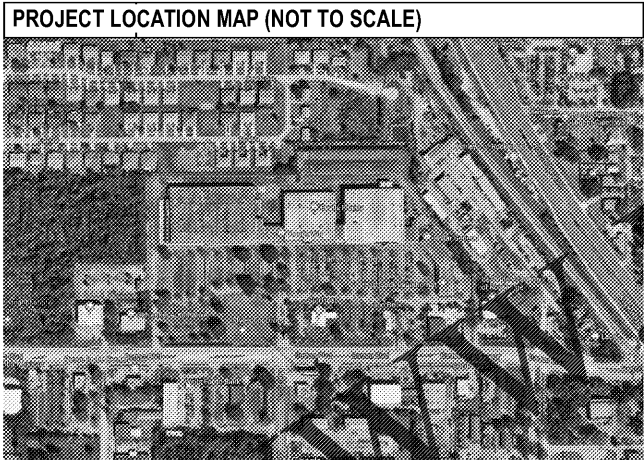
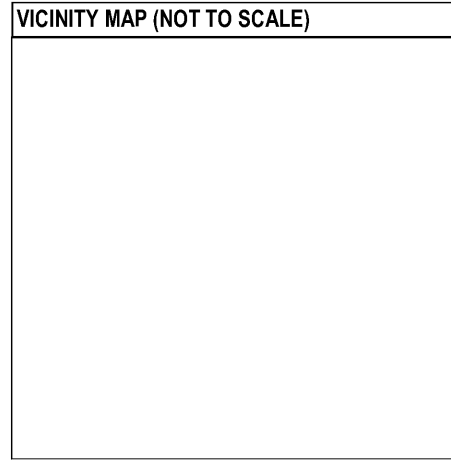
# ROCKLEDGE FLATS - BUILDING D

220 Barton Boulevard  
Rockledge, FL 32955

GMP PRICING SET 15 NOVEMBER 2019



NUMBER	SHEET NAME
<b>GENERAL</b>	
G-000	COVER
G-001	ARCHITECTURAL NOTES AND SYMBOLS
G-002	SO VIEWS
G-010	TYPICAL MOUNTING HEIGHTS & CLEARANCES
G-020	RATED ASSEMBLIES
G-031	LIFE SAFETY
<b>STRUCTURAL</b>	
S001	GENERAL NOTES
S002	QUALITY ASSURANCE
S111	FOUNDATION PLAN - UTILITY BLDG
S112	ROOF FRAMING PLAN - UTILITY BLDG
S201	SECTIONS AND DETAILS
S301	FRAMING DETAILS
<b>ARCHITECTURAL</b>	
A-101	FLOOR PLAN AND ROOF PLAN
A-201	EXTERIOR ELEVATIONS & BUILDING SECTIONS
A-211	BUILDING SECTIONS
A-301	WALL SECTIONS
A-601	DOOR AND OPENING SCHEDULE AND DETAILS
A-701	FLOOR 1 REFLECTED CEILING PLAN
<b>MECHANICAL</b>	
M001	MECHANICAL SPECS, LEGEND, & SCHEDULES
M101	MECHANICAL FLOOR PLAN
<b>PLUMBING</b>	
P001	PLUMBING SPECS, LEGEND, & SCHEDULES
P101	PLUMBING FLOOR PLAN WATER PIPING
P202	PLUMBING FLOOR PLAN WASTE PIPING
<b>ELECTRICAL</b>	
E101	ELECTRICAL FLOOR PLAN

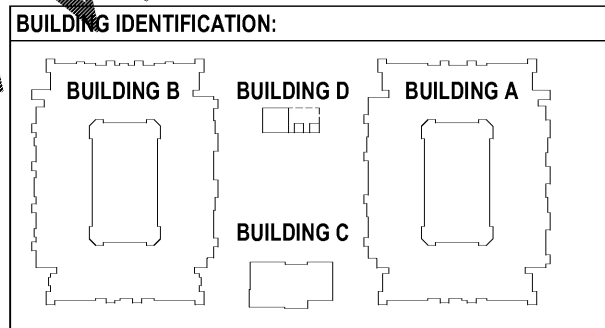


**Scope of Work**  
THIS PROPOSED PROJECT WILL CONSIST OF A (1) STORY APARTMENT COMPLEX UTILITY BUILDING

**Project Information**  
JURISDICTION AUTHORITY  
CITY OF ROCKLEDGE  
BUILDING DIVISION  
1600 HUNTINGTON LANE  
ROCKLEDGE, FL 32955  
(PHONE): (321) 221-7540  
NUMBER OF SETS: (X) SIGNED & SEALED SETS

**Code Information:**  
BUILDING: FLORIDA BUILDING CODE, BUILDING - 6TH EDITION (2017)  
FIRE: FLORIDA FIRE PREVENTION CODE - 6TH EDITION  
NATIONAL FIRE PROTECTION ASSOCIATION (NFPA) 101 W/ STATE FIRE MARSHAL AMENDMENTS  
NATIONAL FIRE PROTECTION ASSOCIATION (NFPA) 101 W/ STATE FIRE MARSHAL AMENDMENTS  
LIFE SAFETY: NFPA 101 - 6TH EDITION  
MECHANICAL: FLORIDA BUILDING CODE, MECHANICAL - 6TH EDITION (2017)  
ELECTRICAL: NATIONAL ELECTRICAL CODE - (2014)  
FUELS/GAS: FLORIDA BUILDING CODE, FUELS/GAS - 6TH EDITION (2017)  
ACCESSIBILITY: FLORIDA BUILDING CODE, ACCESSIBILITY - 6TH EDITION (2017)  
ENERGY: FLORIDA BUILDING CODE, ENERGY CONSERVATION - 6TH EDITION (2017)

**Building Construction Data**  
OCCUPANCY CLASSIFICATION (FBC 310.3): UTILITY GROUP, U  
CONSTRUCTION TYPE (FBC TABLE 602): TYPE 5-B  
MAXIMUM HEIGHT (FBC TABLE 504.3): HEIGHT - 40'  
ACTUAL HEIGHT: HEIGHT - 14'  
MAXIMUM NUMBER OF STORIES (FBC TABLE 504.4): ONE (1)  
MAXIMUM NUMBER OF STORIES (FBC TABLE 504.4): ONE (1)  
MAXIMUM AREA (FBC TABLE 506.2): 5,500 SQ. FT.



**City, State & Fire Deferred Submittals**

PLANS FOR THE DEFERRED SUBMITTAL ITEMS (LISTED BELOW) SHALL BE SUBMITTED IN A TIMELY MANNER THAT ALLOWS A MINIMUM OF 30 WORKING DAYS FOR INITIAL PLAN REVIEW. ALL COMMENTS RELATED TO THE DEFERRED SUBMITTAL MUST BE ADDRESSED TO THE SATISFACTION OF THE PLAN CHECK DIVISION PRIOR TO APPROVAL OF THE SUBMITTAL ITEMS.

1. SPRINKLER SYSTEM
2. FIRE ALARM SYSTEM
3. SIGN PACKAGE

**Florida Product Approval/Notice of Acceptance (NOA) Information**

PRODUCT CATEGORY	SUB CATEGORY	DESCRIPTION	MANUFACTURER & MODEL NUMBER OR PRODUCT NAME	N.O.A. #	N.O.A. EXPIRATION DATE	FL PRODUCT APPROVAL #
ROOFING	SINGLE PLY ROOF SYSTEMS	PVC ROOFING SYSTEMS OVER STEEL DECK	REMAK CORPORATION	16-091-09	JAN. 08, 2021	4801
ROOFING	COPING	EDGE TERMINATION SYSTEMS	METAL-ERANIC	13-04-9303	DEC. 11, 2018	-
CLADDING	STORE FRONT SYSTEM	ALUMINUM STOREFRONT SYSTEM (L.I.)	KUNNEER P	19-023-09	FEB. 28, 2023	1407-06
CLADDING	EFFSON STUDS	OUTSULATION/INSULATED WEATHER BREAKERS OVER SHEATHING	GREENHECK ESD-650X	17-087-13	AUG. 15, 2022	-
CLADDING	EFFSON CMU	OUTSULATION/INSULATED WEATHER BREAKERS OVER CONCRETE BLOCKS	GREENHECK ESD-650X	17-087-13	AUG. 15, 2022	-
DOORS	SWINGING	BEREY* (IR)P	MEKER DOOR, INC.	14-101-03	JULY 18, 2020	-
LOUVERS	FIXED ALUMINUM	HORIZONTAL	GREENHECK ESD-650X	-	-	6873
LOUVERS	FIXED ALUMINUM	RIGHT PROF. HORIZONTAL	GREENHECK ESD-650X	-	-	1088

**MATERIAL SYMBOL LEGEND**

CONCRETE	WOOD	RIGID INSULATION	4-4 TILE
CONCRETE MASONRY UNITS	ROUGH WOOD	WOOD BOARD SIDING NARROW	8-8 TILE
FACE BRICK	SHM	WOOD BOARD SIDING WIDE	12x12 TILE
ALUMINUM	PLYWOOD	ACOUSTICAL TILE	EARTH / COMPACT FILL
STEEL	BATT INSULATION	GYPSUM WALL BOARD	POROUS FILL GRAVEL

**DRAWING SYMBOLS**

**VIEW REFERENCES**  
SM (1) A-101 DETAIL INDICATOR  
SM (1) A-101 SMALL DETAIL INDICATOR  
SM (1) A-101 SECTION DETAIL INDICATOR  
SM (1) A-101 WALL SECTION INDICATOR  
SM (1) A-101 BUILDING SECTION INDICATOR  
SM (1) A-101 EXTERIOR ELEVATION INDICATOR  
SM (1) A-101 INTERIOR ELEVATION INDICATOR

**NOTES & ANNOTATIONS**  
SHEET KEYNOTE INDICATOR  
REFERENCE KEYNOTE INDICATOR  
VISUAL DISPLAY / SURFACE INDICATOR  
MARKER BOARD  
EXISTING MARKER BOARD  
TACK BOARD  
EXISTING TACK BOARD  
MIRROR  
EXISTING MIRROR  
LENGTH  
LOCKER INDICATOR  
REVISION INDICATOR  
ROOM NAME  
ROOM IDENTIFIER WITH ROOM NAME, NUMBER, AND AREA  
WALL TYPE INDICATOR  
WINDOW / LOUVER INDICATOR (REFER TO SCHEDULE)  
GLAZING INDICATOR (REFER TO SPECIFICATIONS)  
ACCESSORY INDICATOR (REFER TO ADD FOR ADDITIONAL INFORMATION)  
MATERIAL INDICATOR (REFER TO SCHEDULE)  
ROOM SIGNAGE INDICATOR (REFER TO SCHEDULE)

**BUILDING ELEMENTS**  
NEW CONSTRUCTION  
NEW MASONRY CONSTRUCTION  
EXISTING TO REMAIN  
EXISTING TO BE REMOVED  
DOOR INDICATOR  
NEW DOOR TO REMAIN  
EXISTING DOOR TO REMAIN  
EXISTING DOOR AND FRAME TO BE REMOVED  
INDICATOR LINES  
CENTER LINE  
ELEVATION MARK  
MATCHLINE  
EXISTING GRD. LINE  
NEW GRD. LINE  
NEW MASONRY FACE LINE  
SEPARATION INDICATOR (SEPARATION AND OF NEW CONSTRUCTION FROM EXISTING OR REPAIRS OF EXISTING STRUCTURE)  
PROPERTY LINE INDICATOR

**ACCESSIBILITY**  
SPIN WHEELCHAIR TURNING SPACE ICCANS A117.1 - 304.3  
T-SHAPED WHEELCHAIR TURNING SPACE ICCANS A117.1 - 304.3  
CLEAR FLOOR SPACE ICCANS A117.1 - 306.3  
INTERNATIONAL SYMBOL OF ACCESSIBILITY ICCANS A117.1 - 703.6.3.1

**PROPOSED** vs **EXISTING**

Order Plans @ WIP

**Contact Information:**

**CLIENT:** HUTTON DEVELOPMENT  
706 CHERRY STREET  
CHATTANOOGA, TN 37402  
(423) 771-4459 PHONE  
CONTACT: AARON BREEDEN, VP  
EMAIL: ABREEDEN@HUTTONBUILD.COM

**DESIGN ARCHITECT & INTERIORS:** OHM ADVISORS  
209 10TH AVENUE SOUTH, SUITE 216  
NASHVILLE, TN 37203  
(615) 309-9926 PHONE  
CONTACT: JASON GIBSON  
EMAIL: JASON.GYPSON@OHM-ADVISORS.COM

**MEP & FIRE PROTECTION ENGINEER:** QUEST DESIGN GROUP, INC.  
800 WILSON PIKE CIR, SUITE 216  
BRENTWOOD, TN 37027  
(615) 309-9926 PHONE  
CONTACT: NICHOLAS PERRY  
EMAIL: NPERRY@QUESTDG.COM

**CIVIL ENGINEER:** BERRY ENGINEERS, LLC  
3565 KEITH STREET NW, SUITE 109  
CLEVELAND, TN 37312  
(423) 790-5880 PHONE  
CONTACT: BEN BERRY  
EMAIL: BEN@BERRYENGINEERS.COM

**LANDSCAPE ARCHITECT:** EDSA, INC.  
800 N. ORANGE AVE, SUITE 300  
ORLANDO, FL 32803  
(407) 425-3330 PHONE  
CONTACT: ED LINQUIST  
EMAIL: ELINQUIST@EDSAPLAN.COM

**STRUCTURAL ENGINEER:** EMC STRUCTURAL ENGINEERS, P.C.  
4525 TROUSDALE DRIVE  
NASHVILLE, TN 37204  
(615) 781-8199 PHONE  
CONTACT: MARK SAVAGE  
EMAIL: SAVAGE@EMCNASHVILLE.COM

**CONSTRUCTION MANAGER:** DEANGELIS DIAMOND  
2179 EDWARD CURD LANE, SUITE 202  
FRANKLIN, TN 37067  
(615) 922-3995 PHONE  
CONTACT: SASON GAIN  
EMAIL: JASONS@DEANGELISDIAMOND.COM