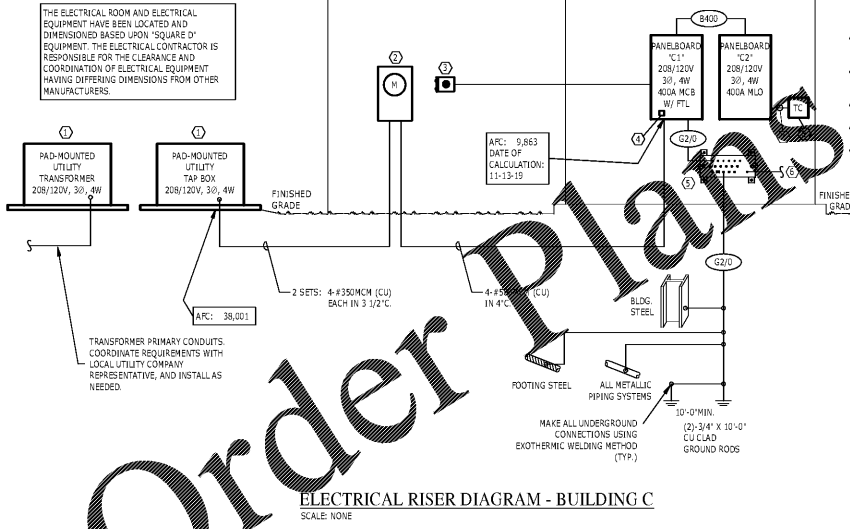


Panelboard: C				Location: STORAGE/MEDIC 100				Voltage: 120/208 Vwye				A.I.C. Rating: Main Type: Main Rating: MCB Rating: N/A			
Supply From: Mounting: SURFACE Enclosure: NEMA 1								Notes:							
Ckt	Load Name	Trips	Pole	A	B	C	Pole	Trips	Load Name	Ckt	A	B	C		
1	IBB Quads	20 A	1	0.29	1.72	---	---	---	Storage Mechanical Receptacles	2	---	---	---		
3	Breakroom Above Counter Receptacles	20 A	1	0.72	1.00	---	---	---	Dishwasher	4	---	---	---		
5	Refrigerator	20 A	1	---	---	0.50	2.00	2	Water Heater	5	---	---	---		
7	Manager Office Receptacles	20 A	1	8.00	2.00	---	---	---	---	6	---	---	---		
9	Assistant Office Receptacles	20 A	1	0.72	0.54	---	---	---	Lobby Receptacles	10	---	---	---		
11	Lobby Receptacles	20 A	1	---	---	0.38	1.00	1	Meeting Receptacles	12	---	---	---		
13	Drinking Fountain	20 A	1	4.50	1.54	---	---	---	Fitness Receptacles	14	---	---	---		
15	Fitness Receptacles	20 A	1	---	0.54	1.50	---	---	Fitness Equipment	16	---	---	---		
17	Fitness Equipment	20 A	1	---	---	1.50	1.50	1	Fitness Equipment	18	---	---	---		
19	Fitness Equipment	20 A	1	---	---	---	---	---	Fitness Equipment	20	---	---	---		
21	Fitness Equipment	20 A	1	1.50	0.72	---	---	1	Restroom Receptacles	21	---	---	---		
23	Lounge Receptacles	20 A	1	---	---	0.54	1.50	1	Lounge Game Equipment	24	---	---	---		
25	Lounge Game Equipment	20 A	1	1.50	1.50	---	---	---	Lounge Game Equipment	25	---	---	---		
27	Lounge Game Equipment	20 A	1	1.50	1.50	---	---	1	Lounge Game Equipment	28	---	---	---		
31	Water cooler	20 A	1	---	---	1.50	0.72	1	Lounge Receptacles Above Counter	30	---	---	---		
33	Lounge Receptacles	20 A	1	---	---	---	---	---	Lounge Receptacles	31	---	---	---		
35	Time Clock	20 A	1	0.30	0.00	---	---	1	Fitness Intra Exhaust Fan	32	---	---	---		
37	Fitness Area Lighting	20 A	1	1.19	0.34	0.50	0.40	1	Office Area Corridor/Conference Lighting	33	---	---	---		
39	Lounge Lighting	20 A	1	0.62	0.00	---	---	1	Office Area Corridor/Conference Lighting	34	---	---	---		
41	LIC Refrigerator	20 A	1	---	---	0.28	0.18	3	Exterior Lighting	40	---	---	---		
42	HVAC RTU-1	70 A	3	8.18	8.18	---	---	---	HVAC RTU-1	41	---	---	---		
43	---	---	---	---	---	---	---	---	HVAC RTU-1	42	---	---	---		
45	---	---	---	---	---	---	---	---	HVAC RTU-4	43	---	---	---		
47	---	---	---	---	---	---	---	---	HVAC RTU-4	44	---	---	---		
49	HVAC RTU-3	45 A	2	4.08	4.08	---	---	2	Podium Conventional Outlet	50	---	---	---		
51	---	---	---	4.48	---	---	---	---	Podium Conventional Outlet	51	---	---	---		
53	---	---	---	---	---	---	---	1	Podium Conventional Outlet	52	---	---	---		
55	---	---	---	---	---	---	---	---	Podium Conventional Outlet	53	---	---	---		
56	---	---	---	---	---	---	---	---	Podium Conventional Outlet	54	---	---	---		
57	---	---	---	---	---	---	---	---	Podium Conventional Outlet	55	---	---	---		
59	---	---	---	---	---	---	---	---	Podium Conventional Outlet	56	---	---	---		
61	---	---	---	---	---	---	---	---	Podium Conventional Outlet	57	---	---	---		
62	---	---	---	---	---	---	---	---	Podium Conventional Outlet	58	---	---	---		
63	---	---	---	---	---	---	---	---	Podium Conventional Outlet	59	---	---	---		
65	---	---	---	---	---	---	---	---	Podium Conventional Outlet	60	---	---	---		
67	---	---	---	---	---	---	---	---	Podium Conventional Outlet	61	---	---	---		
69	---	---	---	---	---	---	---	---	Podium Conventional Outlet	62	---	---	---		
71	---	---	---	---	---	---	---	---	Podium Conventional Outlet	63	---	---	---		
73	---	---	---	---	---	---	---	---	Podium Conventional Outlet	64	---	---	---		
75	---	---	---	---	---	---	---	---	Podium Conventional Outlet	65	---	---	---		
77	---	---	---	---	---	---	---	---	Podium Conventional Outlet	66	---	---	---		
79	---	---	---	---	---	---	---	---	Podium Conventional Outlet	67	---	---	---		
81	---	---	---	---	---	---	---	---	Podium Conventional Outlet	68	---	---	---		
83	---	---	---	---	---	---	---	---	Podium Conventional Outlet	69	---	---	---		
85	---	---	---	---	---	---	---	---	Podium Conventional Outlet	70	---	---	---		
<b>Total Load</b>				<b>38.09</b>	<b>33.89</b>	<b>32.75</b>	<b>kVA</b>	<b>Total Amps</b>				<b>316.79</b>	<b>287.43</b>	<b>278.34</b>	<b>AMPS</b>

SERVICE EQUIPMENT SHALL BE MARKED TO INDICATE THE MAXIMUM AVAILABLE FAULT CURRENT AS REQUIRED BY 2014 NEC SECTION 110.24. THE FIELD MARKING(S) SHALL INCLUDE THE DATE THE FAULT CURRENT CALCULATION WAS PERFORMED AND BE OF SUFFICIENT DURABILITY TO WITHSTAND THE ENVIRONMENT INVOLVED. ELECTRICAL CONTRACTOR SHALL REQUEST A DATED LETTER WITH FAULT CURRENT INFORMATION FROM THE LOCAL UTILITY AND NOTIFY THE ENGINEER OF RECORD IF THE RESULTING AFC IS GREATER THAN INDICATED ON RISER DIAGRAM.



ELECTRICAL RISER DIAGRAM - BUILDING C  
SCALE: NONE

- ① VERIFY NOTES - ELECTRICAL RISER DIAGRAM.
- ② COORDINATE LOCATION AND REQUIREMENTS WITH LOCAL UTILITY AGENCY.
- ③ UTILITY METER MOUNTED TO BUILDING EXTERIOR, COORDINATE LOCATION AND REQUIREMENTS WITH LOCAL UTILITY AGENCY PRIOR TO ROUGH-IN.
- ④ SHUNT-TRIP WEATHER-RESISTANT PUSH-BUTTON AND ENCLOSURE, GLASS BREAK PROTECTIVE DEVICES, SHALL BE 1/2" MIN. NIP WITH NIS OPERATOR. PUSH-BUTTON SHALL BE ACCESSIBLE TO THE FIRE DEPARTMENT. COORDINATE LOCATION WITH AHA. PROVIDE PERMANENT LABEL SUITABLE FOR EXTERIOR USE.
- ⑤ LARGE PROTECTIVE DEVICE: PQ PROTECTION "RM200" (OR APPROVED EQUAL).
- ⑥ PROVIDE SINGLE COPPER GROUND BUSBAR SIZED AS REQUIRED FOR THE SERVICE AND INSTALLATIONS.
- ⑦ (1) ALL TO THE GROUND BUSBAR.
- ⑧ UNSWITCHED BRANCH CIRCUIT CONDUCTORS.
- ⑨ TIMELOCK EQUAL TO INTERMATIC ET SERIES, ELECTRONIC/ASTRONOMIC. REFER TO SCHEDULE, ON THIS SHEET FOR NUMBER OF CIRCUITS.

MANUFACTURER	DESCRIPTION	FINISH	SIZE	LOCATION
DMF Lighting	DCCC Apex LED Cylinder	white	12" (4"DIA)	Clubhouse deck suspended pendant
DMF Lighting	DRD4 & ROUND Adjustable recessed LED downlight (FLOOD)	white	4"	Clubhouse- downlight
DMF Lighting	DRD4 & ROUND Adjustable recessed LED downlight (SPOT)	white	4"	Clubhouse-downlight
WAC Lighting	InvisiLED Classic 12V LED Tape Light (Color-White)	see spec	5'	Clubhouse- lobby recessed soffit / lounge (below island)
Modern Forms	WS-3111 - Vogue sconce	Chrome	15"	CLUBHOUSE - lounge sconce
Illumini	Kilo	silver anodized	116"	CLUBHOUSE - GYM linear fixture
WAC Lighting	dweLED Espirit Bathroom Sconce 3000K	chrome	15"	CLUBHOUSE - restroom sconce
Bruck Lighting	WEP Light Simona (1 fixture)	Ash (inside and outside)	48"	Clubhouse Lobby
Bruck Lighting	IWEP Lora (5 fixtures)	Grey Oak (outside) Ash (inside)	31 1/2"	Clubhouse Lounge
WAC Lighting	dweLED Volo (1 fixture)	Brushed Aluminum	54"	Clubhouse Meeting Room
WAC Lighting	Asymmetrical Recessed Channel 8' Linear		8'	Clubhouse Lounge Linear recessed light
Eaton Lighting	Egress Sconce ISC			Clubhouse Exterior
Eaton Lighting	Exit Sign, Green Lettering, ES Series			Clubhouse
Eaton Lighting	Emergency Light, AEL 2			Clubhouse

REFER TO ARCHITECTURAL REFLECTED CEILING PLANS FOR ADDITIONAL INFORMATION ON FIXTURE LOCATIONS AND FIXTURE TYPES

COPPER CONDUCTOR AND CONDUIT SCHEDULE				
3-C.P.D. <sup>11</sup> AWG/RATE	SYMBOL*	3 WIRE WITH GROUND (2P W/ NEUTRAL) OR (3P)	4 WIRE WITH GROUND (3P W/ NEUTRAL)	
20A	A20	3-#12, #12G, IN 3/4"	B20	4-#12, #12G, IN 3/4"
25A	A25	3-#10, #10G, IN 3/4"	B25	4-#10, #10G, IN 3/4"
30A	A30	3-#10, #10G, IN 1"	B30	4-#10, #10G, IN 1"
35A	A35	3-#8, #10G, IN 1"	B35	4-#8, #10G, IN 1"
40A	A40	3-#8, #10G, IN 1"	B40	4-#8, #10G, IN 1"
45A	A45	3-#8, #10G, IN 1"	B45	4-#8, #10G, IN 1"
50A	A50	3-#8, #10G, IN 1"	B50	4-#8, #10G, IN 1"
60A	A60	3-#6, #8G, IN 1 1/4"	B60	4-#6, #8G, IN 1 1/4"
70A	A70	3-#6, #8G, IN 1 1/4"	B70	4-#6, #8G, IN 1 1/4"
75A	A75	3-#4, #6G, IN 1 1/4"	B75	4-#4, #6G, IN 1 1/4"
80A	A80	3-#4, #6G, IN 1 1/4"	B80	4-#4, #6G, IN 1 1/4"
85A	A85	3-#3, #6G, IN 1 1/4"	B85	4-#3, #6G, IN 1 1/4"
100A	A100	3-#3, #6G, IN 1 1/4"	B100	4-#3, #6G, IN 1 1/4"
110A	A110	3-#2, #6G, IN 1 1/2"	B110	4-#2, #6G, IN 1 1/2"
125A	A125	3-#1, #6G, IN 2"	B125	4-#1, #6G, IN 2"
150A	A150	3-#1/0, #6G, IN 2"	B150	4-#1/0, #6G, IN 2"
175A	A175	3-#2/0, #6G, IN 2"	B175	4-#2/0, #6G, IN 2 1/2"
200A	A200	3-#3/0, #6G, IN 2 1/2"	B200	4-#3/0, #6G, IN 3 1/2"
225A	A225	3-#4/0, #6G, IN 2 1/2"	B225	4-#4/0, #6G, IN 3"
250A	A250	3-#250MCM, #6G, IN 3"	B250	4-#250MCM, #6G, IN 3"
300A	A300	3-#350MCM, #6G, IN 3"	B300	4-#350MCM, #6G, IN 3 1/2"
350A	A350	3-#400MCM, #6G, IN 3"	B350	4-#400MCM, #6G, IN 3 1/2"
400A	A400	3-#500MCM, #6G, IN 3 1/2"	B400	4-#500MCM, #6G, IN 4"
450A	A450	2 SETS: 3-#4/0, #2G BACH IN 2 1/2"	B450	2 SETS: 4-#4/0, #2G BACH IN 2 1/2"
500A	A500	2 SETS: 3-#250MCM, #2G BACH IN 3"	B500	2 SETS: 4-#250MCM, #2G BACH IN 3"
600A	A600	2 SETS: 3-#350MCM, #1/0G BACH IN 3"	B600	2 SETS: 4-#350MCM, #1/0G BACH IN 3"
700A	A700	2 SETS: 3-#400MCM, #1/0G BACH IN 3 1/2"	B700	2 SETS: 4-#400MCM, #1/0G BACH IN 4"
800A	A800	2 SETS: 3-#500MCM, #1/0G BACH IN 3 1/2"	B800	2 SETS: 4-#500MCM, #1/0G BACH IN 4"
1000A	A1000	3 SETS: 3-#400MCM, #2/0G BACH IN 3"	B1000	3 SETS: 4-#400MCM, #2/0G BACH IN 3 1/2"
1200A	A1200	4 SETS: 3-#350MCM, #3/0G BACH IN 3"	B1200	4 SETS: 4-#350MCM, #3/0G BACH IN 3 1/2"
1600A	A1600	5 SETS: 3-#400MCM, #4/0G BACH IN 3"	B1600	5 SETS: 4-#400MCM, #4/0G BACH IN 3 1/2"
2000A	A2000	6 SETS: 3-#400MCM, #250MCM G BACH IN 3 1/2"	B2000	6 SETS: 4-#400MCM, #250MCM G BACH IN 3 1/2"
2200A	A2200	6 SETS: 3-#500MCM, #350MCM G BACH IN 3 1/2"	B2200	6 SETS: 4-#500MCM, #350MCM G BACH IN 4"
2500A	A2500	7 SETS: 3-#500MCM, #350MCM G BACH IN 3 1/2"	B2500	7 SETS: 4-#500MCM, #350MCM G BACH IN 4"
3000A	A3000	8 SETS: 3-#500MCM, #400MCM G BACH IN 3 1/2"	B3000	8 SETS: 4-#500MCM, #400MCM G BACH IN 4"
G1/G		1-#1/0 G IN 1"	G3/G	1-#3/0 G IN 1"

\* UNDERLINED TEXT WITHIN A SYMBOL, INDICATES NO GROUND WIRE FOR SVC. FEEDER OR NO NEUTRAL FOR MOTOR LOAD.  
\*\* OVER CURRENT PROTECTIVE DEVICE

NOTES:  
1. FOR SINGLE PHASE CIRCUITS, INCREASE WIRE SIZE FOR EACH 100' OF CIRCUIT LENGTH. FOR THREE PHASE CIRCUITS, INCREASE WIRE SIZE FOR EACH 200' OF CIRCUIT LENGTH. (ADJUST CONDUIT AS REQ'D).  
2. VOLTAGE DROP: THE CONDUCTORS FOR FEEDERS AND BRANCH CIRCUITS COMBINED SHALL BE SIZED FOR A MAXIMUM OF 5 PERCENT VOLTAGE DROP TOTAL, IN ACCORDANCE WITH THE FLORIDA BUILDING CODE - ENERGY CONSERVATION, SECTION 6.6.3. CALCULATIONS SHALL BE COMPLETED BY THE ELECTRICAL CONTRACTOR BASED ON ACTUAL FIELD INSTALLATIONS AND DISTANCES PRIOR TO ROUGH-IN.  
3. ALL UNDERGROUND AND ROOFTOP CONDUCTORS TO BE 90° C CONDUCTORS, TYPE XHHW-2 OR THWN-2. ALLOWABLE AMPACITY PER 75° C COLUMN, NEC 70 (2)(14) TABLE 310.15(B)(1).  
4. ALL CONDUCTORS SHALL BE COPPER WITH TYPE THIN INSULATION UNLESS OTHERWISE NOTED.  
5. FOR EQUIPMENT BONDING CONDUCTORS LOCATED ON THE SECONDARY SIDE OF TRANSFORMERS, REFER TO ARTICLE 250-30(4)(1) AND (2) OF NEC FOR SYSTEM BONDING AND SUPPLY SIDE BONDING JUMPER REQUIREMENTS. REFER TO ARTICLE 250.28 FOR ADDITIONAL REQUIREMENTS. SEE TABLE 250.66 FOR SIZING INFORMATION.

Order Plans

WWW.ONLINE.COM

1925 Prospect Ave.  
Orlando, FL 32814  
P (407) 661-9100  
F (407) 661-9101  
www.e-p.com

**Cabaci & Peterson**  
Architects Engineers Planners

**OHM**  
Specialty Construction Services

138100 Avenue South 3rd Floor  
Naples, FL 34109  
Tel: 813 885 2424 Fax: 813 885 1338  
OHM04210506-000

PROJECT NAME: **HUTTON DEVELOPMENT**

PROJECT NAME: **ROCKLEDGE FLATS - BUILDING C**  
1220 Baron Boulevard  
Rockledge, FL 32955

SHEET TITLE: **ELECTRICAL SCHEDULES**

Revision Schedule	Date
No.	Description

PROJECT NO: 0540150010  
DATE: 20/04/19  
DRAWN: [Signature]  
CHECKED: [Signature]  
DATE: NOV 02, 2015

**GMP PRICING SET**

E002