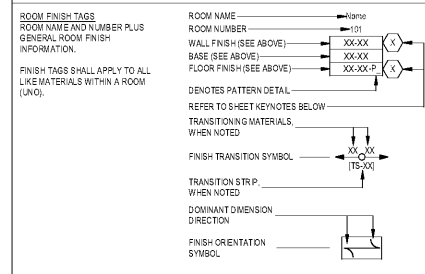


FINISH LEGEND

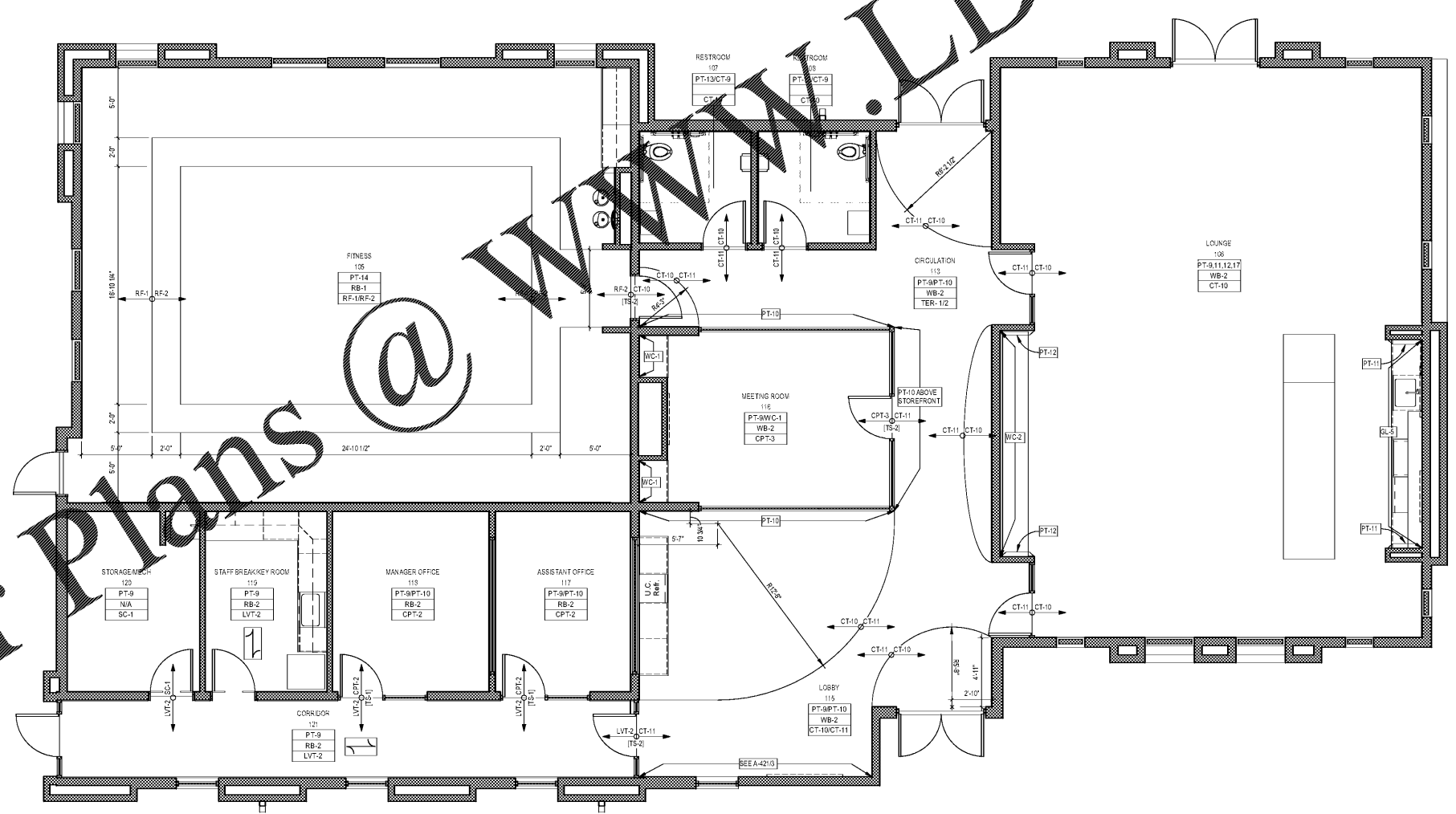
ACOUSTICAL BAFFLE	PAINT CONTINUED
AB-1 MANUFACTURER: TURF PRODUCT: STRAIGHT BAFFLE LARGE 19" COLOR: 38 MATTE GREY	PT-14 MANUFACTURER: ZOLATONE PRODUCT: FLEX PURE COLOR MATCH SHERWIN WILLIAMS SW7079 DORIAN GRAY EGGSHELL
ACOUSTICAL CEILING TILE	PT-15 MANUFACTURER: ZOLATONE PRODUCT: PURE FLEX COLOR MATCH SHERWIN WILLIAMS SW7079 DORIAN GRAY EGGSHELL
ACT-1 MANUFACTURER: ARMSTRONG CEILINGS PRODUCT: 1850 DUNE 24X24" COLOR: WHITE	PT-16 MANUFACTURER: SHERWIN WILLIAMS PRODUCT: PROMAR 200 SERIES COLOR: SW7551 GREEK VILLA FLAT
BASE	PT-17 MANUFACTURER: SHERWIN WILLIAMS PRODUCT: PROMAR 200 SERIES COLOR: SW7549 SILVERPLATE PT-15
BB-1 MANUFACTURER: JOHNSONITE PRODUCT: DURACOVE TOELESS 4" COLOR: 63 BURNT UMBER	PLAM-1 MANUFACTURER: WILSONART PRODUCT: SOLCOR T899K-12 COLOR: FIELD ELM FINISH: SOFTGRAN FINISH
BB-2 MANUFACTURER: JOHNSONITE PRODUCT: DURACOVE TOELESS 4" COLOR: 32 PEBBLE	PLAM-2 MANUFACTURER: FORMICA PRODUCT: LAMINATE-COMMERCIAL 3208-AC COLOR: SOL FINISH: MICRODOT
WB-2 MANUFACTURER: NIA PRODUCT: 4" PAINTED WOOD BASE COLOR: PT-15	PLAM-3 MANUFACTURER: WILSONART PRODUCT: TRACELESS 1550A-31 COLOR: CHARCOAL VELVET FINISH: TRACELESS
CARPET	RUBBER FLOORING
CPT-2 MANUFACTURER: SHAW CONTRACT PRODUCT: MEMORY TILE 57263 COLOR: GREIGE 4816 INSTALL: MONOLITHIC	RF-1 MANUFACTURER: REZTEC PRODUCT: STANDARD TILE 24X24" 9MM COLOR: GUNMETAL
CPT-3 MANUFACTURER: SHAW CONTRACT PRODUCT: FAMILAR TILE 57235 COLOR: GREIGE 3516 INSTALL: MONOLITHIC	RF-2 MANUFACTURER: REZTEC PRODUCT: STANDARD TILE 24X24" 9MM COLOR: ASH
CERAMIC TILE	SEALED CONCRETE
CT-3 MANUFACTURER: STONESOURCE PRODUCT: FUTURA T 6760" COLOR: MATTE WHITE NOTE: USE GR-5	SC-1 MANUFACTURER: NIA PRODUCT: SEALED CONCRETE
CT-4 MANUFACTURER: STONESOURCE PRODUCT: FUTURA DROP 6760" COLOR: MATTE BLACK NOTE: USE GR-5	SOLID SURFACE
CT-6 MANUFACTURER: STONESOURCE PRODUCT: FUTURA HALF 6760" COLOR: MATTE BLACK NOTE: USE GR-5	SS-2 MANUFACTURER: WILSONART PRODUCT: QUARTZ Q1001 (4) 3 CM COLOR: SERENE
CT-8 MANUFACTURER: STONESOURCE PRODUCT: FUTURA FIELD TILE 6760" COLOR: MATTE GREY NOTE: USE GR-5	SS-3 MANUFACTURER: WILSONART PRODUCT: QUARTZ Q4007 (2) 2 CM COLOR: DUOMO
CT-10 MANUFACTURER: STONESOURCE PRODUCT: STARBUST 3640 COLOR: NEBULA MATTE NOTE: USE GR-3	TRANSITION STRIP
CT-11 MANUFACTURER: STONESOURCE PRODUCT: STARBUST 3640 COLOR: MOON MATTE NOTE: USE GR-3	TB-1 MANUFACTURER: TANDUO CENTRA PRODUCT: METALEDGE 001 COLOR: 179 STEEL NOTE: LVT TO CPT
DECORATIVE METAL	TB-2 MANUFACTURER: SCHLUTER PRODUCT: RENO-4 NOTE: CT TO LVT & CT TO CPT
DM-1 MANUFACTURER: FORMICA PRODUCT: DECOMETAL M5306 COLOR: PLEX ARGENT	TRIM
DM-2 MANUFACTURER: WILSONART PRODUCT: DECORATIVE METAL 637 COLOR: ALUMASTEEL 419	TB-2 MANUFACTURER: SCHLUTER PRODUCT: JOLLY COLOR: NICKEL FINISH: ANODIZED ALUMINUM
GLASS	WALLCOVERING
GL-5 MANUFACTURER: BENHEM PRODUCT: CHAMA-142 BACK PAINTED SW7627 SILVER-81	WC-1 MANUFACTURER: FLAVOR PAPER PRODUCT: TUNNEL VISION COLOR: DOLPHIN FINISH: IVORY CLAY COATED PAPER
GR-1 MANUFACTURER: LATICRETE PRODUCT: PERMACOLOR COLOR: T80	WC-2 MANUFACTURER: NATIONAL WALLCOVERING PRODUCT: COMMAND-SHOOTING STAR CM104-2177 SUPERNOVA
GR-4 MANUFACTURER: MAPEI PRODUCT: FLEXCOLOR 3D COLOR: Z10 FOREVER SKY	PERFORATED METAL
GR-6 MANUFACTURER: LATICRETE PRODUCT: PERMACOLOR COLOR: T80	PM-1 MANUFACTURER: MONICHOOLS PRODUCT: 176427325A PERFORATED HEX PATTERN ALUMINUM TYPE 3003-H14 FINISH: MLL FINISH .032 GAUGE 1/4" HOLES ON 3/32" CENTERS
LUXURY VINYL TILE	HARDWARE
LVT-2 MANUFACTURER: SHAW CONTRACT PRODUCT: SOLTUDE 0649V COLOR: COTTONWOOD 4812D INSTALL: ASHLAR	HWR-3 MANUFACTURER: RICHELIEU PRODUCT: B9170/2890D COLOR: MATTE BLACK INSTALLATION: HORIZONTAL
PAINT	HWR-4 MANUFACTURER: HAFELE PRODUCT: SHELF SUPPORT W/ SCREW ON PLATE 283 33 304 FLOATING SHELF HARDWARE
PT-2 MANUFACTURER: ZOLATONE PRODUCT: FLEX PURE COLOR MATCH SHERWIN WILLIAMS SW7551 GREEK VILLA EGGSHELL	ROLLER SHADES
PT-10 MANUFACTURER: ZOLATONE PRODUCT: FLEX PURE COLOR MATCH SHERWIN WILLIAMS SW7079 PONDER EGGSHELL	SH-1 MANUFACTURER: LUTRON PRODUCT: SIVDIA QS R54 S H BASKET LEAVE DOWN FABRIC: INSULATED ROLLER INSTALLATION: ROLLER
PT-11 MANUFACTURER: ZOLATONE PRODUCT: FLEX PURE COLOR MATCH SHERWIN WILLIAMS SW7079 PONDER EGGSHELL	DRAPERY
PT-12 MANUFACTURER: ZOLATONE PRODUCT: FLEX PURE COLOR MATCH SHERWIN WILLIAMS SW 764 PEPPERCORN EGGSHELL	DR-1 MANUFACTURER: ARCHTRAC PRODUCT: SERIES 9404 BATON DRAW COLOR: BLACK NOTE: ONE-WAY DRAW CEILING MOUNT MEETING ROOM 116 RECESSED CEILING
PT-13 MANUFACTURER: SHERWIN WILLIAMS PRODUCT: PROMAR 200 SERIES COLOR: SW7820 SEAWORTHY FINISH: SEMI-GLOSS	

FINISH SYMBOLS



GENERAL FINISH PLAN NOTES

- ALL PARTIES RESPONSIBLE FOR DELIVERING FINISHES TO THE SITE SHOULD CHECK QUANTITIES AND DELIVERY DATES AS SOON AS SO. IT IS THE DIRECT RESPONSIBILITY OF THE CONTRACTOR TO SECURE FINISH ORDERS TO ELIMINATE THE NEED FOR RESELECTION OR ADDITIONAL SHIPPING EXPENSES.
- ITEMS REQUIRING FINISH SELECTION THAT DO NOT APPEAR ON THE FINISH DOCUMENTS SHALL BE SELECTED FROM SHOP DRAWINGS, SUBMITTALS AND/OR SAMPLES AS REQUIRED BY ARCHITECTURAL SPECIFICATIONS.
- CHANGES OF LEVELS BETWEEN FLOORING MATERIALS TO BE NO GREATER THAN 1/4" UNO.
- SAVE ALL CARPET, TILE, BASE AND WALLCOVERING USABLE SCRAPS. STORE IN A SPACE TO BE SELECTED BY OWNER. WRAP ITEMS FOR STORAGE IN A PROTECTIVE COVERING CLEARLY MARKING THE CONTENTS. COORDINATE WITH OWNER'S REPRESENTATIVE.
- PROVIDE THE OWNER WITH A MAINTENANCE MANUAL OF MANUFACTURER'S RECOMMENDED ROUTINE AND SPECIAL MAINTENANCE INSTRUCTIONS FOR EACH ITEM.
- ALL FINISH MATERIALS ARE TO BE SUPPLIED FROM (1) DYE LOT OR COLOR BATCH PER ITEM, INCLUDING BUT NOT LIMITED TO CARPET, TILE, PAINT AND WALL COVERING.
- INSTALL ALL MANUFACTURED ITEMS, FINISH MATERIALS AND EQUIPMENT IN STRICT ACCORDANCE WITH THE MANUFACTURER'S RECOMMENDED INSTRUCTIONS.
- THE MINIMUM FLAME SPREAD CLASSIFICATION OF ALL INTERIOR FINISHES SHALL BE CLASS C INTERIOR FINISH (FLAME SPREAD 75-200, SMOKE DEVELOPED 250, 200, 200, 200, 200).
- FLOORING TRANSITIONS TO OCCUR AT THE CENTERLINE OF THE FLOOR, UNO.
- PROVIDE ALUMINUM SCREWER STRIPS AT HARD SURFACE FLOORING TRANSITIONS.
- SEE REFLECTED CEILING FINISH MATERIAL LOCATIONS AND HEIGHTS.
- WOOD DOORS TO BE A HIGH-GRADE HFT-CUT BRCH.
- PROVIDE A PROGRAM TO ARCHITECT FOR ALL FLOORING MATERIALS.
- PAINT ALL CEILINGS & SOFFITS PT-16, UNO. WHERE REVEAL OCCURS & PT-15 IS ABOVE, PAINT THE REVEAL PT-16.
- COORDINATE SURFACE OF WALLS TO RECEIVE DARK PAINT TO BE FINISHED TO A HIGH STANDARD SO AS NOT TO REFLECT IMPERFECTIONS IN WALL CONSTRUCTION OR FINISHING.
- PROVIDE WINDOW SHADES ON ALL WINDOWS. SHADES TO BE SELECTED BY ARCHITECT AND SUBMITTED TO OWNER AND CONTRACTOR FOR APPROVAL.
- COORDINATE LEAD TIMES FOR ALL REQUIRED LAMINATE FINISHES WITH TOILET PARTITIONS AND MILLWORK INSTALLATIONS.
- ALL MATERIAL TO BE INSTALLED IN ACCORDANCE WITH MANUFACTURER'S WRITTEN INSTRUCTIONS.
- PAINT ALL EXPOSED COLUMNS ACCORDING TO ROOM DESIGNATED COLOR, UNO.
- ALL HARDWARE TO BE (HWR-3) UNLESS OTHERWISE NOTED.



1 FLOOR 1 - FINISH PLAN
1/8" = 1'-0"

Order Plans @ www.LDILine.com

1925 Prospect Ave.
Orlando, FL 32814
P (407) 661-9100
F (407) 661-9101
www.lpi.com



CLIENT NAME
HUTTON DEVELOPMENT
756 Cherry Street
Chattanooga, TN 37402

PROJECT NAME
ROCKLEDGE FLATS - BUILDING C
220 Barton Boulevard
Rockledge, FL 32955

SHEET TITLE
FLOOR 1 FINISH PLAN

Revision Schedule	
No.	Description

PROJECT NO. 21002
DATE 20/01/10
DRAWN
CHECKED
NOV 03, 2015

A-801

GMP PRICING SET 15 NOVEMBER 2019