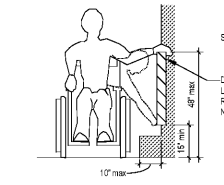
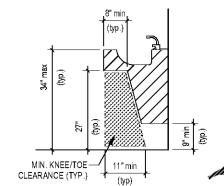


PROJECTION LIMITATIONS  
3/8" = 1/4"

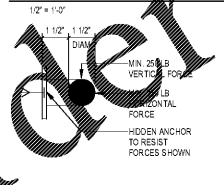


REACH LIMITATIONS  
3/8" = 1/4"

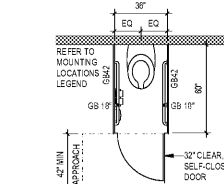


SINK IN CABINET

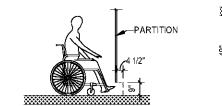
KNEE & TOE CLEARANCE @ FIXTURES AND WORK SURFACES  
1/2" = 1/4"



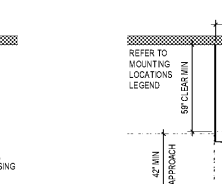
TYPICAL GRAB BAR DETAIL  
3/8" = 1/4"



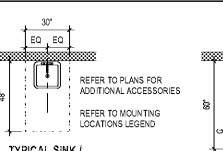
TYPICAL AMBULATORY STALL  
1/4" = 1/4"



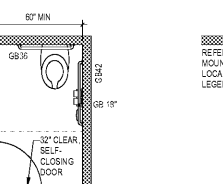
TYPICAL TOE CLEARANCE  
1/4" = 1/4"



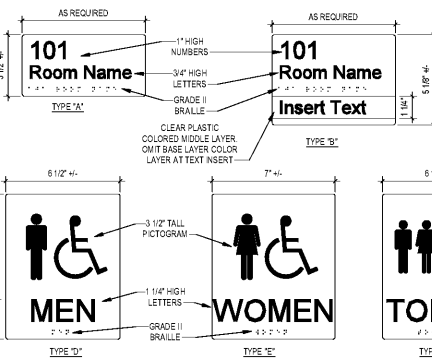
ALTERNATE ACCESSIBLE STALL  
1/4" = 1/4"



TYPICAL SINK / DRINKING FOUNTAIN / URINAL  
1/4" = 1/4"

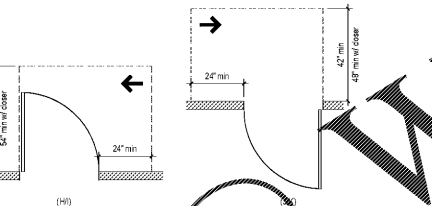


TYPICAL STALL  
1/4" = 1/4"



1. SIGN MATERIAL SHALL BE METRIC STD NON-GLARE W/ COLORED BACKGROUND.
2. LETTERS SHALL BE RAISED 1/32".
3. PICTOGRAMS AND LETTERS SHALL BE CONTRASTING COLOR.
4. COMPLY WITH CABO/ANSI A117.1-2009 SECTION 703 SIGNAGE.

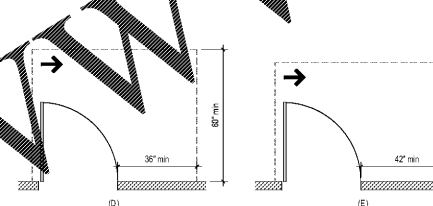
SIGNAGE LEGEND  
3/8" = 1/4"



LATCH APPROACH



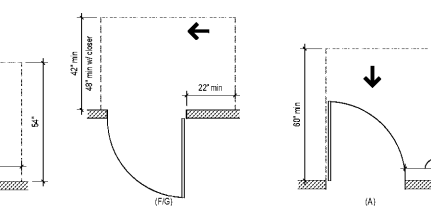
HINGE APPROACH  
3/8" = 1/4"



HINGE APPROACH



HINGE APPROACH



FRONT APPROACH



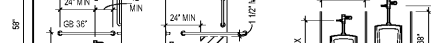
FRONT APPROACH



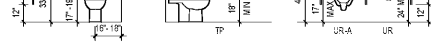
FRONT APPROACH



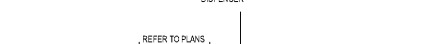
FRONT APPROACH



FRONT APPROACH



FRONT APPROACH



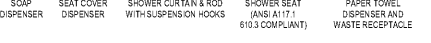
FRONT APPROACH



FRONT APPROACH



FRONT APPROACH



FRONT APPROACH



FRONT APPROACH



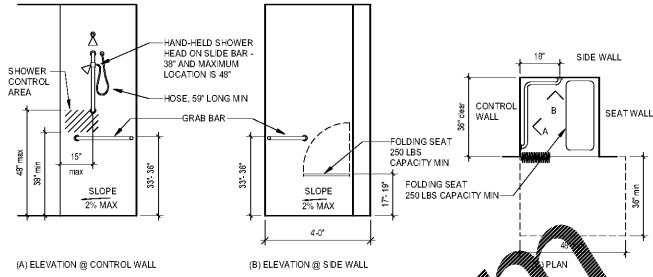
FRONT APPROACH



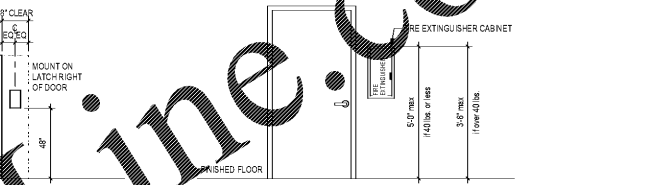
FRONT APPROACH



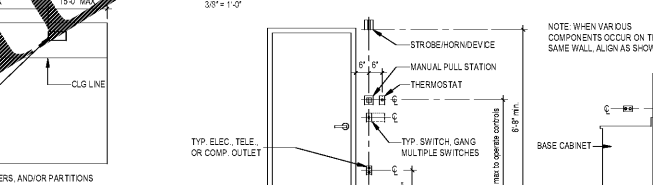
FRONT APPROACH



TRANSFER SHOWER  
3/8" = 1/4"



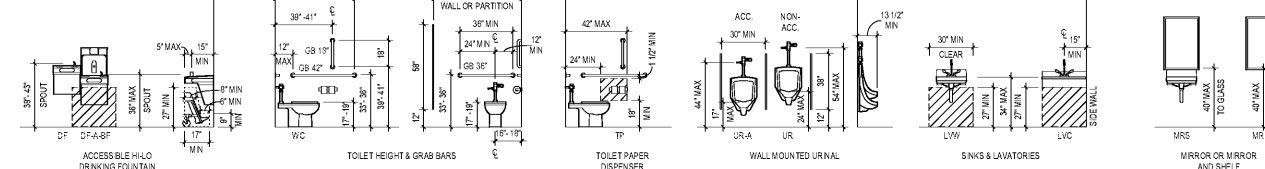
FIRE EXTINGUISHER MOUNTING  
3/8" = 1/4"



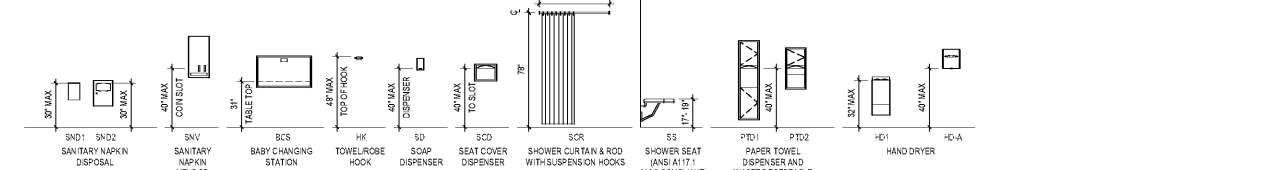
MISCELLANEOUS MOUNTING HEIGHTS  
3/8" = 1/4"

GENERAL NOTES:

1. COMPLY WITH THE STATE BUILDING CODE, ANSI 117.1, AND THE AMERICANS WITH DISABILITIES ACT.
2. PROVIDE BLOCKING BEHIND TOILET ACCESSORS FOR SECURE MOUNTING TO WITHSTAND 250# VERTICAL AND HORIZONTAL FORCE.



TYPICAL MOUNTING LOCATIONS  
1/4" = 1/4"



TYPICAL MOUNTING LOCATIONS  
1/4" = 1/4"



TYPICAL MOUNTING LOCATIONS  
1/4" = 1/4"

Order Plans @

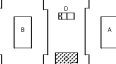
1925 Prospect Ave.  
Orlando, FL 32814  
P (407) 661-9100  
F (407) 661-9101  
www.r.p.c.com

Architects  
Engineers  
Planners

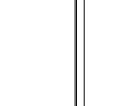
OHM

Architects  
Engineers  
Planners

SITE KEY:



SITE KEY



SITE KEY

HUTTON DEVELOPMENT  
756 Cherry Street  
Chattanooga, TN 37402

CLIENT NAME  
HUTTON DEVELOPMENT  
756 Cherry Street  
Chattanooga, TN 37402

PROJECT NAME  
ROCKLEDGE FLATS - BUILDING C  
220 Barton Boulevard  
Rockledge, FL 32955

SHEET TITLE  
TYPICAL MOUNTING HEIGHTS & CLEARANCES

NOV 02, 2015

NOV 02, 2015

Revision Schedule

PROJECT NO.  
21002  
DATE  
20/11/10  
DRAWN  
N/A  
CHECKED  
C/cher

G-010

GMP PRICING SET 15 NOVEMBER 2019