

ROCKLEDGE FLATS - BUILDING C

220 Barton Boulevard
Rockledge, FL 32955

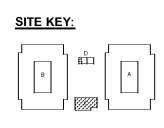
GMP PRICING SET 15 NOVEMBER 2019

1925 Prospect Ave.
Orlando, FL 32814
P (407) 661-9100
F (407) 661-9101
www.c-p.com

Cuhaci & Peterson
Architects & Planners

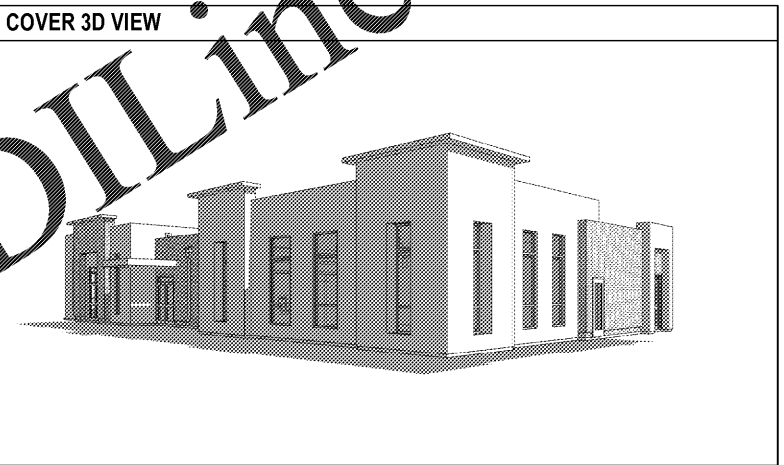
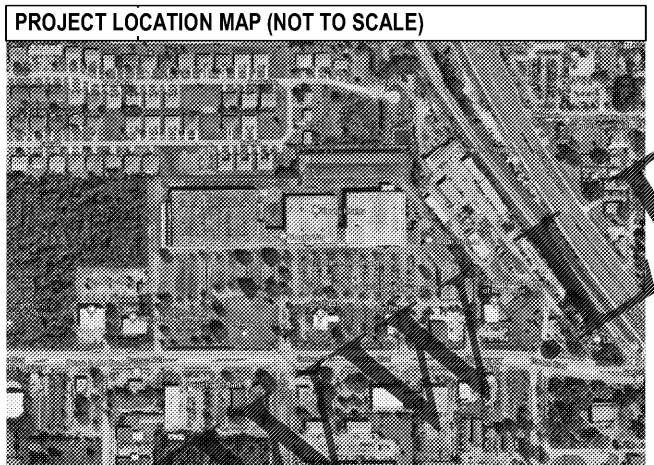
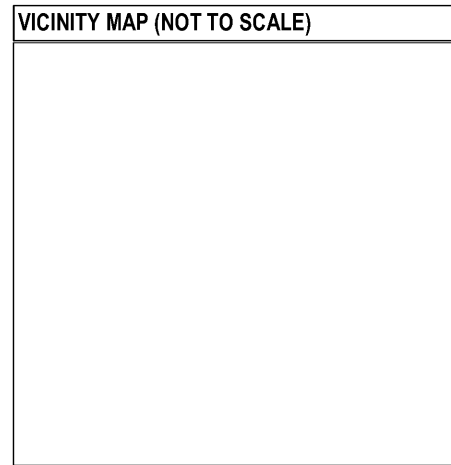


ROCKLEDGE FLATS - BUILDING C
220 Barton Boulevard
Rockledge, FL 32955
GMP PRICING SET 15 NOVEMBER 2019



2190472

NUMBER	SHEET NAME
GENERAL	
G-000	COVER
G-001	ARCHITECTURAL NOTES AND SYMBOLS
G-002	3D VIEWS
G-010	TYPICAL MOUNTING HEIGHTS & CLEARANCES
G-020	RATED ASSEMBLIES
G-030	LIFE SAFETY
STRUCTURAL	
S-001	GENERAL NOTES
S-002	QUALITY ASSURANCE
S-111C	FOUNDATION PLAN - CLUBHOUSE
S-112C	ROOF FRAMING PLAN - CLUBHOUSE
S-201	SECTIONS AND DETAILS
S-301	FRAMING DETAILS
ARCHITECTURAL	
A-101	FLOOR 1 PLAN
A-102	ROOF PLAN
A-201	EXTERIOR ELEVATIONS
A-211	BUILDING SECTIONS
A-301	WALL SECTIONS
A-302	WALL SECTIONS
A-303	CANOPY
A-421	INTERIOR ELEVATIONS
A-422	INTERIOR ELEVATIONS
A-423	INTERIOR ELEVATIONS
A-501	TYPICAL DETAILS
A-502	PLAN DETAILS
A-511	SECTION/ELEVATION DETAILS
A-521	ROOF DETAILS
A-531	INTERIOR DETAILS
A-541	CASEWORK DETAILS
A-581	DOOR AND WINDOW SCHEDULES AND DETAILS
A-611	WINDOW STOREFRONT SCHEDULE AND DETAILS
A-701	FLOOR 1 REFLECTED CEILING PLAN
A-801	FLOOR 1 FINISH PLAN
MECHANICAL	
M-001	MECHANICAL SPECS, LEGEND & SCHEDULES
M-011	MECHANICAL FLOOR PLAN
PLUMBING	
P-001	PLUMBING SPECS, LEGEND & SCHEDULES
P-101	WATER SUPPLY FLOOR PLAN
P-201	SANITARY FLOOR PLAN
ELECTRICAL	
E-101	ELECTRICAL FLOOR PLAN
E-102	LIGHTING FLOOR PLAN

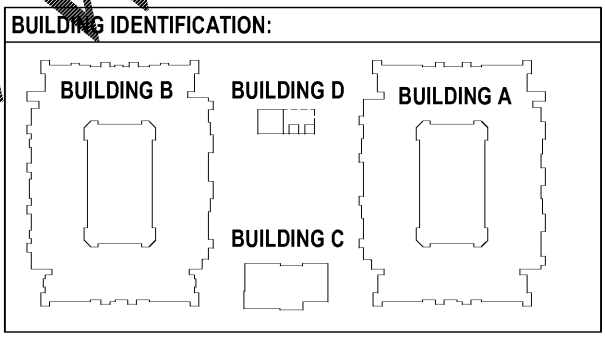


Scope of Work
THIS PROPOSED PROJECT WILL CONSIST OF A (1) STORY APARTMENT CLUBHOUSE

Project Information
JURISDICTION AUTHORITY
CITY OF ROCKLEDGE
BUILDING DIVISION
1600 HUNTINGTON LANE
ROCKLEDGE, FL 32955
(PHONE): (321) 221-7540
NUMBER OF SETS: (X) SIGNED & SEALED SETS

Code Information:
BUILDING: FLORIDA BUILDING CODE, 6TH EDITION (2017)
FIRE: FLORIDA FIRE PREVENTION CODE - 6TH EDITION (2017) (CHAPTERS 905 - (NFPA 101) & NFPA 101 W/ STATE FIRE MARSHAL AMENDMENTS) (UNIFORM FIRE ALARM AND SIGNALING CODE - 2012)
LIFE SAFETY: NFPA 101, 2012 EDITION
PLUMBING: FLORIDA BUILDING CODE, PLUMBING - 6TH EDITION (2017)
MECHANICAL: FLORIDA BUILDING CODE, MECHANICAL - 6TH EDITION (2017)
ELECTRICAL: NATIONAL ELECTRICAL CODE - (2014) CHAPTER 27 - (NFPA 70-2011, NATIONAL ELECTRIC CODE)
FUEL / GAS: FLORIDA BUILDING CODE, FUEL/GAS - 6TH EDITION (2017)
ACCESSIBILITY: FLORIDA BUILDING CODE, ACCESSIBILITY - 6TH EDITION (2017) CHAPTER 11 - (FLORIDA ACCESSIBILITY CODE FOR BUILDING CONSTRUCTION)
ENERGY: FLORIDA BUILDING CODE, ENERGY CONSERVATION - 6TH EDITION (2017)

Building Construction Data
OCCUPANCY CLASSIFICATION (FBC 310.3): ASSEMBLY GROUP, R-3
CONSTRUCTION TYPE (FBC TABLE 602): TYPE 5-B, FULLY SPRINKLED
HEIGHT - 40': HEIGHT - 40'
ACTUAL HEIGHT: HEIGHT - 18' - 6"
MAXIMUM NUMBER OF STORIES (FBC TABLE 504.4): ONE (1)
MAXIMUM NUMBER OF STORIES (FBC TABLE 504.4): ONE (1)
MAXIMUM AREA (FBC TABLE 506.2): 6,000 SQ. FT.



City, State & Fire Deferred Submittals
PLANS FOR THE DEFERRED SUBMITTAL ITEMS (LISTED BELOW) SHALL BE SUBMITTED IN A TIMELY MANNER THAT ALLOWS A MINIMUM OF 30 WORKING DAYS FOR INITIAL PLAN REVIEW. ALL COMMENTS RELATED TO THE DEFERRED SUBMITTAL MUST BE ADDRESSED TO THE SATISFACTION OF THE PLAN CHECK DIVISION PRIOR TO APPROVAL OF THE SUBMITTAL ITEMS.

- SPRINKLER SYSTEM
- FIRE ALARM SYSTEM
- SIGN PACKAGE

Florida Product Approval/Notice of Acceptance (NOA) Information						
PRODUCT CATEGORY	SUB CATEGORY	DESCRIPTION	MANUFACTURER & MODEL NUMBER (OR PRODUCT INFO)	N.O.A. #	N.O.A. EXPIRATION DATE	FL PRODUCT APPROVAL #
ROOFING	SINGLE PLY ROOF SYSTEM	PVC ROOFING SYSTEM OVER STEEL DECKS	SEAMAN CORPORATION	16-00189	JAN. 20, 2021	4801
ROOFING	CONCRETE	EDGE TERMINATION SYSTEMS	METAL, ERA, INC.	13-04-1583	DEC. 11, 2018	-
CLADDING	STOREFRONT SYSTEM	SERIES TRIRAB 403.7 ALUMINUM STOREFRONT SYSTEM	KAWNEER	-	-	1405786
CLADDING	EPS ON STUDS	OUTILATION/PLUMBING SYSTEM OVER CONCRETE/STEEL DECK	-	16-02349	FEB. 28, 2023	-
CLADDING	EPS ON CMU	OUTILATION/PLUMBING SYSTEM OVER CONCRETE/CMU	JMS, INC.	17-080713	AUG. 13, 2022	-
DOORS	BRANDING	SERIES "TRIP" TRIP	MEMBER DOOR, INC.	14-02103	JULY 16, 2020	-
LOUVERS	FIXED ALUMINUM	FIXED ALUMINUM	GREENHECKEBO	-	-	80763
LOUVERS	FIXED ALUMINUM	RIGHT PROFILE HORIZONTAL DRINKABLE	GREENHECKEBO	-	-	10288

MATERIAL SYMBOL LEGEND

CONCRETE	WOOD	RIGID INSULATION	4x4 TILE
CONCRETE MASONRY UNITS	ROUGH WOOD	WOOD BOARD SIDING NARROW	6x6 TILE
FACE BRICK	SHM	WOOD BOARD SIDING WIDE	12x12 TILE
ALUMINUM	PLYWOOD	ACOUSTICAL TILE	EARTH/COMPACT FLL
STEEL	BATT INSULATION	GYPSUM WALL BOARD	POROUS FILL GRAVEL

DRAWING SYMBOLS

VIEW REFERENCES

NOTES & ANNOTATIONS

BUILDING ELEMENTS

ACCESSIBILITY

PROPERTY LINE INDICATOR

Order Plans @ WIP

IN PROGRESS

CLIENT: HUTTON DEVELOPMENT
736 CHERRY STREET
CHATTANOOGA, TN 37402
(423) 771-4459 PHONE
CONTACT: AARON BREENEN, VP
EMAIL: ABREENEN@HUTTONBUILD

DESIGN ARCHITECT & INTERIORS: OHM ADVISORS
209 10TH AVENUE SOUTH, SUITE 216
NASHVILLE, TN 37203
(615) 309-9926 PHONE
CONTACT: JASON GIBSON
EMAIL: JGIBSON@OHM-ADVISORS.COM

MEP & FIRE PROTECTION ENGINEER: QUEST DESIGN GROUP, INC.
500 WILSON PIKE CIR, SUITE 216
BRENTWOOD, TN 37027
(615) 309-9926 PHONE
CONTACT: NICHOLAS PERRY
EMAIL: NPERRY@QUESTDSG.COM

LANDSCAPE ARCHITECT: EDSA, INC.
800 N. ORANGE AVE, SUITE 300
ORLANDO, FL 32803
(407) 425-3330 PHONE
CONTACT: ED LINQUIST
EMAIL: ELINQUIST@EDSAPLAN.COM

STRUCTURAL ENGINEER: EMC STRUCTURAL ENGINEERS, P.C.
4525 TROUSDALE DRIVE
NASHVILLE, TN 37204
(615) 781-8199 PHONE
CONTACT: MARK SAVAGE
EMAIL: SAVAGE@EMCNASHVILLE.COM

CONSTRUCTION MANAGER: DEANGELIS DIAMOND
2179 EDWARD CURD LANE, SUITE 202
FRANKLIN, TN 37057
(615) 922-3995 PHONE
CONTACT: SASON SAIN
EMAIL: JASONS@DEANGELISDIAMOND.COM

CONTACT INFORMATION:

ARCHITECT OF RECORD: CUHACI & PETERSON ARCHITECTS
1925 PROSPECT AVE
ORLANDO, FL 32814
(407) 661-9100 PHONE
CONTACT: DREW RIGGIN
EMAIL: DRIGGIN@C-P.COM