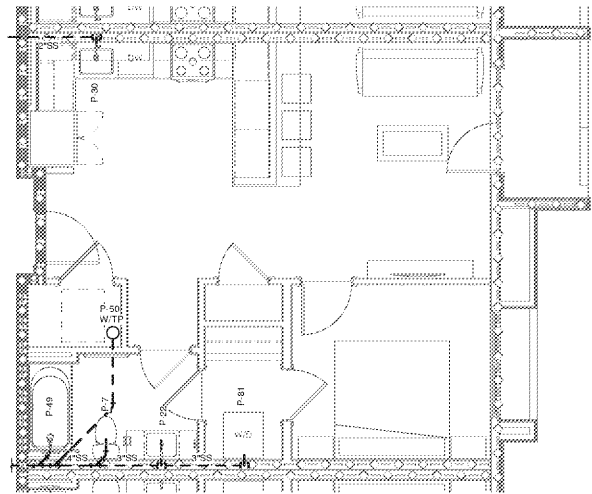
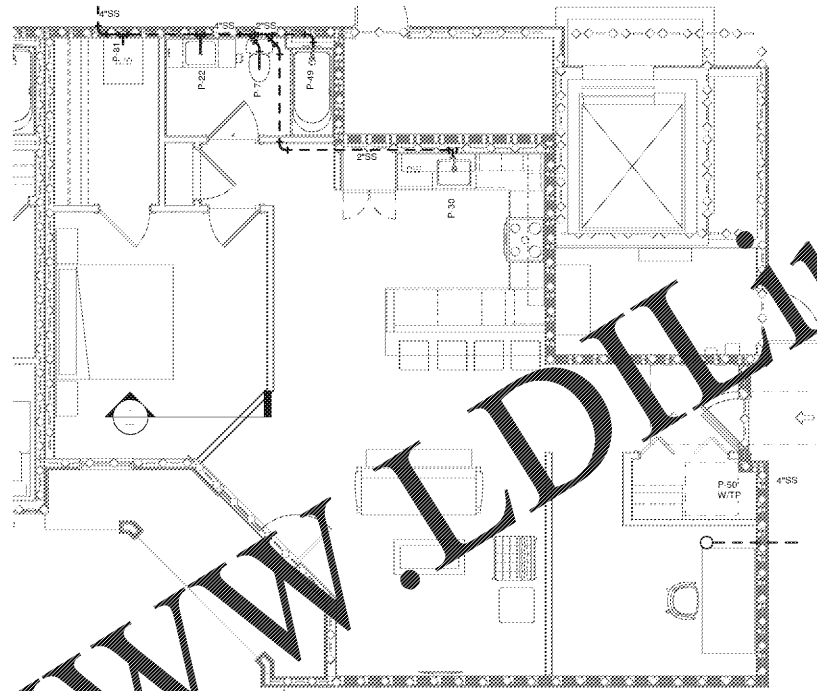


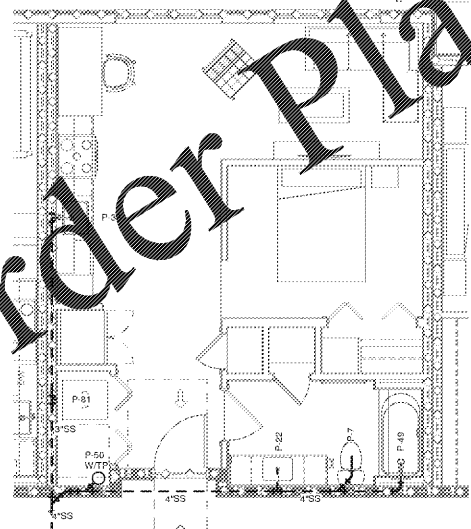
Order Plans @ [www.LDILine.com](http://www.LDILine.com)



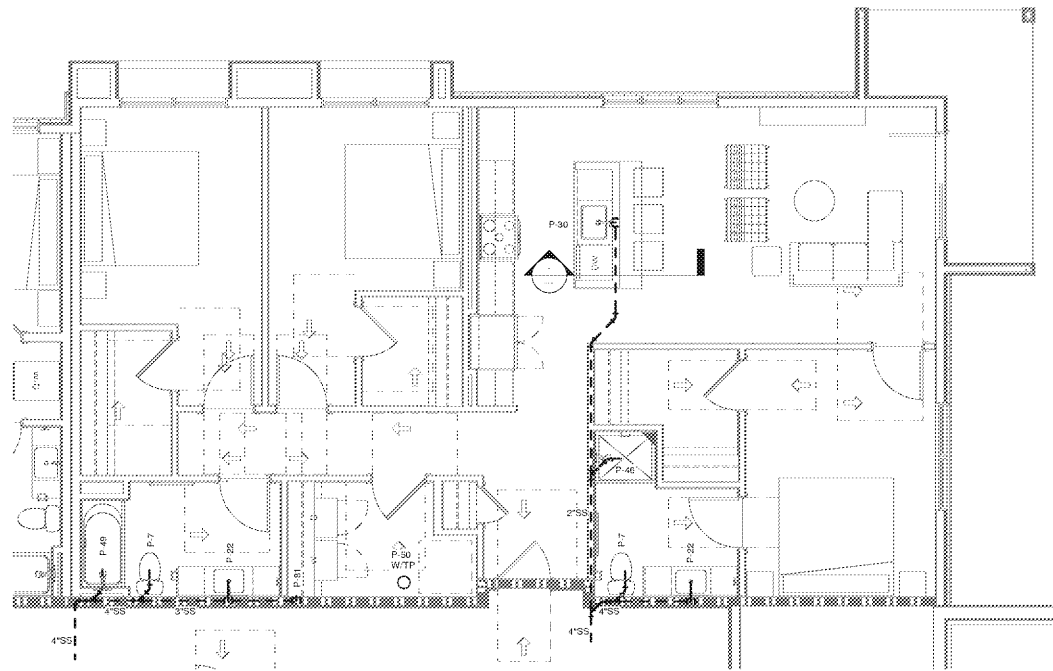
② UNIT PLAN - A1-BEDROOM SS  
1/4" = 1'-0"



④ UNIT PLAN - A2-BEDROOM SS  
1/4" = 1'-0"



③ UNIT PLAN - S1-STUDIO SS  
1/4" = 1'-0"



① UNIT PLAN - C1-BEDROOM SS  
1/4" = 1'-0"

GENERAL NOTES:  
 1. SANITARY SEWER MAIN LEAVING UNITS SHALL CONNECT TO WASTE HEADER LOCATED IN CORRIDOR. SEE OVERALL FLOOR PLAN FOR ADDITIONAL INFORMATION.

1925 Prospect Ave.  
 Ocala, FL 32814  
 P (407) 661-9100  
 F (407) 661-9101  
[www.lpi.com](http://www.lpi.com)



CLIENT NAME

PROJECT NAME  
**ROCKLEDGE MULTI-FAMILY**  
 220 Barton Boulevard  
 Rockledge, FL 32955

Revision Schedule	
No.	Description

PROJECT NO.  
 05015/010  
 DATE  
 20/01/15  
 DRAWN  
 RUPAK  
 CHECKED  
 Chander

SHEET TITLE  
**PLUMBING ENLARGED PLAN**

NOV 02, 2015

GMP PRICING SET