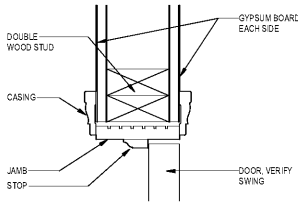
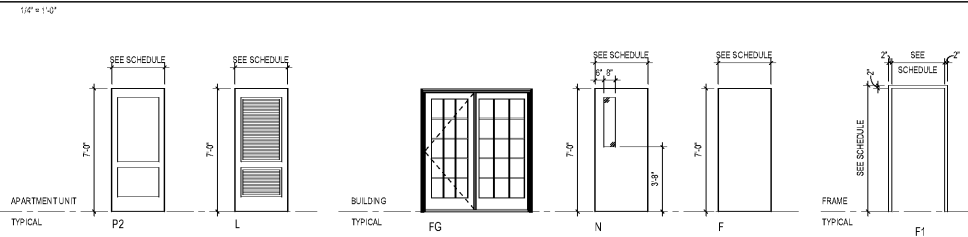
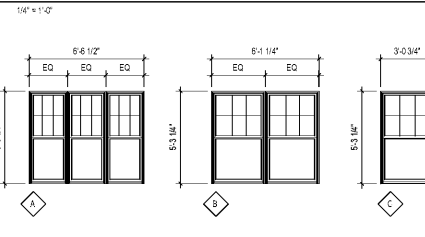


DOOR TYPES AND FRAME TYPES



1 Door_WD Head & Jamb @ WD Stud Wall
3/4" = 1'-0"

WINDOW TYPES (WINDOW NUMBERS BASED ON LAWSON)



WINDOW SCHEDULE

SCHEDULE KEY:

FRAME MATERIAL	FRAME FINISH	GLAZING TYPES	DETAILS	FIRE RATING
AL ALUMINUM	PF PRE-FINISHED	GL-2 DOUBLE PANE, CLEAR	REFER TO DETAILS AS NOTICED	IN MINUTES
CW CLAD WOOD	PTD PAINTED			
FG FIBERGLASS	STN STAINED			
PVC POLYVINYL CHLORIDE				
ST STEEL				
VL VINYL				
WD WOOD				

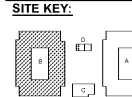
SCHEDULE NOTES:
1. CONTRACTOR SHALL VERIFY ALL PROVIDED QUANTITIES.

MARK	COUNT	SIZE		WINDOW			GLAZING			DETAIL			NOTES
		WIDTH	HEIGHT	TYPE	MAT'L	FINISH	TYPE	HEAD	JAMB	SILL			
A	18	6'-6 1/2"	5'-3 1/8"	SINGLE HUNG	ALUM	PF	GL-2						
B	20	6'-1 1/2"	5'-3 1/8"	SINGLE HUNG	ALUM	PF	GL-2						
C	34	3'-0 5/8"	5'-3 1/4"	SINGLE HUNG	ALUM	PF	GL-2						

GENERAL NOTES

- DOOR THICKNESS SHALL BE 1-3/4" U.N.O.
- UNDERCUTTING OF FIRE DOORS TO BE AS SPECIFIED IN NFPA 80 TABLE 1-1.4.
- ALL DOORS IN SMOKE BARRIERS AND FIRE RATED ASSEMBLIES SHALL BE SELF-CLOSING OR PROVIDE WITH FALL-SAFE HOLD OPEN DEVICES.
- WHEN DOORS ARE AUTOMATIC CLOSING BY SMOKE DETECTION, THE MAXIMUM DELAY FOR THE DOOR TO BEGIN CLOSING IS 10 SECONDS.
- FOR 90 MINUTE AND 60 MINUTE DOORS IN STAIRWAYS, THE AVERAGE TEMPERATURE RISE DEVELOPED ON THE UNEXPOSED SIDE SHALL NOT EXCEED 450 DEGREES (F).
- GLASS IN FIRE DOORS SHALL BE EMBEDDED IN PUTTY, AND ALL EXPOSED JOINTS BETWEEN METAL AND GLASS SHALL BE STRUCK AND POINTED.
- ALL VIEW PANELS IN FIRE DOORS SHALL BE LABELED AND SHALL HAVE A MINIMUM RATING OF 45 MINUTES PER NFPA 257.
- IN STAIRWAYS, IF SMOKE ACTIVATED CLOSERS CLOSE ONE DOOR, ALL DOORS SERVING THAT STAIRWAY SHALL BE CLOSED.
- FIRE RATED DOORS AND THE ACCOMPANYING HARDWARE, FRAMES, CLOSING DEVICES, ANCHORAGE AND SILLS SHALL BE APPROVED LISTED AND LABELED IN ACCORDANCE WITH THE REQUIREMENTS OF NFPA 80.
- COMBUSTIBLE FLOOR FINISHES HAVING A CRITICAL TEMPERATURE OF FLUX OR CHIRAZ OR LOWER SHALL NOT EXTEND UNDER FIRE RATED DOORS. SUCH DOORS SHALL HAVE MINIMUM SILLS A MINIMUM WIDTH EQUAL TO THE LAMB DEPTH OR 4 INCHES, WHICHEVER IS LESS.
- IF A DOOR IS EQUIPPED WITH A CLOSER, THE SMOKE SENSITIVE CLOSURE SHALL BE SET SO THAT FROM AN OPEN POSITION OF 70 DEGREES THE DOOR WILL TAKE AT LEAST 3 SECONDS TO MOVE TO A POINT 3 INCHES FROM THE LATCH AS MEASURED FROM THE LEADING EDGE OF THE DOOR.
- THE MAXIMUM DOOR OPENING FORCE FOR PUSHING OR PULLING OPEN AN INTERIOR HINGED DOOR OR SLIDING OR ROLLING DOORS SHALL BE 95 LBS (43 N).
- MOUNT DOOR CLOSING DEVICES 30 INCHES ABOVE FINISH FLOOR IN ELEMENTARY SCHOOLS OR OTHER STRUCTURES INTENDED PRIMARILY FOR YOUNG CHILDREN. DO NOT OVERLAP HARDWARE OVER GLASS AREAS.
- MOUNT DOOR CLOSING DEVICES BETWEEN 30 AND 42 INCHES ABOVE FINISH FLOOR FOR ALL BUILDINGS USED PRIMARILY BY ADULTS. DO NOT OVERLAP HARDWARE OVER GLASS AREAS.
- AUTOMATIC DOORS AND POWER ASSISTED DOORS SHALL NOT OPEN TO BACK CHECK FASTER THAN 3 SECONDS AND SHALL REQUIRE NO MORE THAN 15 LBF (68N) TO STOP DOOR MOVEMENT.
- SURFACE APPLIED HARDWARE SHALL BE APPLIED TO THE FACE OF DOORS WITHOUT REMOVING MATERIAL FROM THE DOOR OTHER THAN A MAXIMUM OF 1 INCH DIAMETER HOLES TO ACCOMMODATE OPERATIONAL ELEMENTS, WITH THE EXCEPTION OF CYLINDER HOLES WHICH SHALL BE MADE AS SMALL AS POSSIBLE.
- SIGNAGE ON RATED DOORS SHALL NOT EXCEED 6% OF THE AREA OF THE FACE OF THE DOOR. THEY SHALL BE ATTACHED USING ADHESIVE, SCREWS, NAILS ARE NOT PERMITTED.
- SIGNAGE SHALL NOT BE APPLIED TO GLASS AREAS OR ON THE OPERATING HARDWARE.
- KNURL ALL KNOBS OR LEVERS TO MECHANICAL ROOMS, ELECTRICAL ROOMS OR CLOSETS AND OTHER HAZARDOUS AREAS THAT MAY PROVE DANGEROUS TO THE VISUALLY IMPAIRED. FIRE EXIT STAIR DOOR HARDWARE SHALL NOT BE KNURLED.
- ALL DOORS TO BE POSITIVE LATCHING.
- MANUFACTURERS INSTALLATION INSTRUCTIONS SHALL BE AVAILABLE AT THE JOB SITE FOR ALL RATED DOOR ASSEMBLIES.

1925 Prospect Ave.
Orlando, FL 32814
P (407) 661-9100
F (407) 661-9101
www.rp.com



Order Plans @ www.LDILine.com

CLIENT NAME
HUTTON DEVELOPMENT

PROJECT NAME
ROCKLEDGE FLATS - BUILDING B
220 Baron Boulevard
Rockledge, FL 32955

SHEET TITLE
DOOR AND WINDOW SCHEDULES AND DETAILS

NOV 02, 2015

Revision Schedule	
No.	Description

PROJECT NO. 21002	DATE 20/11/15	DRAWN [Signature]	CHECKED [Signature]
----------------------	------------------	----------------------	------------------------

A-602

GMP PRICING SET 15 NOVEMBER 2019