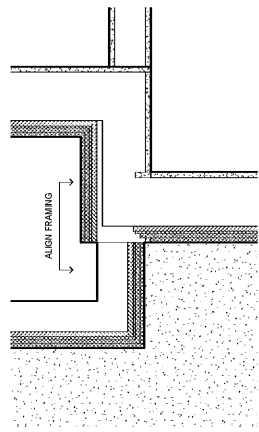
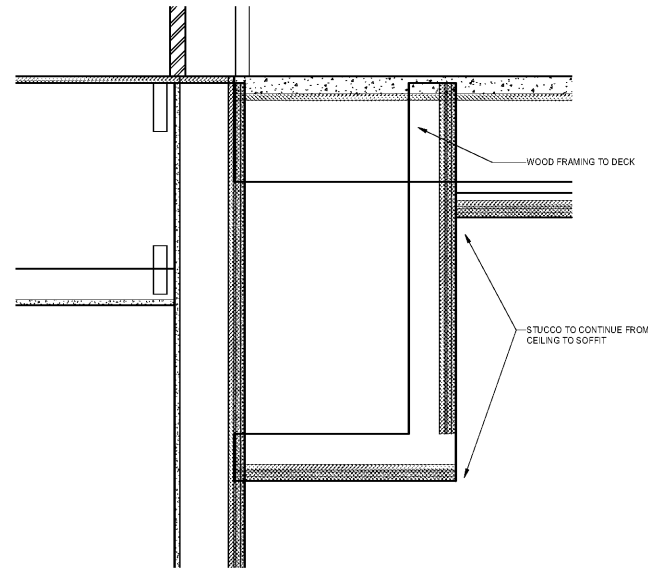


Order Plans @ [www.LDILine.com](http://www.LDILine.com)



2 UNIT ENTRY SOFFIT DETAIL - PLAN  
1/12" = 1/8"



1 UNIT ENTRY SOFFIT DETAIL - SECTION  
1/12" = 1/8"

PROJECT NO.	2/0002
DATE	20/04/10
DRAWN	LDI
CHECKED	

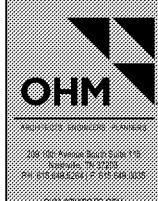
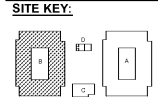
Revision Schedule	
No.	Description

NOV 02, 2015

PROJECT NAME  
**ROCKLEDGE FLATS - BUILDING B**  
220 Baron Boulevard  
Rockledge, FL 32955

CLIENT NAME  
**HUTTON DEVELOPMENT**

SHEET TITLE  
**INTERIOR DETAILS**



1925 Prospect Ave.  
Orlando, FL 32814  
P (407) 661-9100  
F (407) 661-9101  
www.c&p.com

GMP PRICING SET 15 NOVEMBER 2019

A-531