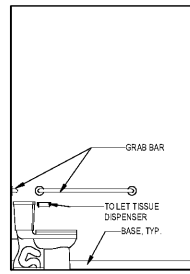
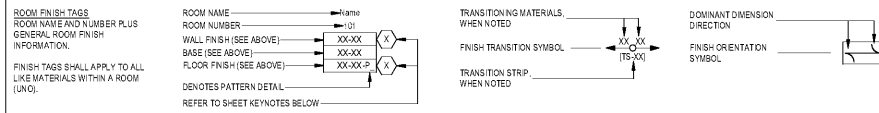
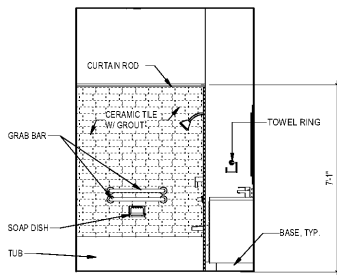


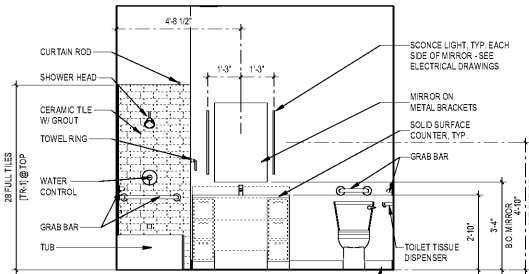
FINISH SYMBOLS



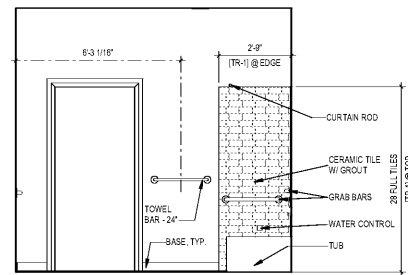
10 C1A- BATHROOM 2 ELEVATION - WEST
3/8" = 1'-0"



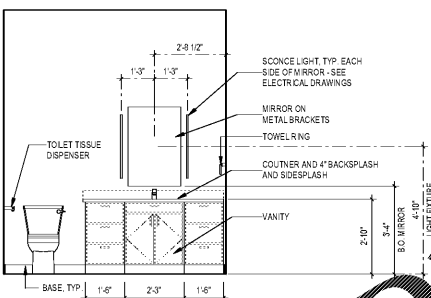
8 C1A- BATHROOM 2 ELEVATION - EAST
3/8" = 1'-0"



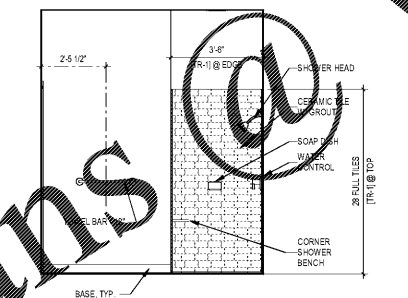
9 C1A- BATHROOM 2 ELEVATION - SOUTH
3/8" = 1'-0"



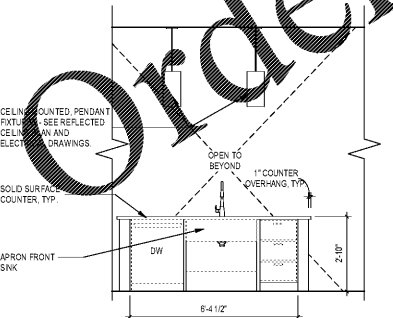
7 C1A- BATHROOM 2 ELEVATION - NORTH
3/8" = 1'-0"



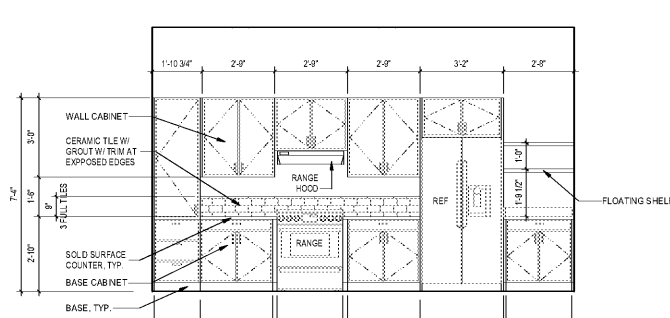
6 C1A- BATHROOM ELEVATION - SOUTH
3/8" = 1'-0"



5 C1A- BATHROOM ELEVATION - NORTH
3/8" = 1'-0"

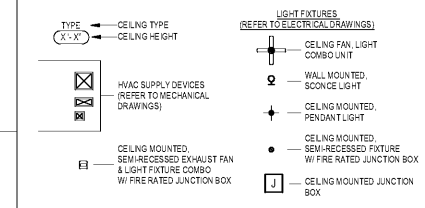


4 C1A- KITCHEN ELEVATION - WEST
3/8" = 1'-0"



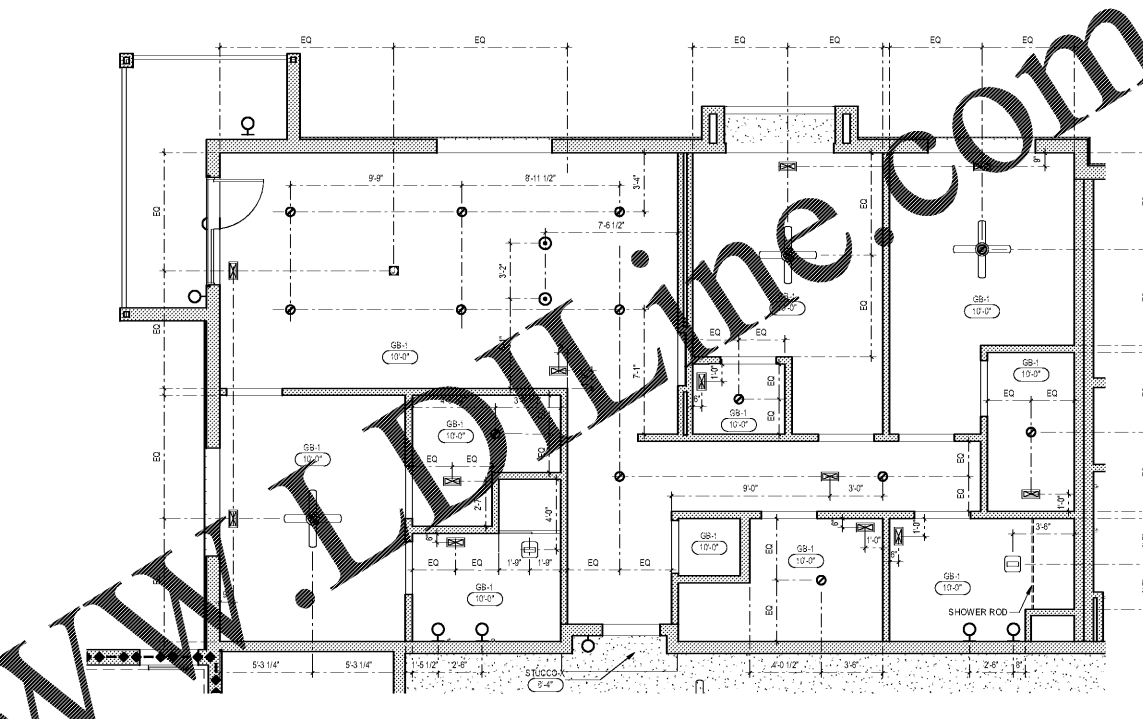
3 C1A- KITCHEN ELEVATION - EAST
3/8" = 1'-0"

CEILING SYMBOL LEGEND

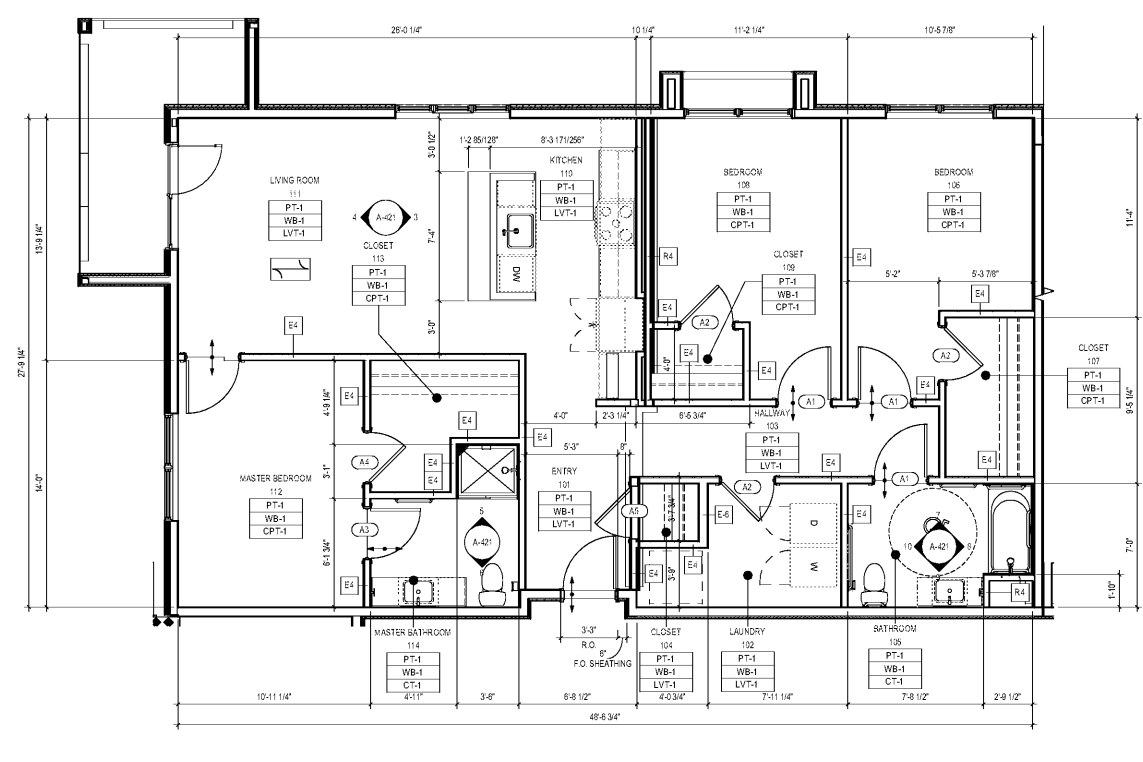


UNIT C1A DOOR SCHEDULE

SCHEDULE KEY:		DOOR TYPE:		DOOR MATERIAL:		FRAME TYPE:		FRAME MATERIAL:		DOOR / FRAME FINISH:		DETAIL:		FIRE RATING:		HARDWARE SET:	
AS SPECIFIED ON FLOOR PLANS		REFER TO LEGENDS ON A-501		WD WOOD		PH PRE-HUNG		WD WOOD		PF PRE-FINISHED PTD PAINTED		REFER TO DETAILS AS INDICATED		N MINUTES		REFER TO PROJECT MANUAL DIVISION 08 FOR HARDWARE SCHEDULE	
TYPE	SIZE	PAIR	TYPE	MAT'L	FINISH	TYPE	MAT'L	FINISH	HEAD	JAMB	THRS.	FIRE RATING	WALL	L.B.L.	HDW	NOTES	
A1	3'-0"	7'-0"	3'-0"	WD	PTD	PH	WD	PTD	PH	WD	PTD	KA-601	KA-601	KA-601	-	-	-
A2	3'-0"	7'-0"	3'-0"	WD	PTD	PH	WD	PTD	PH	WD	PTD	KA-601	KA-601	KA-601	-	-	-
A3	2'-0"	7'-0"	3'-0"	WD	PTD	PH	WD	PTD	PH	WD	PTD	KA-601	KA-601	KA-601	-	-	-
A4	2'-0"	7'-0"	3'-0"	WD	PTD	PH	WD	PTD	PH	WD	PTD	KA-601	KA-601	KA-601	-	-	-
A5	2'-0"	7'-0"	3'-0"	WD	PTD	PH	WD	PTD	PH	WD	PTD	KA-601	KA-601	KA-601	-	-	-



2 UNIT CEILING PLAN - C1A 3-BEDROOM
1/4" = 1'-0"

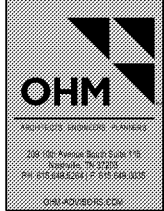


1 UNIT PLAN - C1A 3-BEDROOM
1/4" = 1'-0"

Order Plans @ WWW.ONLINE.COM

1925 Prospect Ave.
Orlando, FL 32814
P (407) 661-9100
F (407) 661-9101
www.rp.com

Calaci & Peterson
Architects Engineers Planners



OHM
ARCHITECTS ENGINEERS PLANNERS
1300 West Orange Blvd. Suite 200
Orlando, FL 32805
Tel: 407.886.2121 Fax: 407.886.2122
www.ohm.com

HUTTON DEVELOPMENT

ROCKLEDGE FLATS - BUILDING B
220 Baron Boulevard
Rockledge, FL 32955

Revision Schedule		Date
No.	Description	

PROJECT NO: 21002
DATE: 20/01/10
DRAWN: [Name]
CHECKED: [Name]

GMP PRICING SET 15 NOVEMBER 2019