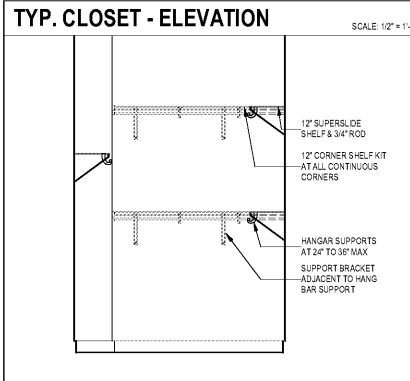


TYPICAL UNIT ENTRY PORTAL - ELEVATION  
3/8" = 1'-0"

TYPICAL UNIT ENTRY PORTAL - 3D VIEW  
3/8" = 1'-0"



TYP. CLOSET - ELEVATION  
SCALE: 1/2" = 1'-0"

UNIT FINISH LEGEND

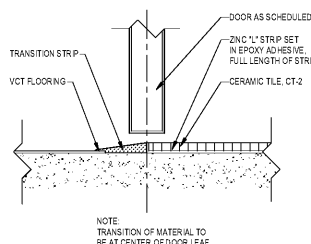
BASE	HARDWARE	SOLID SURFACE
<b>WB1</b> MANUFACTURER: N/A PRODUCT: 4" PAINTED WOOD BASE COLOR: (PT-8)	<b>HWB1</b> MANUFACTURER: HARDWARE RESOURCES PRODUCT: SUTTON - 655-1281B FINISH: MATTE BLACK INSTALLATION: HORIZONTAL NOTE: VERTICAL AT 24" D TALL CABINET	<b>SS4</b> MANUFACTURER: WILSONART PRODUCT: SOLID SURFACE 92/102CM COLOR: EUROPA
<b>CPT1</b> MANUFACTURER: SHAW CONTRACT PRODUCT: SCENERY CLASS (SAC) 5425 COLOR: ARTISTRY 0070	<b>HWB4</b> MANUFACTURER: HAFELE PRODUCT: SHELF SUPPORT W/ SCREW ON PLATE 283.33.904 NOTE: FLOATING SHELF HARDWARE	<b>TRM1</b> MANUFACTURER: SCHLUTER PRODUCT: JOLLY COLOR: BRUSHED ANTIQUE BRONZE FINISH: ANODIZED ALUMINUM
<b>CET1</b> MANUFACTURER: SHAW CONTRACT PRODUCT: 200 VENICE 17X17 COLOR: BEIGE FINISH: MATTE	<b>PT1</b> MANUFACTURER: SHERWIN WILLIAMS PRODUCT: PROMAR 200 SERIES COLOR: SW7024 AGREEABLE GRAY FINISH: EGGSHELL	<b>LVT1</b> MANUFACTURER: SHAW CONTRACT PRODUCT: TERRAIN II 12 ML D453V COLOR: GROVE 10769
<b>CET2</b> MANUFACTURER: SHAW CONTRACT PRODUCT: CPT1 SIMPLE 3X3P COLOR: 00101 BSCUIT FINISH: GLOSS	<b>PT2</b> MANUFACTURER: SHERWIN WILLIAMS PRODUCT: PROMAR 200 SERIES COLOR: SW7024 AGREEABLE GRAY FINISH: SEMI-GLOSS	<b>TRANSITION STRIP</b> <b>TS1</b> MANUFACTURER: TANODUS CENTVA PRODUCT: METALEDGE D01 COLOR: 179 STEEL NOTE: LVT TO CPT
<b>GR1</b> MANUFACTURER: LATCRETE PRODUCT: PERMACOLOR 250X-025-2 COLOR: 17 MARBLE BEIGE	<b>PT3</b> MANUFACTURER: SHERWIN WILLIAMS PRODUCT: PROMAR 200 SERIES COLOR: SW7024 FUNCTIONAL GRAY FINISH: SEMI-GLOSS	<b>TS2</b> MANUFACTURER: SCHLUTER PRODUCT: RENO-4 NOTE: CPT TO LVT & CPT TO CPT
<b>GR2</b> MANUFACTURER: LATCRETE PRODUCT: PERMACOLOR 250X-025-2 COLOR: 35 MOCHA	<b>PT4</b> MANUFACTURER: SHERWIN WILLIAMS PRODUCT: PROMAR 200 SERIES COLOR: T8D FINISH: FLAT	

UNIT PLAN NOTES

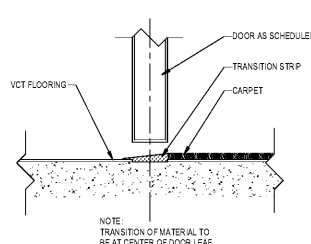
- REFER TO SHEET G-010 FOR ADDITIONAL ACCESSIBILITY REQUIREMENTS.
- REFER TO A-104 SERIES DRAWINGS FOR ALL EXTERIOR ASSEMBLY COMPONENTS.
- REFER TO G-022 FOR ALL TYPICAL MOUNTING HEIGHTS OF UNIT TOILET ACCESSORIES.
- REFER TO PROJECT DATA SHEETS (G SERIES) FOR PROJECT SQUARE FOOTAGE INFORMATION.
- CONTRACTOR TO DIMENSIONALLY CONFIRM ALL APPLIANCES, MECHANICAL EQUIPMENT & PLUMBING EQUIPMENT WITH MANUFACTURER PRIOR TO INTERIOR WALL AND FLOOR/DOWN CONSTRUCTION.
- VERIFY FRAMING OPENING DIMENSIONS SHOWN FOR TUBS AND SHOWERS WITH ACTUAL TUB AND SHOWER SUPPLIER. ADJUST AS REQUIRED. CEMENTITIOUS BACKER BOARD SHALL BE USED AT ALL TUB-SHOWER AREAS. MOISTURE RESISTANT GYPSUM BOARD WILL NOT BE ACCEPTED AT THESE LOCATIONS.
- ALL DIMENSIONS ON UNIT PLANS ARE TO OUTSIDE FACE OF FINISH UNLESS OTHERWISE NOTED. OTHERWISE STUDS NOT DIMENSIONED ARE 3-1/2" WOOD STUD, TYPICAL (2x4 NOMINAL).
- ALL DIMENSIONS BASED ON 5/8" GYPSUM BOARD AT INTERIOR BEARING AND NON-BEARING PARTITIONS.
- ALL INTERIOR UNIT WALLS AND CEILINGS ARE PAINTED 5/8" GYPSUM BOARD UNLESS NOTED OTHERWISE.
- ALL INTERIOR UNIT WALLS TO HAVE PAINTED WOOD BASE TRIM (WB-1) INCLUDING MECHANICAL UTILITY & COAT CLOSETS UNLESS NOTED OTHERWISE. REFER TO FINISH SCHEDULE FOR DETAILS.
- ALL CEILING HEIGHTS ARE APPROX. 10'-0" UNLESS NOTED OTHERWISE.
- ALL WORK AND CONSTRUCTION SHALL MEET OR EXCEED ALL APPLICABLE CODES.
- ALL INTERIOR ELEVATIONS ARE DRAWN ASSUMING FINISH FACE OF GYPSUM BOARD U.N.O.
- ALL MIRROR DIMENSIONS ARE TO OUTSIDE OF FRAME.
- ALL INTERIOR UNIT WALLS TO BE TYPE "E" UNLESS OTHERWISE NOTED. FOR OTHER WALL INFORMATION, REFER TO SHEET A-021.
- ALL HARDWARE THROUGHOUT UNIT TO BE (HOWR-1) UNLESS OTHERWISE NOTED.
- KITCHEN BASE CABINETS ARE 24" DEEP AND BATH CABINETS ARE 24" DEEP. EXCEPT 21" BATH CABINETS IN ANS TYPE "A" BATH.
- CLOSET SHELVES ARE METAL WIRE SHELVES. TYPICAL IS ONE (1) MOUNTED AT 60" AFF. 25 IS TWO (2) SHELVES, 16" WIDE MOUNTED AT 60" AFF. SHOWN VERTICAL. METAL BRACKETS UNDER SHELF. REFER TO TYPICAL CLOSET ELEVATION FOR ADDITIONAL ACCESSORIES.
- SHELVES AT PANTRY AND LINEN CLOSETS ARE METAL WIRE SHELVES. TYPICAL IS FIVE (5) SHELVES, 16" WIDE MOUNTED AT 24", 40", 56" AND 72" AFF.
- PROVIDE FINISH PANTRY LINEN CLOSET CABINETS AT KITCHEN. OWNER TO PURCHASE COUNTERTOP DOWNWARD. FINISH REQUIRED BY INSTALLED TENANT.
- PROVIDE BLOCKING TO ACCOMMODATE CLOSET CABINETS AT KITCHEN. OWNER TO PURCHASE COUNTERTOP DOWNWARD. FINISH REQUIRED BY INSTALLED TENANT.
- INSULATE ALL EXTERIOR UNIT WALLS WITH BATT INSULATION.
- REPLACE SCONCE LIGHT ON WALL AT 4'-10" TO CENTER.
- ALL INTERIOR UNIT WALLS TO BE ORANGE PEEL FINISH.
- SUBWAY TILE (CT-2) TO GO TO BOTTOM OF WALL CABINETS AND BEHIND FLOATING SHELVES.

UNIT PLAN OF ALTERNATES

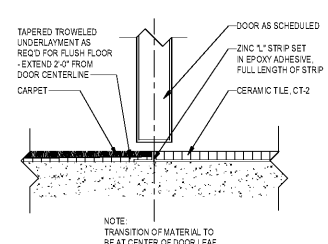
- FAMILY LIVING ROOM
- INSTEAD OF CHROME IN UNIT BATHROOMS INSTEAD OF MATTE BLACK
- INSTEAD OF TOILET SEAT IN UNIT BATHROOMS INSTEAD OF DUFFY SHELF 545-10 ZINC
- KITCHEN BACKSPLASH:  
A 4" SOLID SURFACE (SS-1) BACKSPLASH  
B SUBWAY TILE (CT-2) TO GO TO BOTTOM OF WALL CABINETS AND BEHIND FLOATING SHELVES



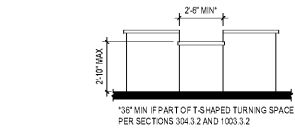
THRESHOLD VCT to TILE  
3/8" = 1'-0"



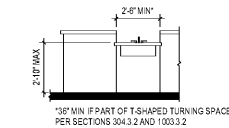
THRESHOLD VCT to CARPET  
3/8" = 1'-0"



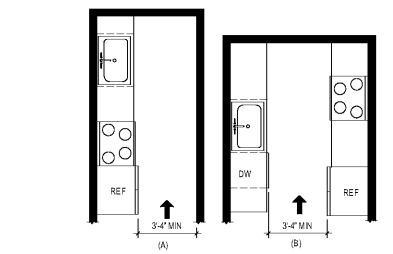
THRESHOLD TILE to CARPET  
3/8" = 1'-0"



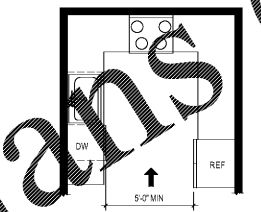
WORK SURFACE IN KITCHEN FOR TYPE A UNITS  
1/4" = 1'-0"



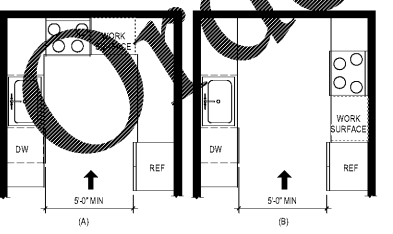
KITCHEN SINK FOR TYPE A UNITS  
1/4" = 1'-0"



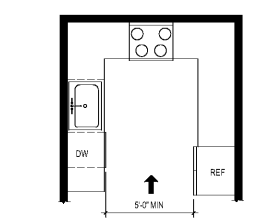
MINIMUM KITCHEN CLEARANCE IN TYPE A UNITS  
1/4" = 1'-0"



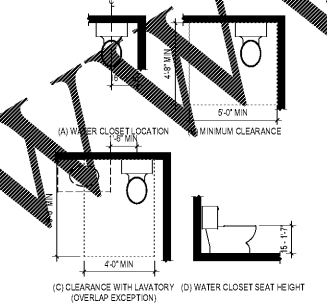
U-SHAPED KITCHEN CLEARANCE IN TYPE A UNITS  
1/4" = 1'-0"



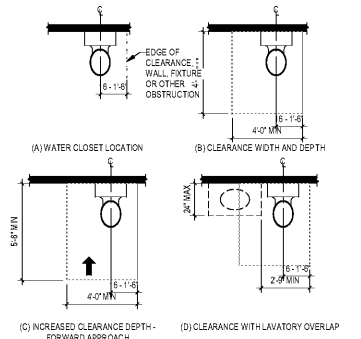
U-SHAPED KITCHEN CLEARANCE  
1/4" = 1'-0"



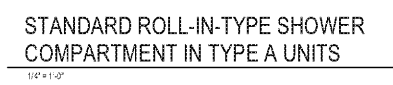
U-SHAPED KITCHEN CLEARANCE IN TYPE B UNITS  
1/4" = 1'-0"



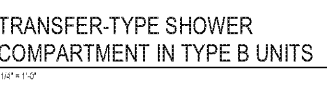
WATER CLOSETS IN TYPE A UNITS  
1/4" = 1'-0"



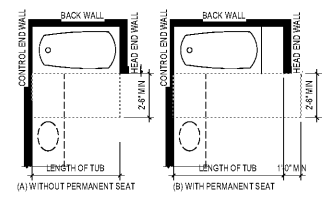
CLEARANCE AT WATER CLOSETS IN TYPE B UNITS  
1/4" = 1'-0"



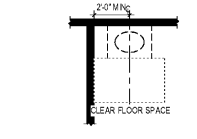
STANDARD ROLL-IN-TYPE SHOWER COMPARTMENT IN TYPE A UNITS  
1/4" = 1'-0"



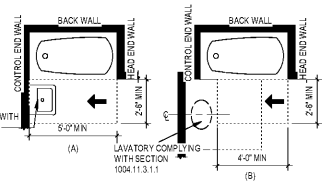
TRANSFER-TYPE SHOWER COMPARTMENT IN TYPE B UNITS  
1/4" = 1'-0"



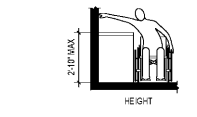
CLEARANCE FOR BATHTUBS IN TYPE A UNITS  
1/4" = 1'-0"



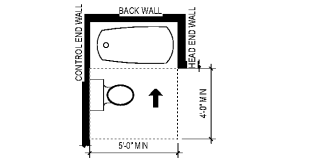
LAVATORY IN TYPE B UNITS OPTION A BATHROOMS  
1/4" = 1'-0"



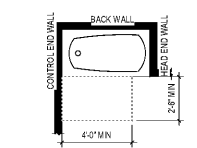
PARALLEL APPROACH BATHTUB IN TYPE B UNITS - OPTION A BATHROOMS  
1/4" = 1'-0"



LAVATORY IN TYPE B UNITS OPTION B BATHROOMS  
1/4" = 1'-0"

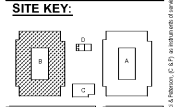
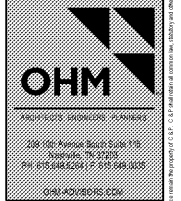


FORWARD APPROACH BATHTUB IN TYPE B UNITS - OPTION A BATHROOMS  
1/4" = 1'-0"



BATHROOM CLEARANCE IN TYPE B UNITS OPTION B BATHROOMS  
1/4" = 1'-0"

1925 Prospect Ave.  
Orlando, FL 32814  
P (407) 661-9100  
F (407) 661-9101  
www.r.p.c.com



HUTTON DEVELOPMENT  
ROCKLEDGE FLATS - BUILDING B  
220 Baron Boulevard  
Rockledge, FL 32955

TYPICAL UNIT INFORMATION

PROJECT NO:	210072
DATE:	20/09/10
DESIGNER:	RP
CHECKED:	Checker