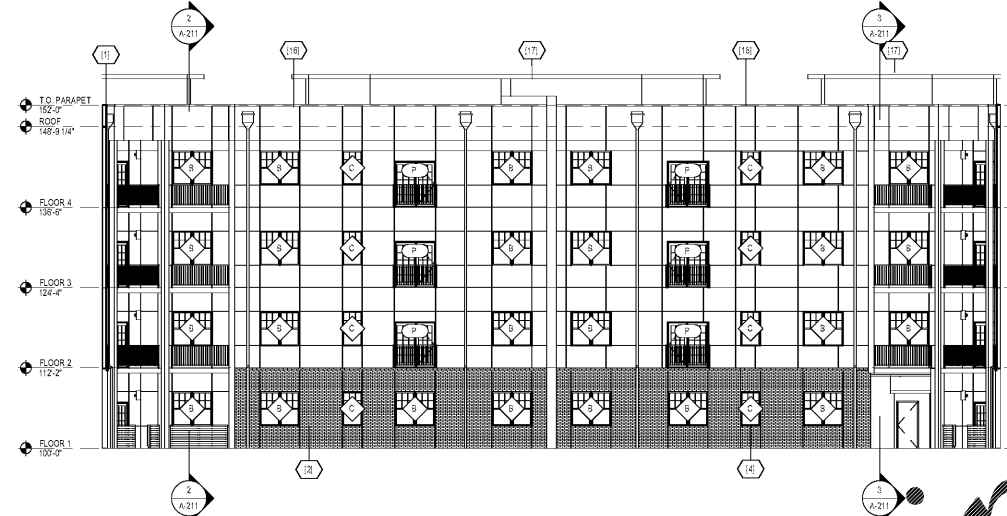


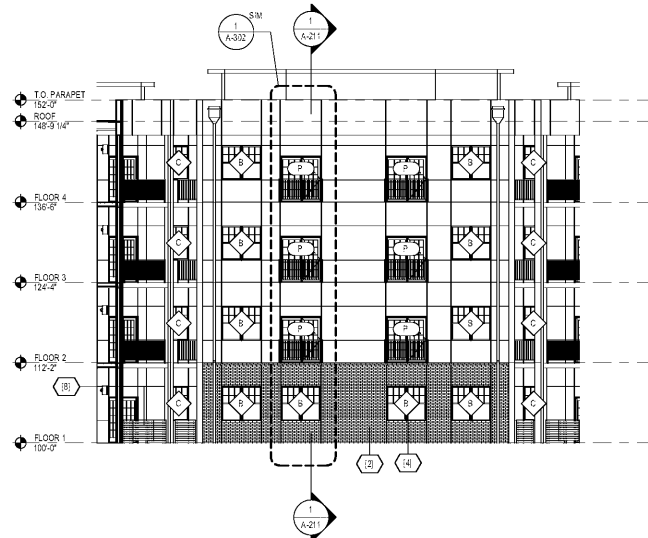
5 Elevation - COURTYARD SOUTH

3/32" = 1'-0"



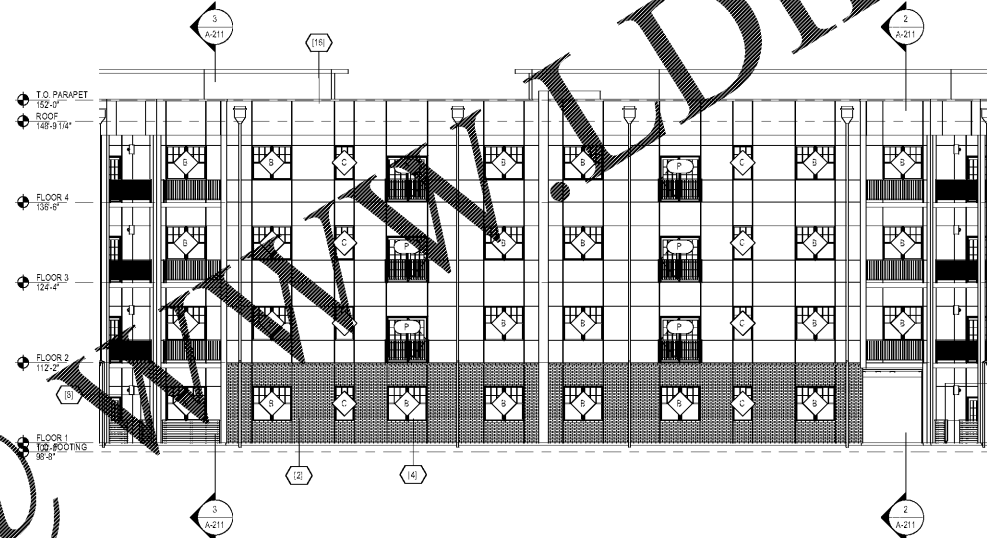
4 Elevation - COURTYARD WEST

3/32" = 1'-0"



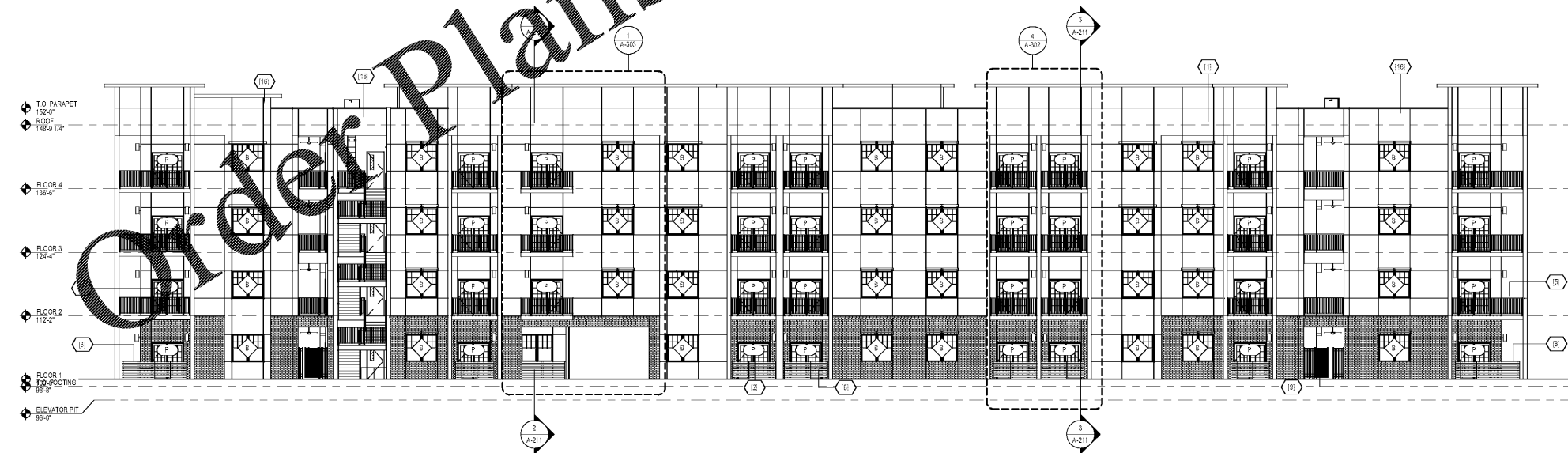
3 Elevation - COURTYARD NORTH

3/32" = 1'-0"



2 Elevation - COURTYARD EAST

3/32" = 1'-0"



1 WEST ELEVATION

3/32" = 1'-0"

GENERAL ELEVATION NOTES

- 1 ALL PENETRATIONS SHALL BE SEALED WITH APPROPRIATE MATERIAL.
- 2 ALL EXPOSED METAL ELEMENTS TO BE PRE-FINISHED, COLOR AS SELECTED BY ARCHITECT
- 3 REFER TO SPECIFICATIONS FOR ADDITIONAL INFORMATION ON FINISHES & INSTALLATION REQUIREMENTS

KEYNOTE LEGEND

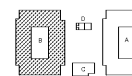
- (1) STUCCO
- (2) DRYVIT NEWBRICK
- (3) ALUMINUM WINDOWS - SEE SCHEDULE
- (4) ALUMINUM RAILING
- (5) ALUMINUM SLIDING DOOR - SEE SCHEDULE
- (6) WOOD FENCE
- (7) METAL FENCE W/ OPERABLE GATE
- (8) METAL COPING
- (9) METAL CAP AND CORNICE, DTL, TBD

1925 Prospect Ave.  
Orlando, FL 32814  
P (407) 661-9100  
F (407) 661-9101  
www.crp.com



OHM  
1000 N. Orange Blossom Trail  
Orlando, FL 32817  
407.422.8046  
www.ohm.com

SITE KEY:



CLIENT NAME  
HUTTON DEVELOPMENT

PROJECT NAME  
ROCKLEDGE FLATS - BUILDING B  
220 Baron Boulevard  
Rockledge, FL 32955

FACILITY TITLE  
EXTERIOR ELEVATION

NOV 03, 2015

Revision Schedule	
No.	Description

PROJECT NO. 21002	DATE 20/11/10	DRAWN N/A	CHECKED 
----------------------	------------------	--------------	-------------

A-202

GMP PRICING SET 15 NOVEMBER 2019