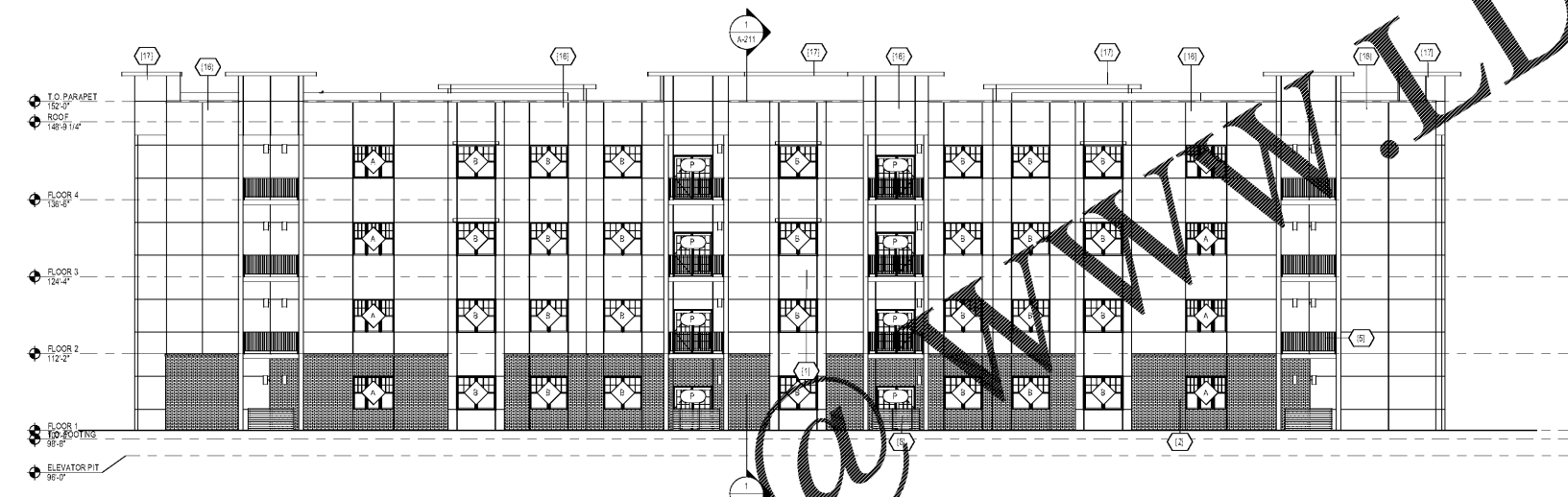
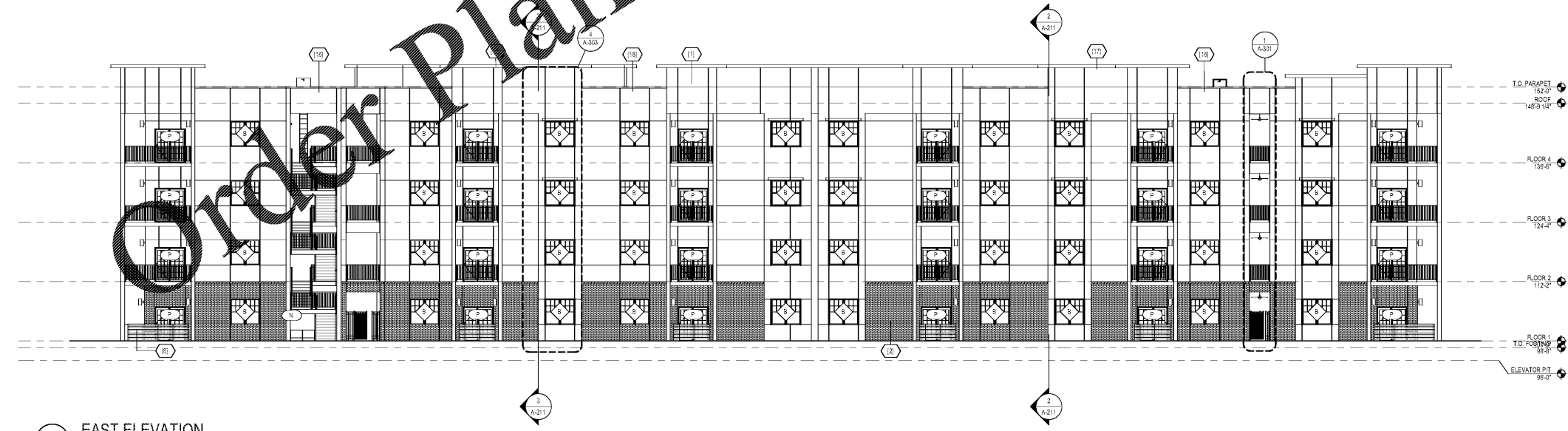


3 SOUTH ELEVATION
302' x 110'



2 NORTH ELEVATION
302' x 110'



1 EAST ELEVATION
302' x 110'

GENERAL ELEVATION NOTES

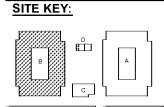
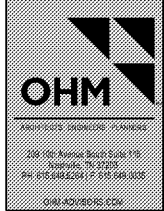
- 1 ALL PENETRATIONS SHALL BE SEALED WITH APPROPRIATE MATERIAL.
- 2 ALL EXPOSED METAL ELEMENTS TO BE PRE-FINISHED, COLOR AS SELECTED BY ARCHITECT
- 3 REFER TO SPECIFICATIONS FOR ADDITIONAL INFORMATION ON FINISHES & INSTALLATION REQUIREMENTS

KEYNOTE LEGEND

(1)	STUCCO
(2)	DRYVIT NEWBRICK
(4)	ALUMINUM WINDOWS - SEE SCHEDULE
(5)	ALUMINUM RAILING
(7)	ALUMINUM SLIDING DOOR - SEE SCHEDULE
(8)	WOOD FENCE
(9)	METAL FENCE W/ OPERABLE GATE
(16)	METAL COPING
(17)	METAL CAP AND CORNICE, DTL, TBD

1925 Prospect Ave.
Orlando, FL 32814
P (407) 661-9100
F (407) 661-9101
www.r.p.c.com

Culacci & Peterson
Architects Engineers Planners



CLIENT NAME
HUTTON DEVELOPMENT

PROJECT NAME
ROCKLEDGE FLATS - BUILDING B
220 Baron Boulevard
Rockledge, FL 32955

SHEET TITLE
EXTERIOR ELEVATION

Revision Schedule		Date
No.	Description	

NOV 03, 2015

PROJECT NO. 210072
DATE 20/11/15
DRAWN BY: [blank]
CHECKED BY: [blank]

GMP PRICING SET 15 NOVEMBER 2019