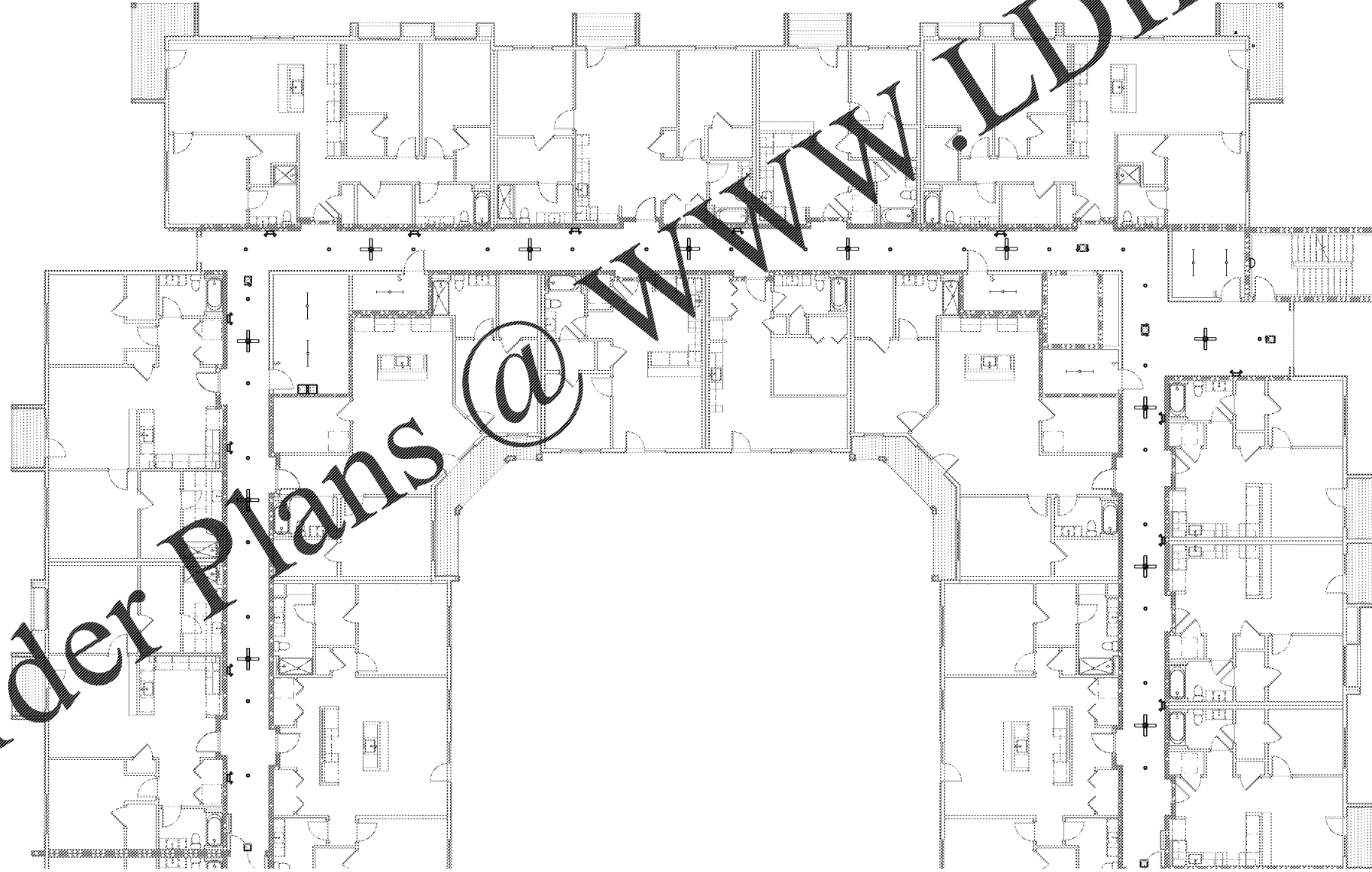


Ⓢ LIGHTING PLAN B - 3RD FLOOR
1/8" = 1'-0"



GENERAL NOTES

1. CONTRACTOR TO PROVIDE AND INSTALL TIMER SWITCH CONTROLS IN ELECTRICAL ROOM FOR AUTOMATIC ON/OFF CONTROL OF CORRIDOR LIGHTING, CORRIDOR FAN, LIVING UNIT ENTRY ROOMS, AND EXTERIOR LANDSCAPE LIGHTING. FIELD COORDINATE EXACT QUANTITY OF TIMER SWITCH CONTROLS WITH OWNER.
2. CONTRACTOR TO PROVIDE AND INSTALL SINGLE ON/OFF WATER PROOF LIGHT SWITCH LOCATED IN ELEVATOR PIT FOR PIT LIGHTING CONTROL.
3. CONTRACTOR SHALL REFER TO ARCHITECTURAL REFLECTING CEILING PLANS FOR ADDITIONAL INFORMATION ON LIGHTING LOCATIONS AND FIXTURE TYPES.

Order Plans @ WWW.LDILine.com

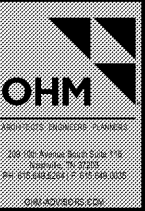
Revision Schedule	
No.	Description

PROJECT NO. 0540150010	DATE 20/01/10	DRAWN [Signature]	CHECKED [Signature]
---------------------------	------------------	----------------------	------------------------

PROJECT NAME ROCKLEDGE MULTI-FAMILY 220 Baron Boulevard Rockledge, FL 32955	CLIENT NAME
--	-------------

PROJECT TITLE THIRD FLOOR LIGHTING PLAN B	DATE NOV 03, 2015
--	----------------------

PROJECT NO. 0540150010	DATE NOV 03, 2015
---------------------------	----------------------



OHM
ARCHITECTS ENGINEERS PLANNERS
2001 W. AVENUE 2000, SUITE 1100
ROCKLEDGE, FL 32955
PH: 407.426.8500
WWW.OHMFL.COM

1925 Prospect Ave.
Orlando, FL 32814
P (407) 661-9100
F (407) 661-9101
www.rfp.com

Chalaci & Peterson
Architects Engineers Planners

GMP PRICING SET

E301B