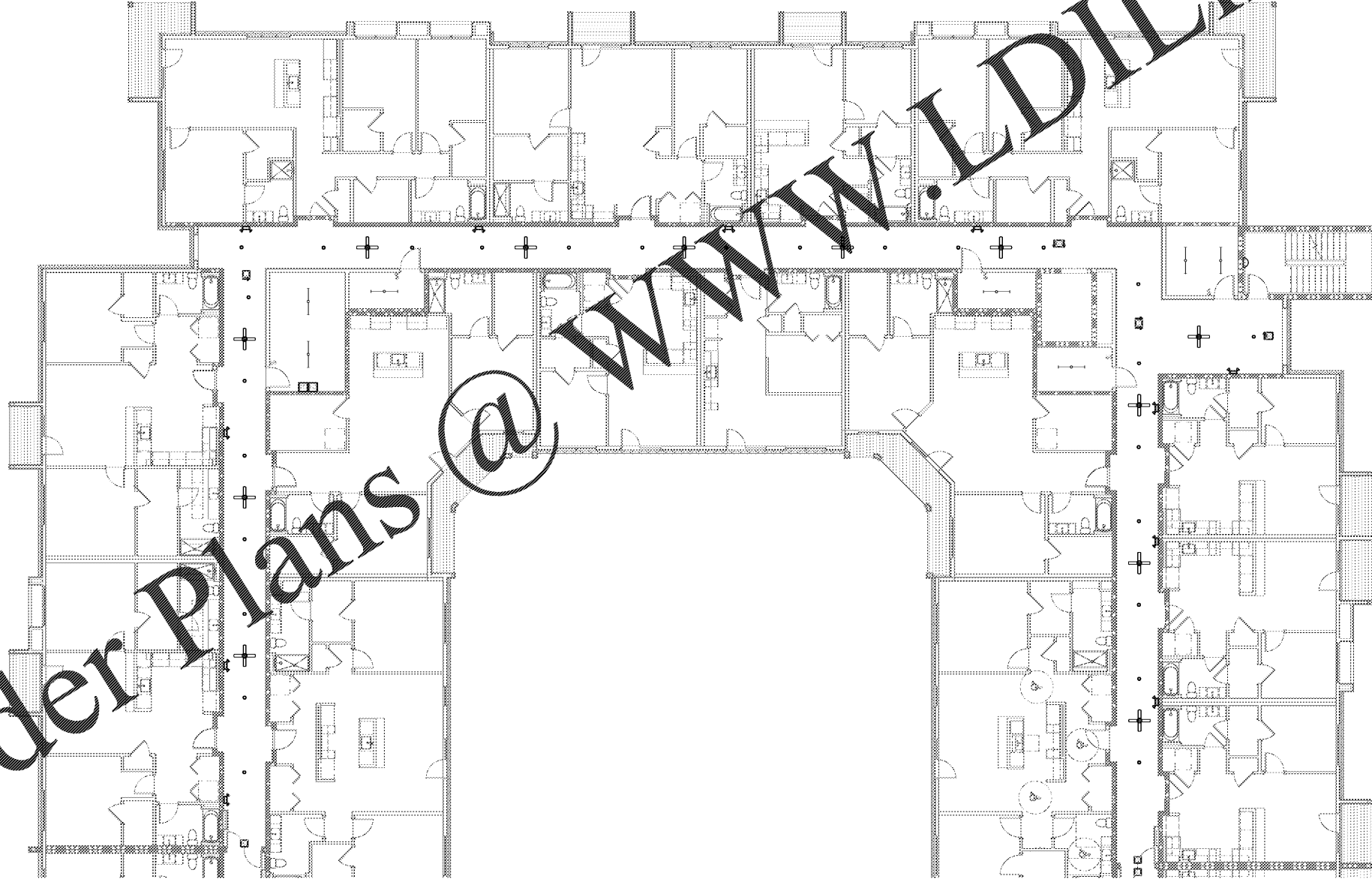


Order Plans @ [www.LDLine.com](http://www.LDLine.com)

**GENERAL NOTES**

1. CONTRACTOR TO PROVIDE AND INSTALL TIMER SWITCH CONTROLS IN ELECTRICAL ROOM FOR AUTOMATIC ON/OFF CONTROL OF CORRIDOR LIGHTING, CORRIDOR FANS, LIVING UNIT ENTRY SPACES, AND EXTERIOR LANDSCAPING LIGHTING. FIELD COORDINATE EXACT QUANTITY OF TIMER SWITCH CONTROLS WITH OWNER.
2. CONTRACTOR TO PROVIDE AND INSTALL SINGLE COVER WATERPROOF LIGHT SWITCH LOCATED IN ELEVATOR PIT FOR PIT LIGHTING CONTROL.
3. CONTRACTOR SHALL REFER TO ARCHITECTURAL REFLECTING CEILING PLANS FOR ADDITIONAL INFORMATION ON LIGHTING LOCATIONS AND FIXTURE TYPES.



1 LIGHTING PLAN B - 2ND FLOOR  
1/8" = 1'-0"

1925 Prospect Ave.  
Orlando, FL 32814  
P (407) 661-9100  
F (407) 661-9101  
[www.r.p.e.com](http://www.r.p.e.com)



CLIENT NAME  
**ROCKLEDGE MULTI-FAMILY**

PROJECT NAME  
**ROCKLEDGE MULTI-FAMILY**  
220 Barron Boulevard  
Rockledge, FL 32955

SHEET TITLE  
**SECOND FLOOR LIGHTING PLAN B**

NOV 02, 2015

Revision Schedule	
No.	Description

PROJECT NO. 0540150010	DATE 20/09/10	DRAWN [Signature]	CHECKED [Signature]
---------------------------	------------------	----------------------	------------------------

E201B

GMP PRICING SET