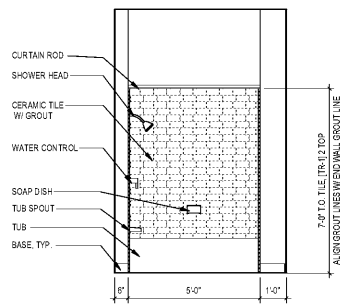
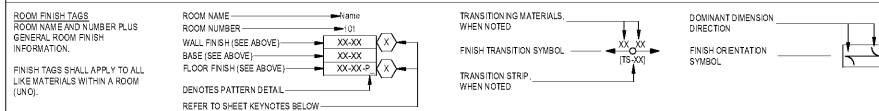
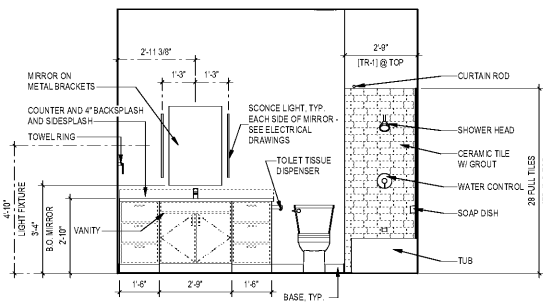


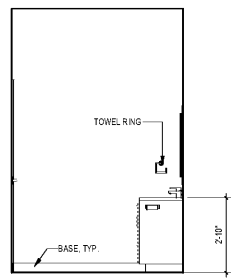
**FINISH SYMBOLS**



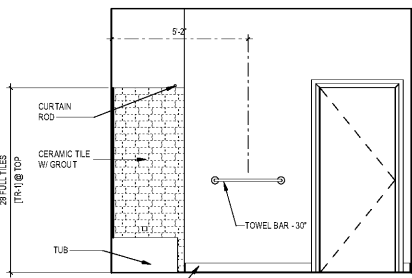
11 C1- BATHROOM 2 ELEVATION - WEST  
3/8" = 1'-0"



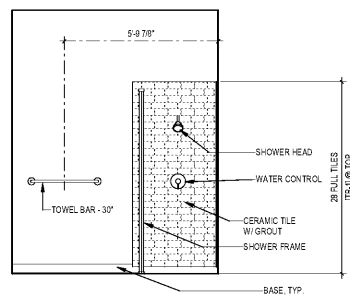
10 C1- BATHROOM 2 ELEVATION - SOUTH  
3/8" = 1'-0"



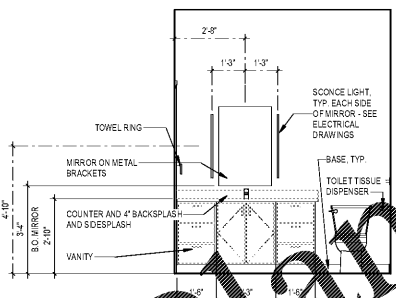
9 C1- BATHROOM 2 ELEVATION - EAST  
3/8" = 1'-0"



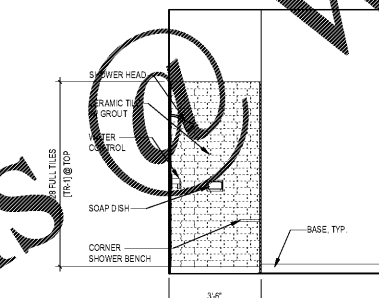
8 C1- BATHROOM 2 ELEVATION - NORTH  
3/8" = 1'-0"



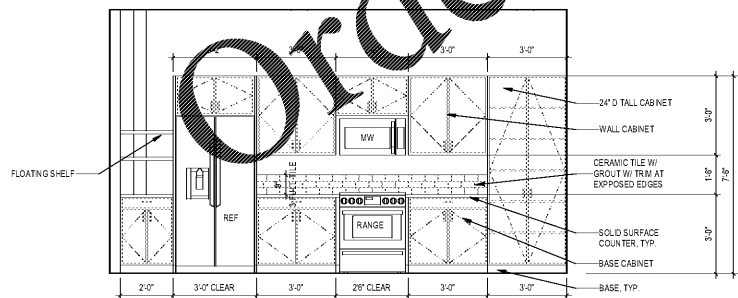
7 C1- BATHROOM ELEVATION - WEST  
3/8" = 1'-0"



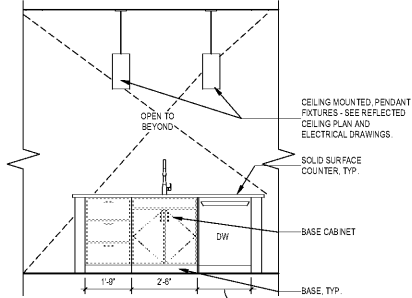
6 C1- BATHROOM ELEVATION - SOUTH  
3/8" = 1'-0"



5 C1- BATHROOM ELEVATION - NORTH  
3/8" = 1'-0"

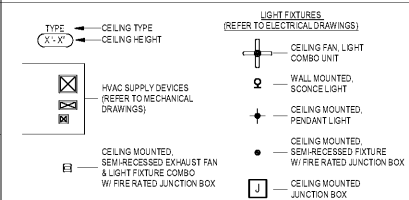


4 C1- KITCHEN ELEVATION - WEST  
3/8" = 1'-0"



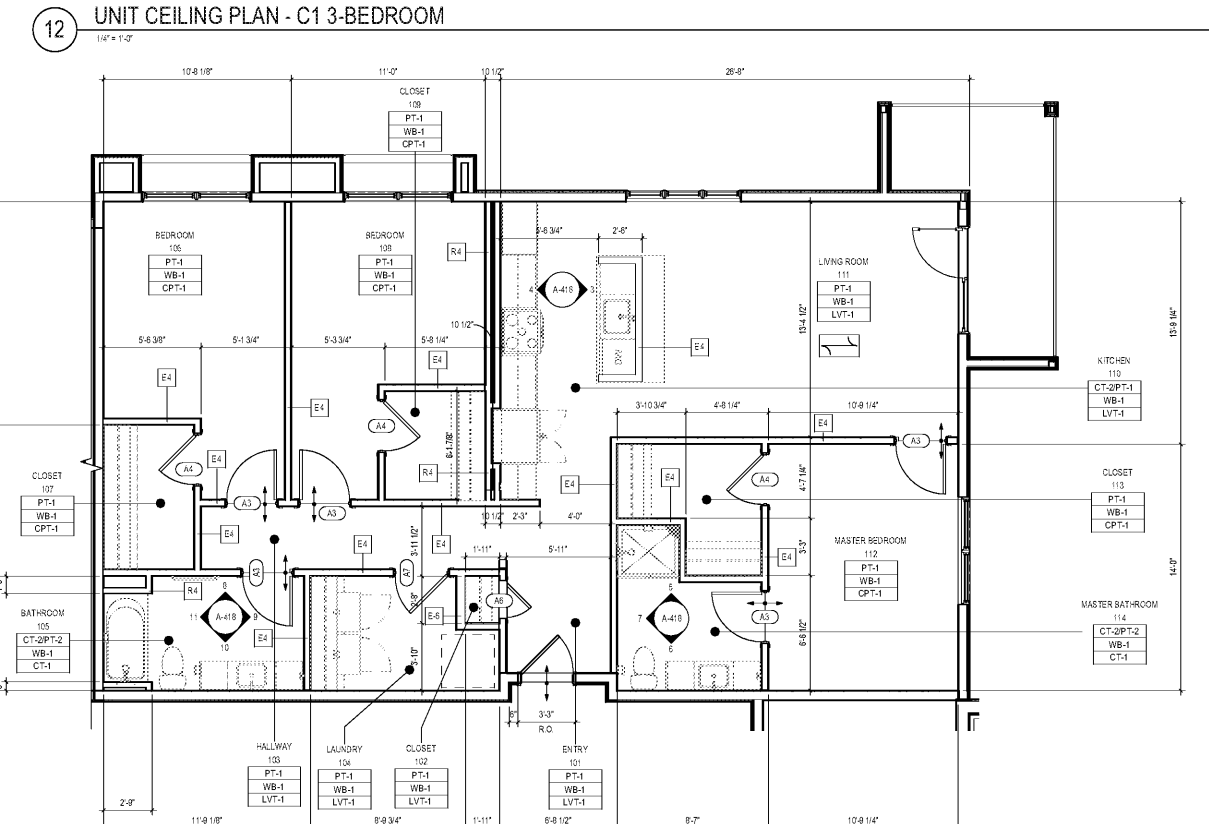
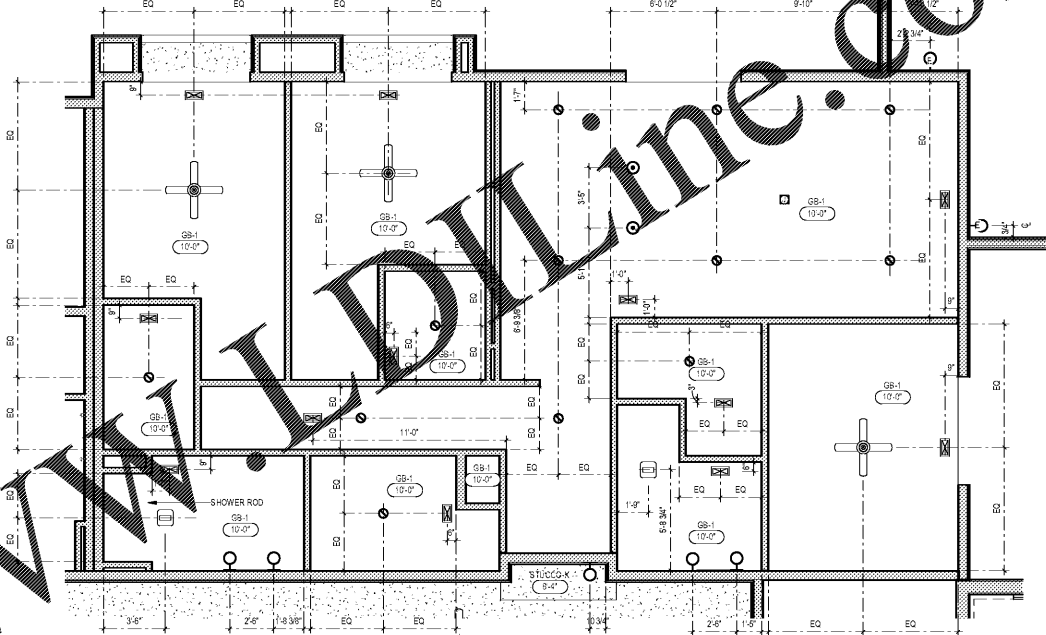
3 C1- KITCHEN ELEVATION EAST  
3/8" = 1'-0"

**CEILING SYMBOL LEGEND**



**UNIT C1 DOOR SCHEDULE**

SCHEDULE KEY:		DOOR TYPE:		DOOR MATERIAL:		FRAME TYPE:		FRAME MATERIAL:		DOOR / FRAME FINISH:		DETAIL:		FIRE RATING:		HARDWARE SET:	
TYPE	AS SPECIFIED ON FLOOR PLANS	REFER TO LEGEND ON A-601	WD	PH	PRE-HUNG	WD	WOOD	WD	WOOD	PTD	PRE-FINISHED PTD PAINTED	REFER TO DETAILS AS INDICATED	N	MINUTES	REFER TO PROJECT MANUAL DIVISION 08 FOR HARDWARE SCHEDULE		
A3	2'-0"	7'-0"	1 3/4"	PH	WD	PTD	PH	WD	PTD	KA-601	KA-601	KA-601	-	-	-	-	-
A4	2'-0"	7'-0"	1 3/4"	PH	WD	PTD	PH	WD	PTD	KA-601	KA-601	KA-601	-	-	-	-	-
A6	2'-0"	7'-0"	1 3/4"	PH	WD	PTD	PH	WD	PTD	KA-601	KA-601	KA-601	-	-	-	-	-
A7	3'-0"	7'-0"	1 3/4"	PH	WD	PTD	PH	WD	PTD	KA-601	KA-601	KA-601	-	-	-	-	-



WWW.DIYline.com

Order Plans

1925 Prospect Ave.  
Orlando, FL 32814  
P (407) 661-9100  
F (407) 661-9101  
www.crp.com

**Culaci & Peterson**  
Architects Engineers Planners

**OHM**  
ARCHITECTS ENGINEERS PLANNERS  
13810 Avenida South 3rd Fl  
Aventura, FL 33155  
Tel: 305.556.2124 Fax: 305.556.2125  
www.ohm.com



CLIENT NAME  
**HUTTON DEVELOPMENT**  
756 Cherry Street  
Chattanooga, TN 37402

PROJECT NAME  
**ROCKLEDGE FLATS - BUILDING A**  
220 Barton Boulevard  
Rockledge, FL 32955

SHEET TITLE  
**UNIT PLANS & ELEVATIONS - C1 - THREE BEDROOMS**

Revision Schedule	
No.	Description

PROJECT NO. 21002  
DATE 11/15/2019  
DRAWN  
CHECKED

GMP PRICING SET 15 NOVEMBER 2019

A-418