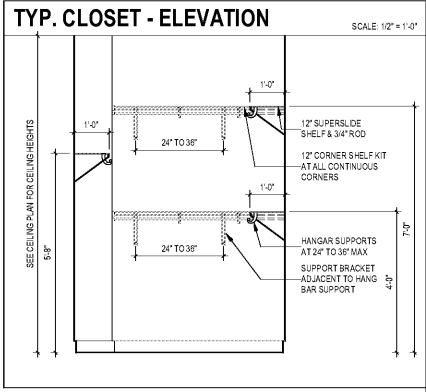


TYPICAL UNIT ENTRY PORTAL - ELEVATION
3/8" = 1'-0"

TYPICAL UNIT ENTRY PORTAL - 3D VIEW



TYP. CLOSET - ELEVATION
SCALE 1/2" = 1'-0"

UNIT FINISH LEGEND

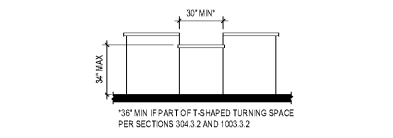
BASE	HARDWARE	SOLID SURFACE
WB1 MANUFACTURER: N/A PRODUCT: 4" PAINTED WOOD BASE COLOR: (PT-3)	HWB1 MANUFACTURER: HARDWARE RESOURCES PRODUCT: SUTTON 655-12819 FINISH: MATTE BLACK INSTALLATION: HORIZONTAL NOTE: VERTICAL AT 24" D TALL CABINET	SS4 MANUFACTURER: WILSONART PRODUCT: SOLID SURFACE 92/02CM COLOR: EUROPA
CP1A MANUFACTURER: SHAW CONTRACT PRODUCT: SENEARY CLASS (SAC) 5A25 COLOR: ARTISTRY 0070	HWB4 MANUFACTURER: HAFELE PRODUCT: SHELF SUPPORT W/ SCREW ON PLATE 283.33.904 NOTE: FLOATING SHELF HARDWARE	TRM1 MANUFACTURER: SCHLUTER PRODUCT: JOLLY COLOR: BRUSHED ANTIQUE BRONZE FINISH: ANODIZED ALUMINUM
CERAMIC TILE	PAINT	LUXURY VINYL TILE
CT1 MANUFACTURER: SHAW CONTRACT PRODUCT: 200 VENICE 17X17 COLOR: BEIGE FINISH: MATTE	PT1 MANUFACTURER: SHERWIN WILLIAMS PRODUCT: PROMAR 200 SERIES COLOR: SW7029 AGREEABLE GRAY FINISH: EGGSHELL	LVT1 MANUFACTURER: SHAW CONTRACT PRODUCT: TERRAIN II 12 ML D453V COLOR: GROVE 00769
CT2 MANUFACTURER: SHAW CONTRACT PRODUCT: CT913 SIMPLE 3X6" COLOR: 00101 BSCUIT FINISH: GLOSS	PT2 MANUFACTURER: SHERWIN WILLIAMS PRODUCT: PROMAR 200 SERIES COLOR: SW7029 AGREEABLE GRAY FINISH: SEMI-GLOSS	TRANSITION STRIP
GROUT	PT3 MANUFACTURER: SHERWIN WILLIAMS PRODUCT: PROMAR 200 SERIES COLOR: SW7024 FUNCTIONAL GRAY FINISH: SEMI-GLOSS	TS4 MANUFACTURER: TANODUS CENTIVA PRODUCT: METALEDGE 001 COLOR: 179 STEEL NOTE: LVT TO CPT
GR1 MANUFACTURER: LATCRETE PRODUCT: PERMACOLOR 250X-0025-2 COLOR: 17 MARBLE BEIGE	PT4 MANUFACTURER: SHERWIN WILLIAMS PRODUCT: PROMAR 200 SERIES COLOR: TBD FINISH: FLAT NOTE: CEILING PAINT	TS2 MANUFACTURER: SCHLUTER PRODUCT: RENO-4 NOTE: CT TO LVT & CT TO CPT
GR2 MANUFACTURER: LATCRETE PRODUCT: PERMACOLOR 250X-0025-2 COLOR: 35 MOCHA		

UNIT PLAN NOTES

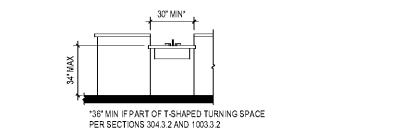
- REFER TO SHEET G-010 FOR ADDITIONAL ACCESSIBILITY REQUIREMENTS.
- REFER TO A-106 SERIES DRAWINGS FOR ALL EXTERIOR ASSEMBLY COMPONENTS.
- REFER TO G-002 FOR ALL TYPICAL MOUNTING HEIGHTS OF UNIT TOILET ACCESSORIES.
- REFER TO PROJECT DATA SHEETS (G SERIES) FOR PROJECT SQUARE FOOTAGE INFORMATION.
- CONTRACTOR TO DIMENSIONALLY CONFIRM ALL APPLIANCES, MECHANICAL EQUIPMENT & PLUMBING EQUIPMENT WITH MANUFACTURER PRIOR TO INTERIOR WALL AND FLOOR/DOOR CONSTRUCTION.
- VERIFY FRAMING OPENING DIMENSIONS SHOWN FOR TUBS AND SHOWERS WITH ACTUAL TUB AND SHOWER SUPPLIER. ADJUST AS REQUIRED. CEMENTITIOUS BACKER BOARD SHALL BE USED AT ALL TUB/SHOWER AREAS. MOISTURE RESISTANT GYPSUM BOARD WILL NOT BE ACCEPTED AT THESE LOCATIONS.
- ALL DIMENSIONS ON UNIT PLANS ARE TO OUTSIDE FACE OF FINISH UNLESS OTHERWISE NOTED. OTHERWISE STUDIOS NOT DIMENSIONED ARE 3-1/2" WOOD STUD, TYPICAL (2x4 NOMINAL).
- ALL MIRROR DIMENSIONS BASED ON 5/8" GYPSUM BOARD AT INTERIOR BEARING AND NON-BEARING PARTITIONS.
- ALL INTERIOR UNIT WALLS AND CEILINGS ARE PAINTED 5/8" GYP BOARD UNLESS NOTED OTHERWISE.
- ALL INTERIOR UNIT WALLS TO BE TYPE "E" UNLESS OTHERWISE NOTED. FOR OTHER WALL INFORMATION, REFER TO SHEET A-011.
- ALL CEILING HEIGHTS ARE APPROX. 10'-0" UNLESS NOTED OTHERWISE.
- ALL WORK AND CONSTRUCTION SHALL MEET OR EXCEED ALL APPLICABLE CODES.
- ALL INTERIOR ELEVATIONS ARE DRAWN ASSUMING FINISH FACE OF GYPSUM BOARD U.N.O.
- ALL MIRROR DIMENSIONS ARE TO OUTSIDE OF FRAME.
- ALL INTERIOR UNIT WALLS TO BE TYPE "E" UNLESS OTHERWISE NOTED. FOR OTHER WALL INFORMATION, REFER TO SHEET A-011.
- ALL HARDWARE THROUGHOUT UNIT TO BE (HOWR-1) UNLESS OTHERWISE NOTED.
- KITCHEN BASE CABINETS ARE 24" DEEP AND BATH BATH CABINETS ARE 24" DEEP TYP. EXCEPT 21" BATH-BASE CABINETS IN ANS TYPE A BATH.
- CLOSET SHELVES ARE METAL WIRE SHELVES. MATERIAL IS 15 IS ONE (1) MOUNTED AT 60" AFF. 25 IS TWO (2) SHELVES, 16" WIDE MOUNTED AT 60" AFF. SHOWERS SHALL BE MOUNTED UNDER A SHELF. REFER TO TYPICAL CLOSET ELEVATION FOR ADDITIONAL UNIT/STATION ADDITIONAL ACCESSORIES.
- SHELVES AT PANTRY AND LINEN CLOSETS ARE METAL WIRE SHELVES. MATERIAL IS FIVE (5) SHELVES, 16" WIDE MOUNTED AT 24", 40", 56" AND 72" AFF.
- PROVIDE FINISH PANELS AT ALL EXPOSED CORNERS OF CABINETS.
- PROVIDE BLOCKING TO ACCOMMODATE CLOSER CABINETS AT KITCHEN. OWNER TO PURCHASE COUNTERTOP AND SINK. PROVIDE BLOCKING TO ACCOMMODATE CLOSER CABINETS AT KITCHEN. OWNER TO PURCHASE COUNTERTOP AND SINK. PROVIDE BLOCKING TO ACCOMMODATE CLOSER CABINETS AT KITCHEN. OWNER TO PURCHASE COUNTERTOP AND SINK.
- INSTALL ALL POORING WALLS WITH 1/2" BATT INSULATION.
- REPLACE SCONCE LIGHTS ON WALL AT 4'-10" TO CENTER.
- ALL INTERIOR UNIT WALLS TO BE ORANGE PEEL.

UNIT LIST OF ALTERNATES

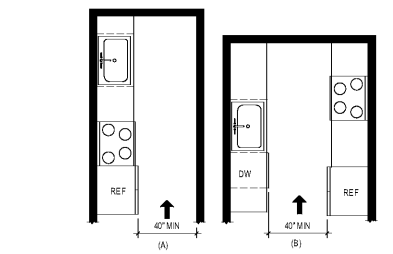
- FAMILY LIVING ROOM
- (H) TO BE CHROME IN UNIT BATHROOMS INSTEAD OF MATTE BLACK
- (H) TO BE REPLACED WITH HARDWARE RESOURCES HEAVY DUTY SHELF 548-10 ZNC
- KITCHEN BACKSPLASH:
A 4" SOLID SURFACE (SS-1) BACKSPLASH
B SUBWAY TILE (CT-1) TO GO TO BOTTOM OF WALL CABINETS AND BEHIND FLOATING SHELVES



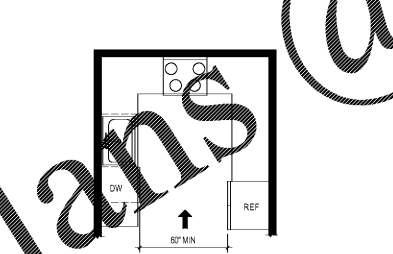
WORK SURFACE IN KITCHEN FOR TYPE A UNITS
1/4" = 1'-0"



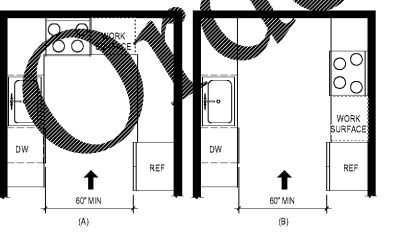
KITCHEN SINK FOR TYPE A UNITS
1/4" = 1'-0"



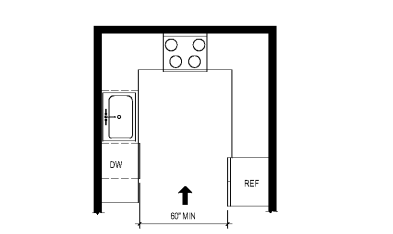
MINIMUM KITCHEN CLEARANCE IN TYPE A UNITS
1/4" = 1'-0"



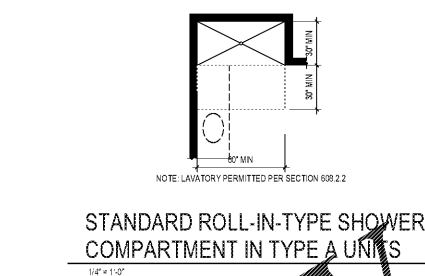
U-SHAPED KITCHEN CLEARANCE IN TYPE A UNITS
1/4" = 1'-0"



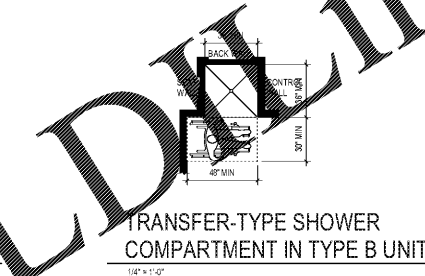
U-SHAPED KITCHEN CLEARANCE
1/4" = 1'-0"



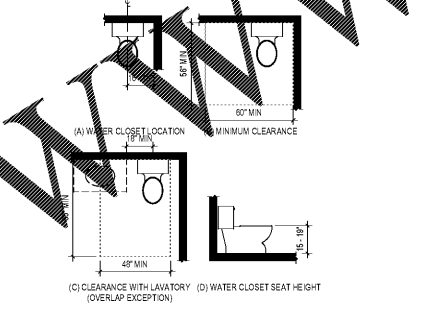
U-SHAPED KITCHEN CLEARANCE IN TYPE B UNITS
1/4" = 1'-0"



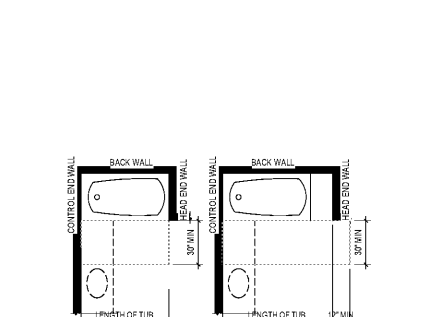
STANDARD ROLL-IN-TYPE SHOWER COMPARTMENT IN TYPE A UNITS
1/4" = 1'-0"



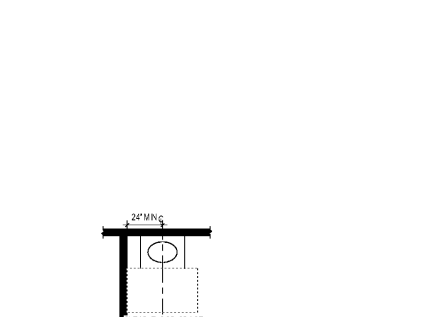
TRANSFER-TYPE SHOWER COMPARTMENT IN TYPE B UNITS
1/4" = 1'-0"



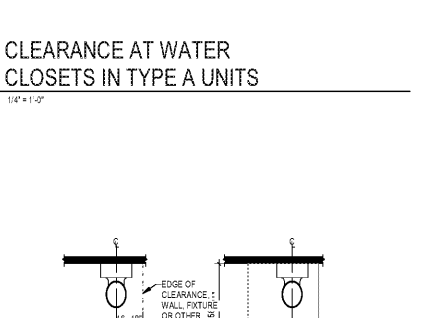
CLEARANCE AT WATER CLOSETS IN TYPE A UNITS
1/4" = 1'-0"



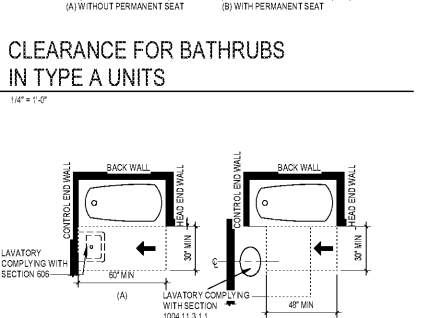
CLEARANCE FOR BATHRUBS IN TYPE A UNITS
1/4" = 1'-0"



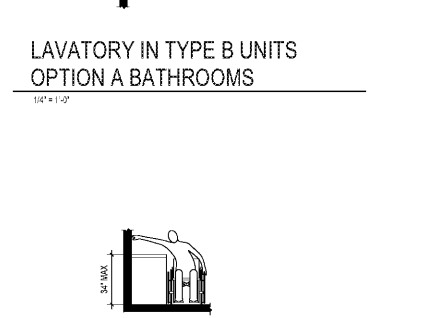
LAVATORY IN TYPE B UNITS OPTION A BATHROOMS
1/4" = 1'-0"



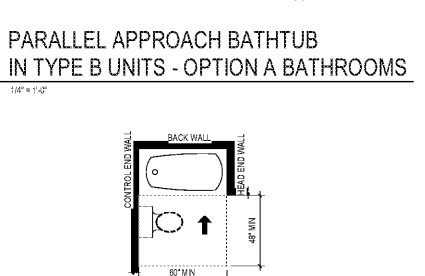
CLEARANCE AT WATER CLOSETS IN TYPE B UNITS
1/4" = 1'-0"



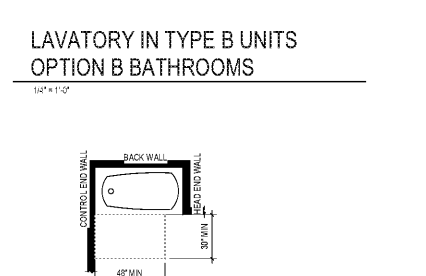
PARALLEL APPROACH BATHTUB IN TYPE B UNITS - OPTION A BATHROOMS
1/4" = 1'-0"



LAVATORY IN TYPE B UNITS OPTION B BATHROOMS
1/4" = 1'-0"

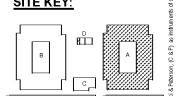
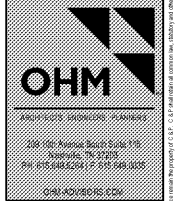


FORWARD APPROACH BATHTUB IN TYPE B UNITS - OPTION A BATHROOMS
1/4" = 1'-0"



BATHROOM CLEARANCE IN TYPE B UNITS OPTION B BATHROOMS
1/4" = 1'-0"

1925 Prospect Ave.
Orlando, FL 32814
P (407) 661-9100
F (407) 661-9101
www.r.p.com



CLIENT NAME
HUTTON DEVELOPMENT
756 Cherry Street
Chattanooga, TN 37402

PROJECT NAME
ROCKLEDGE FLATS - BUILDING A
220 Barton Boulevard
Rockledge, FL 32955

REVISION SCHEDULE

No.	Description	Date

PROJECT INFO

PROJECT NO.	210002
DATE	11/15/2019
DESIGNER	
CHECKER	