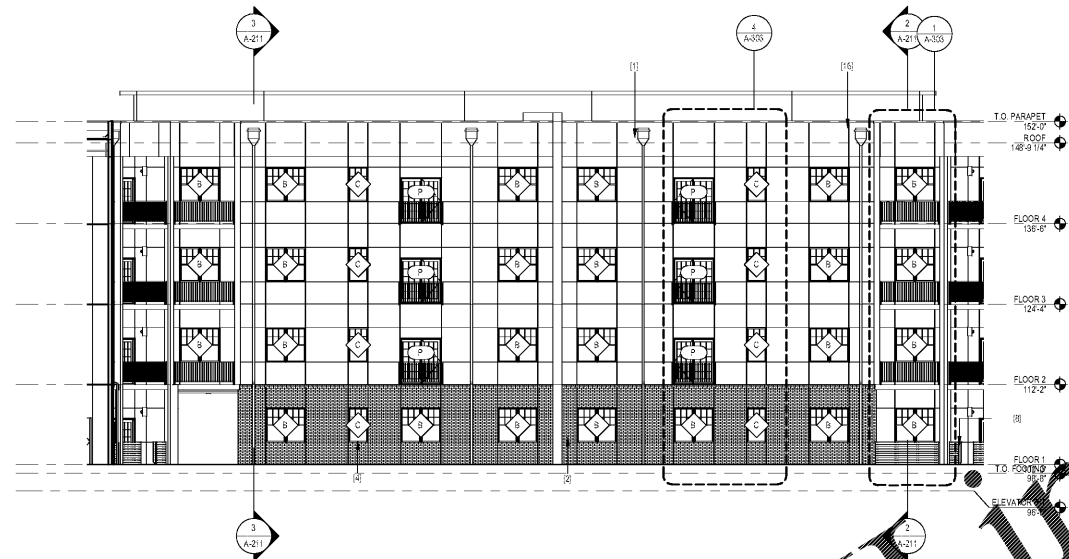
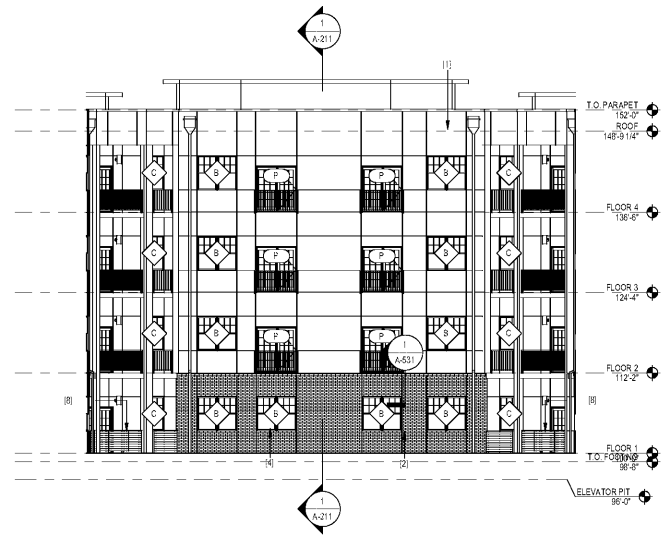


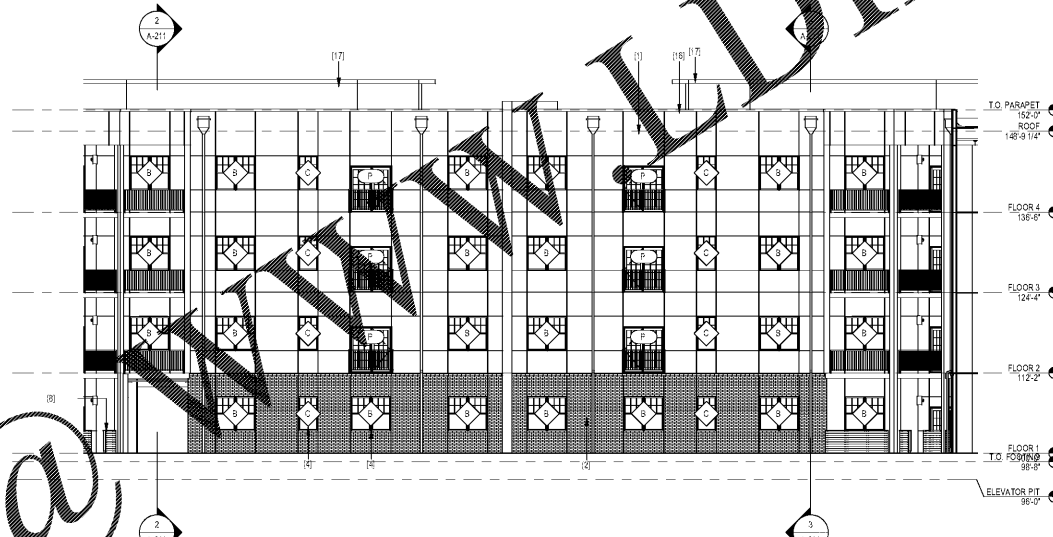
5 Elevation - COURTYARD SOUTH  
3/32" = 1'-0"



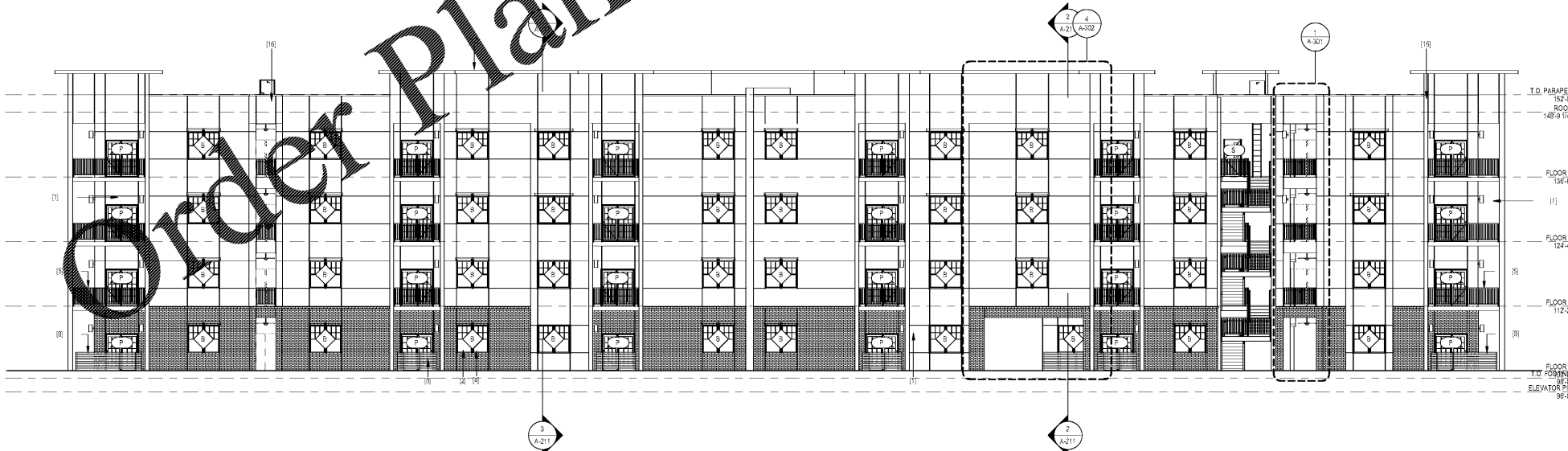
4 Elevation - COURTYARD WEST  
3/32" = 1'-0"



3 Elevation - COURTYARD NORTH  
3/32" = 1'-0"



2 Elevation - COURTYARD EAST  
3/32" = 1'-0"



1 WEST ELEVATION  
3/32" = 1'-0"

**GENERAL ELEVATION NOTES**

- 1 ALL PENETRATIONS SHALL BE SEALED WITH APPROPRIATE MATERIAL.
- 2 ALL EXPOSED METAL ELEMENTS TO BE PRE-FINISHED, COLOR AS SELECTED BY ARCHITECT
- 3 REFER TO SPECIFICATIONS FOR ADDITIONAL INFORMATION ON FINISHES & INSTALLATION REQUIREMENTS

**KEYNOTE LEGEND**

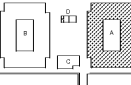
- |      |                                      |
|------|--------------------------------------|
| (1)  | STUCCO                               |
| (2)  | DRYVIT NEWBRICK                      |
| (3)  | PRE-FABRICATED METAL CANOPY          |
| (4)  | ALUMINUM WINDOWS - SEE SCHEDULE      |
| (5)  | ALUMINUM RAILING                     |
| (6)  | ALUMINUM SLIDING DOOR - SEE SCHEDULE |
| (7)  | WOOD FENCE                           |
| (8)  | METAL COPING                         |
| (9)  | METAL CAP AND CORNICE, DTL. TBD      |
| (10) | PERFORATED OR SOLID UP/LIT METAL     |

1925 Prospect Ave.  
Orlando, FL 32814  
P (407) 661-9100  
F (407) 661-9101  
www.r.p.com

**Calacaci & Peterson**  
Architects Engineers Planners



**SITE KEY:**



CLIENT NAME  
**HUTTON DEVELOPMENT**  
756 Cherry Street  
Chattanooga, TN 37402

PROJECT NAME  
**ROCKLEDGE FLATS - BUILDING A**  
220 Barton Boulevard  
Rockledge, FL 32955

FREETITLE  
**EXTERIOR ELEVATION**

Revision Schedule	
No.	Description

PROJECT NO. 21002	DATE 11/15/2019	DRAWN [Signature]	CHECKED [Signature]
----------------------	--------------------	----------------------	------------------------