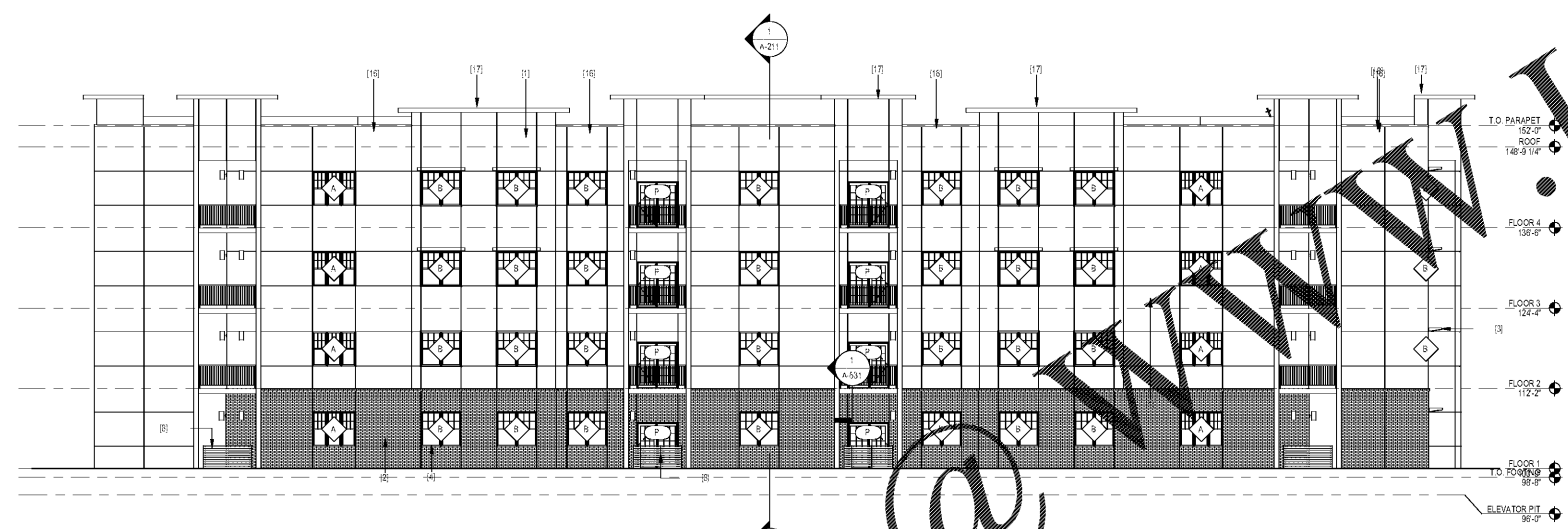
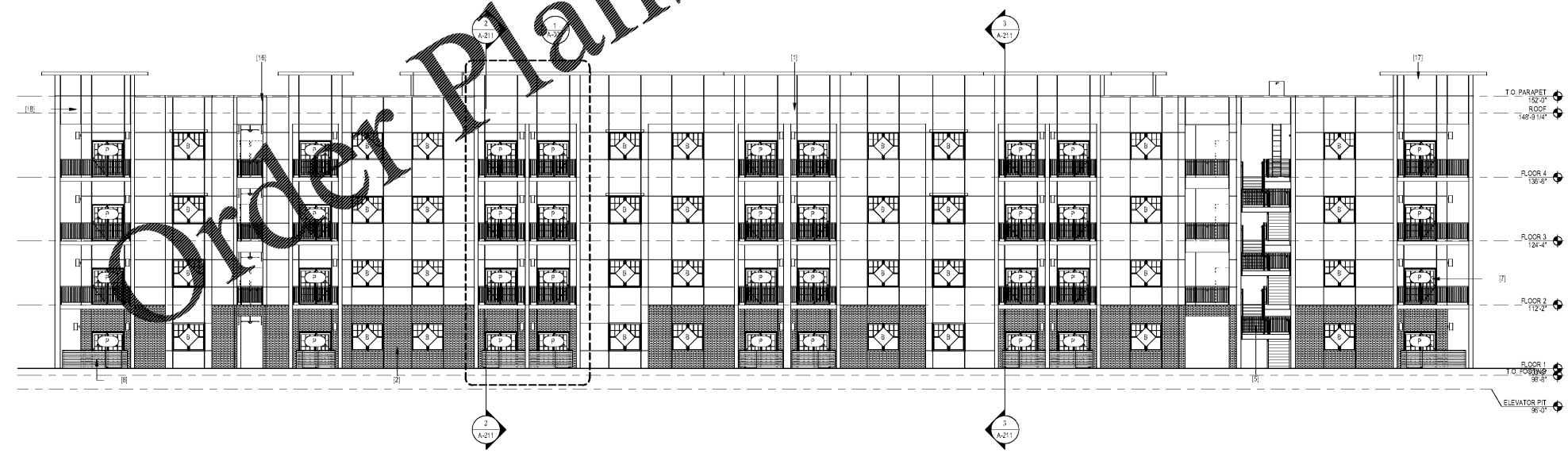


3 SOUTH ELEVATION
3/32" = 1'-0"



2 NORTH ELEVATION
3/32" = 1'-0"



1 EAST ELEVATION
3/32" = 1'-0"

GENERAL ELEVATION NOTES

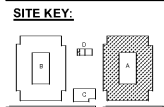
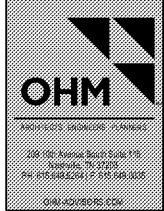
- 1 ALL PENETRATIONS SHALL BE SEALED WITH APPROPRIATE MATERIAL.
- 2 ALL EXPOSED METAL ELEMENTS TO BE PRE-FINISHED, COLOR AS SELECTED BY ARCHITECT
- 3 REFER TO SPECIFICATIONS FOR ADDITIONAL INFORMATION ON FINISHES & INSTALLATION REQUIREMENTS

KEYNOTE LEGEND

- | | |
|------|--------------------------------------|
| (1) | STUCCO |
| (2) | DRYVIT NEWBRICK |
| (3) | PRE-FABRICATED METAL CANOPY |
| (4) | ALUMINUM WINDOWS - SEE SCHEDULE |
| (5) | ALUMINUM RAILING |
| (6) | ALUMINUM SLIDING DOOR - SEE SCHEDULE |
| (7) | WOOD FENCE |
| (8) | METAL COPING |
| (9) | METAL CAP AND CORNICE, DTL. TBD |
| (10) | PERFORATED OR SOLID UP/LP METAL |

1925 Prospect Ave.
Orlando, FL 32814
P (407) 661-9100
F (407) 661-9101
www.r.p.a.com

Culacci & Peterson
Architects Engineers Planners



CLIENT NAME
HUTTON DEVELOPMENT
756 Cherry Street
Chattanooga, TN 37402

PROJECT NAME
ROCKLEDGE FLATS - BUILDING A
220 Barton Boulevard
Rockledge, FL 32955

FREETITLE
EXTERIOR ELEVATION

Revision Schedule	
No.	Description

PROJECT NO. 21002	DATE 11/15/2019	DRAWN [Signature]	CHECKED [Signature]
----------------------	--------------------	----------------------	------------------------

A-201

GMP PRICING SET 15 NOVEMBER 2019

WWW.LDILine.com

Order Plans @