

IRRIGATION NOTES

- SOME PIPE LINES ARE DRAWN OFF SET FOR CLARITY. INSTALL ALL IRRIGATION LINES IN LANDSCAPED AREAS.
- REFER TO THE LANDSCAPE PLANS WHEN TRENCHING TO AVOID TREE ROOT BALLS AND TO INSTALL HEADS AT APPROPRIATE LOCATIONS.
- ADJUST ALL NOZZLES TO REDUCE OVERTHROW ON PAVING & WALLS. THROTTLE ALL IRRIGATION CONTROL VALVES AS REQUIRED TO PREVENT FOGGING. SET CONTROLLER RUN TIMES TO MATCH PLANT WATER NEEDS AND SOIL CONDITIONS.
- INSTALL RISERS 18" FROM WALLS OR BUILDINGS, AND 24" FROM PAVED SURFACES. PAINT ALL RISERS AND SUPPORTS FLAT BLACK.
- INSTALL POP-UP HEADS 18" FROM WALLS, 6" FROM WALKS, DECKS AND CURBS, 6 FEET FROM CURBLESS ROADS, AND 30" FROM THE END OF PARKING SPACES. PROVIDE LAVENDER CAPS AS REQUIRED.
- SET TOP OF POP-UP HEAD CAPS 1" ABOVE FINISHED GRADE PRIOR TO SOO OR MULCH INSTALLATION.
- REFER TO UTILITY PLANS PRIOR TO TRENCHING. THE IRRIGATION INSTALLER SHALL BE RESPONSIBLE FOR THE REPAIR OF ANY DAMAGE TO UTILITIES CAUSED BY THEIR WORK DURING THE PROJECT.
- ALL WORK SHALL BE GUARANTEED FOR ONE YEAR FROM THE DATE OF FINAL ACCEPTANCE AGAINST ALL DEFECTS IN EQUIPMENT AND WORKMANSHIP.
- ELECTRIC POWER SUPPLY FOR THE IRRIGATION CONTROLLER SHALL BE BROUGHT TO A JUNCTION BOX AT THE CONTROLLER LOCATION BY THE BUILDING ELECTRICAL CONTRACTOR. IRRIGATION INSTALLER TO PROVIDE ELECTRICAL PERMITS AND LICENSED ELECTRICIAN TO CONNECT THE IRRIGATION CONTROLLER EQUIPMENT TO THE POWER SUPPLY.
- IRRIGATION WATER CONNECTIONS AND SYSTEM CONSTRUCTION SHALL COMPLY WITH THE REQUIREMENTS OF LOCAL CODES FOR IRRIGATION INSTALLATION, SIGNAGE, PLACARDS AND CONNECTIONS TO THE RECLAIMED WATER SUPPLY. THE TERM LAVENDER COLOR ON THESE PLANS REFERS TO PANTONE COLOR #512, PER PLUMBING CODES AND THE USE OF RECLAIMED WATER FOR LANDSCAPE IRRIGATION.
- IRRIGATION INSTALLER TO ACQUIRE ALL PERMITS AND UTILIZE ALL SAFETY PRECAUTIONS REQUIRED TO WORK IN ROW OF ROADWAY.
- SIXTY (60) PSI MINIMUM STATIC WATER PRESSURE IS REQUIRED FOR THE EFFICIENT OPERATION OF THE IRRIGATION SYSTEM AS DESIGNED. VERIFY THE MINIMUM STATIC WATER PRESSURE AND VOLUME IS AVAILABLE AT THE PROJECT SITE PRIOR TO BEGINNING THE IRRIGATION INSTALLATION. NOTIFY THE LANDSCAPE ARCHITECT IN WRITING IF THE MINIMUM STATIC WATER PRESSURE OR WATER VOLUME IS NOT AVAILABLE.
- AT THE END OF PARKING SPACES PLACE HEADS IN LINE WITH PARKING STRIPES OR 2.5 FEET FROM BACK OF CURB. (TYPICAL)
- PRIOR TO STARTING THE WORKS INSPECT THE SITE AND LOCATE ALL EXISTING IRRIGATION PIPES, WIRES AND EQUIPMENT. PROVIDE LABOR AND MATERIALS TO REPAIR ANY DAMAGED EXISTING IRRIGATION. PROVIDE "LIFELINE" PIPES AND WIRES TO KEEP ADJACENT IRRIGATION ZONES OPERATIONAL THROUGHOUT THE WORKS.
- THE IRRIGATION MAINLINE IS DRAWN OFFSET FOR GRAPHIC CLARITY. DO NOT SCALE THE MAINLINE FROM THE DRAWING FOR INSTALLATION. LAYOUT THE IRRIGATION MAINLINE ROUTE IN THE FIELD TO AVOID PROPOSED AND EXISTING TREE ROOT ZONES AND UTILITIES.

IRRIGATION LEGEND

- REUSE WATER TAP AND REUSE WATER METER, PER LOCAL AND STATE CODES. SIZE INDICATED ON PLAN.
- IRRIGATION CONTROLLER WITH RAIN SWITCH. NUMBER OF STATIONS INDICATED ON PLAN. 120 VOLT, 1.0 AMP. ELECTRIC CIRCUIT FROM NEAREST ELECTRICAL PANEL, BY THE BUILDING CONTRACTOR. PROVIDE CONTROLLER GROUNDING WITH 1/2" BARE COPPER WIRE. 5/8" X 6" COPPER CLAD GROUND ROD AND CADWELD GT1161G WELD KIT. RAINBIRD FSP-LX MODULAR SERIES WITH WIRELESS RAIN SWITCH. HUNTER ICC2 SERIES WITH WIRELESS RAIN CLICK.
- IRRIGATION CONTROL VALVE. PLASTIC BODY WITH VALVE ID TAG. MOUNT IN 18" RECTANGULAR VALVE BOX WITH LAVENDER LID. SIZE INDICATED ON PLAN. PROVIDE UF 14AWG COPPER CONTROL WIRE TO ALL VALVES. RAINBIRD PPSB PHS VALVE SERIES, OR EQUAL. HUNTER ICV WITH FILTER SENTRY VALVE SERIES, OR EQUAL.
- IRRIGATION CONTROL VALVE TAG. INDICATES VALVE LOCATION, STATION NUMBER, SIZE AND ZONE FLOW RATE.
- IRRIGATION ISOLATION VALVE. SIZE SAME SIZE AS PIPE. MOUNT IN 18" RECTANGULAR VALVE BOX WITH 8" NDS DRAIN PIPE EXTENSION AS NEEDED. 2.5" AND SMALLER - BRONZE THREADED ON TYPE WITH WHEEL HANDLE. 3" AND LARGER - CAST IRON GASKET JOINT TYPE WITH 2" OPERATING NUT HANDLE, AND VALVE TO PIPE RESTRAINING FITTINGS. PROVIDE ONE VALVE KEY FOR EACH TYPE VALVE INSTALLED.
- PVC MAIN LINE PIPE WITH METALLIC MARKING TAPE. CLASS 200, PURPLE PVC. INSTALL 18" DEEP. 2.5" AND SMALLER, SOLVENT WELD PVC PIPE AND FITTINGS. 3" AND LARGER, GASKET JOINT PIPE AND HARCO DUCTILE IRON GASKET JOINT FITTINGS AND CONCRETE THRUST BLOCKS.
- PVC LATERAL LINE PIPE. PURPLE PVC. INSTALL 12" DEEP. 3/4" AND LARGER, CLASS 200, PVC. 1/2" PIPE SIZE, CLASS 315, PVC. 2.5" AND SMALLER, SOLVENT WELD PVC PIPE AND FITTINGS.
- PVC SLEEVE PIPE. CLASS 200, PVC. SOLVENT WELD PVC PIPE AND FITTINGS.

SPRAY BODIES

RAINBIRD 1800 SERIES SPRAY BODIES & ADAPTERS
 PROVIDE PURPLE CAP FOR RECLAIMED WATER
 POLY PIPE AND INSERT FITTING SWING JOINTS
 PROVIDE MPR SPRAY NOZZLES PER PLAN
 USE U-SERIES NOZZLES FOR "S", "D", "T", "H", "L" & "P" NOZZLE DESIGNATION
 USE VAN SERIES NOZZLES FOR "Z", "Z2" & "Z1" NOZZLE DESIGNATION

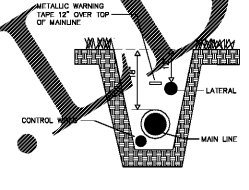
- 6" POP-UP IURF SPRAY BODY
- 12" POP-UP SHRUB SPRAY BODY
- X" SHRUB NOZZLE ON PVC RISER
- TREE BUBBLER ON FLEX PE PIPE

LETTER	GPM AT 30 PSI	RADIUS	PATTERN
A	0.92	15'	QUARTER
B	1.30	15'	ONE THIRD
C	1.85	15'	HALF
D	2.48	15'	TWO THIRD
E	2.92	15'	THREE QTR.
F	3.70	15'	FULL
G	0.65	12'	QUARTER
H	0.90	12'	ONE THIRD
J	1.30	12'	HALF
K	1.75	12'	TWO THIRD
L	2.00	12'	THREE QTR.
M	2.60	12'	FULL
N	0.39	10'	QUARTER
P	0.57	10'	ONE THIRD
R	0.79	10'	HALF
Q	1.58	10'	FULL
U	0.61	4' X 15'	END STRIP
UI	0.5	4' X 15'	LEFT CORNER STRIP
Ur	0.5	4' X 15'	RIGHT CORNER STRIP
Uj	1.21	4' X 30'	SIDE STRIP
W	1.2	4' X 30'	CENTER STRIP
X	1.7	9' X 18'	SIDE STRIP
Z1	VARIES	10'	10' ADJUSTABLE ARC
Z2	VARIES	12'	12' ADJUSTABLE ARC
Z	VARIES	15'	15' ADJUSTABLE ARC
Y	0.5	1'	FLOOD BUBBLER
O	1.0	5'	STREAM BUBBLER
1	0.26	8"	QUARTER
2	0.32	8"	ONE THIRD
3	0.52	8"	HALF
4	1.05	8"	FULL
5	1	5"	QUARTER
6	2	5"	ONE THIRD
7	2	5"	HALF
8	.38	5"	FULL

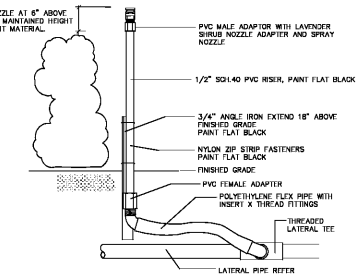
ROTOR HEADS

RAINBIRD 5000 SERIES
 PROVIDE PURPLE CAP FOR RECLAIMED WATER
 POLY PIPE AND INSERT FITTING SWING JOINTS
 6" POP-UP BODY IN TURF

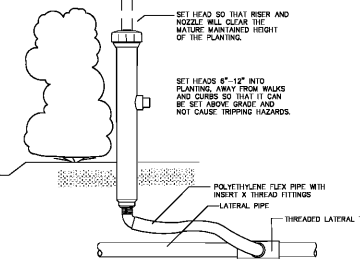
- 5000-MPR-25 (RED) NOZZLE AT 45 PSI
 - 25' 90 DEGREE HEAD (1 GPM)
 - 25' 180 DEGREE HEAD (2 GPM)
 - 25' 360 DEGREE HEAD (4 GPM)
- 5000-MPR-35 (GREEN) NOZZLE AT 45 PSI
 - 30' 90 DEGREE HEAD (1.4 GPM)
 - 30' 180 DEGREE HEAD (3 GPM)
 - 30' 360 DEGREE HEAD (6 GPM)
- 5000-MPR-35 (BRIG) NOZZLE AT 45 PSI
 - 35' 90 DEGREE HEAD (2 GPM)
 - 35' 180 DEGREE HEAD (4 GPM)
 - 35' 360 DEGREE HEAD (7.5 GPM)



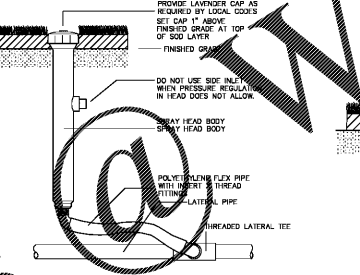
TYPICAL TRENCHING
 NOT TO SCALE



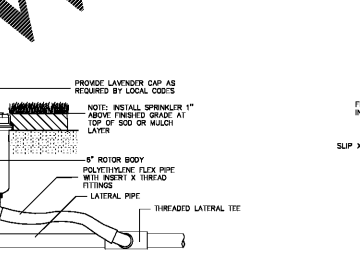
SHRUB RISER
 NOT TO SCALE



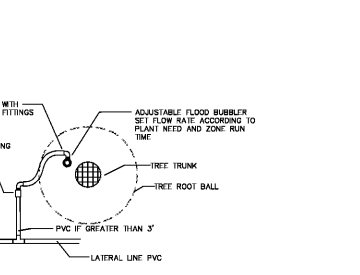
SPRAY HEAD IN SHRUB BED
 NOT TO SCALE



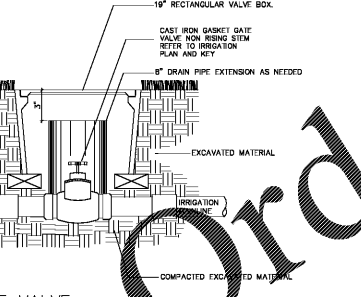
POP UP SPRAY
 NOT TO SCALE



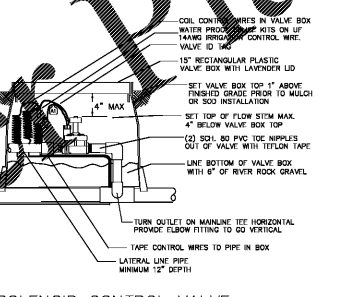
TURF ROTOR
 NOT TO SCALE



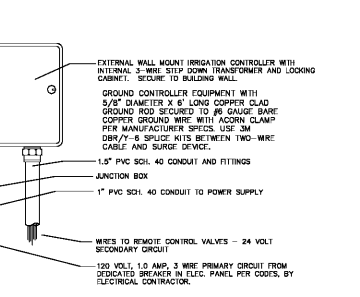
TREE BUBBLER - 0.5 GPM ADJUSTABLE
 NOT TO SCALE



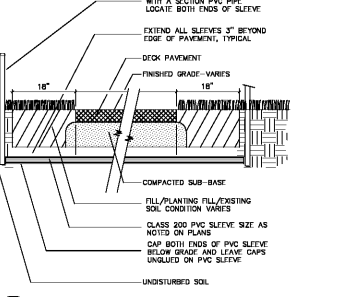
GATE VALVE
 NOT TO SCALE



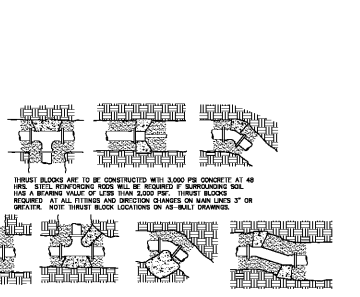
SOLENOID CONTROL VALVE
 NOT TO SCALE



WALL MOUNTED CONTROLLER
 NOT TO SCALE



SLEEVE UNDER PAVING
 NOT TO SCALE



THRUST BLOCK DETAILS
 NOT TO SCALE



Project Name
ROCKLEDGE FLATS

Client
OHM ADVISORS

Consultants
edsa
 800 N. ORANGE AVENUE, SUITE 300
 ORLANDO, FLORIDA 32801 USA
 TEL: 407 426 3330

OHM ADVISORS
 DESIGN ARCHITECT
 208 10TH AVENUE SOUTH, SUITE 116
 NASHVILLE, TN 37203

CUHACI & PETERSON
 ARCHITECT IN RECORD
 1925 PROSPECT AVENUE
 ORLANDO, FL 32814

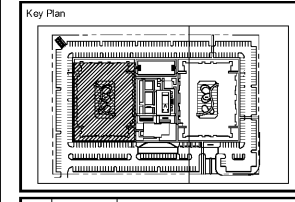
BRAND INTERIOR DESIGN
 INTERIOR DESIGNER
 NASHVILLE, TN 34747

BERRY ENGINEERS LLC
 CIVIL ENGINEER
 3555 KEITH STREET NW, SUITE 109
 CLEVELAND, TN 37312

EMC STRUCTURAL ENGINEERS
 STRUCTURAL ENGINEER
 4525 TROUSDALE DRIVE
 NASHVILLE, TN 37204-4513

QDG ENGINEERING
 MEP AND FIRE PROTECTION
 6901 LENOX VILLAGE DRIVE, SUITE 108
 NASHVILLE, TN 37211

PREVOST STAMMER IRRIGATION
 IRRIGATION CONSULTANT
 414 ARBOR CIRCLE
 CELEBRATION, FL 34747



Rev	Date	Issued for

Date: NOVEMBER 15, 2019
 Designed By: PSI
 Drawn By: PSI
 Approved / Checked By: MLP
 Project Number: 219086

Project Phase
GMP PRICING SET

Sheet Title
RECLAIMED IRRIGATION LEGEND, NOTES & DETAILS

Sheet Number
L7-3-01