

PLUMBING LEGEND	
---	SANITARY
---	VENT
---	COLD WATER
---	HOT WATER
---	GAS
---	HOT WATER RETURN
---	CONDENSATE
---	GREASE WASTE
---	P-TRAP
---	DRAIN W/O TRAP
---	INDIRECT WASTE
---	PIPE DOWN
---	PIPE UP
---	TEE DOWN
---	TEE UP
---	TEE TO THE SIDE
GW	
V	VENT UP
VTR	VENT THRU ROOF
FU	FIXTURE UNIT
WFU	WATER SUPPLY FIXTURE UNITS
CO	CLEAN OUT
FCO	FLOOR CLEAN OUT

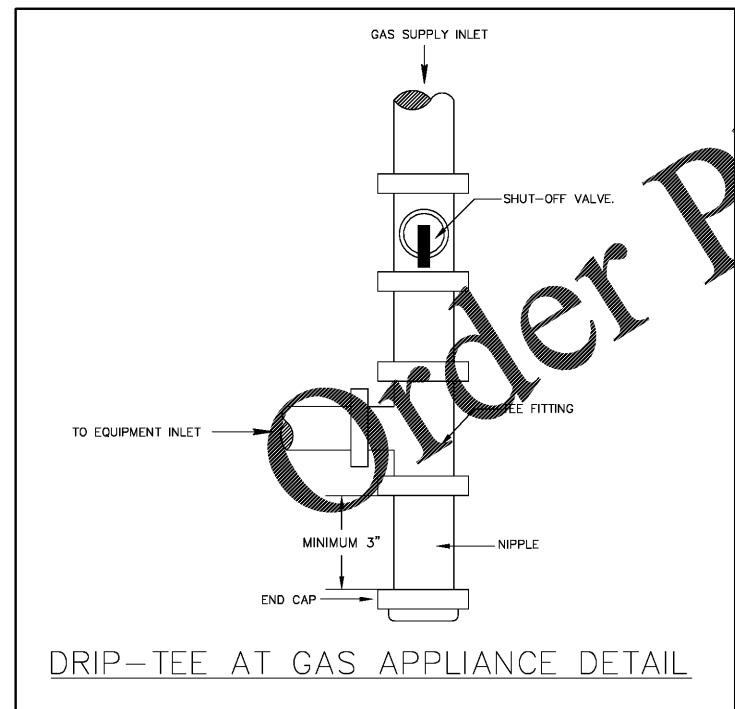
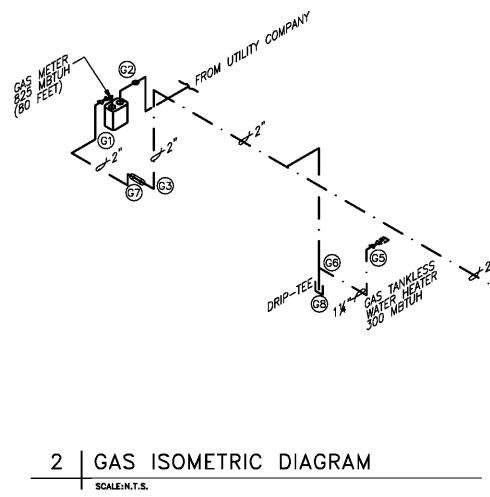
GAS PIPING MATERIAL AND CODE TABLES

11" W.C. NATURAL GAS PIPING:
 • LONGEST RUN: 90 FEET.
 TOTAL LOAD: 825 MBTUH.

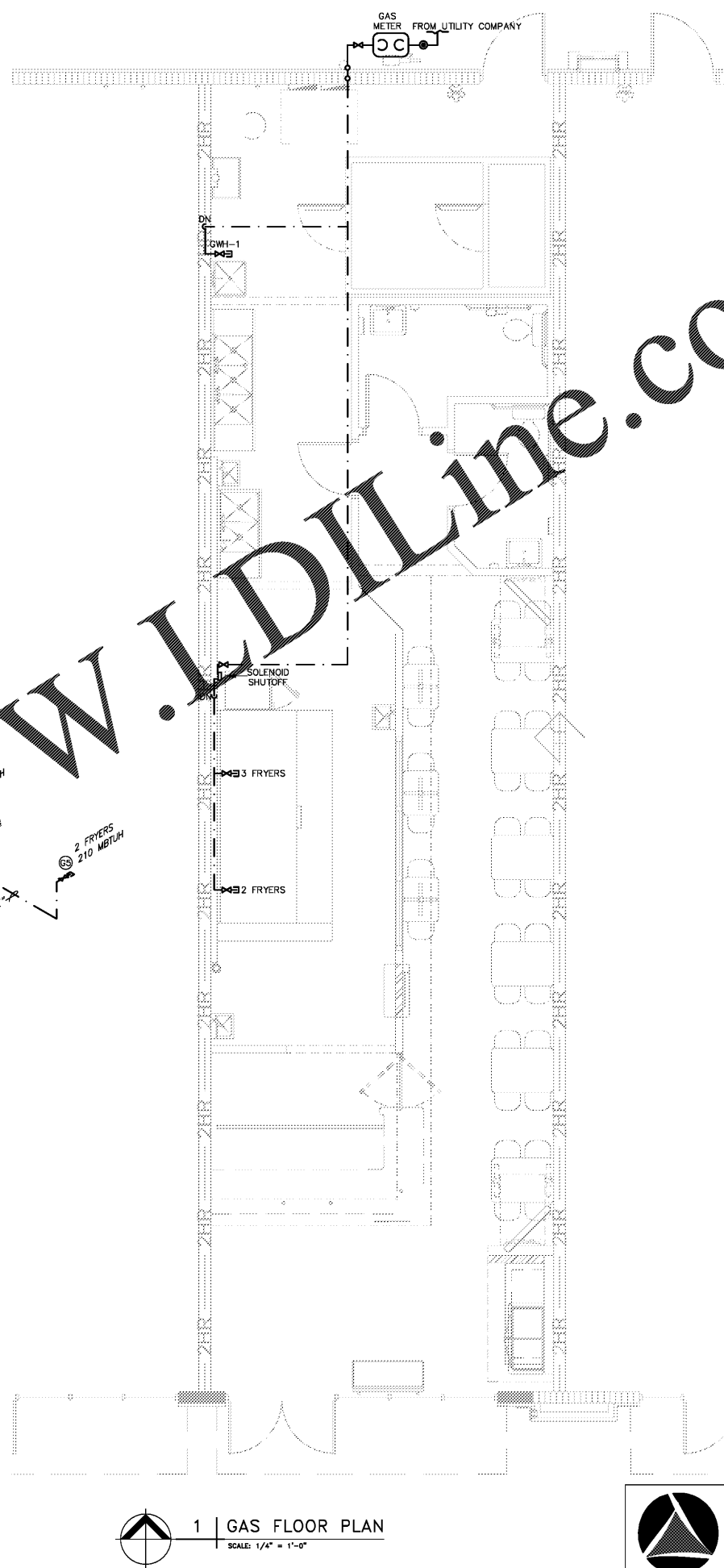
• ABOVEGROUND PIPING FROM UTILITY METER/REGULATOR UP TO EACH INDIVIDUAL GAS APPLIANCE TO BE SCH 40 METALLIC PIPE 1/2" W.C. SIZED AS PER 2017 FLORIDA FUEL GAS CODE TABLE 402.4(2).

GAS LOAD SUMMARY			
SYSTEM	DESIGNATION	EQUIPMENT	MBH
DOMESTIC WATER HEATING	GWH	TANKLESS WATER HEATER	300
	SUB-TOTAL		300
KITCHEN EQUIPMENT	FRYER (18)	SOLSTICE SUPREME GAS FRYER	105
	FRYER (18)	SOLSTICE SUPREME GAS FRYER	105
	FRYER (18)	SOLSTICE SUPREME GAS FRYER	105
	FRYER (18)	SOLSTICE SUPREME GAS FRYER	105
	FRYER (18)	SOLSTICE SUPREME GAS FRYER	105
SUB-TOTAL			525
TOTAL NATURAL GAS CONNECTED LOAD			825
GAS METER REQUIREMENTS	MBH CAPACITY		825
	LONGEST TOTAL DEVELOPED LENGTH INCLUDING EQUIPMENT PIPE LENGTH FOR FITTING & VALVING FRICTION LOSS TO FURTHEST FIXTURE FROM GAS METER		~66 FT x 1.2 = 79.2 FT
	CONSULT TECO (GAS UTILITY COMPANY) FOR REGULATOR RATING		

- NATURAL GAS KEY NOTES**
- EXISTING NATURAL GAS UTILITY METER WITH 2" GAS PIPE OUTLET. CONTRACTOR TO COORDINATE EXACT LOCATION.
 - PROVIDE REGULATOR AT UTILITY METER TO DROP TO 11" WC. PROVIDE VENTING WITH INSECT SCREEN EXTENDED AT LEAST 10' FROM BUILDING OPENINGS AND SOURCES OF IGNITION (I.E., CONDENSING UNITS), IF NECESSARY. COORDINATE REGULATOR SELECTION WITH TOTAL CAPACITY REQUIREMENTS OF ALL APPLIANCES AND PROVISIONS FOR FUTURE LOADS PRIOR TO PURCHASE. PROVIDE UNION AS REQUIRED TO CONNECT TANK OUTLET TO REGULATOR INLET.
 - ABOVEGROUND PIPING. SIZING IS BASED ON THE EQUIVALENT PIPING LENGTHS, EQUIPMENT CAPACITIES AND PRESSURE LISTED ON THE RISER. NOTIFY ENGINEER PRIOR TO INSTALLING ANY PIPING IF THESE VALUES ARE TO BE EXCEEDED.
 - UNDERGROUND PIPING. SIZING IS BASED ON THE EQUIVALENT PIPING LENGTHS, EQUIPMENT CAPACITIES AND PRESSURE LISTED ON THE RISER. NOTIFY ENGINEER PRIOR TO INSTALLING ANY PIPING IF THESE VALUES ARE TO BE EXCEEDED. CONTRACTOR TO COORDINATE EXACT ROUTING WITH OWNER AND FIELD CONDITIONS. CALL 811 OR 800-432-4770 PRIOR TO DIGGING OR TRENCHING. A PROFESSIONAL UNDERGROUND LOCATOR SERVICE IS RECOMMENDED IN ADDITION.
 - PROVIDE UNION WITH SHUTOFF VALVE AS REQUIRED TO CONNECT PIPING TO APPLIANCE INLET. COORDINATE EXACT LOCATION OF STUB-UPS WITH OWNER. FUEL CONSUMPTION RATES SHOWN ARE ESTIMATES. VERIFY ALL VALUES WITH EQUIPMENT NAMEPLATE DATA AND NOTIFY ENGINEER OF ANY CHANGES PRIOR TO INSTALLATION. PIPING FROM SHUTOFF VALVE TO APPLIANCE SHALL BE FLEXIBLE AND LISTED IN ACCORDANCE WITH FBC. PROVIDE RESTRAINING CABLE PERMANENTLY FASTENED FROM APPLIANCE TO SLAB TO MAINTAIN 12" OF SLACK IN FLEXIBLE PIPING WHEN RESTRAINING CABLE IS FULLY EXTENDED IN ANY DIRECTION. IMMEDIATELY NOTIFY ENGINEER IF PROPOSED APPLIANCE IS NOT LISTED FOR 11" WC NATURAL GAS.
 - ABOVEGROUND CONCEALED PIPING IN CRAWL SPACE TO BE CORRUGATED STAINLESS STEEL TUBING (CSST). SIZING IS BASED ON THE EQUIVALENT PIPING LENGTHS, EQUIPMENT CAPACITIES AND PRESSURE LISTED ON THE RISER. NOTIFY ENGINEER PRIOR TO INSTALLING ANY PIPING IF THESE VALUES ARE TO BE EXCEEDED.
 - PIPING PENETRATION THROUGH EXTERIOR WALL SHALL BE MINIMUM 12" AFF, SLEEVED IN SCHEDULE 40 PVC AND ANNUAL SPACE SHALL BE SEALED.
 - PROVIDE SEDIMENT TRAP WITH 90-DEGREE CHANGE OF DIRECTION OF GAS FLOW, TO HELP PREVENT SEDIMENT FROM FLOWING OVER THE TRAP. INSTALL AS CLOSE TO THE INLET OF THE EQUIPMENT AS PRACTICAL.



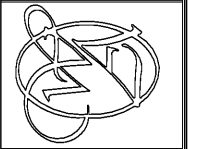
- GAS PIPING DETAIL KEY NOTES**
- UPSTREAM NATURAL GAS PIPING FROM UTILITY.
 - SHUT-OFF VALVE.
 - THREADED AND PLUGGED TEE INSTALLED TO ALLOW CONNECTION TO A PRESSURE MEASURING INSTRUMENT, AND SHALL SERVE AS A SEDIMENT TRAP.
 - UTILITY METER AND PRESSURE REGULATOR LISTED FOR OUTDOOR INSTALLATION. MAINTAIN MINIMUM 10" CLEARANCE FROM SOURCES OF IGNITION, OR EXTEND VENT.
 - MAXIMUM 6" BETWEEN REGULATOR AND DOWNSTREAM PLUG.
 - THREADED AND PLUGGED TEE INSTALLED TO ALLOW CONNECTION TO A PRESSURE MEASURING INSTRUMENT.
 - PROVIDE UNION AS REQUIRED TO CONNECT PIPING TO APPLIANCE INLET. COORDINATE EXACT LOCATION OF STUB-UPS WITH OWNER. FUEL CONSUMPTION RATES SHOWN ARE ESTIMATES. VERIFY ALL VALUES WITH EQUIPMENT NAMEPLATE DATA AND NOTIFY ENGINEER OF ANY CHANGES PRIOR TO INSTALLATION. PIPING FROM UNION TO APPLIANCE SHALL BE FLEXIBLE AND LISTED IN ACCORDANCE WITH FBC. PROVIDE RESTRAINING CABLE PERMANENTLY FASTENED FROM APPLIANCE TO SLAB TO MAINTAIN 12" OF SLACK IN FLEXIBLE PIPING WHEN RESTRAINING CABLE IS FULLY EXTENDED IN ANY DIRECTION.
 - GAS UTILIZATION EQUIPMENT.
 - A YELLOW INSULATED COOPER TRACER WIRE OR OTHER APPROVED CONDUCTOR SHALL BE INSTALLED ADJACENT TO UNDERGROUND NONMETALLIC PIPING. ACCESS SHALL BE PROVIDED TO THE TRACER WIRE OR THE TRACER WIRE SHALL TERMINATED ABOVE GROUND AT EACH END OF THE NONMETALLIC PIPING. THE TRACER WIRE SIZE SHALL NOT BE LESS THAN 18 AWG AND THE INSULATION TYPE SHALL BE SUITABLE FOR DIRECT BURIAL.



DATE: 03/15/19

THIS DOCUMENT, THE IDEAS AND DESIGNS INCORPORATED HEREIN, AS AN INSTRUMENT OF PROFESSIONAL SERVICE, IS THE PROPERTY OF WARNER ARCHITECTURAL ASSOCIATES AND IS NOT TO BE USED, IN WHOLE OR IN PART, FOR ANY OTHER PROJECT WITHOUT THE WRITTEN AUTHORIZATION OF WARNER ARCHITECTURAL ASSOCIATES, INC.

WARNER ARCHITECTURAL ASSOCIATES
 109 ANDERSON STREET SE, SUITE 105
 MARIETTA, GA 30060
 PH: 678.290.9200
 EMAIL: INFO@WARNERARCHASSOC.COM



WINGSPAN
 10125 ULMERTON RD.
 LARGO, FL 33771 (SUITE C)
 STORE # V050

DRAWN BY: RCI
 CHECKED BY: RCI
 DATE: 03/15/2019
 PROJECT: V050
 REVISION:

GAS FLOOR PLAN
 DRAWING NUMBER
P3

PROJECT #: 19022

RCI Engineering, Inc.
 C.A.#: 27662
 BRIAN D. COLDWELL, PE - LIC #67527
 OSCAR E. SEBLEN, PE - LIC #66481
 5230 S UNIVERSITY DR, SUITE 106, DAWIE, FL 33328
 P: 954.680.2690 F: 954.414.9393 www.rcieng.com

THESE PLANS ARE FOR BUILDING DEPARTMENT REVIEW ONLY. THEY ARE NOT TO BE CONSTRUED AS CONSTRUCTION DOCUMENTS UNTIL ALL BUILDING DEPARTMENT APPROVALS ARE OBTAINED.